

[Manuals.plus](#) /

> [Zhenx](#) /

> Zhenx EAU63923603 Refrigerator Evaporator Fan Motor Assembly Instruction Manual

Zhenx EAU63923603

Zhenx EAU63923603 Refrigerator Evaporator Fan Motor Assembly

Model: EAU63923603 | Brand: Zhenx

1. PRODUCT OVERVIEW

The Zhenx EAU63923603 Refrigerator Evaporator Fan Motor Assembly is a replacement component designed to circulate air within the refrigerator's freshness chamber, ensuring efficient cooling. This motor is an upgraded replacement part, compatible with various LG and Kenmore refrigerator models. It addresses common issues such as insufficient cooling, noisy operation, or a non-functional fan due to wear or damage.



▶ Efficient Refrigeration

- ✔ It allows air to circulate through the freshness chamber for efficient refrigeration

◀ Quality materials

- ✔ The motor housing is made of high quality ABS plastic for durability.
- ✔ The inside of the motor circuit is made of high quality metal for long life

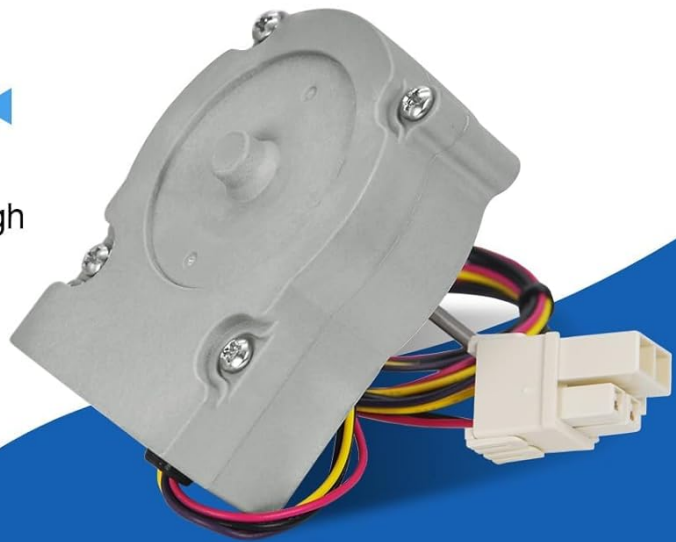


Image 1.1: The EAU63923603 Refrigerator Evaporator Fan Motor Assembly.

Key Features:

- **Efficient Cooling:** Allows air to circulate in the freshness chamber for optimal refrigeration.
- **Quality Material:** Motor housing made of high-quality ABS plastic for durability; internal circuit made of high-quality metal for long life and reliability.
- **Direct Replacement:** Designed as an upgraded replacement for EAU65058305, AP6317197, PS12383671, EAP12383671, and PD00045140.
- **Identical Fit:** While potentially slightly larger than original parts, mounting holes and connector locations are identical, ensuring compatibility.

2. SPECIFICATIONS

Specification	Value
Brand	Zhenx

Specification	Value
Model	EAU63923603
Speed	3500 RPM
Voltage	12 Volts (DC)
Horsepower	2.3 Watts
Product Dimensions	3.46"W x 2.6"H
Material Type	Metal
Item Weight	0.15 Kilograms
Included Components	Motor

3. COMPATIBILITY

This evaporator fan motor assembly is compatible with a wide range of LG and Kenmore refrigerator models. Please verify your refrigerator's model number against the lists below to ensure proper fit.

Compatible LG Refrigerator Models:

EAU63923603 Refrigerator Evaporator Fan Motor

Product Specification

Voltage: DC 12V

Current: 1.0 A

Shaft length: 46mm, Shaft diameter: 3.0mm

Wire length: 70cm/27.5in (with 4-pin connector)

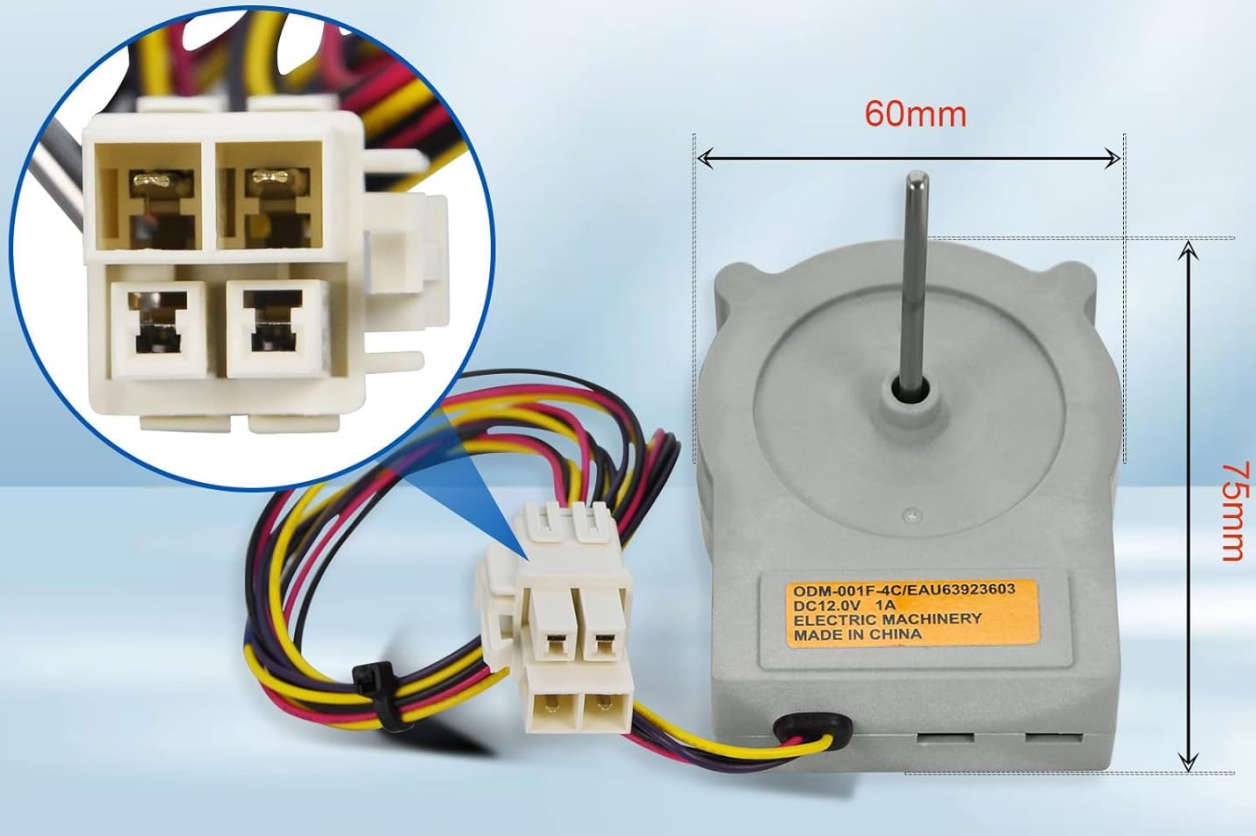


Image 3.1: Partial list of compatible LG refrigerator models.

- LFXS26596M/00
- LFXS26596S/00
- LFXS26596S/01
- LFXS26973D/00
- LFXS26973D/01
- LFXS26973S/00
- LFXS28566D/00
- LFXS28566D/01
- LFXS28566M/00
- LFXS28596M/00
- LFXS28596S/00
- LFXS28596S/01
- LFXS28968D/00
- LFXS28968D/01

- LFXS28968S/00
- LFXS28968S/02
- LFXS26596D/01
- LFXS28596D/01
- LFXS26973S/02
- LFXS28968S/11
- LFXS28566D-ASBCNA0
- LFXS28566D-ASBCNA1
- LFXS28968D-ASBCNA0
- LFXS28968D-ASBCNA1
- LMXS28636S/00
- LFXS28596D/00
- LFXS28596D/01
- LFXS28596M/01
- LFXG22526S/00
- LFXG22526S/01
- LFXG22596S/00
- LFXG22596S/01
- LFXG22526D/00
- LFXG22596D/01
- LFXG22526D/02
- LFXG22526D/04
- LFXG22526D/10
- LFCC22426S/00
- LFCC22426S/01
- LFCC23596S/01
- LFCS27596S/00
- LFCS27596S/01
- LFCS27596S/08
- LFCS28768S/00
- LRDGS2603S/00
- LRFCS2503S/00
- LRFCS25D3S/00
- LRFDS2503S/00
- LRFXS2503D/00
- LRFXS2513S/00
- LMXS28596D/01
- LMXS28596S
- LMXS28596S/01
- LMXS28626D/04
- LMXS28626S/00
- LMXS28626S/02
- LMXS28626S/04
- LMXS28626S/06

Compatible Kenmore Refrigerator Models:

Fits in these refrigerators

Compatible with Lg refrigerators

LFXS26596M/00	LFXS26596S/00	LFXS26596S/01	LFXS26973D/00
LFXS26973D/01	LFXS26973S/00	LFXS28566D/00	LFXS28566D/01
LFXS28566S/00	LFXS28596M/00	LFXS28596S/00	LFXS28596S/01
LFXS28968D/00	LFXS28968D/01	LFXS28968S/00	LFXS28968S/02
LFXS28566D-ASBCNA0	LFXS28566D-ASBCNA1		LFXS28968S/11
LFXS28968D-ASBCNA0	LFXS28968D-ASBCNA1		LMXS28636S/00
LFXS26596D/01	LFXS28596D/01	LFXS26973S/02	LFXS28596D/00
LFXS28596D/00	LFXS28596M/01	LFXC22526S/00	LFXC22526S/01
LFXC22596S/00	LFXC22596S/01	LFXC22526D/00	LFXC22596D/01
LFXC22526D/02	LFXC22526D/04	LFXC22526D/10	LFCC22426S/00
LFCC22426S/01	LFCC23596S/01	LFCS27596S/00	LFCS27596S/01
LFCS27596S/08	LFCS28768S/00	LRDCS2603S/00	LRFCS2503S/00
LRFCS25D3S/00	LRFDS2503S/00	LRFXS2503D/00	LRFXS2513S/00
LMXS28596D/01	LMXS28596S	LMXS28596S/01	LMXS28626D/04
LMXS28626S/00	LMXS28626S/02	LMXS28626S/04	LMXS28626S/06

Image 3.2: Partial list of compatible Kenmore refrigerator models.

- 79570355910
- 79570357910
- 79571355910
- 79572595710
- 79572595711
- 79572595712
- 79572597712
- 79573102710
- 79573102711
- 79574102810
- 79574102811
- 79574102812
- 79574105810

- 79574105811
- 79574105812
- 79574109810
- 79574109811
- 79574109812
- 79574147910
- 79574149910

4. INSTALLATION

Replacing the evaporator fan motor requires careful attention to safety and proper procedure. If you are unsure about any step, it is recommended to consult a qualified technician.

Safety Precautions:

- **Always unplug the refrigerator** from the power source before beginning any repair or maintenance.
- **Wear work gloves** to protect your hands from sharp edges or components.
- **Safely store potentially spoiled food** in advance, as the refrigerator will be off for a period.
- **Confirm the motor model** (EAU63923603) matches your required replacement part.

Fits In These Refrigerators

Compatible with Kenmore refrigerators

79570355910 79570357910
79571355910 79572595710
79572595711 79572595712
79572597712 79573102710
79573102711 79574102810
79574102811 79574102812
79574105810 79574105811
79574105812 79574109810
79574109811 79574109812
79574147910 79574149910

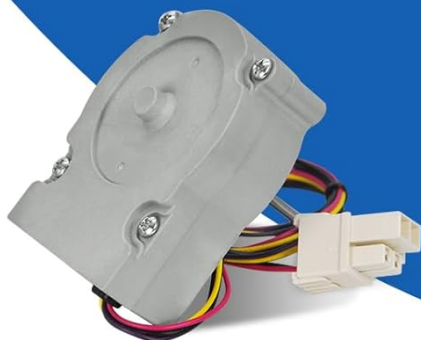


Image 4.1: Key safety tips before starting installation.

General Installation Steps:

1. **Disconnect Power:** Unplug the refrigerator from the wall outlet.
2. **Access Evaporator Cover:** Locate and remove the screws holding the evaporator cover inside the freezer compartment. Carefully detach the cover.
3. **Disconnect Old Motor:** Disconnect the wiring harness from the old evaporator fan motor. Note the orientation of the wires if not color-coded.
4. **Remove Old Motor:** Unscrew or unclip the old motor from its mounting bracket.
5. **Install New Motor:** Secure the new EAU63923603 motor onto the mounting bracket. Ensure it is firmly in place.
6. **Connect Wiring:** Connect the wiring harness to the new motor. The connector is designed to fit only one way.
7. **Reinstall Cover:** Carefully reattach the evaporator cover and secure it with its screws.
8. **Restore Power:** Plug the refrigerator back into the power outlet.
9. **Test Operation:** Listen for the fan motor to operate and confirm the refrigerator is cooling properly.

Installation Video Guide:

Your browser does not support the video tag.

Video 4.2: Official video demonstrating the installation process for the EAU63923603 Refrigerator Evaporator Fan Motor Assembly. This video provides a visual guide to assist with the replacement steps.

5. TROUBLESHOOTING

If your refrigerator is experiencing issues after installation or if you suspect the fan motor is failing, refer to the common problems and solutions below.

Problem	Possible Cause & Solution
Refrigerator not cooling or not cooling enough	<ul style="list-style-type: none">• Fan motor not operating: Check if the fan blades are obstructed or if the motor is receiving power. Ensure the wiring harness is securely connected.• Motor failure: If the motor does not spin freely or makes unusual noises, it may need replacement.
Noisy operation (grinding, squeaking)	<ul style="list-style-type: none">• Worn motor bearings: The motor's internal components may be worn. Replacement is typically required.• Fan blade obstruction: Inspect for ice buildup or foreign objects interfering with the fan blades.
Fan does not operate	<ul style="list-style-type: none">• No power: Verify the refrigerator is plugged in and receiving power. Check circuit breakers.• Wiring issue: Ensure the motor's wiring harness is correctly and securely connected.• Motor failure: The motor itself may have failed due to age or damage.

6. MAINTENANCE

Regular maintenance can extend the life of your refrigerator components and ensure optimal performance.

- **Keep Evaporator Area Clear:** Periodically check the freezer compartment's evaporator area for any obstructions (e.g., food packaging, ice buildup) that might impede the fan blades.
- **Clean Coils:** While not directly related to the evaporator fan motor, keeping the condenser coils clean helps the refrigerator run more efficiently, reducing strain on all components.
- **Listen for Unusual Noises:** Pay attention to any new or unusual sounds coming from the refrigerator, as these can be early indicators of a failing component.

7. WARRANTY AND SUPPORT

Specific warranty information for this Zhenx EAU63923603 Refrigerator Evaporator Fan Motor Assembly is not provided in this manual. For warranty details or technical support, please contact the seller or manufacturer directly.

When contacting support, please have your product model number (EAU63923603) and purchase information readily available.