

FOXXD C65

Generic FOXXD C65 Phone Case with Tempered Glass Screen Protector User Manual

INTRODUCTION

This manual provides comprehensive instructions for the installation, operation, and maintenance of your Generic FOXXD C65 Phone Case, which includes a tempered glass screen protector. The case features a 360-degree rotatable ring holder and is compatible with magnetic car mounts, offering enhanced functionality and protection for your FOXXD C65 smartphone.

WHAT'S IN THE BOX

- 1 x FOXXD C65 Phone Case
- 1 x Tempered Glass Screen Protector

SETUP

1. Installing the Phone Case

1. Ensure your FOXXD C65 phone is clean and free of dust or debris.
2. Align the phone with the case, starting with the top or bottom edge.
3. Gently press the phone into the case, ensuring all corners and edges are securely fitted. The case is designed with a soft silicone frame and hard PC backplane for shockproof protection.

SHOCKPROOF

Soft silicone frame + hard PC backplane, thickened four corners, and a silicone buffer layer in the middle, which is higher than the screen and camera design.

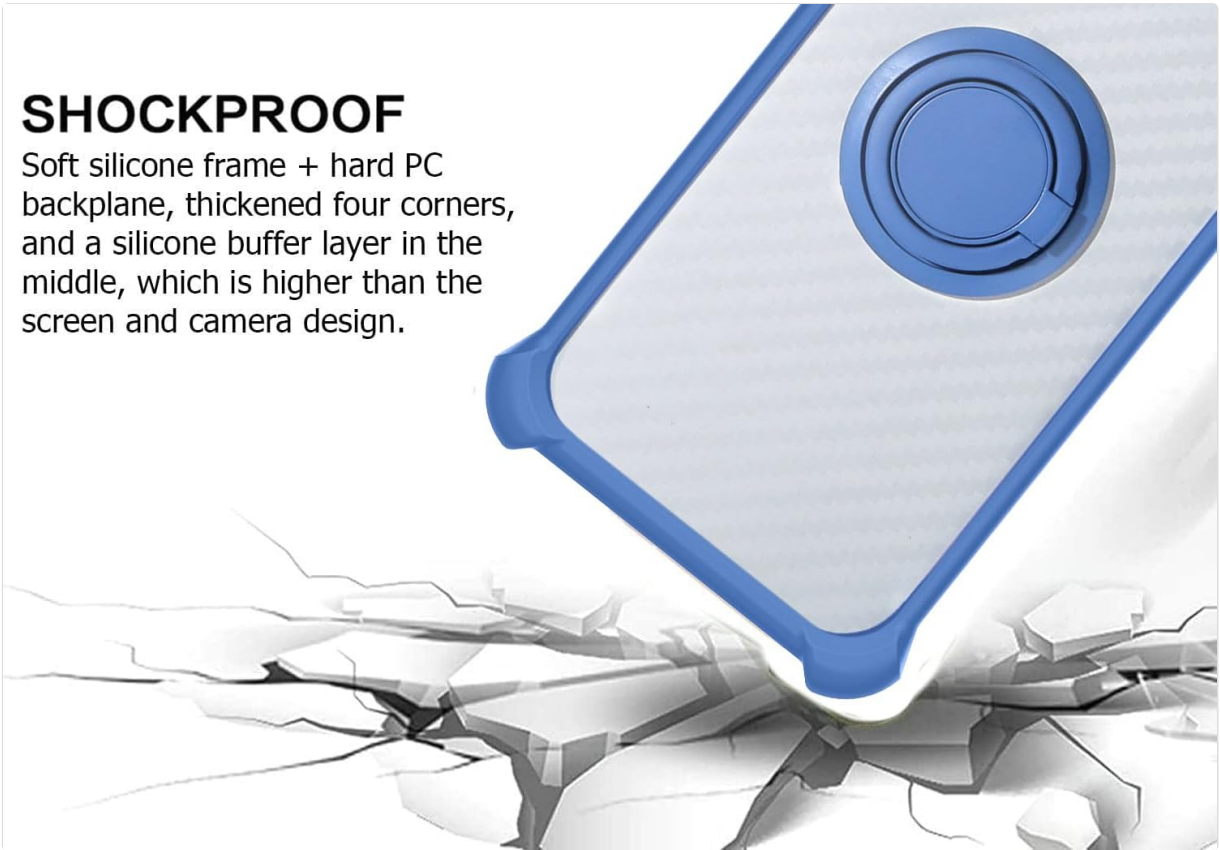


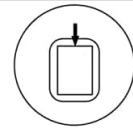
Image: The FOXXD C65 phone case, highlighting its shockproof design with reinforced corners and a clear back panel.

2. Installing the Tempered Glass Screen Protector

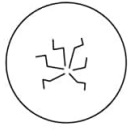
1. Clean your phone screen thoroughly using the provided cleaning wipes (if included) or a microfiber cloth to remove all dust, smudges, and fingerprints.
2. Carefully peel off the protective film from the adhesive side of the tempered glass.
3. Align the screen protector precisely with your phone's screen, ensuring the cutouts for the camera and sensors match.
4. Gently lower the screen protector onto the screen. It will adhere automatically.
5. If any bubbles appear, gently push them towards the edges of the screen using a soft cloth or squeegee.



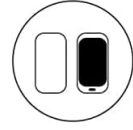
9H High Hardness



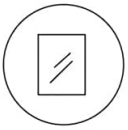
Perfect Adhesion



Shatterproof



Case Friendly



99.9% Super Transparency



Anti-fingerprint

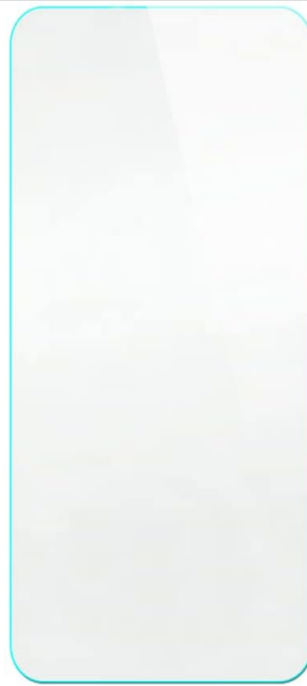


Image: Features of the tempered glass screen protector, including 9H high hardness, shatterproof design, perfect adhesion, case-friendly fit, 99.9% super transparency, and anti-fingerprint properties.



Scratch Proof

Scratch proof screen effectively avoids sharp objects scratching or abrasion

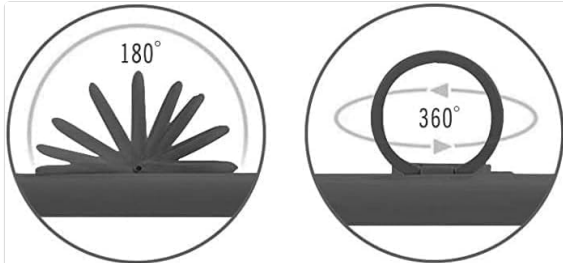


Image: A demonstration of the screen protector's scratch-proof capability, showing it withstands impact from a hammer.

OPERATING INSTRUCTIONS

1. Using the 360-Degree Rotatable Ring Holder

The integrated metal ring holder on the back of the case can rotate 360 degrees. This feature allows you to comfortably hold your phone, reducing the risk of drops, and also functions as a kickstand for hands-free viewing of videos or movies in both portrait and landscape orientations.



SUPPORT MAGNETIC CAR MOUNT

Not include magnetic car mount,
not support wireless charging.



Image: Visual representation of the ring holder's flexibility, demonstrating its 360-degree rotation and 180-degree flip for various viewing angles.



Image: A user demonstrating one-hand operation with the ring holder, showing how it improves reach across the phone screen.

2. Magnetic Car Mount Compatibility

The metal ring on the back of the case allows for direct adsorption onto magnetic car mount holders. This eliminates the need for additional patches, providing a simple and practical solution for using your phone for GPS navigation or music while driving. Please note that a magnetic car mount is not included with this product.

One-Hand Operation

Touch more spots on the screen

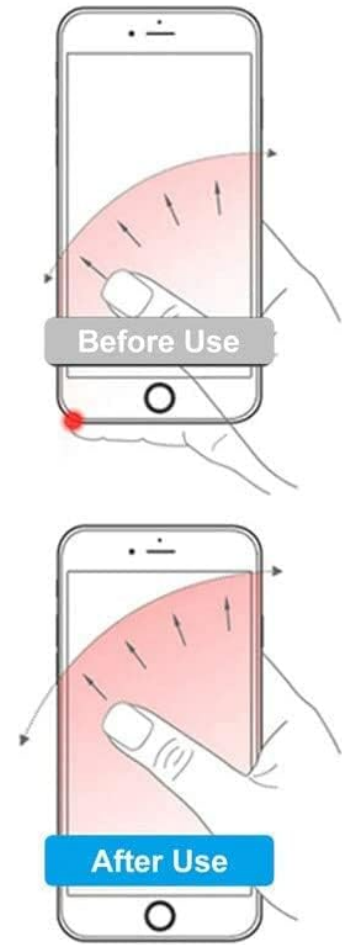


Image: The phone case with its integrated ring holder interacting with a magnetic car mount, demonstrating its magnetic adsorption capability.

3. Wireless Charging

This phone case does **not** support wireless charging due to the integrated metal ring holder. For charging, please remove the case or use a wired charger.

MAINTENANCE

1. Cleaning the Phone Case

The phone case is made of TPU material, which is scratch-proof and fingerprint-proof. To clean, gently wipe the case with a soft, damp cloth. Avoid using harsh chemicals or abrasive materials, as these may damage the case's finish or material.

2. Screen Protector Care

The tempered glass screen protector is designed to be anti-fingerprint. For cleaning, use a microfiber cloth to gently wipe away smudges. If necessary, a small amount of screen cleaner can be applied to the cloth, not directly to the screen protector.

TROUBLESHOOTING

- **Screen Protector Bubbles:** If bubbles appear after installation, gently lift the nearest edge of the protector and reapply, pushing the bubble out with a soft cloth. Ensure the screen is completely clean before reapplication.
- **Ring Holder Stiffness:** If the ring holder feels stiff, gently rotate it a few times to loosen the mechanism. Avoid excessive force.
- **Magnetic Mount Adhesion:** Ensure the magnetic car mount surface is clean and free of obstructions for optimal adhesion with the case's metal ring.
- **Wireless Charging Not Working:** As stated, the case is not compatible with wireless charging. This is expected behavior.

SPECIFICATIONS

Brand	Generic
Compatible Phone Models	FOXX FOXXD C65
Compatible Devices	FOXX FOXXD C65
Material	Polyurethane (TPU)
Water Resistance Level	Not Water Resistant
Additional Features	360 Rotating Ring, Magnetic Car Mount Compatible, Shockproof Design
Form Factor	Basic Case
Item Dimensions	0.39 x 0.39 x 0.39 inches (approximate)
Built-In Media	1*Phone Case, 1*Tempered Glass Screen Protector

WARRANTY AND SUPPORT

Specific warranty information for this product is not provided in the available details. For any product-related inquiries, technical support, or warranty claims, please contact the seller directly through your purchase platform. Ensure you have your order details readily available for faster assistance.