



Manuals.plus /

› YJMKOI /

› YJMKOI W11030413 Range Control Knob User Manual

YJMKOI W11030413

YJMKOI W11030413 Range Control Knob User Manual

Model: W11030413 | Brand: YJMKOI

1. PRODUCT OVERVIEW

The YJMKOI W11030413 Range Control Knob is an upgraded replacement part designed for various Whirlpool and KitchenAid ranges, stoves, ovens, gas cooktops, and burners. This knob is engineered to offer enhanced durability and performance compared to original equipment manufacturer (OEM) parts.

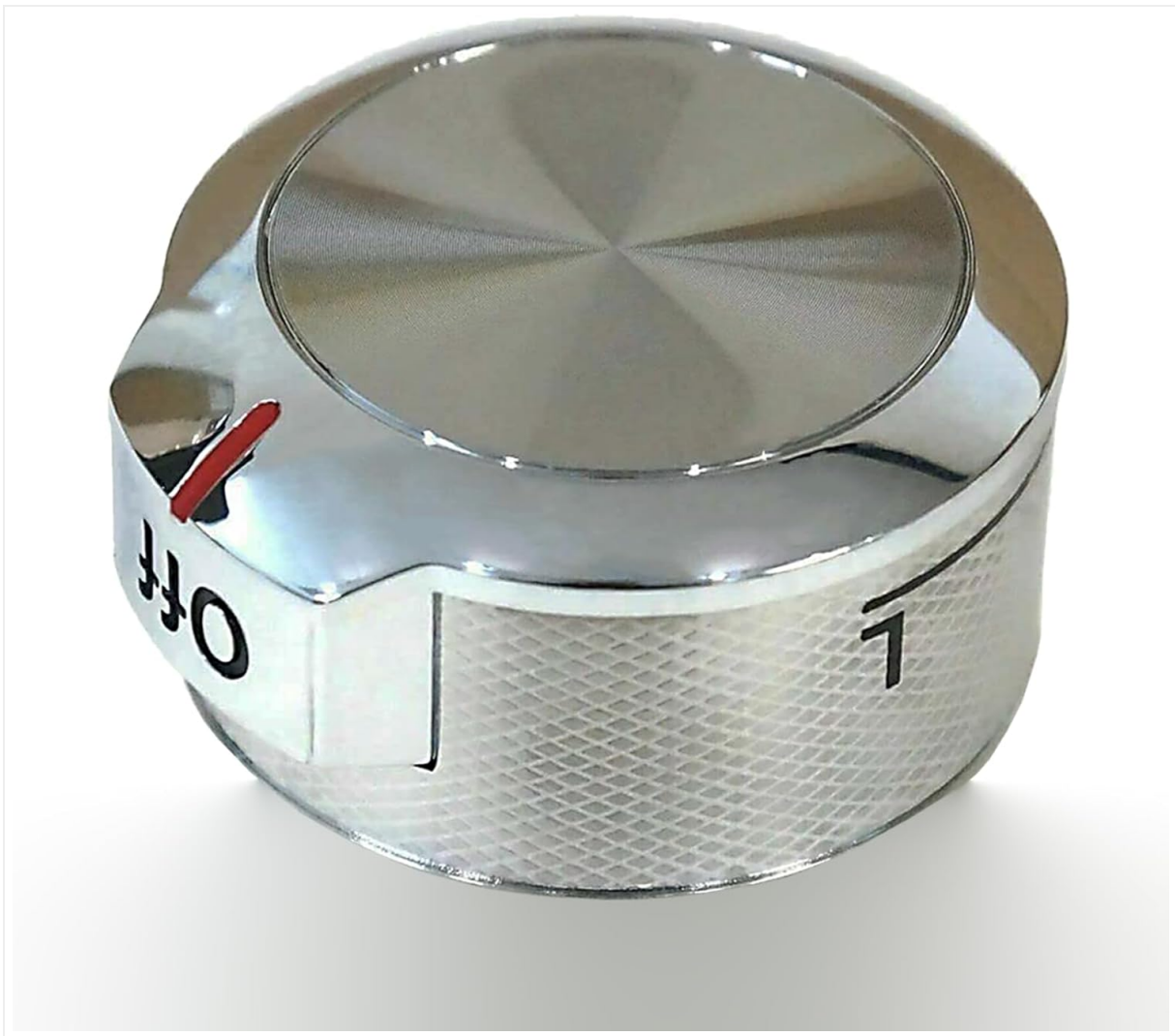


Figure 1: Front view of the W11030413 Range Control Knob.

2. FEATURES

- **High-Strength Alloy Construction:** Manufactured from high-strength alloy for improved durability and longevity.
- **Enhanced Resistance:** Features a special surface treatment process that significantly enhances resistance to corrosion, heat, grease, and fingerprints.
- **D-Ring Reinforcement:** Internal D-ring reinforcement treatment is applied to prolong the service life and exceed OEM manufacturing standards, making it sturdier than original knobs.
- **Ergonomic Design:** Designed for smooth and comfortable operation.

W11030413 Range Control Knob

High Quality

Robust and Durable Materials

Long Service Life

Easy Installation

Perfect fit



Figure 2: Key features of the control knob.



Figure 3: Various angles of the control knob, including the D-shaft.

Your browser does not support the video tag.

Video 1: Detailed view of the W11030413 Range Control Knob, showcasing its design and the upgraded D-shape alloy sheathed interior.

3. COMPATIBILITY

The W11030413 control knob is designed as a direct replacement for several part numbers and is compatible with a wide range of Whirlpool and KitchenAid models. Please verify your appliance's model number to ensure compatibility before installation.

3.1 Replacement Part Numbers

This knob can replace the following part numbers:

- W10643306
- W10786063
- W11027434
- 4461624
- PS11770322

- WPW11030413
- AP6038805

Replacement Models



Figure 4: Replacement part numbers for the W11030413 knob.

3.2 Compatible Appliance Models

Compatible with various models, including but not limited to:

- KFDD500ESS-Series (00/01/02/05/10)
- KFGD500EBL-Series (00/01/02/03/04)
- KFGD500EBS-Series (00/05/10)
- KFGD500ESS-Series (00/01/02/03/04/06/10)
- KFGD500EWH-Series (00/01/02/03/04/06/10)
- KFGG500EBL-Series (0/1/2)
- KFGG500EBS-Series (2/3/4/7)
- KFGG500ESS-Series (0/1/2/3)
- KFGG500EWH-Series (0/1/2/3/4/7)
- KFGG504KPS-Series (0/1/3)
- KFGS530ESS-Series (0/1/2)

For a complete list of compatible models, please refer to the product detail page or consult your appliance's manual.

Compatible With

Before purchasing, please confirm your own product model, so as not to affect the normal use!

COMPATIBLE MODELS:

KFDD500ESS00	KFDD500ESS01	KFDD500ESS02
KFDD500ESS05	KFDD500ESS10	
KFGD500EBL00	KFGD500EBL01	KFGD500EBL02
KFGD500EBL03	KFGD500EBL04	
KFGD500EBS00	KFGD500EBS05	KFGD500EBS10
KFGD500ESS00	KFGD500ESS01	KFGD500ESS02
KFGD500ESS03	KFGD500ESS04	KFGD500ESS06
KFGD500ESS10		
KFGD500EWH00	KFGD500EWH01	KFGD500EWH02
KFGD500EWH03	KFGD500EWH04	KFGD500EWH06
KFGD500EWH10	KFGG500EBL0	KFGG500EBL1
KFGG500EBL2	KFGG500EBS2	KFGG500EBS3
KFGG500EBS4	KFGG500EBS7	
KFGG500ESSO	KFGG500ESS1	KFGG500ESS2
KFGG500ESS3		
KFGG500EWH0	KFGG500EWH1	KFGG500EWH2
KFGG500EWH3	KFGG500EWH4	KFGG500EWH7
KFGG504KPS0	KFGG504KPS1	KFGG504KPS3
KFGS530ESSO	KFGS530ESS1	KFGS530ESS2



Figure 5: Partial list of compatible models.

4. INSTALLATION

The W11030413 range control knob is designed for easy, tool-free installation. Follow these steps to replace your old knob:

1. Ensure the appliance is turned off and cooled down before beginning installation.
2. Grasp the old knob firmly and pull it straight out from the control post. Avoid twisting or bending, as this may damage the post.
3. Align the D-shaped opening on the back of the new W11030413 knob with the D-shaped control post on your appliance.
4. Gently push the new knob onto the control post until it is fully seated and secure.
5. Test the knob by rotating it to ensure it turns smoothly and engages properly with the control mechanism.

Easy Installation

The new upgraded knob knobs are very easy to install, no tools are required, just a quick plug-and-play replacement to complete the installation.



Figure 6: Simple plug-and-play installation.

5. OPERATION

To operate your appliance using the W11030413 control knob, simply push the knob in and rotate it to the desired setting (e.g., OFF, LOW, MEDIUM, HIGH, or specific temperature). Ensure the knob is fully pushed in before rotating to engage the burner or oven control.

6. MAINTENANCE

To maintain the appearance and functionality of your W11030413 control knob, follow these simple maintenance tips:

- **Cleaning:** Wipe the knob regularly with a soft, damp cloth and mild soap. Avoid abrasive cleaners or harsh chemicals, as these can damage the surface treatment.
- **Drying:** Ensure the knob is completely dry after cleaning to prevent water spots.
- **Inspection:** Periodically check the knob for any signs of wear or damage. Ensure it remains securely attached to the control post.

7. TROUBLESHOOTING

If you encounter issues with your W11030413 control knob, consider the following common problems and solutions:

Problem	Possible Cause	Solution
Knob does not turn or push in properly.	Incorrect alignment with D-shaft; debris on control post; internal damage to knob or appliance mechanism.	Remove the knob and re-align it carefully with the D-shaft, ensuring it slides on smoothly. Clean the control post and the inside of the knob to remove any obstructions. If the issue persists, inspect the D-shaft on the appliance for damage. If the knob's internal D-ring is damaged, replacement may be necessary.
Knob feels loose or falls off.	Knob not fully seated; worn D-shaft on appliance; internal D-ring of knob is worn.	Push the knob firmly onto the control post until it clicks into place. Inspect the appliance's D-shaft for wear. If it's significantly worn, it may not hold any knob securely. If the knob's internal D-ring is visibly damaged or stretched, the knob may need replacement.

8. SPECIFICATIONS

- **Part Number:** W11030413
- **Material:** High-strength alloy
- **Color:** Silver
- **Product Dimensions:** 1"L x 1"W (approximate)
- **Exterior Finish:** Powder Coated
- **Item Weight:** 2.72 ounces
- **Handle Material:** Alloy Steel
- **Unit Count:** 1.0 Count (per pack)

9. WARRANTY AND SUPPORT

YJMKOI is committed to providing high-quality products and customer satisfaction. If you have any questions or experience any issues with your W11030413 Range Control Knob, please contact our customer service team. We aim to provide a satisfactory experience, and product dissatisfaction may qualify for a refund or exchange.

For assistance, please reach out to the seller directly through your purchase platform.