



Manuals.plus /

› SUNUV /

› SUNUV SUNone UV LED Nail Lamp User Manual

SUNUV SUNONE Pink

SUNUV SUNone UV LED Nail Lamp User Manual

Model: SUNONE Pink

1. PRODUCT OVERVIEW

The SUNUV SUNone UV LED Nail Lamp is a professional-grade device designed for curing all types of gel nail polishes. It features a dual UV and LED light source, smart auto-sensing, and multiple timer settings for efficient and convenient at-home or salon use.



Image: The SUNUV SUNone UV LED Nail Lamp, showcasing its sleek design and internal LED lights.

2. WHAT'S IN THE BOX & SETUP

Before first use, please ensure all components are present and inspect the device for any damage.

- SUN1 Nail Lamp
- 1.8m Power Adaptor
- User Manual (this document)
- Gel Polish Application Manual

Initial Setup:

1. Unpack the nail lamp and all accessories from the box.
2. Connect the 1.8m power adaptor to the lamp's power input port.
3. Plug the power adaptor into a suitable electrical outlet. The lamp is now ready for use.

HOW TO USE OUR SUN1 NAIL LAMP?

1. Apply a thin layer of the Gel Polishes according to its usage instructions to the clean, dry nail without touching the cuticle or skin alongside the nails.
2. Choose the appropriate timer (30s/60s) as per layer's requirements. The lamp will automatically shut off after the specified time. Or use the auto-sensor, it would turn on or off automatically when you put hand/foot in or out.
3. Please note that curing time vary based on gel polish brand. SUNUV nail lamp is for all kinds of gel polishes only, not for regular nail polish. Ensure that your polish is compatible before purchase. For the best results, avoid moving your hand too much until curing is completed.
4. If gel polish is a little sticky after curing, please use rubbing alcohol to wipe it away. Enjoy your beautiful manicure or pedicure with SUNUV nail dryer!
5. Only top coat can it be completely cured and dried. It is normal for the base coat and color gel polish to be a little sticky after drying! Because after the base coat and color gel polish being dried, there will be floating gel on it!
6. The base coat does not dry out and is a little sticky, which helps other nail polish glues to stick firmly. Nail polish needs to maintain its brightness, so it won't dry out completely.

Image: Illustration of the SUNUV SUNone Nail Lamp and its included accessories.

3. OPERATING INSTRUCTIONS

The SUNUV SUNone lamp is designed for ease of use with both manual timer settings and an automatic sensor.

Using the Timer Settings:

The lamp features three preset timer buttons: 5s, 30s, and 60s. These allow for precise curing times depending on the gel polish type and application layer.

- **5s:** Ideal for quick flash cures or single nail applications.
- **30s:** Recommended for base coats or thin layers of color gel polish.
- **60s:** Suitable for top coats, thicker gel layers, or builder gels.

To activate a timer, simply press the corresponding button. The lamp will turn on and run for the selected duration, then automatically shut off.

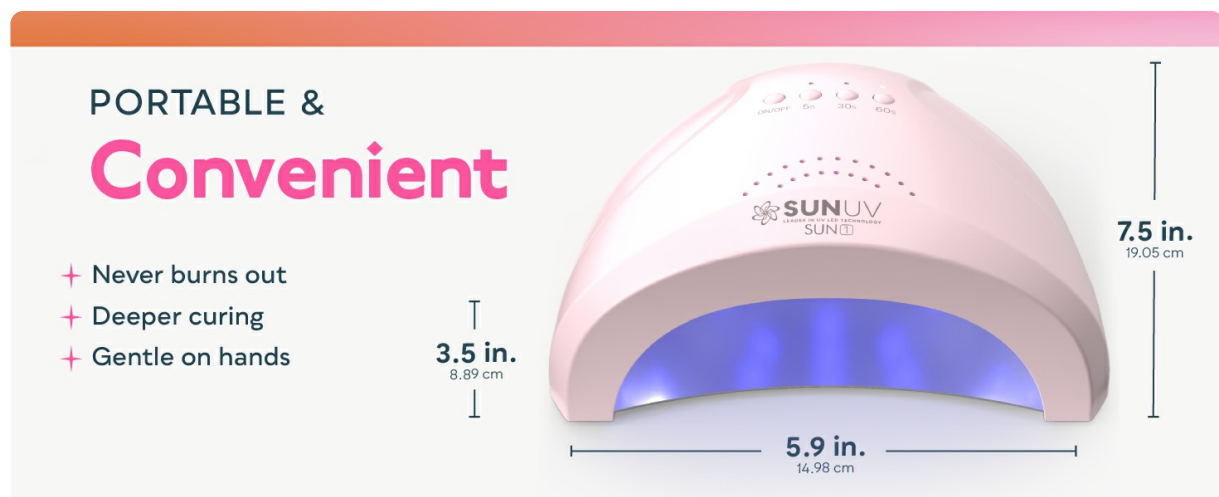


Image: Close-up of the SUNUV SUNone lamp's control panel, highlighting the 5s, 30s, and 60s timer buttons.

Automatic Sensor Operation:

The lamp is equipped with a smart infrared sensor. When your hand or foot is inserted into the lamp, it will automatically turn on. When removed, it will turn off. This feature is convenient for continuous use without repeatedly pressing buttons.

3-TIMER Settings

Easy to choose and control for every kind of UV gel nail polish

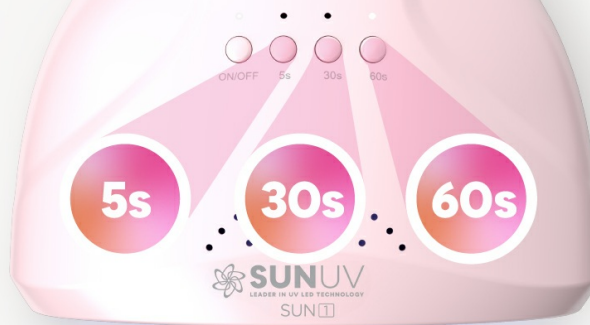


Image: Diagram illustrating the smart infrared sensor functionality: lamp turns on when hand is in, off when hand is out.

General Application Steps:

1. **Prep:** Clean and prep nails thoroughly. Apply a thin layer of base coat.
2. **Cure Base Coat:** Place nails under the lamp and cure as needed (e.g., 30s).
3. **Color:** Apply a thin layer of color gel polish. Repeat step 2 as per the manufacturer's instructions for each color layer.
4. **Shine:** Apply a top coat and cure (e.g., 60s). Wipe with acetone to remove any sticky residue and enhance shine.

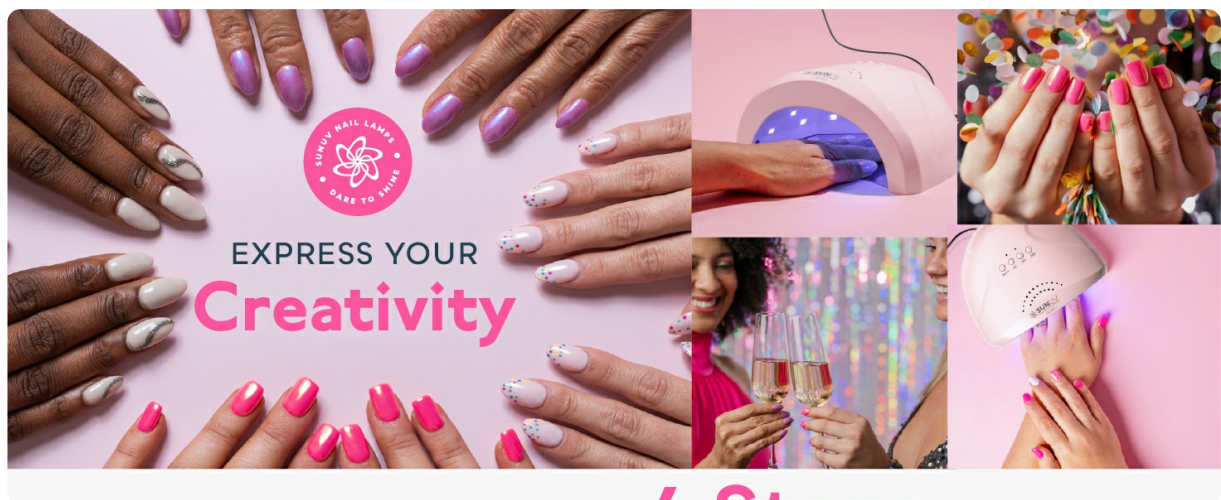


Image: Visual guide showing the four quick and easy steps for gel nail application using the SUNUV lamp.

4. MAINTENANCE

Proper maintenance ensures the longevity and optimal performance of your SUNUV SUNone Nail Lamp.

Cleaning the Removable Base:

The SUNUV SUNone features a mirrored and magnetic removable base, making it easy to clean and suitable for both manicures and pedicures.

- Gently detach the magnetic base from the main unit.
- Wipe the base and the interior of the lamp with a soft, dry cloth after each use to remove any dust or gel residue.
- For stubborn stains, use a cloth lightly dampened with rubbing alcohol. Ensure the lamp is unplugged before cleaning.

- Allow all parts to dry completely before reattaching the base.

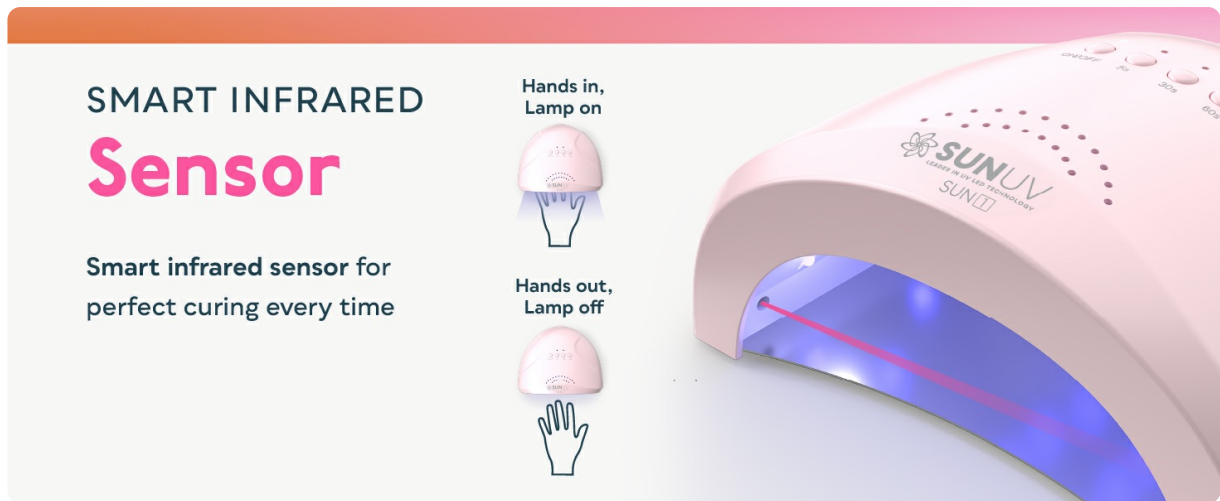


Image: The SUNUV SUNone lamp with its magnetic removable base detached, showing ample space for hands and feet.

5. TROUBLESHOOTING

Here are some common questions and tips regarding gel polish application and curing:

Why Won't My Gel Polish Cure?

- It is normal for the base coat and color gel polish to be slightly sticky after drying. This helps each layer adhere fully and firmly to the nail.
- Only the top coat will fully cure and dry to a non-tacky finish.
- Our SUNUV nail lamps are designed to cure and dry gel polishes only, not regular nail polish. Ensure your polish is gel-based.

My Gel Polish Is Taking Too Long To Dry.

- Curing time varies for each gel polish brand. Always refer to the recommended curing time for your specific polish.
- Apply thin layers of polish and cure each layer for 30-60 seconds. Avoid applying gel polish too thick.

How Do I Avoid My Gel Polish From Stinging?

- Make sure you clean up any gel polish that may have gotten on your skin or cuticles before curing.
- Do not apply gel polish too thick. Thicker layers can generate more heat during curing, leading to a stinging sensation.



6. SPECIFICATIONS

Feature	Detail
Model Name	SUNONE
Item Model Number	SUNONE Pink
Light Source	Hybrid UV (365nm) + LED (405nm) Lightbeads
LED Beads	30 high-power UV LED beads
Timer Settings	5s, 30s, 60s
Sensor	Smart Infrared Auto Sensor
Base	Mirrored & Magnetic Removable Base
Material	Acrylonitrile Butadiene Styrene (ABS)
Color	Baby Pink
Package Dimensions	10.31 x 6.65 x 3.98 inches
Item Weight	1.26 Pounds (0.57 Kilograms)
Manufacturer	SUNUV
Country of Origin	China
UPC	850052843267

HYBRID UV/LED
Lightbeads

365NM UV cures quickly +
405NM LED stabilizes gel & locks color

2X
FASTER

30
LEDS

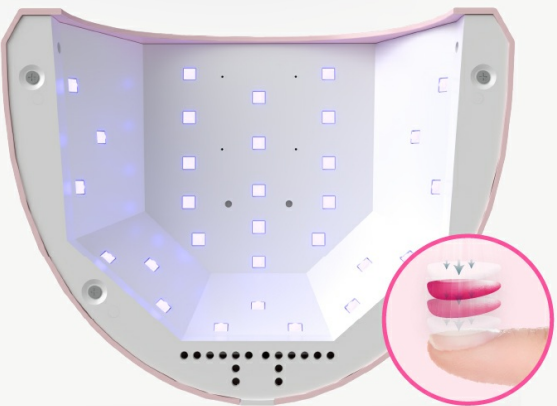


Image: Dimensions of the SUNUV SUNOne Nail Lamp, highlighting its portable and convenient size.



LEADER IN
UV + LED
Technology
SINCE 2013



HYBRID
UV/LED



EASY
TO USE



3 TIMER
SETTINGS



SMART
SENSOR



REMOVABLE
BASE

Image: Diagram illustrating the hybrid UV (365nm) and LED (405nm) lightbeads for deeper and faster curing.

7. WARRANTY AND SUPPORT

The SUNUV SUNone Nail Lamp typically comes with a 2-year warranty from the date of purchase. Please refer to the warranty information provided on the product packaging or contact SUNUV customer support for specific details regarding warranty claims and service.

For further assistance, technical support, or inquiries, please visit the official SUNUV website or contact their customer service department through the contact information provided with your product documentation.