

Manuals+

[Q & A](#) | [Deep Search](#) | [Upload](#)

[manuals.plus](#) /

> [LUVODI](#) /

> [LUVODI 32-inch Round LED Bathroom Mirror Instruction Manual \(Model: XMR-Y18-938-AU\)](#)

LUVODI XMR-Y18-938-AU

LUVODI 32-inch Round LED Bathroom Mirror Instruction Manual

Model: XMR-Y18-938-AU

INTRODUCTION

Thank you for choosing the LUVODI 32-inch Round LED Bathroom Mirror. This mirror is designed to enhance your bathroom experience with its advanced features, including adjustable 3-color backlit lighting, smart anti-fog function, and intuitive touch controls. Please read this manual thoroughly before installation and use to ensure proper function and safety.



The LUVODI 32-inch Round LED Bathroom Mirror, showcasing its elegant design and backlit illumination in a modern bathroom setting.

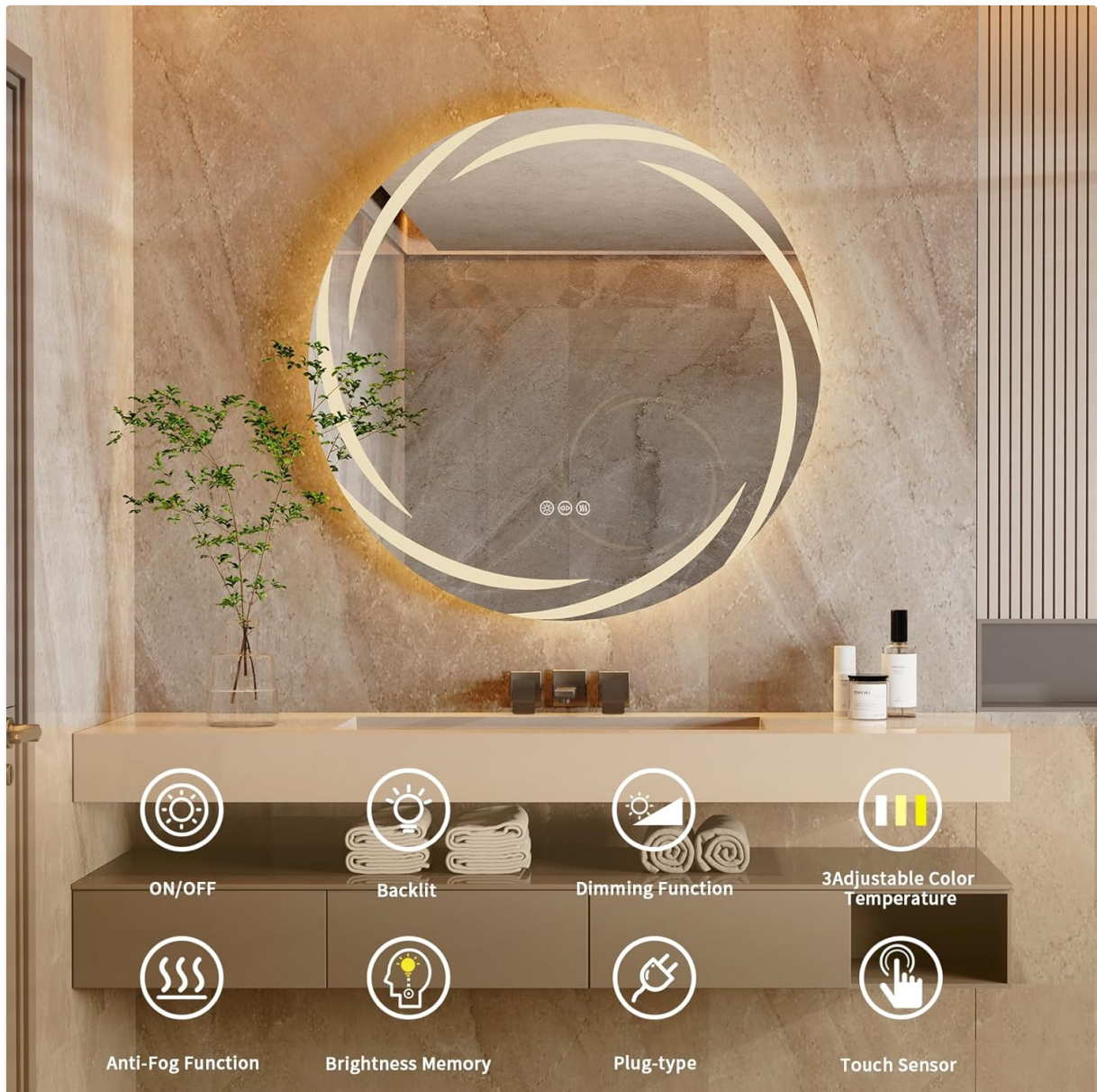
SAFETY INFORMATION

- Always follow the installation instructions provided. Do not install the mirror yourself if you are not qualified to do so.
- Keep the mirror away from water and heat sources.
- Be cautious when using the defogging function, as the mirror can become warm.
- Always unplug the mirror when not in use or when cleaning.
- Ensure the power supply is disconnected before any maintenance or cleaning.

PRODUCT FEATURES

- **HD Silver Mirror & IP56 Rated:** Made of copper-free silver-plated glass with CRI up to 95-97% for realistic skin tone display. The light strip is fully covered by silicone tube for water and dust protection, extending lighting service life to 50,000 hours. Inner electronic components are protected by a back panel, making the mirror IP56 waterproof.

- **Brightness Adjustable with 3 Lighting Colors:** Features 3 touch buttons to control brightness, lighting color, and defogging system independently. The NiteCore Extreme function allows changing color from white (6500K), natural (4500K), to warm (3500K). A memory function saves your preferred lighting status.
- **Anti-fog Function & Warm Sensor Light:** Built-in demister heats up to 40°C in 3-4 minutes and then maintains temperature, saving energy and preventing mirror damage. Demisting area: 300x300mm. Defogging is controlled independently. The sensor light is warm when off, allowing easy location at night without dazzling.
- **Plug In or Hard Wire:** Comes with pre-drilled hanging holes and mounting tools. Features one wire outlet groove at each side for easy cable management. Includes a built-in plug for wall switch installation, or the plug can be cut for direct wiring to mains (professional electrician required). Wire length: 1.5m.



An overview of the mirror's smart functions, including touch controls for power, dimming, color temperature adjustment, and the anti-fog feature.



The LUVODI LED mirror offers multiple lighting modes and intuitive touch controls for a personalized experience.

PACKAGE CONTENTS

Upon opening the package, please verify that all components are present and undamaged. The package typically includes:

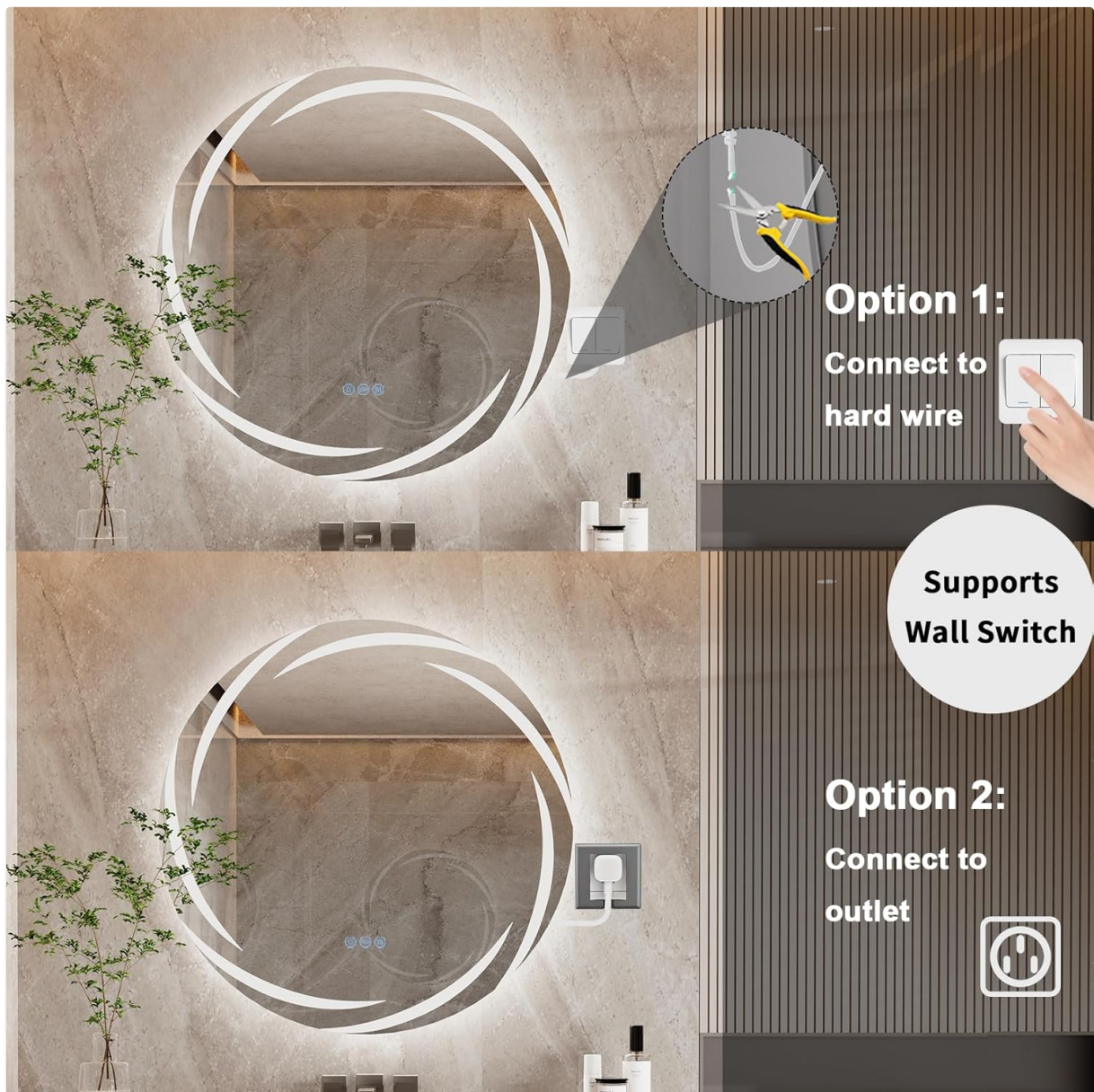
- LUVODI Round LED Bathroom Mirror Unit
- Mounting Hardware (screws, wall anchors)
- Power Cable with Plug
- Instruction Manual

This video demonstrates the unboxing process of a LUVODI round LED mirror, showing the protective packaging and initial components.

SETUP AND INSTALLATION

The LUVODI LED Bathroom Mirror offers flexible installation options to suit your needs. Ensure the mounting surface is sturdy and capable of supporting the mirror's weight (18.2 pounds).

1. **Choose Installation Method:** Decide whether to plug the mirror into a standard electrical outlet or hardwire it directly into your home's electrical system.
2. **Mark Mounting Points:** Use the provided template or measure carefully to mark the positions for the mounting screws on your wall. The mirror has pre-drilled hanging holes.
3. **Install Wall Anchors/Screws:** Drill pilot holes and insert appropriate wall anchors, then secure the mounting screws, leaving a small gap for the mirror to hang.
4. **Connect Power:**
 - **Plug-in:** Simply plug the mirror's power cable into a nearby electrical outlet. The wire outlet groove on the mirror's side helps manage the cable neatly.
 - **Hardwire:** For a seamless look, you can cut off the plug and hardwire the mirror directly to your mains. **This must be performed by a qualified professional electrician to ensure safety and compliance with local electrical codes.**
5. **Mount the Mirror:** Carefully lift the mirror and align the hanging holes with the installed screws. Gently lower the mirror until it is securely seated.



The mirror offers flexible installation: either plug it into a standard outlet or hardwire it directly into your electrical system (professional installation recommended for hardwiring). Both methods support control via a wall switch.

OPERATING INSTRUCTIONS

Your LUVODI LED Bathroom Mirror features intuitive touch controls located on the mirror surface.

1. **Power On/Off:** Tap the power symbol (usually a circle) to turn the LED lights on or off.
2. **Adjust Lighting Color:** Tap the color temperature symbol (often a sun or color wheel icon) to cycle through the three available lighting colors: warm (3500K), natural (4500K), and white (6500K).
3. **Adjust Brightness (Dimming):** Press and hold the power symbol or a dedicated dimming symbol (if present) to adjust the brightness level. Release when the desired brightness is achieved. The mirror features stepless dimming.
4. **Activate Anti-Fog:** Tap the defogging symbol (often a wavy lines icon) to activate the anti-fog function. The built-in demister will heat the mirror surface to 40°C within 3-4 minutes and then maintain this temperature to keep the mirror clear. This function operates independently of the lights.
5. **Memory Function:** The mirror remembers your last used brightness and color temperature settings, so you don't need to readjust them every time you turn it on.
6. **Wall Switch Control:** If hardwired, the mirror can also be controlled by a wall switch, which also features a memory function.



This image illustrates the mirror's versatile lighting options, allowing users to switch between warm (3500K), natural (4500K), and white (6500K) light, and adjust brightness levels.



Effective Anti Fog Function

Extra large demister pad, demisting speed increased by 56%



The mirror's anti-fog feature in action, showing a clear viewing area even in a steamy environment, highlighting the extra-large demister pad.

An official product video showcasing the LUVODI Hurricane Design Round Dimmable LED Bathroom Mirror, demonstrating its features and aesthetic appeal.

MAINTENANCE

- **Cleaning the Mirror Surface:** Use a soft, lint-free cloth and a non-abrasive glass cleaner. Spray the cleaner onto the cloth, not directly onto the mirror, to prevent liquid from seeping into the electrical components.
- **Cleaning the Frame:** Wipe the aluminum frame with a soft, damp cloth. Avoid harsh chemicals or abrasive materials.
- **Electrical Components:** Ensure the mirror is unplugged or the power supply is off before cleaning any electrical parts. Do not spray water directly onto the mirror's back or electrical connections.
- **Component Replacement:** All components are designed to be replaceable separately. If you encounter an issue, contact customer support for guidance on obtaining replacement parts.

TROUBLESHOOTING

Problem	Possible Cause	Solution
Lights do not turn on	No power supply; loose connection; faulty switch	Check if the mirror is plugged in or hardwired correctly. Ensure the wall switch is on. Verify connections.
Anti-fog function not working	Anti-fog not activated; power issue	Tap the defogging button. Check power supply.
Lights flicker or dim unexpectedly	Unstable power; internal wiring issue	Ensure stable power. If issues persist, contact customer support.
Touch controls unresponsive	Temporary glitch; power interruption	Turn off power for 30 seconds and then restore. Clean the touch sensor area.

If you encounter any issues not listed here or if the suggested solutions do not resolve the problem, please contact LUVODI customer support for assistance.

SPECIFICATIONS

Feature	Detail
Brand	LUVODI
Model Number	XMR-Y18-938-AU
Shape	Round
Product Dimensions	31.5"L x 31.5"W
Item Weight	18.2 Pounds
Frame Material	Aluminum
Finish Type	Polished
Mounting Type	Wall Mount
Special Features	Backlit & front frosted light transmission, Largest Defogging Area, Stepless Dimming, Three-Smart Touch Button Independent Control, Wall Switch Control & Memory Function
Color Temperature	3500K (Warm), 4500K (Natural), 6500K (White)
Waterproof Rating	IP56
Assembly Required	Yes

Wire Outlet Groove



Detailed dimensions of the 31.5-inch round mirror and its slim profile, along with the convenient wire outlet groove designed for neat cable routing during installation.



The LUVODI LED mirror offers multiple lighting modes and intuitive touch controls for a personalized experience.

WARRANTY AND SUPPORT

LUVODI is committed to providing high-quality products and excellent customer service. All components of this mirror are designed to be replaceable separately, making repairs straightforward.

For any issues, questions, or to inquire about replacement parts, please contact LUVODI customer support. Our professional team is ready to provide quick and effective solutions.

Please refer to your purchase documentation for specific warranty terms and contact information.

