

Manuals.plus /

- › Canon /
- › Canon imagePROGRAF TM-240 24-inch Large Format Printer User Manual

Canon TM-240

Canon imagePROGRAF TM-240 24-inch Large Format Printer User Manual

Model: TM-240

1. INTRODUCTION

This manual provides essential instructions for the safe and efficient operation of your Canon imagePROGRAF TM-240 24-inch Large Format Printer. Please read this manual thoroughly before using the printer and retain it for future reference.

Product Overview

The Canon imagePROGRAF TM-240 is a 24-inch large format printer designed for high-quality poster and plotter printing. It features a 5-color pigment ink system, automatic media detection, and color calibration capabilities, making it suitable for various professional applications.



Figure 1.1: Front view of the Canon imagePROGRAF TM-240 printer.

Key Features

- **Enhanced Speed:** The L-COA PRO II processor enables printing speeds of approximately 3.2 pages per minute for 24 x 36-inch sheets, representing a 30% increase over previous models.
- **High-Resolution Printing:** Equipped with a 6-channel PF-06 printhead, it delivers a maximum resolution of 2400 x 1200 dpi, producing sharp lines and detailed text with 5 picoliter ink droplets.
- **5-Color Pigment Ink System:** Features a newly formulated magenta ink, providing UV and water-resistant prints suitable for outdoor conditions and various media types.
- **Color Calibration:** The TM-240 supports color calibration to ensure consistent color quality across prints and devices over time.
- **Automatic Media Detection:** The printer automatically identifies media type, length, and width, displaying this information on the user interface.



Figure 1.2: Overview of printer features including roll media support, 5-color ink, automatic media detection, cut sheet printing, tiltable touchscreen, and flat top design for easy loading.

2. WHAT'S IN THE BOX

Verify that all the following items are included in your package before proceeding with setup:

- Canon imagePROGRAF TM-240 24" Large Format Printer
- Inkjet Cartridges (PFI-030 Matte Black (80 ml), PFI-030 Black (55 ml), PFI-030 Yellow (55 ml), PFI-031 Magenta (55 ml), PFI-030 Cyan (55 ml) - total 300 ml of ink)
- Roll Holder
- Documentation (User Guide, Safety Information, etc.)
- Power Cord

WHAT'S IN THE BOX

imagePROGRAF TM-240 24" Large Format Printer



Roll Holder



Ink Cartridges

(Ships with 300 ml of ink)

- PFI-030 Matte Black (80 ml)
- PFI-030 Black (55 ml)
- PFI-030 Yellow (55 ml)
- PFI-031 Magenta (55 ml)
- PFI-030 Cyan (55 ml)



Documentation



Power Cord

Figure 2.1: Contents of the Canon imagePROGRAF TM-240 package.

3. SETUP GUIDE

Follow these general steps to set up your Canon imagePROGRAF TM-240 printer. Refer to the included "Documentation" for detailed, step-by-step instructions.

3.1 Unpacking and Placement

1. Carefully remove the printer and all components from the packaging.
2. Place the printer on a stable, level surface with adequate space for operation and ventilation. Ensure the printer dimensions (29.4"D x 38.5"W x 17.2"H) are accommodated.
3. Remove all protective tapes and packing materials from the printer.

3.2 Power Connection

1. Connect the power cord to the printer's power input and then to a grounded electrical outlet.

2. Press the power button to turn on the printer.

3.3 Ink Cartridge Installation

Install the provided ink cartridges into their respective slots. The printer features a sub ink tank system, allowing for ink cartridge replacement during printing to minimize downtime.



Figure 3.1: Ink cartridge installation and the sub ink tank system.

3.4 Media Loading

The printer supports various media types, including banner paper, glossy photo paper, high-resolution paper, and plain paper, up to 24 inches wide. The flat top design facilitates easier media loading.

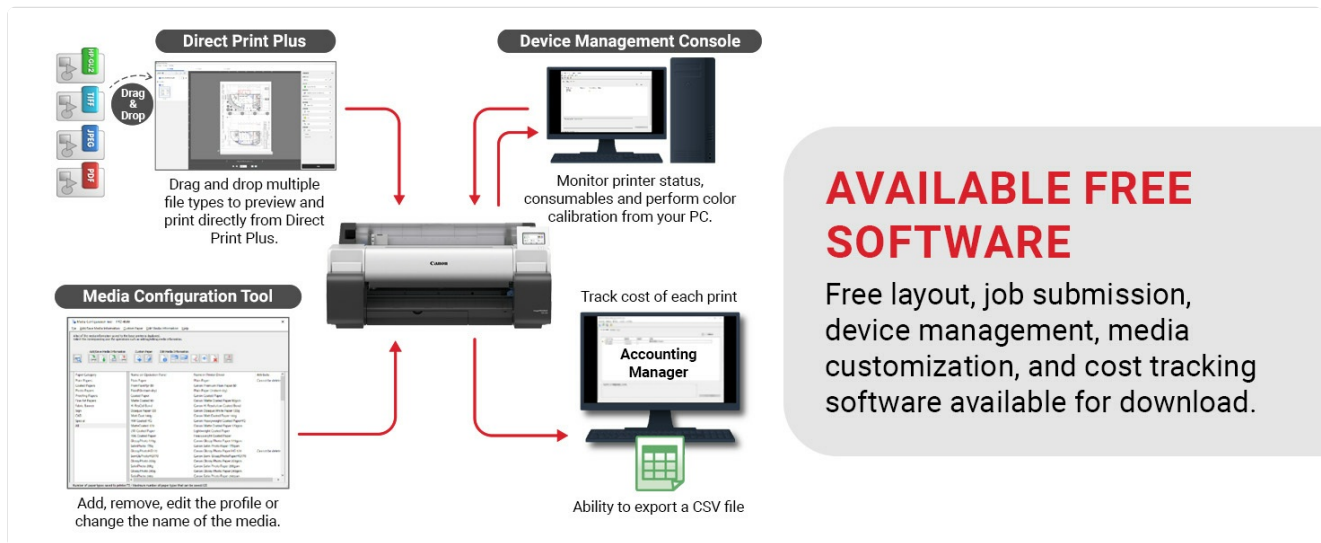


Figure 3.2: Media handling and automatic detection process.

3.5 Driver and Software Installation

Install the necessary printer drivers and utility software from the provided installation media or Canon's official website. This includes tools for device management and media configuration.

4. OPERATING INSTRUCTIONS

4.1 Basic Printing

1. Ensure the printer is powered on and connected to your computer via Ethernet, USB, or Wi-Fi.
2. Load the desired media into the printer. The automatic media detection system will identify the media type and size.
3. Open the document or image you wish to print on your computer.
4. Select the Canon imagePROGRAF TM-240 from your printer options.
5. Adjust print settings as needed (e.g., paper type, print quality, color management).
6. Initiate the print job.

4.2 Using the Touchscreen Interface

The printer features a tiltable intuitive touchscreen user interface for direct control over settings, media information, and printer status.

4.3 Color Calibration

To maintain consistent color output, perform color calibration periodically. This function is accessible through the printer's utility software or the control panel. Refer to the detailed documentation for calibration procedures.

4.4 Available Software

The Canon imagePROGRAF TM-240 comes with several free software tools to enhance your printing workflow:

- **Direct Print Plus:** Allows drag-and-drop printing of multiple file types directly to the printer.
- **Device Management Console:** Monitor printer status, consumables, and perform color calibration from your PC.
- **Media Configuration Tool:** Add, remove, or edit media profiles and names.
- **Accounting Manager:** Track printing costs and export data as a CSV file.
- **PosterArtist Online:** A web-based application for creating professional posters and flyers using templates.



RETAIL

Print eye-catching posters, signs, and more with the 5-color pigment ink system on a wide variety of media.

Figure 4.1: Overview of free software tools for the imagePROGRAF TM-240.

5. MAINTENANCE

Regular maintenance ensures optimal performance and longevity of your printer.

5.1 Ink Cartridge Replacement

When an ink cartridge runs low or is empty, the printer will notify you. Thanks to the sub ink tank system, you can replace cartridges without interrupting ongoing print jobs. Follow the instructions on the printer's display or in the user manual for safe replacement.

5.2 Printhead Maintenance

The printer's printhead is a critical component. If print quality degrades (e.g., streaks, missing lines), perform printhead cleaning or alignment through the printer's maintenance menu or utility software. Consult the detailed documentation for specific procedures.

5.3 Cleaning the Printer

Periodically wipe the exterior of the printer with a soft, damp cloth. Avoid using abrasive cleaners or solvents. Keep the media path free of dust and debris.

6. TROUBLESHOOTING

This section addresses common issues you might encounter. For more complex problems, refer to the comprehensive troubleshooting guide in your product documentation or contact Canon support.

6.1 Printer Not Responding

- Check if the printer is powered on and the power cord is securely connected.
- Verify the network (Ethernet/Wi-Fi) or USB connection between the printer and your computer.
- Restart both the printer and your computer.
- Ensure printer drivers are correctly installed and updated.

6.2 Poor Print Quality

- Check ink levels and replace any low or empty cartridges.
- Perform printhead cleaning and alignment from the printer's maintenance menu.
- Ensure you are using appropriate media for your print settings.
- Run a color calibration to correct color inconsistencies.

6.3 Media Loading Issues

- Ensure the media is loaded correctly and aligned with the guides.
- Check for any obstructions in the media path.
- Verify that the media type and size are supported by the printer and correctly detected.

7. SPECIFICATIONS

Feature	Detail
Model Name	imagePROGRAF TM-240 24" Large Format Printer
Model Number	6242C002AC
Product Dimensions (DxWxH)	29.4" x 38.5" x 17.2"
Item Weight	88.2 pounds
Printing Technology	Inkjet
Printer Output	Color
Maximum Print Resolution	2400 x 1200 dpi
Max Print Speed (Monochrome)	2.4 ppm (24x36" sheet)
Max Print Speed (Color)	2.4 ppm (24x36" sheet)
Maximum Media Size	24 inches wide (Arch C - 18 x 24 inches)
Print Media Types	Banner paper, Glossy photo paper, High-resolution paper, Plain paper
Ink Type	5-color Pigment Ink
Connectivity Technology	Ethernet, USB 2.0, Wi-Fi
Special Feature	Display Screen
Manufacturer	Canon U.S.A.
UPC	013803359893

8. WARRANTY AND SUPPORT

8.1 Limited Warranty

The Canon imagePROGRAF TM-240 printer is covered by a Limited Warranty. Please refer to the warranty card included in your product documentation for specific terms, conditions, and duration of coverage.

8.2 Customer Support

For technical assistance, troubleshooting, or service inquiries, please visit the official Canon support website or contact Canon customer service. Contact information can be found in your product documentation or on the Canon website. Online resources often include FAQs, driver downloads, and additional user guides.