

## Google GA01331-INTL

# Google Nest Hub (2nd Gen) User Manual

Model: GA01331-INTL

## 1. PRODUCT OVERVIEW

---

The Google Nest Hub (2nd Gen) is a 7-inch smart display designed to be the central hub of your connected home. It integrates seamlessly with Google Assistant, allowing for voice and touch control of various smart devices, entertainment, and personal routines.

Key features include:

- Enhanced speaker for music and video playback.
- Compatibility with Nest speakers and displays for whole-home communication.
- Privacy controls, including a mic switch.
- Access to streaming services like Netflix and YouTube.
- Sleep Sensing feature for tracking sleep patterns (when placed on a bedside table).



Figure 1: Front view of the Google Nest Hub (2nd Gen) showing its display and fabric base.

## 2. SETUP

---

Follow these steps to set up your Google Nest Hub (2nd Gen):

1. **Power Connection:** Connect the included power adapter to the Nest Hub and plug it into a wall outlet. The device will automatically power on.
2. **Language Selection:** The device may initially display in a foreign language. This will be resolved during the Google Home app setup.
3. **Google Home App:** Download and open the Google Home app on your smartphone or tablet.
4. **Add Device:** In the Google Home app, tap the '+' icon to add a new device. Follow the on-screen prompts to set up your Nest Hub.
5. **Wi-Fi Connection:** The app will guide you through connecting your Nest Hub to your home Wi-Fi network.
6. **Google Account Link:** Link your Google account to the Nest Hub for personalized features and access to your services.
7. **Updates:** Allow the device to download and install any available software updates. This may require a reboot.

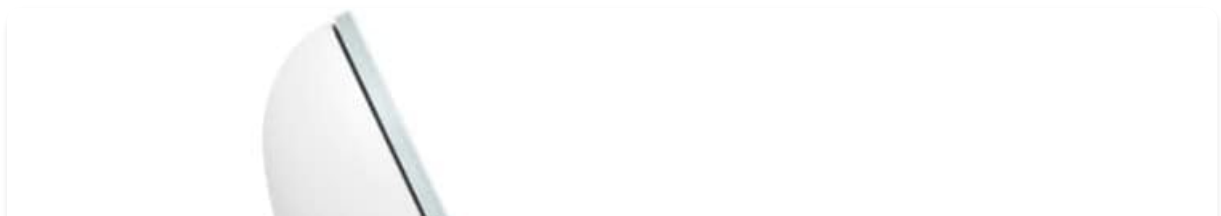




Figure 2: Side profile of the Google Nest Hub (2nd Gen), highlighting its compact design.

### 3. OPERATING INSTRUCTIONS

---

The Google Nest Hub (2nd Gen) can be operated using voice commands or its touch screen.

## Voice Commands:

Begin commands with "Hey Google" or "Ok Google".

- **Smart Home Control:** "Hey Google, turn on the living room lights." "Hey Google, show me the front door camera."
- **Entertainment:** "Hey Google, play music on Spotify." "Hey Google, open Netflix." "Hey Google, play [song/artist] on YouTube."
- **Information:** "Hey Google, what's the weather like today?" "Hey Google, set a timer for 10 minutes." "Hey Google, add milk to my shopping list."
- **Communication:** "Hey Google, broadcast 'Dinner is ready'." "Hey Google, call [contact name]."

## Touch Screen Navigation:

- **Swipe Down:** Access quick settings and controls.
- **Swipe Up:** Access media controls and app shortcuts.
- **Swipe Left/Right:** Navigate through different home screens and information cards (e.g., weather, calendar, photos).
- **Tap:** Select items, open apps, or confirm actions.



Figure 3: The Nest Hub displaying a live feed from a connected doorbell camera, demonstrating smart home integration.

## 4. MAINTENANCE

---

To ensure optimal performance and longevity of your Google Nest Hub (2nd Gen):

- **Cleaning:** Use a soft, dry, lint-free cloth to clean the screen and exterior. Avoid abrasive cleaners or sprays.
- **Software Updates:** Ensure your device is connected to Wi-Fi to receive automatic software updates. These updates provide new features, security enhancements, and bug fixes.
- **Placement:** Place the device on a stable, flat surface away from direct sunlight, heat sources, and excessive moisture.
- **Microphone Switch:** Utilize the physical microphone switch on the back of the device to disable the microphone for privacy when not in use.



Figure 4: Rear view of the Nest Hub, showing the power input and the physical microphone toggle switch for privacy.

## 5. TROUBLESHOOTING

---

Common issues and their solutions:

Problem	Solution
Device starts in a foreign language.	This is normal for some international models. Use the Google Home app on your phone to complete the setup; it will automatically switch to English during the process.
Cannot connect to Wi-Fi.	Ensure your Wi-Fi network is active and you are entering the correct password. Try moving the Nest Hub closer to your router. Rebooting both the Nest Hub and your router may resolve the issue.
Device freezes or is unresponsive.	Try rebooting the Nest Hub. You can do this through the Google Home app or by unplugging the power adapter for 10 seconds and then plugging it back in. Ensure the device has the latest software updates.
Voice commands not recognized.	Ensure the microphone switch on the back of the device is not turned off. Speak clearly and ensure there isn't excessive background noise. Check your internet connection.

## 6. SPECIFICATIONS

---

- **Manufacturer:** Google
- **Model Number:** GA01331-INTL
- **Color:** Chalk

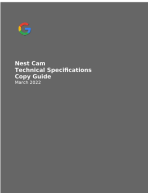





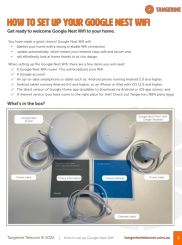
- **Screen Size:** 7 Inches
- **Display Resolution:** 1024 x 600 Pixels
- **Item Weight:** 2.23 pounds
- **Product Dimensions:** 4 x 4 x 2 inches
- **Power Source:** Corded Electric
- **Connectivity Protocol:** Wi-Fi, Bluetooth
- **Included Components:** Power Cable and Quick Start Guide

## 7. WARRANTY AND SUPPORT

This Google Nest Hub (2nd Gen) comes with a**90-day warranty** as specified by the manufacturer. For further assistance, troubleshooting, or to explore more Google products, please visit the[Official Google Store on Amazon](#). Additional protection plans may be available for purchase, such as a 2-Year Protection Plan or Complete Protect monthly plan. Please refer to your purchase details for more information.

### Related Documents - GA01331-INTL

	<p><a href="#">Google Nest Cam Technical Specifications and Copy Guide</a></p> <p>Comprehensive technical specifications, features, and update history for the Google Nest Cam, detailing its video, audio, connectivity, power, and environmental resistance capabilities.</p>
	<p><a href="#">Google Nest Cam Setup Guide</a></p> <p>A concise guide to setting up your Google Nest Cam, detailing included components and support resources.</p>
	<p><a href="#">Google Nest Cam and Floodlight Setup, Safety, and Warranty Guide</a></p> <p>Comprehensive guide for setting up, installing, and understanding the safety, warranty, and regulatory information for the Google Nest Cam with Floodlight.</p>
	<p><a href="#">Google Nest Wifi: Setup, Safety, Warranty, and Regulatory Guide</a></p> <p>Comprehensive guide for Google Nest Wifi, covering setup instructions, safety precautions, regulatory compliance, and the limited warranty for the USA and Canada. Includes model details and support information.</p>



## [How to Set Up Your Google Nest Wifi Router](#)

A step-by-step guide to setting up your Google Nest Wifi router for a seamless home Wi-Fi experience. Learn about connecting the router, using the Google Home app, and optimizing your network.



## [Google Home Mini User Guide: Setup, Features, and Voice Commands](#)

Comprehensive guide for the Google Home Mini smart speaker, covering setup, device overview, voice commands, smart home integration, media playback, privacy settings, and troubleshooting.