

Manuals+

[Q & A](#) | [Deep Search](#) | [Upload](#)

[manuals.plus](#) /

› [Masterbuilt](#) /
› [Masterbuilt Autolgnite 545 Digital Charcoal Grill and Smoker Combo for Easy Grilling, Digital Control, App, Sear Plate, Mini Hopper and 545 BBQ Cooking Square In. in Black](#)

Masterbuilt MB20041124

Masterbuilt Autolgnite 545 Digital Charcoal Grill and Smoker Combo User Manual

Model: Autolgnite 545 (MB20041124)
Brand: Masterbuilt

PRODUCT OVERVIEW

The Masterbuilt Autolgnite 545 Digital Charcoal Grill and Smoker offers the rich, smoky flavor of charcoal grilling with the convenience of automatic ignition. Designed for ease of use, this unit features a QuickStart™ auto-ignition system, a DigitalFan™ for precise temperature control, and a MiniHopper™ for extended cooking times. It also includes a QuickSear™ cast iron hopper sear plate for versatile cooking options, from low-and-slow smoking to high-heat searing.



Figure 1: Masterbuilt Autolignite 545 Digital Charcoal Grill and Smoker. This image shows the full grill unit with its digital control panel and side shelves.

SETUP AND ASSEMBLY

Before first use, ensure all components are present and assembled according to the included assembly guide. Proper assembly is crucial for safe and efficient operation.

Initial Setup Steps:

1. **Unpack and Inspect:** Carefully remove all parts from the packaging. Verify that all components listed in the assembly manual are present and undamaged.
2. **Assemble the Grill:** Follow the step-by-step instructions provided in the separate assembly manual. Ensure all screws and fasteners are securely tightened.
3. **Placement:** Position the grill on a stable, level, non-combustible surface outdoors, away from any flammable materials, structures, or overhead obstructions. Ensure adequate ventilation.
4. **Power Connection:** Connect the grill to a grounded electrical outlet.

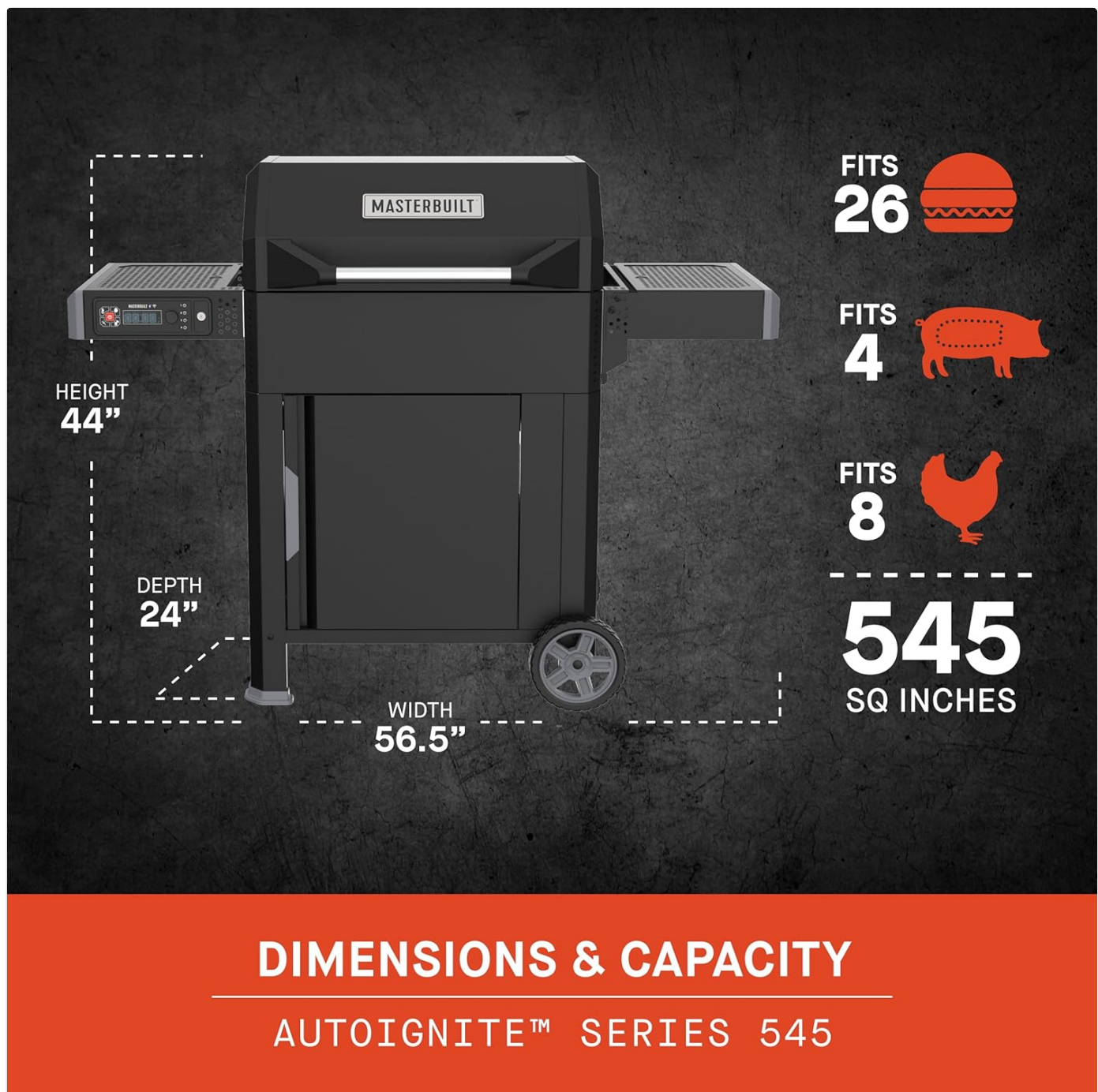


Figure 2: Grill Dimensions and Capacity. This diagram illustrates the height, depth, and width of the grill, along with its cooking capacity in square inches and the number of burgers, pork butts, or chickens it can accommodate.

OPERATING INSTRUCTIONS

QuickStart™ Auto-Ignition:

The QuickStart™ system simplifies charcoal ignition, making it as easy as lighting a gas grill.

1. **Plug in and Power On:** Plug the grill into a grounded outlet and press the power button on the digital control panel to turn on the controller.
2. **Preheat Ignitor:** Press the QuickStart™ auto-ignition button to begin preheating the ignitor.
3. **Set Temperature:** Use the digital control panel to set your desired cooking temperature. The DigitalFan™ will work to maintain this temperature.
4. **Load Charcoal:** Fill the MiniHopper™ with up to 5 lbs of lump charcoal or 7 lbs of briquettes. This provides up to 8 hours of cooking time.

5. **Insert Firestarter:** Once the QuickStart™ button stops flashing, place a Masterbuilt firestarter into the side firestarter holder and slide it into position. The ignitor will light the firestarter.
6. **Monitor Cooking:** Allow the grill and DigitalFan™ to reach and maintain your desired cooking temperature.



QUICKSTART™ AUTO-IGNITION

Light fire starter with the push of a button.

Figure 3: QuickStart™ Auto-Ignition. This image highlights the button used to light the fire starter with a single press.



DIGITAL CONTROL PANEL

Set desired cooking temperature and time.

Figure 4: Digital Control Panel. This panel allows users to set the desired cooking temperature and time for precise control.



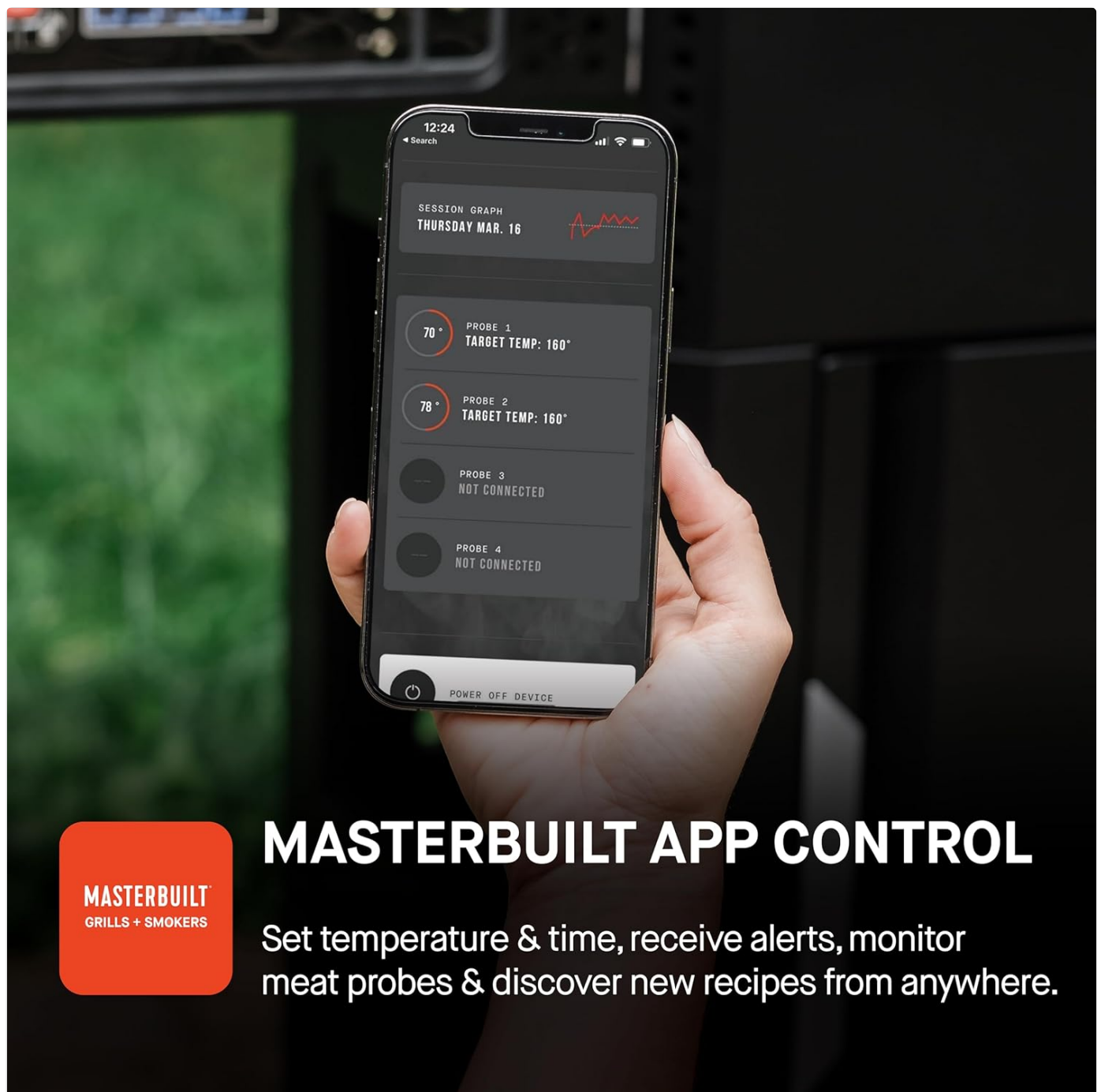
Figure 5: Charcoal MiniHopper™. This component holds charcoal for extended cooking sessions, reducing the need for frequent refills.

Masterbuilt App Control:

Enhance your grilling experience by connecting your grill to the Masterbuilt app.

1. **Download App:** Download the Masterbuilt app from your device's app store.
2. **Add Device:** Open the app and select "Add Device" from the home screen.
3. **Pairing:** Hold the "Connect" button on your grill's control board to initiate pairing.
4. **Name Device:** Name your grill within the app for easy identification.
5. **Connect to Wi-Fi:** Follow the in-app prompts to connect your grill to your home Wi-Fi network.

Once connected, you can set temperature and time, receive alerts, monitor meat probes, and discover new recipes directly from your smartphone.



MASTERBUILT™
GRILLS + SMOKERS

MASTERBUILT APP CONTROL

Set temperature & time, receive alerts, monitor meat probes & discover new recipes from anywhere.

Figure 6: Masterbuilt App Control. This image shows a smartphone displaying the Masterbuilt app, which allows remote monitoring and control of the grill.

Versatile Cooking:

The Autotignite 545 is designed for both low-and-slow smoking and high-heat searing, with a temperature range of 250°F to 650°F.

- **QuickSear™ Cast Iron Plate:** Use the integrated cast iron plate for searing or sautéing foods, adding a delicious crust.
- **Cast Iron Cooking Grates:** The durable cast iron grates are ideal for searing in food flavors.
- **Foldaway Warming Racks:** Utilize the warming racks to keep food warm during cooking or fold them away when not in use.



SMOKE + SEAR VERSATILITY

Reaches 250°F - 650°F for low-and-slow smoking or high heat searing.

Figure 7: Smoke + Sear Versatility. This image demonstrates the grill's capability for both smoking (ribs) and searing (skewers), alongside corn on the cob.



QUICKSEAR™ CAST IRON PLATE

Sear or sauté your favorite foods.

Figure 8: QuickSear™ Cast Iron Plate. This close-up shows the dedicated cast iron plate for searing or sautéing foods.



CAST IRON COOKING GRATES

For searing in delicious food flavors.

Figure 9: Cast Iron Cooking Grates. These grates are designed for optimal heat retention and searing performance.



Figure 10: Foldaway™ Warming Racks. These racks provide additional space to keep food warm and can be folded away when not needed.

MAINTENANCE AND CARE

Regular maintenance ensures the longevity and optimal performance of your Masterbuilt AutoIgnite 545.

- **Cleaning Grates:** After each use, allow the grates to cool slightly, then clean them with a grill brush. For stubborn residue, use warm soapy water.
- **Ash Removal:** Regularly empty the ash tray and MiniHopper™ to prevent buildup, which can affect airflow and performance. Ensure the grill is completely cool before handling ash.
- **Exterior Cleaning:** Wipe down the exterior surfaces with a damp cloth and mild detergent. Avoid abrasive cleaners.
- **Storage:** When not in use, store the grill in a dry, protected area. Consider using a Masterbuilt grill cover to protect it from the elements.



CLOSED BOTTOM STORAGE

Closed cart design for storage of tools and accessories.

Figure 11: Closed Bottom Storage. This compartment provides convenient storage for grilling tools and accessories, keeping them protected.



Figure 12: Folding Side Shelf. This shelf offers additional food preparation space and can be folded down for compact storage of the grill.

TROUBLESHOOTING

Problem	Possible Cause	Solution
Grill not powering on.	Not plugged in, power outlet issue, or power button not pressed.	Ensure the grill is securely plugged into a working, grounded outlet. Press the power button firmly.
QuickStart™ ignitor not lighting.	Firestarter not positioned correctly, ignitor malfunction, or no power to ignitor.	Verify the firestarter is correctly placed in the holder. Check power connection. Contact customer support if issue persists.
Temperature not reaching desired level.	Insufficient charcoal, ash buildup, or lid not properly closed.	Add more charcoal to the MiniHopper™. Clean out any ash buildup. Ensure the grill lid is fully closed.

Problem	Possible Cause	Solution
App not connecting to grill.	Wi-Fi connectivity issues, incorrect pairing, or app outdated.	Ensure your grill and smartphone are within Wi-Fi range. Re-attempt pairing process. Update the Masterbuilt app to the latest version.

SPECIFICATIONS


- **Brand:** Masterbuilt
- **Model Name:** AutoIgnite 545
- **Model Number:** MB20041124
- **Power Source:** Charcoal
- **Color:** Black
- **Outer Material:** Stainless Steel
- **Product Dimensions:** 24"D x 56.5"W x 43.8"H
- **Inner Material:** Stainless Steel
- **Fuel Type:** Charcoal
- **Item Weight:** 90.2 pounds
- **Country of Origin:** China
- **Temperature Range:** 250°F - 650°F
- **Cooking Area:** 545 square inches
- **Charcoal Capacity:** Up to 5 lbs lump charcoal or 7 lbs briquettes

WARRANTY AND SUPPORT

For warranty information, product registration, or technical support, please refer to the official Masterbuilt website or contact their customer service department. Keep your purchase receipt as proof of purchase for warranty claims.

Customer Support: For assistance, visit the [Masterbuilt Store on Amazon](#) or refer to the contact information provided in your product packaging.

Related Documents - MB20041124



[Masterbuilt Gravity Series Griddle™ Digital Charcoal Grill + Smoker Manual](#)

This manual provides essential assembly, operation, and safety instructions for the Masterbuilt Gravity Series Griddle™ (Model MB20042221), a digital charcoal grill and smoker designed for outdoor household use. Learn how to safely set up, use, and maintain your grill for optimal performance.



[Masterbuilt Autolignite Series 545 Digital Charcoal Grill Manual & Operating Guide](#)

Comprehensive assembly, operating, and troubleshooting guide for the Masterbuilt Autotignite Series 545 Digital Charcoal Grill. Learn how to set up, use, and maintain your grill safely and efficiently.



[Masterbuilt Gravity Series 1150 Digital Charcoal Grill and Smoker Manual](#)

Assembly, operation, and maintenance guide for the Masterbuilt Gravity Series 1150 Digital Charcoal Grill and Smoker. Learn how to safely set up, use, and care for your grill.



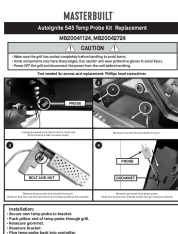
[Masterbuilt Gravity Series XT Digital Charcoal Grill and Smoker - Assembly & Operation Manual](#)

Get started with your Masterbuilt Gravity Series XT Digital Charcoal Grill and Smoker. This manual covers assembly, operation, safety, and troubleshooting for the MB20043024 model.



Masterbuilt CG600S Charcoal Wagon Assembly and Operating Manual

Comprehensive guide for assembling and operating the Masterbuilt CG600S Charcoal Wagon. Includes safety warnings, parts list, assembly instructions, quick start ignition system, cleaning and storage tips, and a grilling guide.



Masterbuilt Autolignite 545 Temp Probe Kit Replacement Guide

Step-by-step instructions for replacing the temperature probe kit on the Masterbuilt Autotignite 545 digital charcoal grill and smoker, including safety precautions and installation steps.