

Manuals+

[Q & A](#) | [Deep Search](#) | [Upload](#)

manuals.plus /

› [AODSK](#) /

› [AODSK AD-X1 Digital Piano and ALP-22 Adjustable Piano Bench User Manual](#)

AODSK AD-X1

AODSK AD-X1 Digital Piano and ALP-22 Adjustable Piano Bench User Manual

MODELS: AD-X1 (DIGITAL PIANO), ALP-22 (PIANO BENCH)

Introduction

This manual provides essential information for the proper setup, operation, and maintenance of your AODSK AD-X1 Digital Piano and ALP-22 Adjustable Piano Bench. Please read these instructions carefully before use to ensure optimal performance and longevity of your instruments.



Setup and Assembly

Carefully unpack all components and ensure all parts are present before beginning assembly. Refer to the included hardware package for specific fasteners.

1. Digital Piano Assembly (AD-X1)

1. Attach the four legs to the underside of the digital piano body using the provided screws. Ensure they are securely fastened.
2. Insert the music rest into the designated slot on the top panel of the digital piano.
3. Connect the sustain pedal or triple pedal unit to the appropriate port on the rear panel of the piano.



Figure 2: Digital Piano dimensions. Length: 53.15 inches, Depth: 12.2 inches, Height: 24.8 inches (without music rest).

2. Piano Bench Assembly (ALP-22)

1. Attach the four legs to the base of the piano bench using the provided hardware.
2. Ensure the height adjustment mechanism is properly aligned and functional.



Figure 3: Piano Bench dimensions. Length: 22.05 inches, Width: 13.39 inches. Adjustable height range: 18.31 to 22.05 inches.

Operating the Digital Piano (AD-X1)

1. Power On/Off

- Connect the power adapter to the DC IN port (3) on the rear panel and plug it into a standard electrical outlet.
- Press the **POWER** button on the control panel to turn the piano on or off.

2. Control Panel Functions

The control panel provides access to various features and settings:

88 standard keys range:A2-C5

Timbre: 128 timbres

Rhythm: 128 rhythms

Demo: 80 songs



Figure 4: Digital Piano control panel with buttons for DEMO, RHYTHM, VOLUME, TONE, RECORD, SPLIT, TOUCH, RE-PLAY, CHORD, SYNC, METRONOME, START/STOP, POWER, and DATA WHEEL.

- **DEMO:** Plays built-in demonstration songs (80 available).
- **RHYTHM:** Selects from 128 available rhythms.
- **VOLUME:** Adjusts the overall sound output level.
- **TONE:** Selects from 128 available instrument timbres.
- **RECORD:** Initiates recording of your performance.
- **SPLIT:** Divides the keyboard into two sections for different voices.
- **TOUCH:** Adjusts touch sensitivity of the keys.
- **RE-PLAY:** Plays back recorded performances.
- **CHORD:** Activates chord recognition mode.
- **SYNC:** Synchronizes rhythm playback.
- **METRONOME:** Activates the metronome function for practice.
- **START/STOP:** Starts or stops rhythm/demo playback.
- **DATA WHEEL:** Used to navigate menus and adjust values.

3. Headphone Mode

To practice privately, connect headphones to the Headphone Jack (1) on the rear panel. The internal speakers

will automatically mute.

HEADSET MODE

plugging in a headphone,you can immerse in the music world and practice the piano quietly without worrying about neighbor complaints at all.



Figure 5: Headphone jack for private practice.

4. Connectivity

The rear panel offers various connection options:

CONNECTIVITY

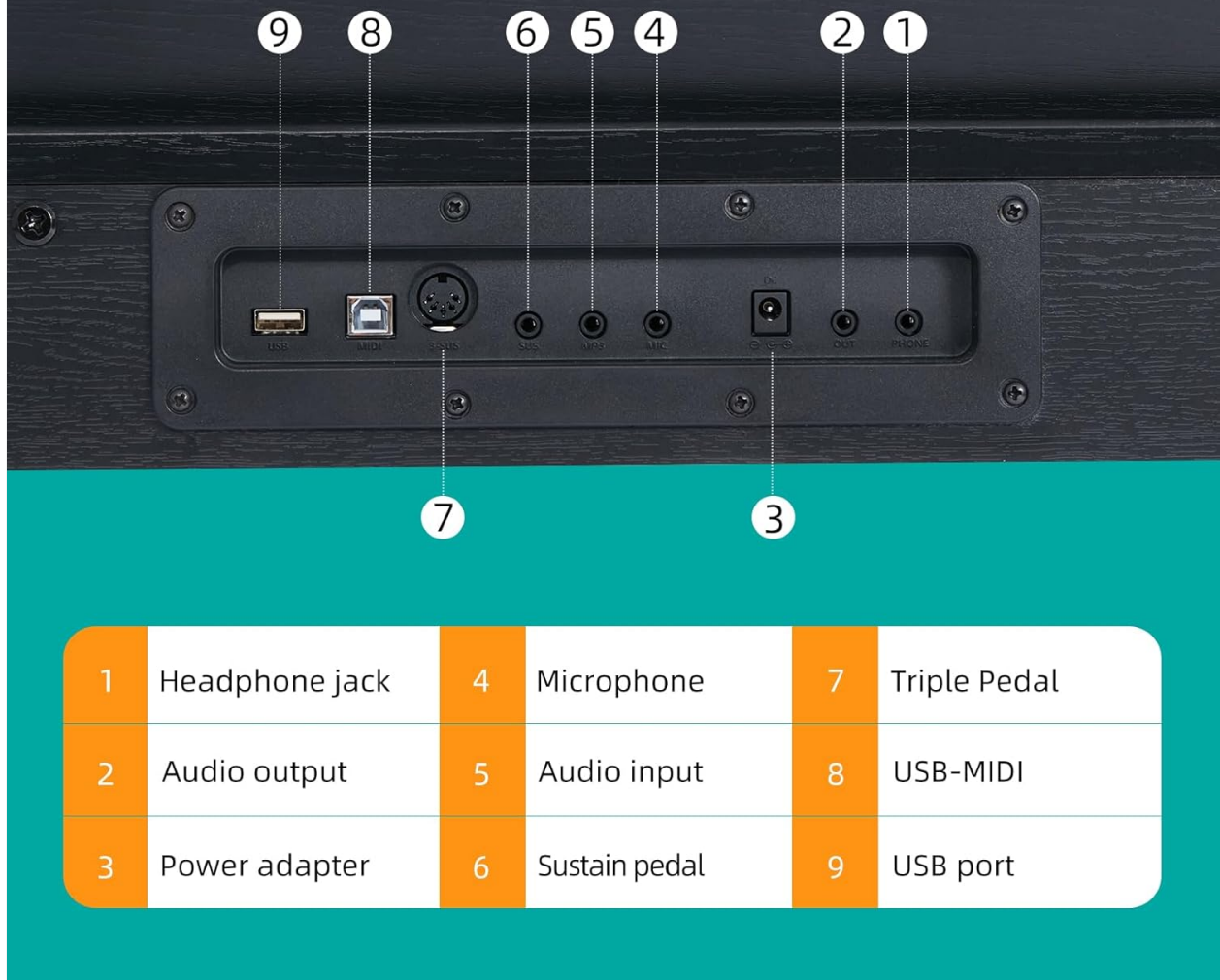


Figure 6: Connectivity panel with labeled ports.

- **1. Headphone Jack:** For connecting headphones (3.5mm).
- **2. Audio Output:** For connecting to external amplification systems or recording devices.
- **3. Power Adapter:** DC IN port for the power supply.
- **4. Microphone:** Input for a microphone.
- **5. Audio Input:** For connecting external audio sources.
- **6. Sustain Pedal:** Input for a single sustain pedal.
- **7. Triple Pedal:** Input for the included triple pedal unit.
- **8. USB-MIDI:** For connecting to a computer or MIDI devices.
- **9. USB Port:** For connecting USB storage devices or other peripherals.

Operating the Piano Bench (ALP-22)

1. Height Adjustment

The ALP-22 piano bench features an adjustable height mechanism. Locate the knob on the side of the bench. Rotate the knob to raise or lower the seat to your desired height. The adjustable range is from 18.31 inches to 22.05 inches.

Adjustable piano bench height

You can easily adjust height from 18.31" to 22.05" with the beside knob.

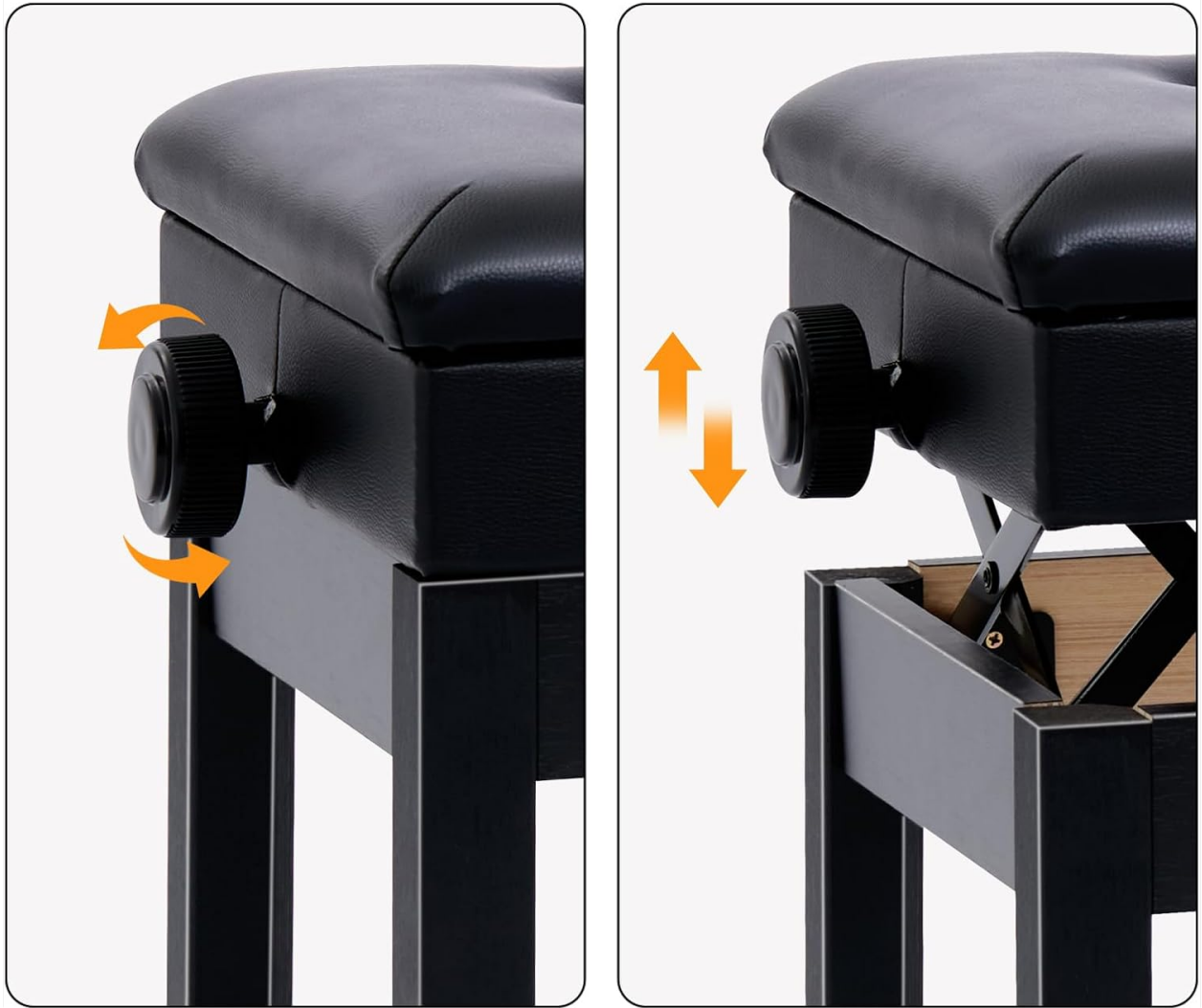


Figure 7: Adjusting the piano bench height using the side knob.

2. Storage Compartment

The padded seat of the ALP-22 bench can be lifted to reveal a storage compartment. This space is suitable for storing sheet music, books, and small accessories.

LARGE STORAGE

Convenient for you to store various music books



Figure 8: Storage compartment beneath the piano bench seat.

Maintenance

1. Cleaning

- Wipe the surfaces of the digital piano and bench with a soft, dry cloth.
- For stubborn dirt, slightly dampen the cloth with water and a mild, non-abrasive cleaner. Avoid harsh chemicals or solvents.
- Do not allow liquids to enter the piano's internal components.

2. Storage

- Store the instruments in a dry environment, away from direct sunlight and extreme temperature fluctuations.
- Avoid placing heavy objects on the piano or bench.

Troubleshooting

- **No Sound:**

- Ensure the power adapter is securely connected and the piano is turned on.
 - Check the volume level.
 - If headphones are plugged in, unplug them to enable speaker output.
 - Verify external audio connections if using an amplifier.
- **Keys Not Responding:**
 - Restart the piano.
 - Ensure no foreign objects are lodged between the keys.
 - **Pedal Not Functioning:**
 - Check that the pedal cable is securely connected to the correct port on the piano's rear panel.

Specifications

AODSK AD-X1 Digital Piano

Feature	Specification
Model Name	AD-X1
Number of Keys	88 Standard Keys (A2-C5 range)
Max Polyphony	128
Timbres	128
Rhythms	128
Demo Songs	80
Connectivity	3.5mm Headphone Jack, Audio Output, Microphone Input, Audio Input, Sustain Pedal Input, Triple Pedal Input, USB-MIDI, USB Port
Power Source	Corded Electric
Finish Type	Matte
Skill Level	Beginner

AODSK ALP-22 Adjustable Piano Bench

Feature	Specification
Model Name	ALP-22
Adjustable Height Range	18.31" - 22.05"
Seat Material	Padded, High-elastic sponge
Storage	Integrated compartment under seat

Warranty and Support

For warranty information or technical support, please refer to the documentation included with your purchase or contact AODSK customer service directly. Keep your purchase receipt as proof of purchase.