

Vestel 20244363

Vestel Smart Sleep Light 2 User Manual

Model: Akıllı Uyku Işığı 2 (20244363)

INTRODUCTION

Thank you for choosing the Vestel Smart Sleep Light 2. This device is designed to enhance your sleep and waking experience with features such as gradual lighting, a Bluetooth speaker, 16 million color options, a sleep aid function, and a clock display. Please read this manual carefully before use to ensure proper operation and to maximize the product's lifespan.

SAFETY INFORMATION

- Keep the device away from water and high humidity environments.
- Do not expose the device to direct sunlight or extreme temperatures.
- Avoid dropping or subjecting the device to strong impacts.
- Do not attempt to disassemble or repair the device yourself. Contact authorized service personnel.
- Use only the provided charging cable.
- Keep out of reach of children.

PACKAGE CONTENTS

Please check the package for the following items:

- Vestel Smart Sleep Light 2
- Charging Cable
- User Manual (this document)

PRODUCT OVERVIEW

The Vestel Smart Sleep Light 2 combines multiple functions into a compact and stylish design. Key features include:

- **Gradual Lighting:** Smooth transitions for waking up or falling asleep.
- **Bluetooth Speaker:** Play audio from your connected devices.
- **16 Million Color Options:** Customize your ambiance.
- **Sleep Aid Function:** Gentle light and sound to help you relax.
- **Clock Display:** Integrated digital clock.
- **Rechargeable Battery:** Portable and convenient use.
- **App Control:** Manage settings and features via a dedicated mobile application.



Image: The Vestel Smart Sleep Light 2 illuminating a bedroom with a soft purple glow.

SETUP

1. Charging the Device

Before first use, fully charge the Vestel Smart Sleep Light 2 using the provided charging cable. Connect the cable to the charging port on the device and a suitable USB power adapter (not included). The charging indicator will show the charging status.

2. Initial Placement

Place the device on a stable, flat surface such as a nightstand or desk. Ensure it is within reach for easy interaction and has clear line of sight for optimal Bluetooth connectivity.



Image: A hand interacting with the top surface of the Smart Sleep Light 2, indicating touch control.

OPERATING INSTRUCTIONS

1. Power On/Off

Press and hold the power button (location specified in product diagram, usually on the base or side) for a few seconds to turn the device on or off. The clock display will illuminate upon power-on.

2. Light Control (Brightness and Color)

- **Manual Control:** Tap the top surface of the light to cycle through brightness levels or change colors. Refer to the product's specific touch zones for detailed control.
- **App Control:** For full control over 16 million colors and precise brightness adjustments, use the Vestel Smart Health application.

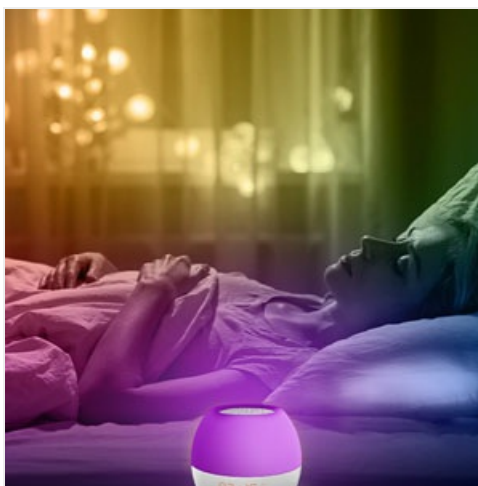


Image: The Smart Sleep Light 2 showcasing its ability to display a wide range of colors, enhancing the bedroom ambiance.

3. Bluetooth Speaker

1. Ensure the Smart Sleep Light 2 is powered on.
2. Activate Bluetooth on your smartphone or other audio device.
3. Search for "Vestel Smart Sleep Light 2" in your device's Bluetooth settings and pair.
4. Once connected, you can play audio through the integrated speaker.



Image: The Smart Sleep Light 2 indicating active wireless communication, such as Bluetooth connectivity.

4. Clock Display

The digital clock display shows the current time. Time settings and alarm functions are managed through the Vestel Smart Health application.

5. Sleep Aid Function

Utilize the Vestel Smart Health app to set up the sleep aid function. This feature can gradually dim the light and play soothing sounds to help you fall asleep. Similarly, it can simulate a sunrise to gently wake you up.

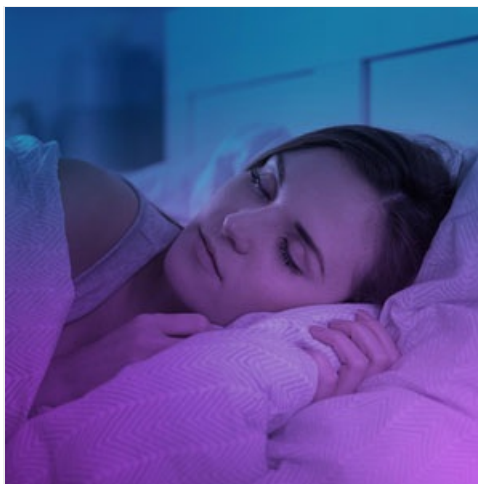


Image: A person sleeping, benefiting from the calming purple light emitted by the Smart Sleep Light 2.



Image: A person gently waking up and stretching, suggesting the sunrise simulation feature of the device.

6. App Control (Vestel Smart Health)

Download the "Vestel Smart Health" application from the App Store or Google Play to unlock the full potential of your Smart Sleep Light 2. The app allows you to:

- Set alarms and customize wake-up routines.
- Adjust light colors and brightness with precision.
- Manage sleep aid sounds and durations.
- Update device firmware.

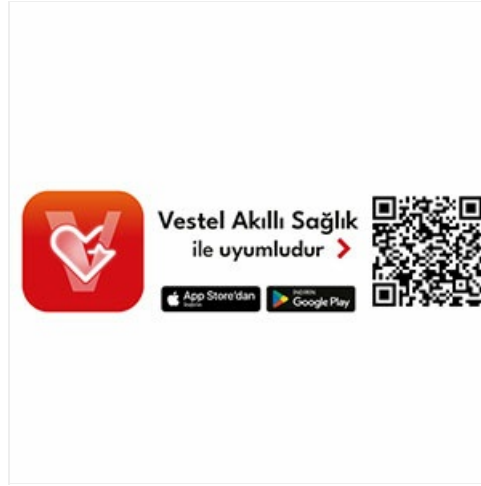


Image: QR code and app store links for downloading the Vestel Smart Health application.
Scan the QR code or visit [Vestel Smart Health App](#) to download.

MAINTENANCE

- **Cleaning:** Wipe the device with a soft, dry cloth. Do not use abrasive cleaners or solvents.
- **Storage:** When not in use for extended periods, store the device in a cool, dry place.
- **Battery Care:** To prolong battery life, avoid fully discharging the device frequently. Charge it regularly.

TROUBLESHOOTING

| Problem | Possible Cause | Solution |
|-----------------------------------|---|---|
| Device does not turn on. | Low battery or no charge. | Charge the device using the provided cable. |
| Bluetooth connection fails. | Device not in pairing mode, or too far from audio source. | Ensure device is on and in pairing mode. Move closer to the audio source. Restart both devices. |
| Light not responding to touch. | Temporary software glitch. | Restart the device. Ensure your fingers are clean and dry. |
| App cannot connect to the device. | Bluetooth off, app outdated, or device not paired. | Ensure Bluetooth is enabled on your phone. Update the app. Re-pair the device via the app. |

SPECIFICATIONS

| | |
|--------------------------------|--------------------------------|
| Model Name: | Akıllı Uyku Işığı 2 |
| Product Model Number: | 20244363 |
| Dimensions (D x W x H): | 12D x 12W x 11H cm |
| Control Method: | Application (App) |
| Wireless Communication: | Bluetooth |
| Power Source: | Battery Powered (Rechargeable) |
| Color: | White |
| Included Components: | Charging Cable, User Manual |

WARRANTY AND SUPPORT

For warranty information and customer support, please refer to the warranty card included with your product or visit the official Vestel website. You can also contact Vestel customer service for assistance with product inquiries, technical support, or service requests.

Manufacturer: Vestel