

Manuals+

[Q & A](#) | [Deep Search](#) | [Upload](#)

manuals.plus /

> [FURIDEN](#) /

> [FURIDEN Flat Iron Hair Straightener and Curler 2 in 1 \(Model LM-1666\) User Manual](#)

FURIDEN LM-1666

FURIDEN Flat Iron Hair Straightener and Curler 2 in 1 User Manual

Model: LM-1666

INTRODUCTION

Thank you for choosing the FURIDEN Flat Iron Hair Straightener and Curler 2 in 1. This versatile styling tool is designed to help you achieve both sleek straight hair and beautiful curls with ease. Its advanced features ensure efficient and safe styling for various hair types. Please read this manual thoroughly before use to ensure proper operation and maintenance.



The FURIDEN Flat Iron offers dual functionality for both straightening and curling hair.

IMPORTANT SAFETY INFORMATION

WARNING: To reduce the risk of burns, electrocution, fire, or injury to persons:

- Surfaces get extremely hot during use. Avoid direct contact with skin.
- Keep away from water. Do not use near bathtubs, sinks, or other water sources.
- Unplug the appliance when not in use. Do not leave unattended when plugged in.
- Keep out of reach of children.
- Do not use if the cord or plug is damaged.
- Do not attempt to repair the appliance yourself. Contact qualified service personnel.

PRODUCT OVERVIEW

The FURIDEN Flat Iron (Model LM-1666) features curved, elongated aluminum plates with MCH heating technology for fast and even heat distribution. It includes a dual-chip temperature control system and global dual voltage compatibility (100V-240V).

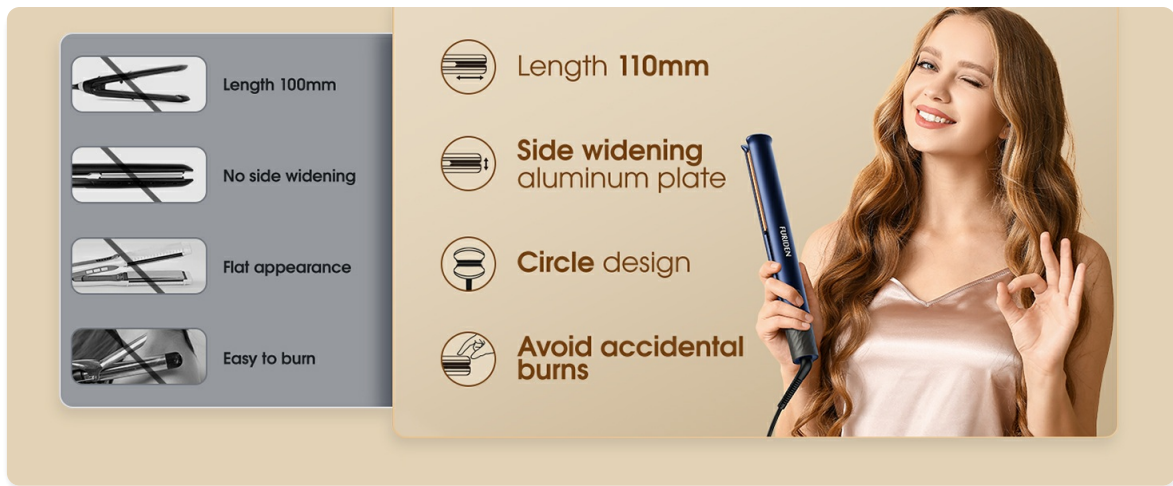


The FURIDEN Flat Iron Hair Straightener and Curler 2 in 1 in blue.

FURIDEN
Rounded edges
design.

The meticulously crafted edges, curl, flip, and add volume minus the brutal indentations common in traditional flat irons. Enjoy a snag free styling experience.

Comparison highlighting the extended plate length of the FURIDEN tool for improved efficiency.



Key design features including 110mm plate length, side widening, circular design, and burn prevention.

SETUP

1. Ensure your hair is clean, dry, and detangled before styling.
2. Plug the appliance into a suitable electrical outlet. The appliance features global dual voltage (100V-240V) and adapts automatically.
3. Turn on the device and adjust the temperature using the control dial. The MCH heating element allows for rapid heating, reaching desired temperature in approximately 15 seconds.
4. Allow the plates to reach the selected temperature before use.

Visual Setup Guide

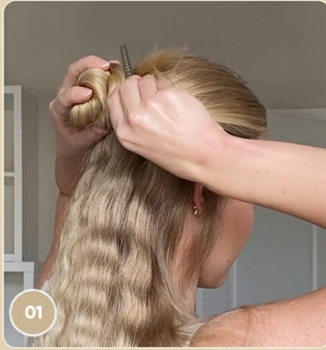
Your browser does not support the video tag.

Video demonstrating the unboxing and initial power-on of the FURIDEN Flat Iron, showing its design and temperature display.

OPERATING INSTRUCTIONS

Straightening Hair

1. Section your hair into manageable strands, approximately 1-2 inches wide.
2. Place a section of hair between the heating plates, close to the roots.
3. Gently clamp the plates and glide the straightener slowly and steadily down the hair strand to the ends. Avoid stopping in one place to prevent heat damage.
4. Repeat for all sections until desired straightness is achieved.



01

▲ Preliminary

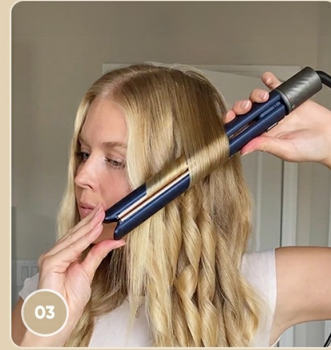
Keep the hair sectioned and secured in place.



02

▲ Twist

Open the plates, gently wrap your hair around the iron.



03

▲ Slide

Apply gentle pressure to clamp the hair, slowly work your way down the section of hair.

Achieve smooth, snag-free straightening with a single pass.



Visual comparison of hair before and after straightening with the FURIDEN tool.

Curling Hair

1. Section your hair into manageable strands. For best results, use a sectioning clip to hold unused hair.
2. Open the plates gently and wrap a section of hair around the iron, starting from the root or mid-shaft.
3. Apply gentle pressure to clamp the hair and slowly work your way down the section of hair, twisting the iron as you go.
4. Release the hair and allow the curl to cool before touching or styling.



Achieve defined curls in a single pass due to the wider plate design.

Tailored for Thick Hair.

More hair in a single pass
Successful realization of **one pass**



The rounded edges and floating plates ensure a crease and snag-free curling experience.

Step-by-step guide for curling hair: preliminary sectioning, twisting hair, and sliding the iron.

Video Tutorial for Curling

Your browser does not support the video tag.

Official FURIDEN video tutorial demonstrating how to use a sectioning clip and the flat iron to create curls and waves effectively.

MAINTENANCE AND CARE

To ensure the longevity and optimal performance of your FURIDEN Flat Iron, follow these care instructions:

- Always unplug the appliance and allow it to cool completely before cleaning.
- Wipe the plates and exterior with a soft, damp cloth. Do not use abrasive cleaners or harsh chemicals.
- Ensure no moisture enters the appliance.
- Store the appliance in a dry, safe place, away from moisture and extreme temperatures.
- Do not wrap the power cord around the appliance, as this can damage the cord.

TROUBLESHOOTING

Problem	Possible Cause	Solution
Appliance does not heat up.	Not plugged in correctly, power outlet issue, or internal fault.	Check power connection. Try a different outlet. If problem persists, contact customer support.

Problem	Possible Cause	Solution
Poor styling results (e.g., hair not straight/curled).	Incorrect temperature setting, hair not fully dry, or too much hair per section.	Increase temperature if suitable for your hair type. Ensure hair is completely dry. Work with smaller sections of hair.
Hair snagging or pulling.	Hair not detangled, or plates not closing properly.	Ensure hair is thoroughly detangled. Check for any debris on the plates.

SPECIFICATIONS

- **Model Number:** LM-1666
- **Product Dimensions:** 11.79 x 1.39 x 1.39 inches
- **Weight:** 1.63 Pounds
- **Material:** Aluminum plates
- **Color:** Blue
- **Voltage:** Global Dual Voltage (100V-240V)
- **Heating Technology:** MCH heating for fast, even heat.
- **Features:** 2-in-1 Straightener and Curler, Curved Extended Aluminum Plates, Dual-chip Temperature Control, Overheat Protection.

WARRANTY AND SUPPORT

The FURIDEN Flat Iron is constructed with robust materials to ensure lasting durability. For any product inquiries, technical support, or warranty claims, please contact FURIDEN customer service through the retailer where the product was purchased or visit the official FURIDEN website for contact information.

Please retain your proof of purchase for warranty purposes.