

BoxWave AccuPoint Active Stylus

BoxWave AccuPoint Active Stylus Pen User Manual for Doogee T20

Model: AccuPoint Active Stylus

1. INTRODUCTION

The BoxWave AccuPoint Active Stylus is designed to provide a precise and natural writing and drawing experience on your Doogee T20 device. This manual provides instructions for setup, operation, maintenance, and troubleshooting to ensure optimal performance and longevity of your stylus.



The BoxWave AccuPoint Active Stylus Pen, presented alongside a compatible Doogee T20 tablet, showcasing the product and its intended use.

2. PRODUCT OVERVIEW

The AccuPoint Active Stylus features an ultra-fine tip for accuracy and a durable aluminum construction. It operates without Bluetooth pairing, using electronic pulses to interact with your screen.

Key Features:

- **Ultra Fine Tip:** A 2mm tip designed for precise interaction with your device's screen.
- **No Pairing Required:** Simply power on the stylus and begin use; no Bluetooth connection is necessary.
- **Long Battery Life:** Provides up to 12 hours of continuous use on a single charge.
- **Durable Construction:** Built with a solid brushed aluminum barrel for strength and stability.

- **Rechargeable:** Includes a MicroUSB cable for convenient charging from any standard USB power source.



Active Stylus

Electronic signals interact flawlessly with your screen



Precise Tip

1.9mm for accuracy and precision



FiberMesh Tip

Superior screen response



Rechargeable

Built-in charging port

BoxWave AccuPoint Active Stylus

A visual breakdown of the stylus's core features, including its electronic signal interaction, 1.9mm precise tip, optional FiberMesh tip, and built-in charging port.

3. SETUP

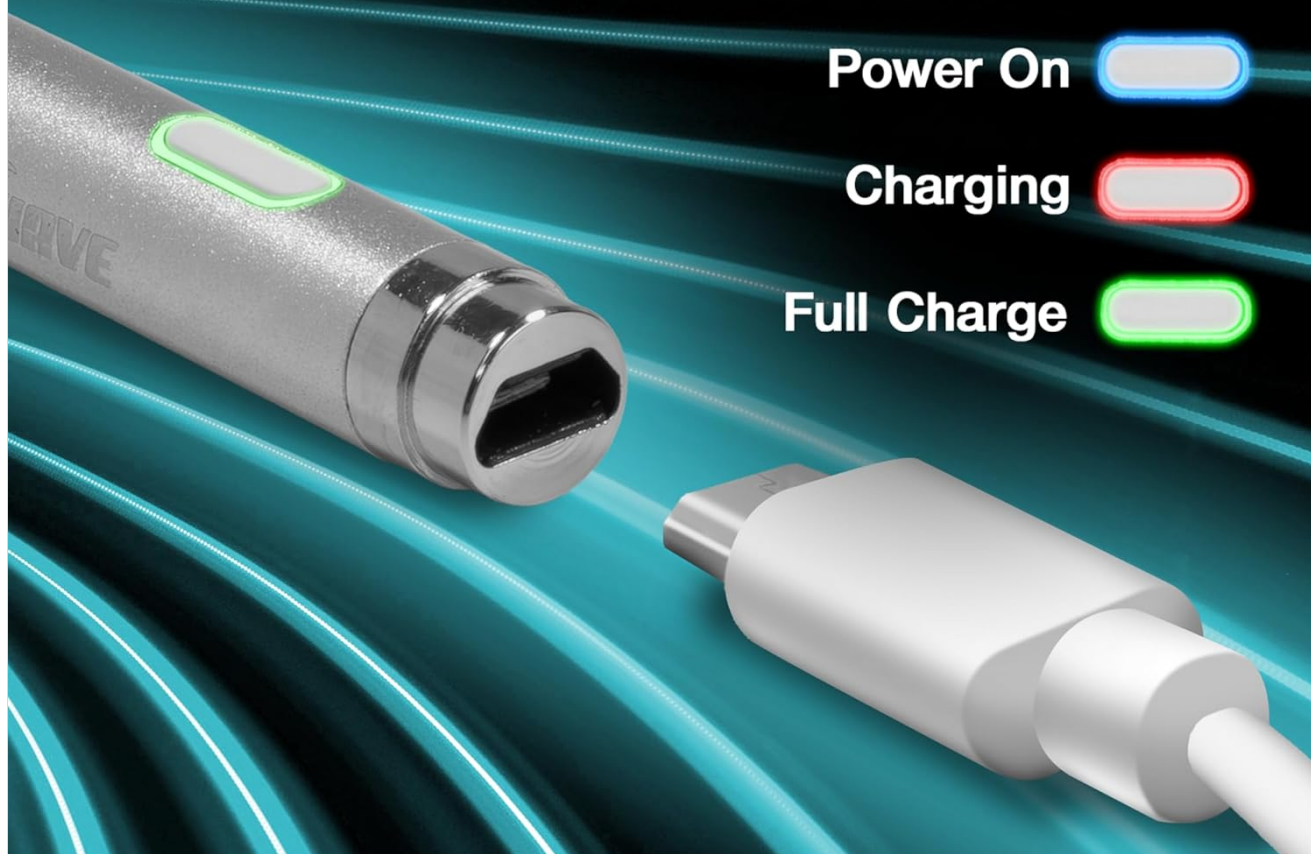
3.1. Charging the Stylus

Your AccuPoint Active Stylus comes with a built-in rechargeable battery. Before first use, or when the indicator light shows low power, charge the stylus using the provided MicroUSB cable.

1. Locate the MicroUSB charging port on the stylus.
2. Connect the MicroUSB cable to the stylus and the other end to any standard USB power source (e.g., computer, wall adapter).
3. The indicator light will illuminate red during charging and turn green when fully charged.
4. A full charge provides approximately 12 hours of use.



Fast Charging



This image demonstrates the charging process of the stylus, highlighting the MicroUSB port and the color-coded indicator lights for charging (red) and fully charged (green) status.

3.2. Powering On/Off

To turn on the stylus, simply press the power button located on the barrel. The indicator light will turn blue. To turn off, press the power button again.

4. OPERATING INSTRUCTIONS

The AccuPoint Active Stylus does not require Bluetooth pairing with your Doogee T20. It operates by emitting electronic pulses that interact with your device's capacitive touchscreen.

1. **Power On:** Press the power button on the stylus. The indicator light will turn blue, indicating it is ready for use.
2. **Usage:** Hold the stylus like a regular pen and use it to tap, swipe, draw, or write on your Doogee T20 screen.
3. **Natural Writing Position:** The stylus allows for a natural writing position, enhancing comfort during extended use.
4. **Power Off:** When finished, press the power button again to turn off the stylus and conserve battery life.

Please note: The AccuPoint Active Stylus does not support Palm Rejection or Pressure Sensitivity.



An illustration of the stylus in active use, showing a user navigating and selecting applications on a tablet, emphasizing the natural and precise interaction.

5. MAINTENANCE

To ensure the longevity and optimal performance of your AccuPoint Active Stylus, follow these maintenance guidelines:

- **Cleaning:** Wipe the stylus body with a soft, dry, lint-free cloth. Do not use harsh chemicals, solvents, or abrasive materials, as these can damage the finish.
- **Tip Care:** Avoid applying excessive force to the stylus tip. If the FiberMesh tip (if applicable) becomes worn or damaged, it may be replaceable. Consult BoxWave support for replacement options.
- **Storage:** Store the stylus in a cool, dry place away from direct sunlight, extreme temperatures, and high humidity.
- **Charging:** Do not leave the stylus charging for extended periods beyond a full charge. Disconnect the charging cable once the indicator light turns green.

6. TROUBLESHOOTING

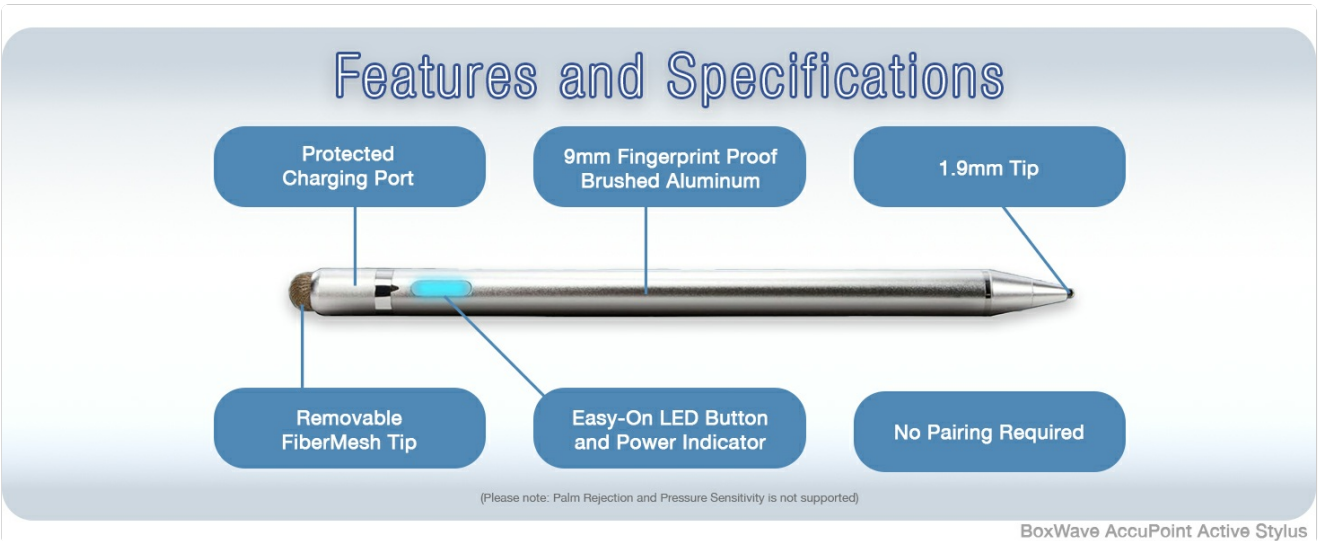
If you encounter issues with your AccuPoint Active Stylus, refer to the following common problems and their solutions:

Problem	Possible Cause	Solution
Stylus does not turn on.	Battery is depleted.	Charge the stylus using the provided MicroUSB cable until the indicator light turns green.
Stylus does not respond on screen.	Stylus is off or battery is low.	Ensure the stylus is powered on (blue indicator light). If not, charge it. Ensure your device screen is clean.
Inaccurate or inconsistent response.	Screen protector interference or worn tip.	Ensure your screen is clean. If using a thick screen protector, it might affect performance. Consider replacing the stylus tip if it appears worn.
Stylus turns off unexpectedly.	Low battery.	Recharge the stylus fully.

7. SPECIFICATIONS

The following are the technical specifications for the BoxWave AccuPoint Active Stylus:

- **Model:** AccuPoint Active Stylus
- **Tip Size:** 2mm (Ultra Fine Tip)
- **Material:** Brushed Aluminum Barrel
- **Battery Life:** Approximately 12 hours (continuous use)
- **Charging Port:** MicroUSB
- **Weight:** 1.3 ounces (approximate)
- **Compatibility:** Doogee T20 and other compatible capacitive touchscreens.



A comprehensive diagram detailing the physical attributes and technical specifications of the stylus, including its 9mm brushed aluminum body, 1.9mm tip, removable FiberMesh tip, protected charging port, and LED power indicator.

8. WARRANTY & SUPPORT

8.1. Warranty Information

BoxWave products are designed for quality and reliability. For information regarding product warranty, please refer to the documentation included with your purchase or visit the official BoxWave website for the most current warranty terms and conditions.

8.2. Technical Support

For technical assistance or inquiries regarding your AccuPoint Active Stylus, you may contact BoxWave Corporation directly. Limited third-party technical support for your device (up to 3 inquiries via messaging) may be available, as noted in the product description. Please refer to your purchase details or the BoxWave website for specific contact information.

Manufacturer: BoxWave

Seller: BoxWave Corporation




Amazon Seller ID: A30XRGG45X0IFD

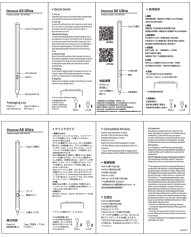
9. PRODUCT VIDEOS

No official product videos were provided in the available data for this item.

© 2023 BoxWave Corporation. All rights reserved.

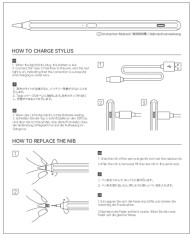
Related Documents - AccuPoint Active Stylus

	<p>Penyeah Stylus Pen User Manual - DIY Combinations and Usage Guide</p> <p>Comprehensive user manual for the Penyeah P1 stylus pen, detailing DIY combinations of tips, usage instructions, and replacement procedures. Learn how to maximize your stylus experience for various devices and applications.</p>
	<p>DOUXE S3 Active Stylus Pen Instruction Manual</p> <p>Comprehensive instruction manual for the DOUXE S3 Active Stylus Pen, detailing features, technical specifications, operating instructions, safety warnings, and warranty information for touchscreen device users.</p>
	<p>Sony DPTA-RS1 Stylus Pen User Guide for Digital Paper DPT-RP1</p> <p>User guide for the Sony DPTA-RS1 stylus pen, designed for the Digital Paper DPT-RP1. Learn about supplied items, replacing the stylus tip, charging the stylus, specifications, precautions, and FCC compliance.</p>



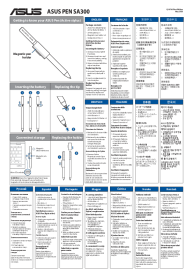
[Penoval AX Ultra Stylus Pen User Manual and Guide](#)

Comprehensive guide for the Penoval AX Ultra stylus pen, including quick start, features, compatible devices, packaging, and FCC compliance information.



[Active Stylus 2S Instruction Manual and Specifications](#)

Comprehensive guide for the Active Stylus 2S, detailing charging instructions, nib replacement, product specifications, compatibility, and LED notifications.



[ASUS Pen SA300 Quick Start Guide](#)

This guide provides instructions on how to use and maintain the ASUS Pen SA300 Active Stylus, including package contents, inserting and replacing the battery, and replacing the pen tip and holder.