

[Manuals.plus](#) /

> [VEVOR](#) /

> VEVOR Bathroom Exhaust Fan, 8 LED Colors, 110 CFM Efficiency Ventilation, 1.5sones Low Noise All-Copper Motor, Remote Control, Energy-Saving Bathroom Ceiling Fan, Attic Access Needed

## VEVOR BT-BPT280AS

# VEVOR Bathroom Exhaust Fan User Manual

Model: BT-BPT280AS

### PRODUCT OVERVIEW

---

The VEVOR Bathroom Exhaust Fan is designed to provide efficient ventilation and lighting for your bathroom. Featuring an all-copper motor for low noise operation and 8 customizable LED colors, it enhances both functionality and ambiance. This energy-saving unit offers 110 CFM airflow, humidity control, and timer shutdown options, all controllable via a remote.



Figure 1: VEVOR Bathroom Exhaust Fan Unit

## SAFETY INFORMATION

---

Please read all instructions carefully before installation and use. Failure to follow these instructions may result in electric shock, fire, or serious injury.

- Always disconnect power at the circuit breaker before servicing or installing the fan.
- All wiring must comply with local and national electrical codes. If you are unsure about wiring, consult a qualified electrician.
- Do not install this fan in a ceiling with insulation that exceeds R-50.
- Ensure the fan is properly grounded.
- Do not use this fan in areas where it may be exposed to water spray from a shower or bathtub.
- Keep all foreign objects away from the fan blades during operation.
- This product is designed for indoor use only.

## PACKAGE CONTENTS

---

Verify that all components are present and undamaged before beginning installation.

- VEVOR Bathroom Exhaust Fan Unit (Model: BT-BPT280AS)

- Remote Control
- Mounting Hardware (screws, wall anchors)
- User Manual



Figure 2: Included Components and Specifications

## INSTALLATION

This section provides step-by-step instructions for installing the VEVOR Bathroom Exhaust Fan. Ensure power is disconnected before starting.

1. **Prepare Opening:** Create a ceiling opening of approximately 7.68 inches x 7.6 inches.
2. **Secure Fan Unit:** Insert the fan unit into the prepared opening. Secure the exhaust fan to a beam or wall pillar using appropriate screws.

3. **Connect Wiring:** Connect the fan's wiring to your household electrical wiring. Match the corresponding wire colors (e.g., fan's white wire to house's white wire, black to black, green to ground). Ensure all connections are secure with wire nuts.
4. **Install Exhaust Duct:** Attach a 4-inch exhaust duct to the fan's exhaust port. Secure it with tape or clamps to ensure an airtight seal. (Exhaust duct not included).
5. **Attach Light Panel:** Connect the lighting wire from the fan unit to the light panel. Carefully snap the light panel onto the fan unit, ensuring it is securely fastened.
6. **Remote Control Pairing:** After turning on the power to the fan, within 5 seconds, press and hold the "Match Code" button on the remote control until you hear a "Didi" sound. This indicates successful pairing.

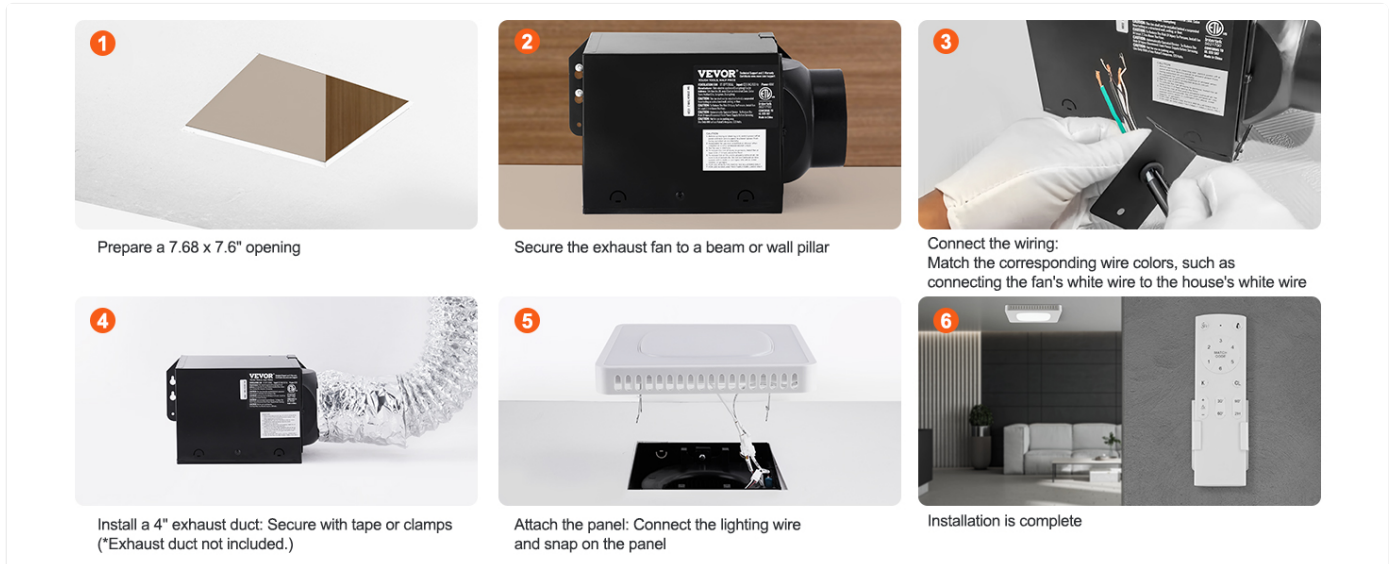


Figure 3: Installation Steps Overview

## OPERATION

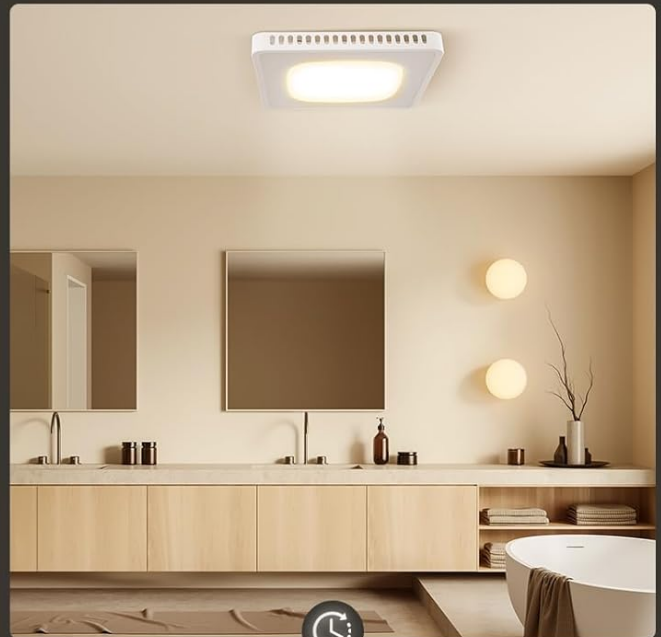
The VEVOR Bathroom Exhaust Fan is operated using the provided remote control. The fan and light can be controlled independently.

### Remote Control Functions:

- **Power Button:** Turns the fan and/or light on/off.
- **Fan Speed Control:** Adjusts the fan speed (multiple levels available).
- **Light On/Off:** Toggles the main light.
- **Color Change Button:** Cycles through 8 customizable LED colors.
- **Color Temperature Adjustment:** Changes the main light's color temperature (3000K, 4000K, 5000K).
- **Timer Settings:** Sets the fan to operate for a specified duration (30, 60, 90, 120 minutes).
- **Humidity Control:** Activates smart mode for humidity-based auto airflow. The fan will adjust its operation based on detected humidity levels (e.g., MAX 110 CFM for humidity  $\geq 70\%$ , MIN 80 CFM for humidity  $< 70\%$ ).

# USER-FRIENDLY OPERATION DESIGN

## Humidity Control, Timer Shutdown



Dehumidification & Defogging

≥70%<

MIN 80 CFM



**Humidity ≥70%**

MAX 110 CFM for  
Dehumidification and Defogging

**Humidity <70%**

MIN 80 CFM



30'

60'

90'

2H

**Timer Options**

30 min, 60 min, 90 min, 120 min

Fan and light can be controlled separately

Figure 4: Remote Control and Operation Features

# PERSONALIZED BATHROOM AMBIANCE

8 Customizable  
LED Colors



Figure 5: Customizable LED Colors

## MAINTENANCE

---

Regular maintenance ensures optimal performance and longevity of your exhaust fan. Always disconnect power before performing any maintenance.

- **Cleaning the Grille:** Periodically remove the light panel/grille and wipe it with a soft, damp cloth. Do not use abrasive cleaners.
- **Cleaning the Fan Blades:** If accessible, gently wipe the fan blades with a damp cloth to remove dust and debris.
- **Ductwork Inspection:** Annually inspect the ductwork for any blockages, leaks, or damage. Ensure proper airflow.

## TROUBLESHOOTING

---

If you encounter issues with your VEVOR Bathroom Exhaust Fan, refer to the following common problems and solutions:

Problem	Possible Cause	Solution
Fan does not operate.	No power supply; Loose wiring; Remote control not paired.	Check circuit breaker; Verify all electrical connections are secure; Re-pair remote control (refer to Installation section).
Fan is noisy.	Loose mounting; Obstruction in ductwork or fan blades; Damaged motor.	Ensure fan is securely mounted; Check and clear any obstructions; Contact customer support if motor is damaged.
Light does not turn on or change colors.	Loose light panel connection; Remote control battery low; LED module malfunction.	Check light panel connection; Replace remote control battery; Contact customer support.
Poor ventilation.	Blocked ductwork; Incorrect duct size; Fan unit not properly sealed.	Inspect and clear ductwork; Ensure 4-inch duct is used; Verify fan unit is securely sealed to the ceiling opening.

## SPECIFICATIONS

Detailed technical specifications for the VEVOR Bathroom Exhaust Fan.

Feature	Specification
Model Number	BT-BPT280AS
Rated Power	40W
Airflow Capacity	110 CFM
Noise Level	≤33dB (1.5 Sones)
Color Temperature	3000K / 4000K / 5000K
Luminous Flux	900 Lumens
Control Modes	Humidity Control, Timer Control
Primary Material	Galvanized Steel / Alloy Steel
Item Dimensions (L x W x H)	11.4 x 6.7 x 10 inches (290 x 255 x 170 mm)
Item Weight	6.39 lbs (2.42 kg)
Voltage	120 Volts (AC)
Efficiency	Energy Star Certified

## WARRANTY AND SUPPORT

For warranty information, technical support, or replacement parts, please contact VEVOR customer service. Keep your purchase receipt and model number handy for faster service.

Visit the official VEVOR website for the most up-to-date support information:[www.vevor.com](http://www.vevor.com)

