

## NETVUE Hum Duo AI

# NETVUE Birdfy Hum Duo AI Hummingbird Feeder User Manual

Model: Hum Duo AI

## 1. INTRODUCTION

This manual provides detailed instructions for the setup, operation, and maintenance of your NETVUE Birdfy Hum Duo AI Hummingbird Feeder. This device features dual 2K HD cameras for multi-angle bird watching, automatic capture, and smart notifications, enhancing your hummingbird observation experience.

## 2. SAFETY INFORMATION

Please read and understand all safety instructions before using the product. Failure to follow these instructions may result in injury or damage to the product.

- Avoid using harmful food types in the feeder. Only use appropriate hummingbird nectar.
- Secure the feeder properly to prevent access by larger animals or accidental dislodgement.
- Place the feeder in a safe location, away from potential hazards or areas where it could fall.
- Ensure the feeder is installed in a stable position to prevent excessive movement, which could trigger false motion alerts or drain the battery.

## 3. PACKAGE CONTENTS

Verify that all components are present in the package:

- NETVUE Birdfy Hum Duo AI Hummingbird Feeder (with integrated dual cameras)
- USB Type-C Charging Cable
- S-hook for hanging
- Bottle brush for cleaning
- Small brush for cleaning feeder ports
- Ejector pin for camera reset
- User Manual (this document)



Image: NETVUE Birdfy Hum Duo AI Hummingbird Feeder. This image displays the complete feeder unit, including the nectar reservoir, red base with feeding ports, and the integrated dual cameras. A smartphone screen next to it shows a live view of a hummingbird at the feeder.

## 4. SETUP

---

### 4.1 Nectar Preparation

Prepare hummingbird nectar using a simple 4:1 ratio of water to sugar. Do not use artificial sweeteners or honey.

1. Boil 1 cup of water.

2. Remove from heat and stir in 1/4 cup of granulated sugar until fully dissolved.
3. Allow the solution to cool completely before filling the feeder.

## 4.2 Filling the Feeder



Image: Refilling Nectar Easily. This image illustrates the three steps for refilling the feeder: turning and pulling up the reservoir, removing the plug to fill with nectar, and then plugging and turning to secure it back in place.

1. Gently turn the nectar reservoir right and pull it up to detach it from the base.
2. Remove the plug from the bottom of the reservoir.
3. Pour the cooled nectar into the reservoir.
4. Replace the plug securely and reattach the reservoir to the base by turning it left until it locks.

## 4.3 Charging the Device

The feeder has a built-in rechargeable battery. Before initial use, fully charge the device using the provided USB Type-C cable.

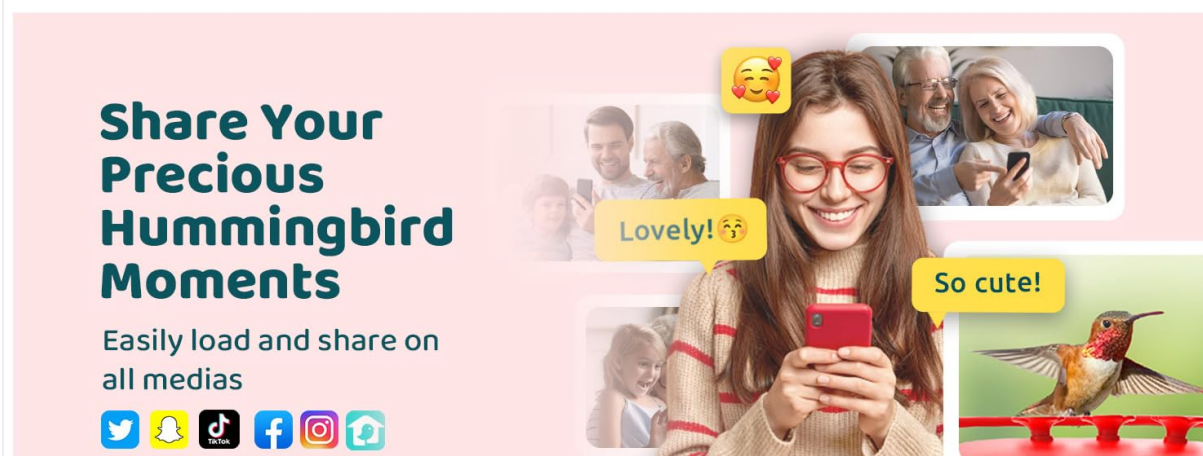


Image: Built-in Rechargeable Battery and Easy Configuration. This image shows the USB-C charging port on the feeder unit and a smartphone displaying a QR code for easy 2.4G Wi-Fi configuration.

- Locate the USB-C charging port on the feeder unit.
- Connect the USB-C cable to the feeder and a compatible USB power adapter (not included).
- A full charge typically takes several hours. The device's indicator light will change to show charging status.

## 4.4 App Installation and Wi-Fi Connection

Download the Birdfy app to your smartphone and connect the feeder to your home Wi-Fi network (2.4GHz only).

1. Scan the QR code provided in the manual or on the product packaging, or search for "Birdfy" in your app store to download the application.
2. Create an account or log in.
3. Follow the in-app instructions to add your new device. This typically involves scanning a QR code displayed by the app with the feeder's camera.
4. Ensure your Wi-Fi network is 2.4GHz, as 5GHz networks are not supported.

## 4.5 Mounting the Feeder

The feeder can be installed on a pole, post, or wall. Use the provided S-hook for hanging.

- Choose a location that offers a clear view for the cameras and is easily accessible for refilling and cleaning.
- Ensure the mounting point is stable and can support the weight of the feeder when full.
- Hang the feeder using the S-hook. For optimal camera performance, consider a location with minimal wind movement.

## 5. OPERATING INSTRUCTIONS

---

### 5.1 Dual Camera System

The feeder is equipped with two 2K HD cameras, providing both front and side views of visiting hummingbirds.

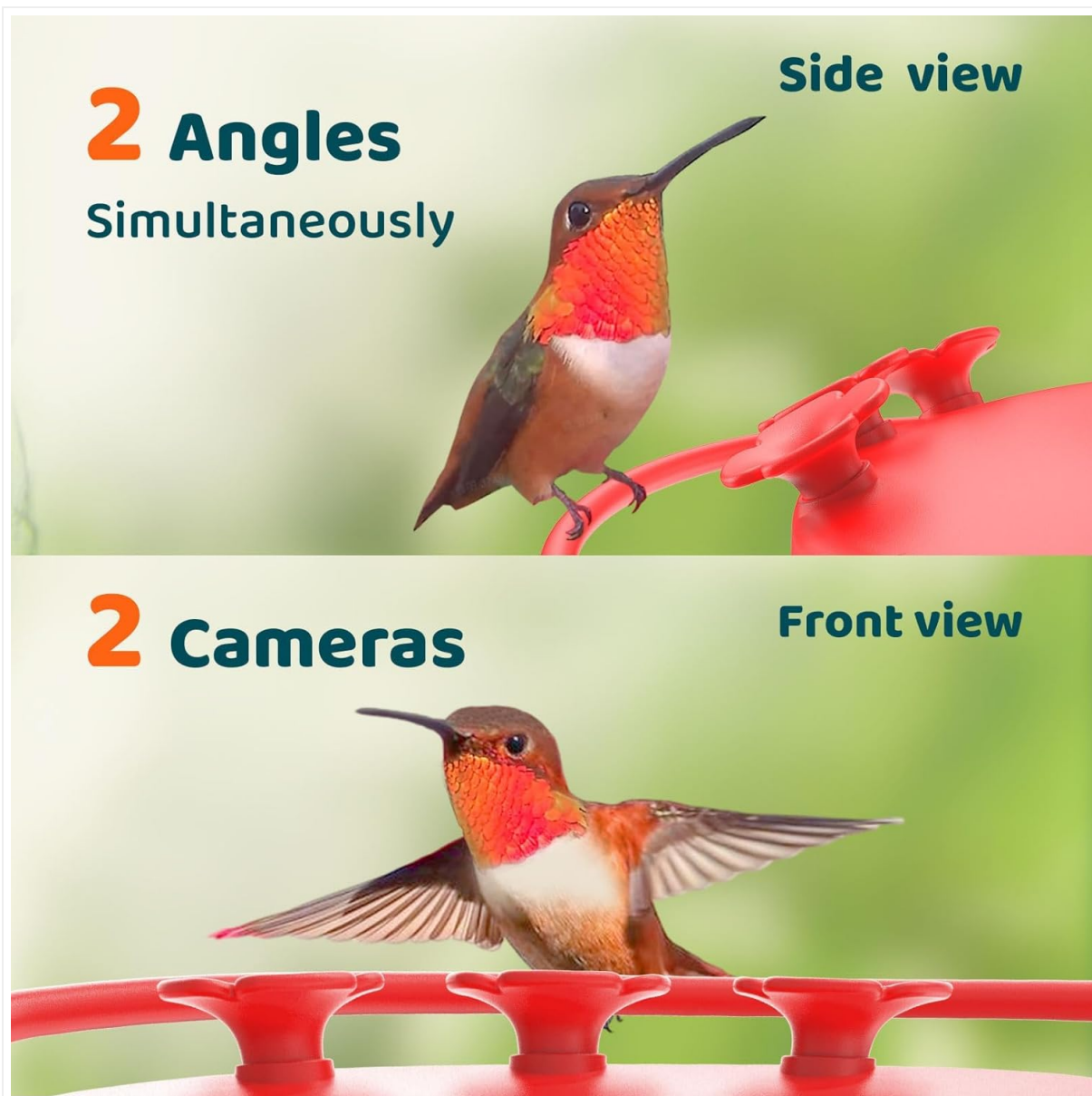




Image: Two Angles Simultaneously, Two Cameras. This image shows two distinct views of a hummingbird: a side view and a front view, demonstrating the capability of the dual camera system.



Image: Graceful Side Posture and Adjustable Viewing. This image highlights the adjustable side camera, indicating it can be set to a 30-degree angle for perfect viewing of hummingbirds.

- The cameras capture high-definition images and videos, allowing for detailed observation of hummingbirds.
- The side camera can be adjusted to optimize the viewing angle.

## 5.2 Automatic Capture and Notifications

The feeder utilizes motion detection technology to automatically record hummingbird visits and send instant alerts.

# Never Miss a Bird Visit

## 90+ videos per day



### Bird Detection

Just Now

Rufous Hummingbird detected by Birdfy Hum Feeder at 10:15am.

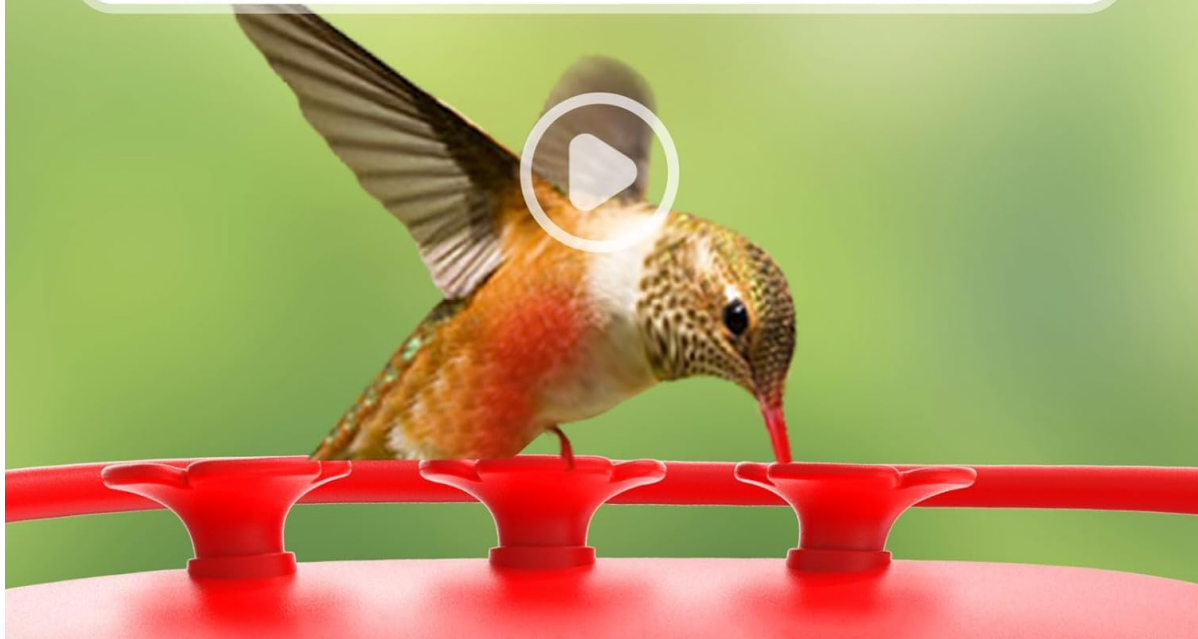


Image: Bird Detection Notification. This image shows a smartphone screen displaying a notification: "Bird Detection - Rufous Hummingbird detected by Birdfy Hum Feeder at 10:15am." A hummingbird is visible at the feeder in the background.

- When a hummingbird is detected, the cameras automatically capture a 20-second video clip.
- An instant notification is sent to your smartphone via the Birdfy app.

### 5.3 Birdfy App Features

The Birdfy app provides advanced features for managing your feeder and observing birds.

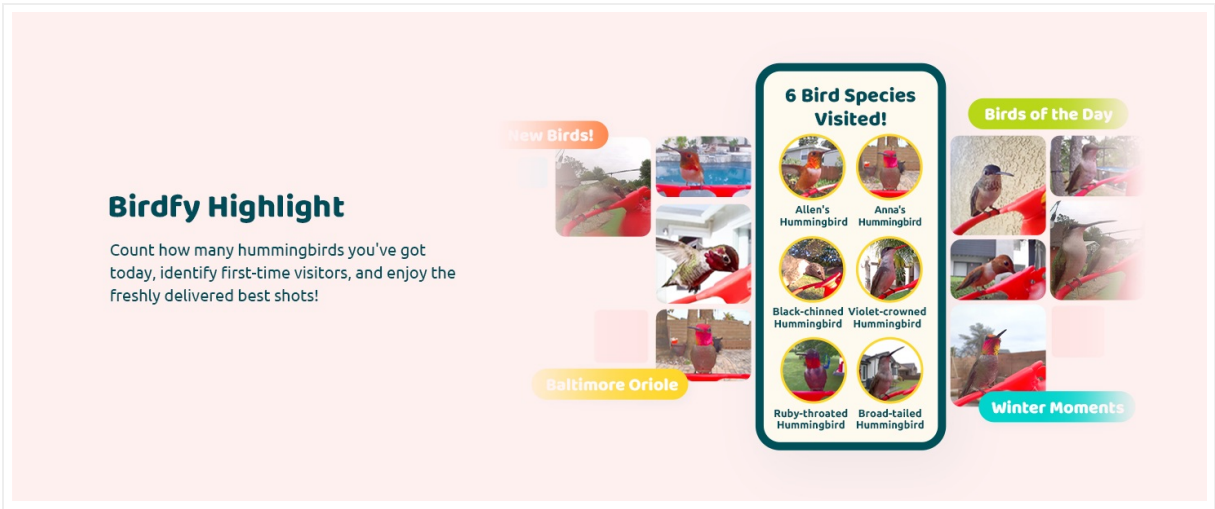


Image: Lifetime Free AI. This image shows a hummingbird at the feeder with a yellow box highlighting it, indicating the AI identification feature. Text states "Lifetime Free AI, NO need any subscription."

- **AI Identification:** The app identifies hummingbird species using artificial intelligence.
- **Daily Highlights:** Receive a daily summary of bird visits, including "Birds of the Day" and "Top Moments."
- **Monthly Recap:** Get a summary of your monthly birding activity, including visitor counts and rare species.
- **Cloud Storage:** Enjoy 30 days of free cloud storage for recorded videos, accessible anytime.
- **Device Sharing:** Share access to your feeder with up to 20 other users.

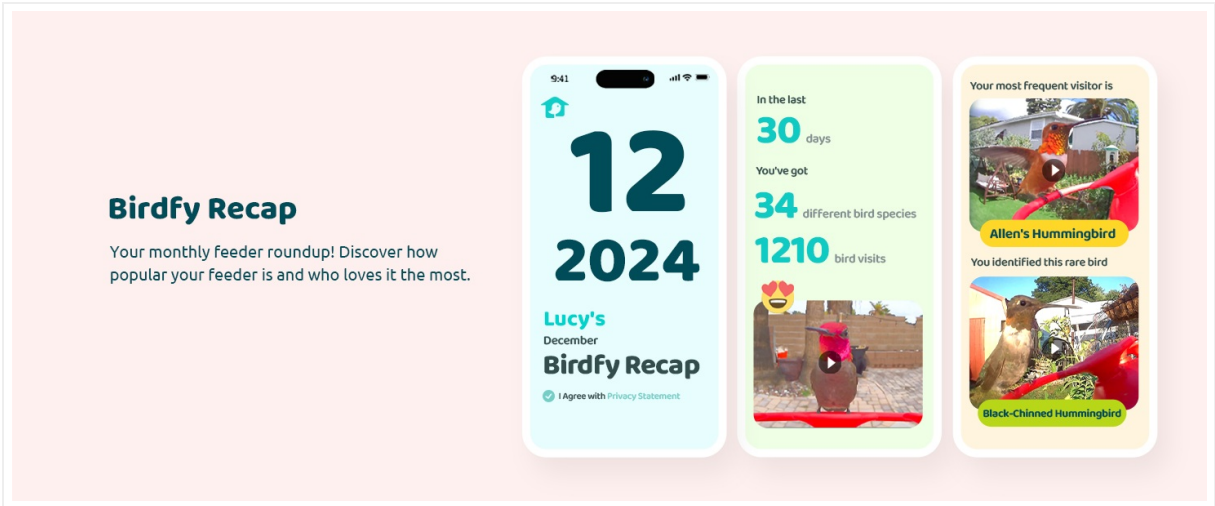


Image: Birdfy Highlight. This image displays a smartphone screen showing the Birdfy Highlight feature, which counts hummingbird visits, identifies first-time visitors, and presents daily best shots of various hummingbird species.

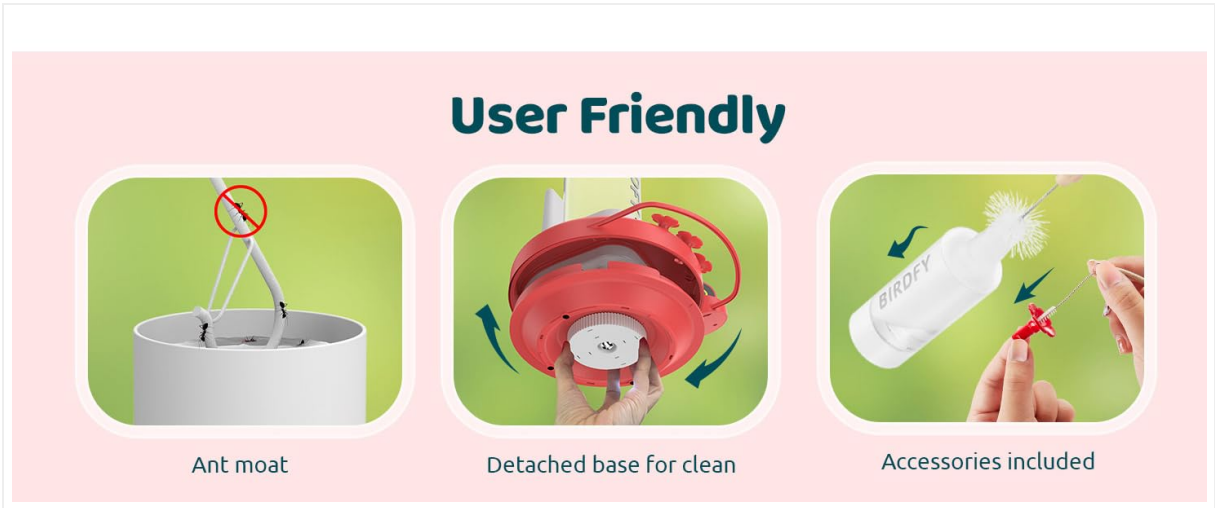


Image: Birdfy Recap. This image shows smartphone screens illustrating the Birdfy Recap feature, which summarizes

monthly birding activity, including the number of bird visitors and identified species.

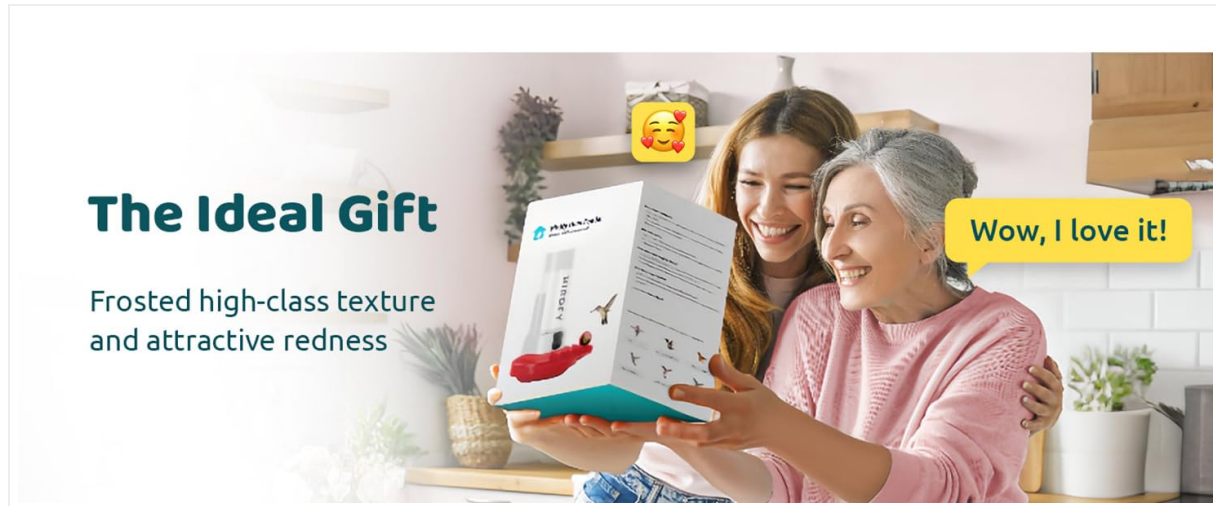


Image: Free Cloud Storage. This image depicts a filmstrip of hummingbird videos and a smartphone screen, indicating 30 days of free cloud storage for video retention, allowing playback anytime, anywhere.

## 6. MAINTENANCE

---

### 6.1 Cleaning the Feeder

Regular cleaning is essential to prevent mold and bacteria growth, ensuring the health of visiting hummingbirds.



## User Friendly



Detached base for clean



Accessories included



Ant moat

Image: User Friendly Features. This image shows the detachable base for easy cleaning, the integrated ant moat, and the included cleaning accessories (bottle brush and small port brush).

- The feeder features a detachable rotating base for easy disassembly and cleaning.
- Use the provided bottle brush to clean the nectar reservoir.
- Use the small brush to clean the feeding ports.
- Rinse all parts thoroughly with warm water. Avoid using soap or detergents, as residues can be harmful to hummingbirds.

### 6.2 Nectar Replacement

Nectar should be replaced frequently to maintain freshness and prevent spoilage.

- Replace nectar every 2-3 days, especially in warm weather.
- Clean the feeder thoroughly each time you replace the nectar.

### 6.3 Ant Moat

The feeder includes a built-in ant moat to deter ants from reaching the nectar.

- Fill the ant moat with water from the top.
- Regularly check and refill the ant moat to ensure it remains effective.

## 7. TROUBLESHOOTING

This section addresses common issues you might encounter with your Birdfy Hum Duo AI Feeder.

Problem	Possible Cause	Solution
Feeder not connecting to Wi-Fi	Incorrect Wi-Fi band (5GHz), weak signal, incorrect password.	Ensure you are connecting to a 2.4GHz Wi-Fi network. Verify Wi-Fi password. Move feeder closer to router or use a Wi-Fi extender. Try resetting the camera with the ejector pin and re-pairing.
Battery drains quickly	Frequent motion detection (e.g., wind, large animals), high usage, cold weather.	Adjust motion detection sensitivity in the app. Ensure feeder is mounted stably to minimize false triggers. Consider purchasing a compatible solar panel (sold separately) for continuous charging.
No bird detections or notifications	Motion detection off, low battery, poor Wi-Fi connection, feeder placement.	Check app settings to ensure motion detection is enabled. Charge the battery. Verify Wi-Fi signal strength. Ensure feeder is placed in an area frequented by hummingbirds.
Nectar attracting ants	Ant moat is dry or not properly filled.	Ensure the ant moat is filled with water and regularly checked.

## 8. SPECIFICATIONS

Detailed technical specifications for the NETVUE Birdfy Hum Duo AI Hummingbird Feeder.

- **Brand:** NETVUE
- **Model:** Hum Duo AI (Item model number: hum duo cam Lite)
- **Target Species:** Hummingbird
- **Material:** BPA-free, anti-UV, corrosion-resistant material
- **Special Features:** Built-In Ant Moat, Dual Smart Cams
- **Mounting Type:** Pole, Post, or Wall
- **Product Dimensions:** 8.03"L x 7.64"W x 11.18"H
- **Power Source:** Battery Powered (rechargeable)
- **Included Components:** Feeder, Manual, USB Type-C Cable, Cleaning Brushes, S-hook, Ejector Pin
- **Nectar Capacity:** 20 Fluid Ounces
- **Color:** Red
- **Item Weight:** 2.79 pounds
- **Connectivity:** 2.4GHz Wi-Fi only




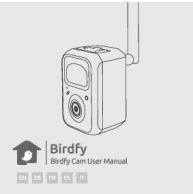


Image: BPA Free & Anti-UV. This image highlights the use of BPA-free and anti-UV materials, emphasizing their safety for hummingbirds.

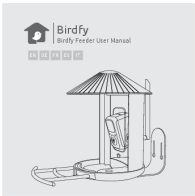
## 9. SUPPORT

For further assistance, technical support, or warranty inquiries, please contact NETVUE customer service.

- Refer to the contact information provided on the product packaging or the official NETVUE website.
- When contacting support, please have your product model (Hum Duo AI) and purchase information ready.

### Related Documents - Hum Duo AI

	<p><a href="#">Birdfy Hum Feeder User Manual - Setup, Features, and FAQs</a></p> <p>Comprehensive user manual for the Birdfy Hum Feeder, covering setup, charging, features like AI bird identification, and frequently asked questions. Learn how to install and use your smart bird feeder.</p>
	<p><a href="#">Birdfy Hum Feeder User Manual - Setup, Features, and FAQs</a></p> <p>Comprehensive user manual for the Birdfy Hum Feeder, covering setup, charging, operation, AI bird identification, troubleshooting, and contact information. Learn how to use your Birdfy Hum Feeder effectively.</p>
	<p><a href="#">Birdfy Cam User Manual: Setup, Features, and Specifications</a></p> <p>Comprehensive user manual for the Birdfy Cam, covering setup, microSD card insertion, charging, power functions, pre-installation notes, and AI bird recognition. Includes FCC and CE compliance information.</p>
	<p><a href="#">Birdfy Hum Feeder User Manual</a></p> <p>User manual for the Birdfy Hum Feeder, covering setup, charging, operation, and FAQs. Includes information on AI bird identification and contact details for support.</p>
	<p><a href="#">Birdfy Hum Feeder User Manual: Setup, Features, and Support</a></p> <p>Comprehensive user manual for the Birdfy Hum Feeder, detailing setup, charging, app integration, cleaning, troubleshooting, and support. Learn how to use the smart bird feeder with its integrated camera and AI bird identification features.</p>



### [Birdfy Feeder User Manual](#)

User manual for the Birdfy Feeder, providing instructions on setup, charging, operation, and features like AI Bird Identification. Includes safety warnings and manufacturer information.