

## WONLINK WL-AP7202-USHS1-YAM

# WONLINK AC1200 Outdoor Gigabit Wireless Access Point

Model: WL-AP7202-USHS1-YAM

## INTRODUCTION

The WONLINK AC1200 Outdoor Gigabit Wireless Access Point is designed to extend and enhance your Wi-Fi network outdoors. It supports dual-band operation (2.4GHz and 5GHz) and multiple operating modes, making it suitable for various outdoor networking needs. Its robust, weatherproof design ensures reliable performance in diverse environmental conditions.

## PACKAGE CONTENTS

Verify that all items listed below are present in your package:

- 1 x Outdoor WiFi Extender
- 1 x 48V PoE Adapter
- 2 x Stainless Ties
- 2 x Screws
- 2 x Silicone Seals

## KEY FEATURES

- **1200Mbps Outdoor WiFi Extender:** Compliant with IEEE 802.11 ac/a/b/g/n network standards, offering speeds up to 867Mbps on 5GHz and 300Mbps on 2.4GHz. Ideal for HD streaming and online gaming.
- **Flexible Installation & Gigabit Ports:** Integrated Power over Ethernet (PoE) support allows installation in locations without direct power outlets. Features dual Gigabit (1000Mbps) LAN/WAN Ethernet ports for high-speed network connections.
- **Multiple Operation Modes:** Supports Repeater, AP (Access Point), Router, and Bridge modes to accommodate various network environments and applications.
- **Advanced WiFi Security Protocol:** Incorporates 128-bit encryption and WPA/WPA2/WPA-PSK/WPA2-PSK protocols to secure your network and prevent unauthorized access.
- **Outdoor Weatherproof and Moisture-proof Design:** IP66 certified weatherproof and heat-resistant shell with a waterproof silicone ring ensures continuous operation in harsh outdoor conditions, including extreme cold, heat, or humidity (-10°C to 60°C).



Figure 1: Front view of the WONLINK AC1200 Outdoor Gigabit Wireless Access Point, showing its two antennas and signal indicators.



Figure 2: High-speed AC1200 Dual Band Outdoor Access Point capabilities, highlighting 867Mbps on 5.8G and 300Mbps on 2.4G.

## SETUP INSTRUCTIONS

### Power over Ethernet (PoE) Connection

The device supports Power over Ethernet (PoE), allowing both power and data transmission over a single Ethernet cable. This simplifies installation, especially in outdoor environments where power outlets may not be readily available.



Figure 3: Illustration of the Power Over Ethernet (PoE) setup, demonstrating how the 48V PoE adapter connects to the device via an Ethernet cable, supporting distances up to 100 meters.

## Initial Setup via PC

Follow these steps for initial configuration using a computer:

1. Connect to the device's default Wi-Fi network, typically named "WONLINK-XXXX-2G" or "WONLINK-XXXX-5G", using your computer.
2. Open a web browser and enter the default IP address "192.168.10.1" in the address bar.
3. Enter the default username "admin" and password "admin" to log in.
4. Select the desired operating mode (e.g., AP Mode) and set a new IP address. The new IP address must be on the same subnet as your router, but the last digit must be different.
5. Enter your desired Wi-Fi password. It is recommended to use a strong password different from your router's password.
6. Click "Finish" to apply the configuration. Once successful, you can enjoy your Wi-Fi network.

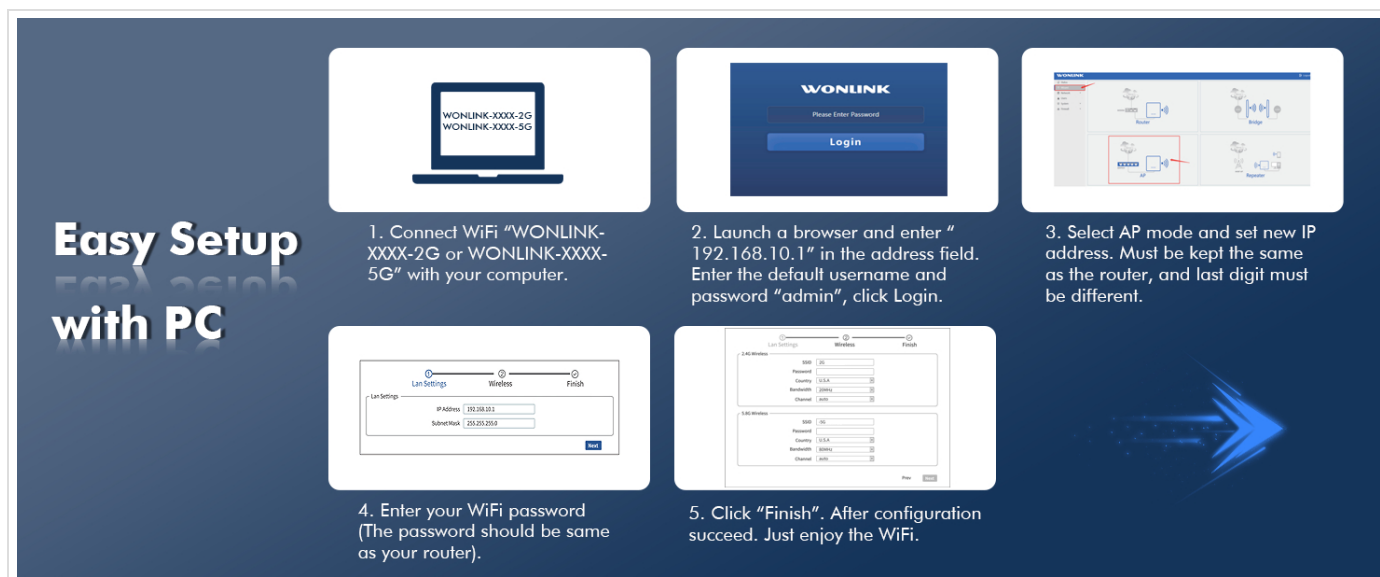


Figure 4: Visual guide for the PC-based setup process.

## OPERATING MODES

The WONLINK AC1200 supports multiple operating modes to suit various network configurations:

- **AP Mode (Access Point):** Converts a wired network connection into a wireless one, allowing multiple devices to connect wirelessly.
- **Repeater Mode:** Extends the coverage of an existing Wi-Fi network by receiving the wireless signal and re-transmitting it.
- **Router Mode:** Functions as a primary router, connecting to a modem and providing network access to connected devices.
- **Bridge Mode:** Connects two separate networks, often used to link wired networks wirelessly.



## Multiple Working Modes

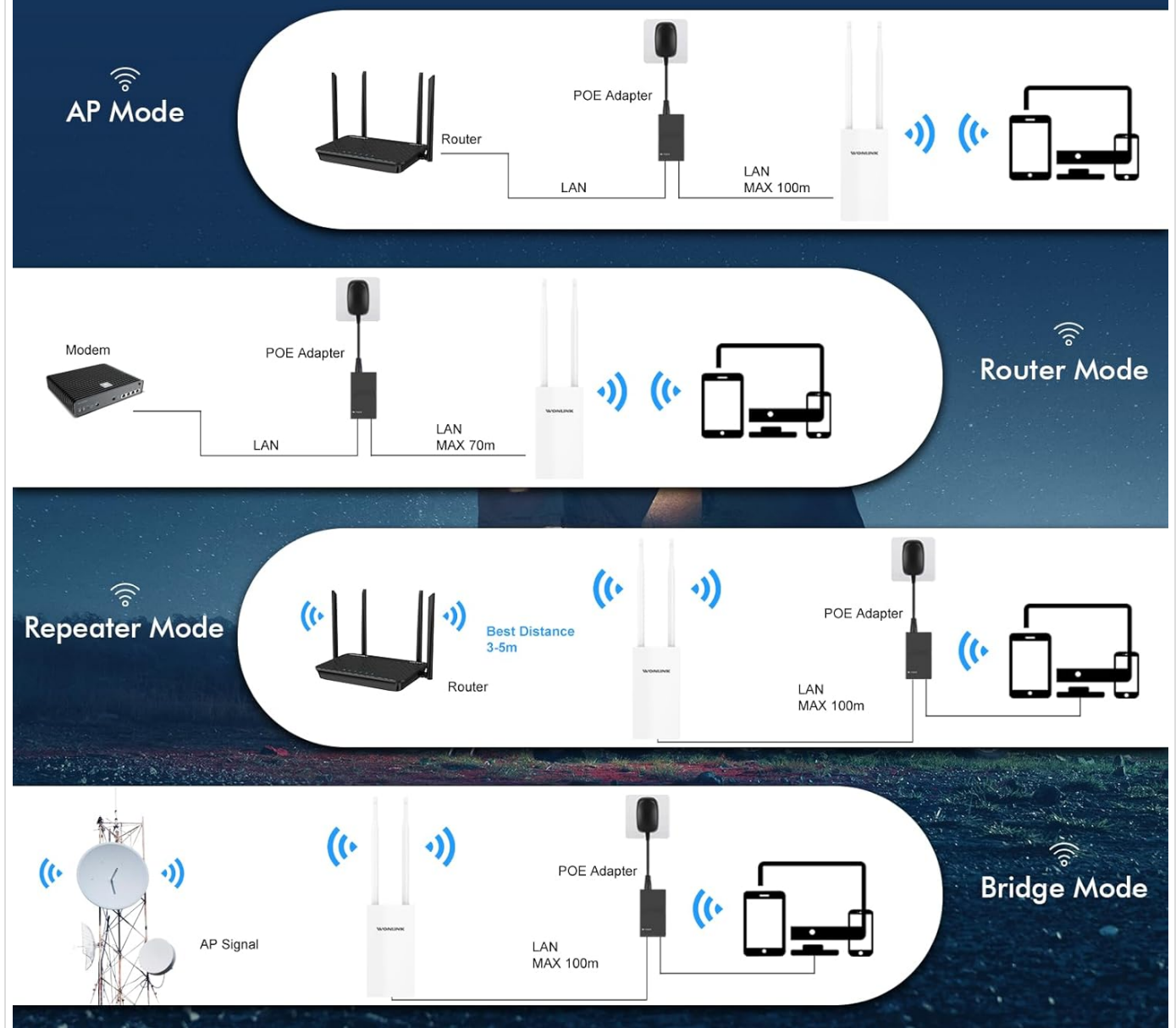


Figure 5: Overview of the multiple working modes supported by the device.

## MAINTENANCE

To ensure optimal performance and longevity of your outdoor access point, consider the following maintenance guidelines:

- **Regular Inspection:** Periodically check the device and its connections for any signs of wear, damage, or loose cables.
- **Cleanliness:** Keep the device free from dust, dirt, and debris. Use a soft, dry cloth for cleaning. Avoid using liquid cleaners or aerosols.
- **Environmental Protection:** While the device is IP66 weatherproof, ensure it is installed in a location that minimizes direct exposure to extreme weather conditions where possible, such as heavy snow accumulation or direct, prolonged sunlight in very hot climates.
- **Firmware Updates:** Check the manufacturer's website periodically for firmware updates. Keeping the firmware updated can improve performance, add new features, and enhance security.

# IP67 Weatherproof Enclosure for Outdoor Environments



Figure 6: The device features an IP67 weatherproof enclosure, providing protection against water, cold, lightning, wind, and high temperatures.

## TROUBLESHOOTING

If you encounter issues with your WONLINK AC1200 Outdoor Gigabit Wireless Access Point, try the following steps:

- **No Power:** Ensure the PoE adapter is properly connected to a power source and the Ethernet cable is securely plugged into both the adapter and the device. Check the power indicator light on the PoE adapter.
- **No Internet Connection:** Verify that your main router or modem is functioning correctly and has an active internet connection. Check all Ethernet cable connections.
- **Weak Signal or Slow Speed:** Ensure the device is positioned optimally, away from obstructions and sources of interference. Consider adjusting the antennas. If in Repeater mode, ensure the device is within good range of the main router.
- **Cannot Access Web Interface:** Double-check the IP address entered in the browser. Ensure your computer is connected to the device's Wi-Fi network or directly via Ethernet. Try clearing your browser's cache or using a different browser.

- **Resetting the Device:** If issues persist, you may need to perform a factory reset. Locate the reset button (often a small pinhole) and press and hold it for approximately 5-10 seconds while the device is powered on. This will restore the device to its default factory settings.

## SPECIFICATIONS

Feature	Value
Model Number	WL-AP7202-USHS1-YAM
Wireless Communication Standard	802.11a/b/g/n, 802.11ac
Data Transfer Rate	1200 Megabits Per Second
Frequency Band Class	Dual-Band (2.4GHz & 5GHz)
Item Weight	1.31 pounds
Package Dimensions	8.94 x 7.87 x 2.32 inches
Weatherproof Rating	IP66 (as per feature bullets) / IP67 (as per image) <i>-Note: Conflicting information, using IP66 from feature bullets as primary.</i>
Operating Temperature	-10°C to 60°C

## WARRANTY AND SUPPORT

For detailed warranty information and technical support, please refer to the official WONLINK website or contact their customer service. A digital copy of the Instructions for Use (IFU) is available in PDF format for further reference.

[Download Instructions for Use \(PDF\)](#)

### Related Documents - WL-AP7202-USHS1-YAM



[WONLINK WiFi Extender AC1200 User Manual and Setup Guide](#)

Comprehensive guide for setting up and using the WONLINK WiFi Extender AC1200, including features, modes, and troubleshooting.

[WONLINK WL-NE3502 WiFi Extender: 1200Mbps Dual Band WiFi Booster Setup Guide](#)

User guide for the WONLINK WL-NE3502 WiFi Extender, a 1200Mbps dual-band WiFi booster and repeater. Includes setup instructions, features, and specifications for enhanced wireless network coverage.

[WONLINK AX1800 WiFi 6 Extender: Quick Installation Guide](#)

A concise guide to setting up your WONLINK AX1800 WiFi 6 Extender for improved home network coverage. Learn placement, connection, and configuration steps.

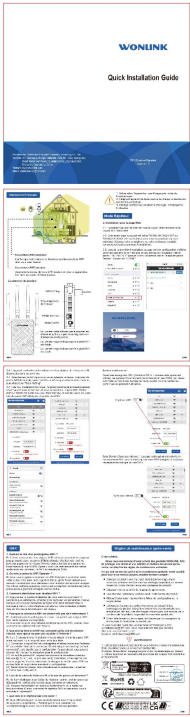
WONLINK

Wireless AP  
Quick Installation Guide



[WONLINK Wireless AP Quick Installation Guide](#)

Quick installation guide for the WONLINK Wireless AP, detailing setup for AP, Bridge, Router, and Repeater modes. Includes network configuration steps and FCC compliance information.



[WONLINK NE3503B WiFi Repeater Quick Installation Guide](#)

This guide provides instructions for installing the WONLINK NE3503B WiFi Repeater, a 1200Mbps dual-band device designed to extend wireless network coverage up to 120 . Learn about setup, configuration, and compliance.



[WONLINK WL-NE3503 WiFi Extender/Repeater Quick Installation Guide](#)

This guide provides step-by-step instructions for installing and configuring the WONLINK WL-NE3503 WiFi Extender/Repeater, including setup, troubleshooting tips, and important safety and regulatory information.