

Mytrix Wireless Pro Controller with Charging Dock (Sakura Pink)

Mytrix Wireless Pro Controller with Charging Dock User Manual

Model: Wireless Pro Controller with Charging Dock (Sakura Pink)

Brand: Mytrix

1. INTRODUCTION

This manual provides detailed instructions for the setup, operation, maintenance, and troubleshooting of your Mytrix Wireless Pro Controller with Charging Dock. Please read this manual thoroughly before using the product to ensure proper functionality and to maximize your gaming experience.

2. PRODUCT OVERVIEW

The Mytrix Wireless Pro Controller is designed for multi-platform compatibility, offering advanced features such as Hall Effect joysticks and triggers, customizable RGB lighting, turbo functions, and programmable macro keys. It comes with a dedicated charging dock for convenient power management.

2.1 Package Contents

- Mytrix Wireless Pro Controller
- Charging Dock
- 2 x USB-C to USB-A Cables
- 4 x Replaceable Joystick Caps (2 tall, 2 short)
- User Manual

2.2 Key Features

- Integrated Charging Dock: Provides convenient charging and storage for the controller and an extra USB adapter.
- Hall Effect Joysticks: Ensures high precision, sensitivity, and eliminates drift for accurate control.
- Hall Effect Triggers: Offers precise and faster response with adjustable

Related Documents - Wireless Pro Controller with Charging Dock (Sakura Pink)



Mytrix Sakura Pink Pro Wireless Controller User Manual

User manual for the Mytrix Sakura Pink Pro Wireless Controller, detailing its features, connectivity, and usage for Nintendo Switch, Windows PC, iOS, and Android devices.



Wireless Switch Pro Controller User Manual

This manual provides instructions for using the Wireless Switch Pro Controller with Nintendo Switch/Lite/OLED, iPhone, Android, PC, Steam, Mac, iOS, iPad, and TV. It covers setup, connection, features like vibration, motion control, turbo, and wake-up functions.



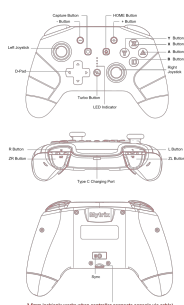
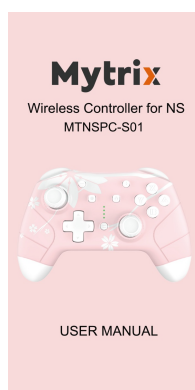
Mytrix Wireless Pro Controller User Manual

Comprehensive user manual for the Mytrix Wireless Pro Controller, detailing setup, features, and customization options for compatibility with Switch, Windows PC, iOS, Android, Steam, and Steam Deck.



GameSir T4 Cyclone Wireless Controller - User Manual and Features

Comprehensive guide to the GameSir T4 Cyclone Wireless Controller, detailing its Hall Effect joysticks, magnetic D-pad, multi-platform compatibility (Switch, PC, Mobile), and ergonomic design for enhanced gaming.



Specification

Input Voltage: 5V, 350mA
Working Voltage: 3.7V
Battery Capacity: 600mAh
Product Size: 154*50*111mm
Weight: 248 ± 10g
Material: ABS

1x Controller
1x USB Type-c Charging Cable
1x User Manual

Package Includes

- 1x Controller
- 1x USB Type-c Charging Cable
- 1x User Manual

Wireless Connection

Please Note: Please make sure the AIRPLANE mode of the console is turned off before situations begin.

First-Time Pairing:

1. From the HIDE menu of the console, select **Controllers Change Grip/Order**.
2. Press and hold the "SYNC" button on the bottom of the, then controller for at least five seconds to power on the controller until all 4 LEDs flash. Once paired, all 4 LEDs will remain lit, and the controller will be shown on the screen.



Wake Up and Reconnect

Once the controller has paired with the console:

- If the console is in the SLEEP mode, the "HOME" button of the controller is able to wake up both the controller and the console.
- If the console is on, all the buttons are able to wake up the controller, the controller will reconnect to the console.

- If unable to connect, please follow the three steps:**
1. Turn off the BT/2.4G mode on the console.
 2. Remove the controller's information on the NS console (System Settings > Controllers and Sensors > Disconnect Controller).
 3. Follow the First Time Pairing steps.

Controller Auto Sleep

- In the wireless connection, press and hold the HOME button for 3 seconds, the controller will be disconnected and turn into sleep mode.
- If the button is pressed within 5 minutes, the controller will automatically sleep.
- The controller sleeps when the controller is in SLEEP mode.

Wired Connection

1. Turn on the "Pro Controller Wired Communication" in the console: System Settings > Controllers and Sensors > Pro Controller Wired Communication > On.

Please Note: The "Pro Controller Wired Communication" must be turned on BEFORE connecting the controller and the Dock with the cable.



2. Set the Switch console on the back for the TV mode. Connect the Switch Dock and the controller directly with the USB Type C to A cable.



3. Press HOME button > Controllers > Change Grip/Order: The controller can with the "USB" displayed on the screen indicates the wired connection is successful.

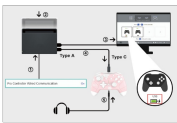


Audio Function

The controller has a 3.5mm audio port, supports 3.5mm wired headset or microphones.

Please Note: The audio function will ONLY work in the wired Connection Mode with a Switch console.

And it will NOT work under the wireless connection or when the controller is wired to a PC.



Please Note: The "Pro Controller Wired Communication" must be turned on BEFORE connecting the controller and the Dock with the cable.

- ① System settings > Controllers and Sensors > Pro Controller Wired Communication > On
- ② Set the Switch console on the back for the TV mode.
- ③ Connect the Switch Dock and the controller with the USB cable.
- ④ The can with "USB" displayed indicates the wired connection is successful.
- ⑤ Plug the 3.5mm audio jack into the audio port on the bottom of the controller.

Turbo and Auto-fire

Buttons Available to Set the Turbo Function:
A/B/X/Y/L/R/ZL/RZ button



- Set up the Turbo Function:**
1. **Manual Turbo Function:** Press and hold the Turbo button, then press any function button ONCE to turn on the "Manual Turbo Function".
 2. **Auto Turbo Function:** equal the first step above to switch to the "Auto Turbo Function".
 3. **Turn Off the Turbo Function:** Repeat the first step after the "Auto Turbo Function" has been set.

Turn Off All the Turbo Functions for all Buttons:
Press and hold the Turbo button for 3 seconds, then press the "Turbo Off" button to turn off the turbo functions of all buttons.

There Are Three Levels For the Turbo Speed:

- **Slow:** 5 shots/s, the corresponding LED indicators will flash at a slow speed.
- **Medium:** 12 shots/s, the corresponding LED indicators will flash at a medium speed (Default level).
- **Fast:** 20 shots/s, the corresponding LED indicators will flash at a fast speed.

Adjust the Turbo Speed Levels:
Press and hold the Turbo button, push down the right joystick to decrease one grade of turbo speed; pull up the right joystick to increase one grade of turbo speed.



You Can Test and Check the Turbo Settings on a Console:
Settings > Controllers and Sensors > Test Input Devices > Test Controller Buttons

Adjust Vibration Intensity

There Are Four Levels of Vibration Intensity:
None, weak, medium, strong.



- Adjust the Vibration Intensity:**
- Press and hold the Turbo button, move the left joystick UP to increase one grade of vibration intensity.
 - Move the left joystick DOWN to decrease one grade of vibration intensity.

Wired Connection on STEAM

- Connect the controller to the computer with the USB cable.
- It will be recognized as the STEAM "Pro Controller" mode and can be used for supported games.

Functions Comparison

Platform	Vibration	Turbo	Simultaneous Motion	Auto-Fire
Switch Wireless	✓	✓	✓	✓
Switch Wired	✓	✓	✓	✓
PC/STEAM	✓	✓	✓	✗

Charging Instructions

- The controller can be charged using the Switch charger, the Switch Dock, 5V 2A power adapter, or USB power supplies with the USB Type C to A cable.
- If the controller is connected with the console while charging, the corresponding channel LED light(s) on the controller will flash. The channel LED light(s) will stay lit if the controller has been fully charged.
- If the controller is not connected with the console while charging, the 4 LED lights will flash. The LED lights will go off when the controller has been fully charged.
- When the battery is low, the corresponding channel LED light(s) will flash; the controller will turn off and need to be charged if the battery is exhausted.

Calibrate the Control Sticks

- Press the HOME button > System Settings > Controllers and Sensors > **Calibrate Control Sticks** > **Calibrate the Controller** > Fix the controller on a horizontal plane and hold "L" or "R" on the controller you want to calibrate.
- Follow the on-screen instructions to verify the controller functionality.




Calibrate Motion Controls

Press the HOME button > System Settings > Controllers and Sensors > **Calibrate Motion Controls** > **Calibrate the Controller** > Fix the controller on a horizontal plane and hold "L" or "R" on the controller you want to calibrate.

- Please Note:**
- When using the wireless controller for the first time, it is recommended to have both the Controller Sticks and Motion Controls calibrated before usage.
 - If the calibration fails, please press the "Y" button to restore the settings and press the "X" button to repeat the calibration steps. Power off the controller once the calibration is finished, then restart the controller and console.

Mytrix Pink Cherry Wireless Controller User Manual and Guide

This user manual provides comprehensive instructions for the Mytrix Pink Cherry Wireless Controller (MTNSPC_S01) for Nintendo Switch. It covers wireless and wired connection setup, controller functions like turbo and vibration, charging, calibration, and troubleshooting.

<p>Warranty</p> <p>The product comes with a 1-year limited warranty. Our goal is to achieve total customer satisfaction, we will do our best to understand our customer's requirements and always meet the requirements. If you have any questions, please do not hesitate to contact us via info@myntech.com. We will be more than happy to assist you.</p> <p>Company Information</p> <p>Company: Myntech Technology LLC Customer Service Tel: +1 (719) 496-4821 Customer Service Email: info@myntech.com Web: www.myntech.com Address: 11 Garfield St., Unit C, Salem NH 03079</p> <p>FC CE RoHS X</p>	
	<p>COVEENA Switch Pro Controller AL-NS2258 User Guide</p> <p>Comprehensive guide for the COVEENA Switch Pro Controller AL-NS2258, covering features, connectivity, customization, and troubleshooting for Nintendo Switch, PC, and mobile devices.</p>