



[Manuals.plus](#) /

› [BIWIBON](#) /

› BIWIBON Fingerprint Door Lock (Model BCA-02) User Manual

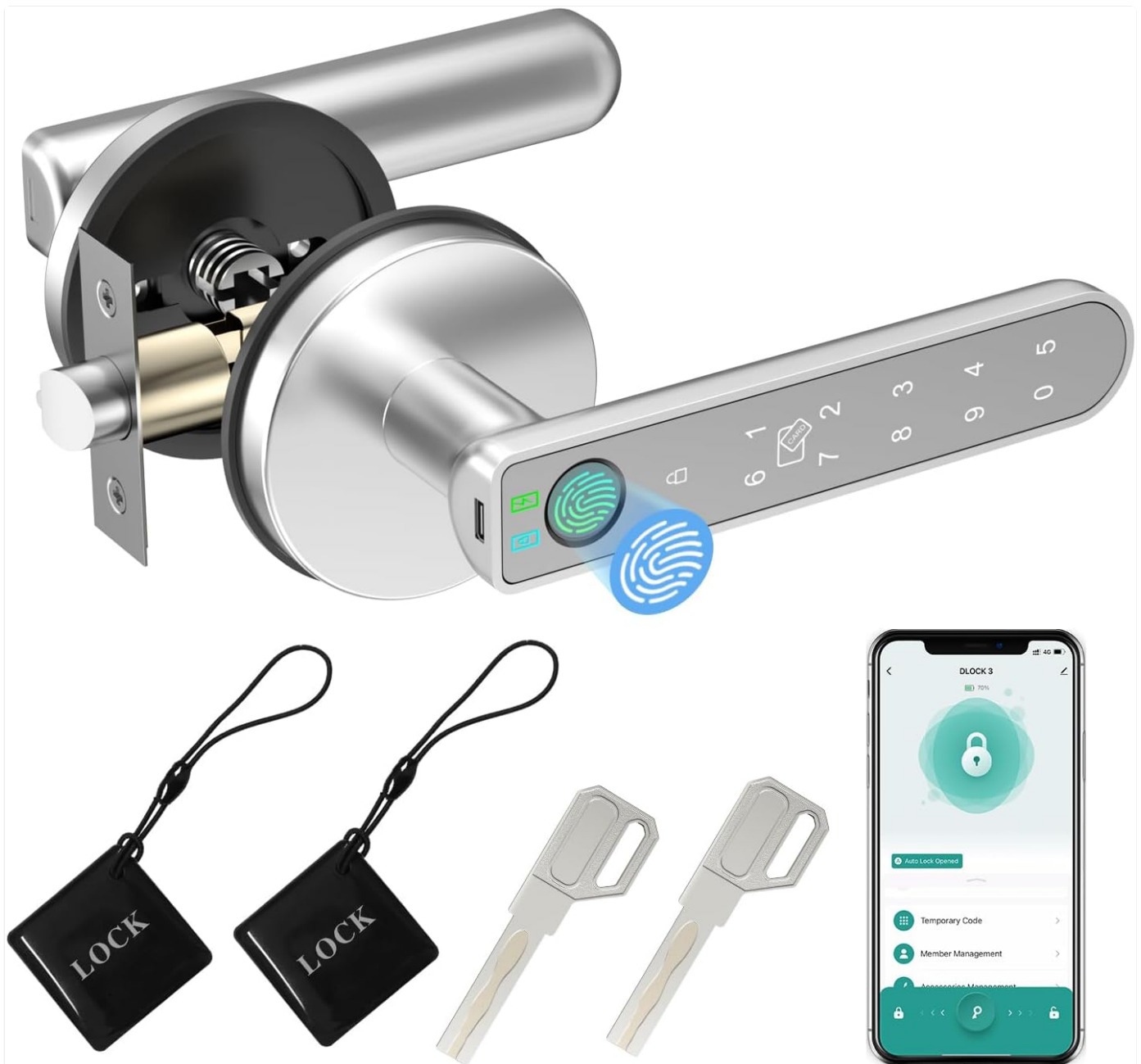
BIWIBON BCA-02

BIWIBON Fingerprint Door Lock User Manual

Model: BCA-02

INTRODUCTION

Thank you for choosing the BIWIBON Fingerprint Door Lock. This smart door knob offers advanced security and convenience with multiple unlocking methods, including fingerprint, mobile app, IC cards, password, and traditional keys. This manual provides detailed instructions for installation, setup, operation, and maintenance to ensure optimal performance and security.



The BIWIBON Fingerpoint Door Lock, showcasing its sleek design and the various components for access, including IC cards, mechanical keys, and the associated mobile application interface.

SAFETY INFORMATION

- Do not attempt to disassemble or repair the lock yourself. Refer to qualified personnel for service.
- Keep mechanical backup keys in a secure location outside the property.
- Ensure the door is properly aligned and closes smoothly before installation to prevent damage to the lock mechanism.
- Use only specified AAA alkaline batteries. Do not mix old and new batteries or different types of batteries.
- Avoid exposing the lock to direct sunlight, rain, or corrosive substances.

PACKAGE CONTENTS

Verify that all components are present before beginning installation:

- Front Handle Assembly (with fingerprint sensor and keypad)

- Back Handle Assembly (with battery compartment)
- Single Latch
- Strike Plate
- 2 Mechanical Backup Keys
- 2 IC Cards
- Square Cotter
- 2 Spiral Tubes
- Screws (various sizes)
- User Manual (this document)

INSTALLATION GUIDE

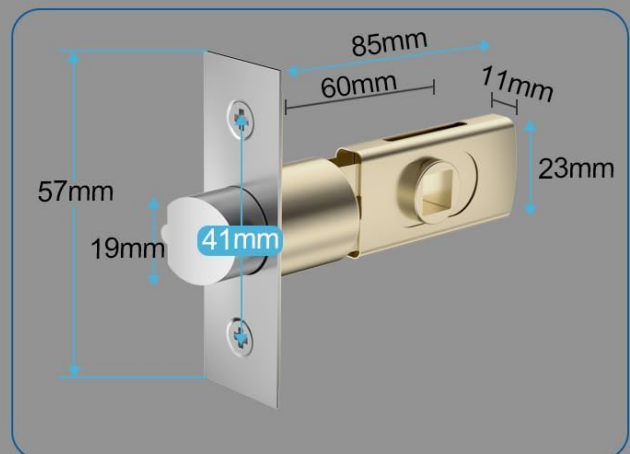
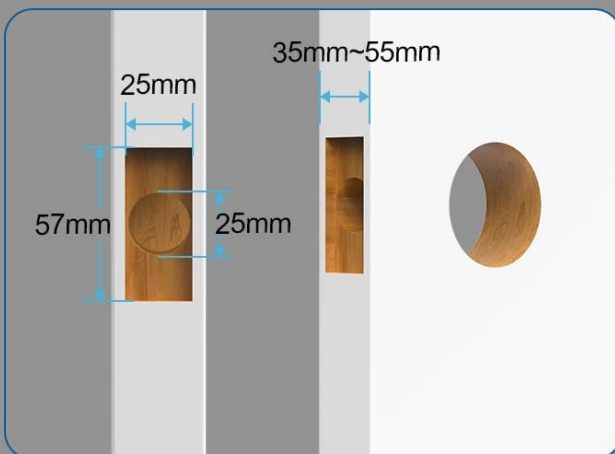
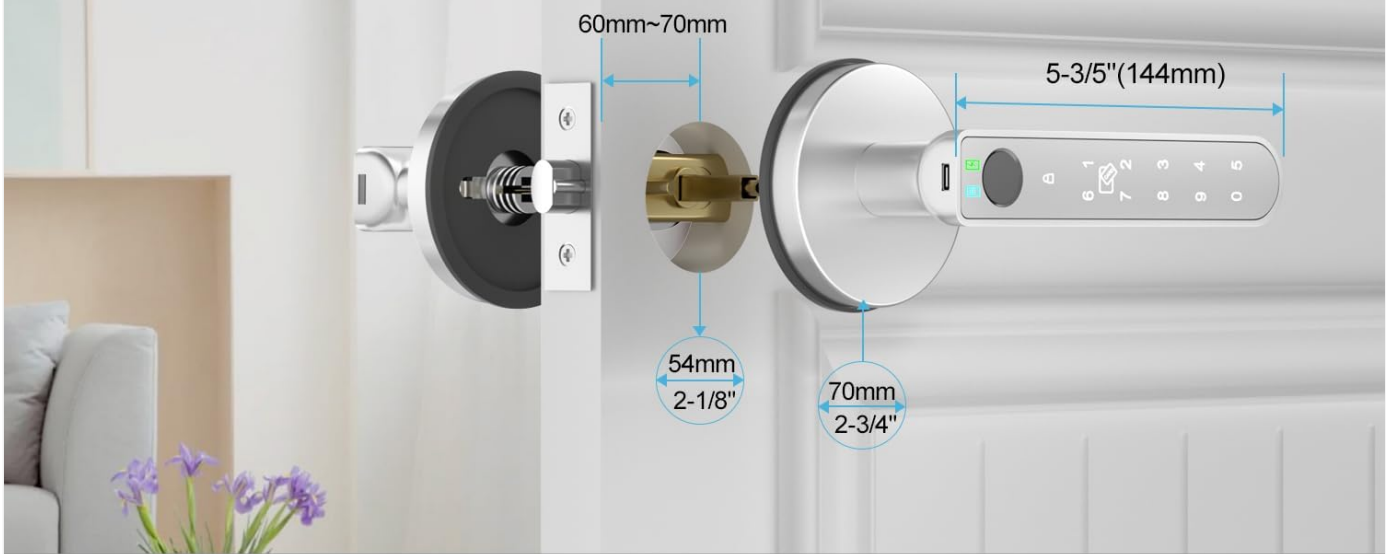
The BIWIBON Fingerprint Door Lock is designed for easy installation on most standard US doors. No additional drilling is typically required for standard door preparations.

1. Prepare the Door

Ensure your door meets the following specifications:

- **Door Thickness:** 35mm-55mm (1.38"-2.17")
- **Backset:** 60mm-70mm (2-3/8"-2-3/4")
- **Cross Bore Diameter:** 54mm (2-1/8")

Fits Most Standard US Doors



Door and lock component dimensions, illustrating compatibility with standard US door preparations. This includes measurements for door thickness, backset, and bore hole diameters.

2. Install the Latch

1. Insert the single latch into the door edge. Ensure the latch bolt faces the correct direction (beveled edge towards the door frame).
2. Secure the latch with the provided screws.

3. Install the Front Handle

1. Feed the cable from the front handle through the cross bore hole.
2. Align the square cotter with the latch mechanism.
3. Position the front handle assembly on the exterior side of the door.

4. Install the Back Handle

1. Connect the cable from the front handle to the port on the back handle assembly.

2. Align the back handle with the square cotter and the mounting holes.
3. Secure the back handle to the front handle using the spiral tubes and screws. Do not overtighten.

5. Install Batteries

1. Open the battery cover on the back handle.
2. Insert 4 new AAA alkaline batteries, ensuring correct polarity.
3. Close the battery cover. The lock will emit a sound indicating it is powered on.

6. Install the Strike Plate

1. Align the strike plate with the latch bolt on the door frame.
2. Secure the strike plate with the provided screws.

SETUP AND PROGRAMMING

After installation, configure your lock using the mobile application.

1. Download and Pair the App

1. Download the "Tuya Smart" or "Smart Life" app from your smartphone's app store.
2. Create an account or log in.
3. Follow the in-app instructions to add your new door lock. Ensure Bluetooth is enabled on your phone and you are near the lock.



The mobile application interface for smart control, allowing users to manage access, generate temporary codes, and view lock history.

2. Add Fingerprints

1. In the app, navigate to the lock settings and select "Fingerprint Management."
2. Follow the prompts to register new fingerprints. You will be asked to place your finger on the sensor multiple times from different angles.



A user interacting with the fingerprint sensor on the door lock, demonstrating the biometric unlock method.

3. Set Passcodes

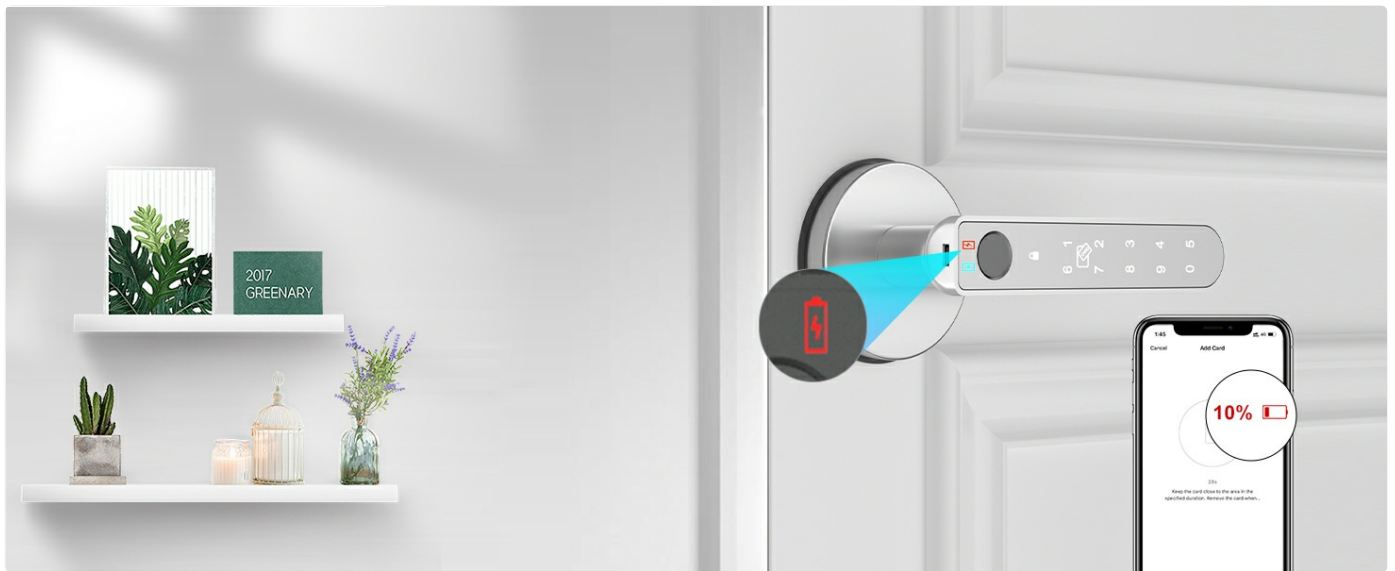
1. From the app, select "Password Management."
2. You can create permanent, timed, or one-time passcodes.
3. Enter your desired passcode on the lock's keypad to test it after creation.



A user entering a numerical code on the integrated touchscreen keypad of the smart door lock.

4. Register IC Cards

1. In the app, go to "IC Card Management."
2. Select "Add Card" and then tap the IC card against the designated area on the lock (usually near the keypad or fingerprint sensor).



A user unlocking the door by tapping an IC card against the smart lock's sensor.

OPERATING INSTRUCTIONS

Unlocking Methods

- **Fingerprint:** Place your registered finger on the sensor. The lock will unlock if recognized.
- **Passcode:** Enter your 6-8 digit passcode on the keypad, followed by '#'.
- **IC Card:** Tap a registered IC card against the sensor area.
- **Mobile App:** Open the app, select your lock, and tap the unlock icon.
- **Backup Key:** Insert the mechanical key into the keyhole and turn to unlock.

Fingerprint Door Lock

Multiple Ways to Unlock



The BIWIBON smart door lock offers multiple access options: mobile app, fingerprint, IC card, password, and traditional mechanical key.

Advanced Features

- **Anti-Peeping Passcode:** When entering your passcode, you can input random digits before and after your actual code to obscure it from onlookers. Example: [Random Digits] + [Your Passcode] + [Random Digits].
- **Passage Mode:** Activate this mode via the app to keep the door unlocked for a specified period, useful for gatherings or when frequent entry/exit is needed.
- **Auto-Lock:** The lock can be configured via the app to automatically lock after a set period (e.g., 5-30 seconds) once the door is closed.
- **Remote Access (BIWIBON Gateway Required):** With the optional BIWIBON Gateway (sold separately), you can remotely lock/unlock your door, generate temporary codes, and monitor access records from anywhere via Wi-Fi.



Voice control functionality with Amazon Alexa and Google Assistant, requiring the BIWIBON Gateway (sold separately) for remote and smart home integration.

MAINTENANCE

- **Battery Replacement:** When the low battery alert sounds or is indicated in the app, replace all 4 AAA batteries promptly.
- **Emergency Power:** If batteries die completely, connect a power bank to the micro-USB port on the front handle for temporary power to unlock the door. This port is for emergency power only, not for charging internal batteries.
- **Cleaning:** Wipe the lock surface and fingerprint sensor with a soft, dry cloth. Avoid abrasive cleaners or solvents.

Problem	Possible Cause	Solution
App cannot connect to lock.	Bluetooth off, too far from lock, or app issue.	Ensure Bluetooth is on and you are within range. Restart app/phone. Re-pair if necessary.
Lock is jammed.	Misalignment or obstruction.	Check for obstructions in the door frame or latch. Ensure proper installation alignment.

SPECIFICATIONS

Feature	Detail
Model Name	BCA-02 App Control Fingerprint Door Lock with Keypad
Brand	BIWIBON
Lock Type	Biometric, App Control, Touchscreen Keypad
Material	Metal
Color	Silver
Item Dimensions (L x W x H)	5.7 x 2.75 x 2.75 inches
Item Weight	2.15 Pounds
Power Source	4 x AAA Batteries (not included)
Connectivity Protocol	Bluetooth (Wi-Fi with optional Gateway)
Controller Type	Tuya Smart App
Fingerprint Capacity	Up to 100
IC Card Capacity	Up to 100
Password Capacity	Up to 100
Recommended Uses	Interior door lock, bedroom, office, apartment

WARRANTY AND SUPPORT

For warranty information, technical support, or assistance with your BIWIBON Fingerprint Door Lock, please refer to the contact information provided with your purchase or visit the official BIWIBON website. Additional protection plans may be available for purchase separately.

