

Phomemo M832

Phomemo M832 Portable Thermal Printer User Manual

Model: M832

INTRODUCTION

The Phomemo M832 Portable Thermal Printer is a compact, inkless printing solution designed for convenience and mobility. This manual provides comprehensive instructions for setting up, operating, and maintaining your printer, ensuring optimal performance and longevity.

WHAT'S IN THE BOX

- 1 x Phomemo M832 Portable Printer
- 1 x Thermal paper roll (pre-installed in the printer paper bin)
- 1 x Flannel Storage Bag
- 1 x USB-C Charging Cable
- 1 x Quick Start Guide

PRODUCT OVERVIEW

Familiarize yourself with the key components of your Phomemo M832 printer:

M832 Portable Printer At One Glance



Image: Phomemo M832 Portable Printer showing its dimensions and button locations.

1. **Power Button:** Press and hold for 3 seconds to turn the printer on or off.
2. **Open Cover Button:** Press on both sides simultaneously to open the printer cover for paper loading.
3. **Power Port:** Insert the USB-C cable here for charging the printer.
4. **Reset Button:** Press to reset the device if needed.

1. Charging the Printer

Before first use, fully charge the printer. Connect the provided USB-C cable to the printer's power port and the other end to a 5V 2A power adapter (not included). Avoid using chargers with output above 5V.



Image: The Phomemo M832 printer being charged, illustrating its 2600mAh battery and capacity for 150 continuous prints.

The built-in 2600mAh rechargeable battery allows for printing up to 150 sheets on a full charge.

2. Loading Thermal Paper

The Phomemo M832 supports various thermal paper types and sizes, including 8.5" x 11" US Letter, A4, 2.08"(53mm), 3.15"(80mm), and 4.33"(110mm). It can use thermal roll paper, folded thermal paper, and single sheet thermal paper.

1. Press the open cover buttons on both sides of the printer to open the top cover.
2. Insert the thermal paper into the paper bin, ensuring the printable side is facing up. For roll paper, remove any plastic wrapping and ensure the leading edge is straight.
3. Adjust the paper guides to fit the width of your paper.
4. Close the top cover firmly until it clicks into place.

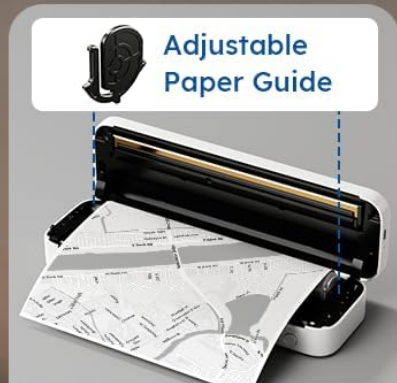
Print on Different Thermal Paper Sizes



Single Sheet Thermal Paper



Continuous Thermal Paper



Thermal Paper Roll

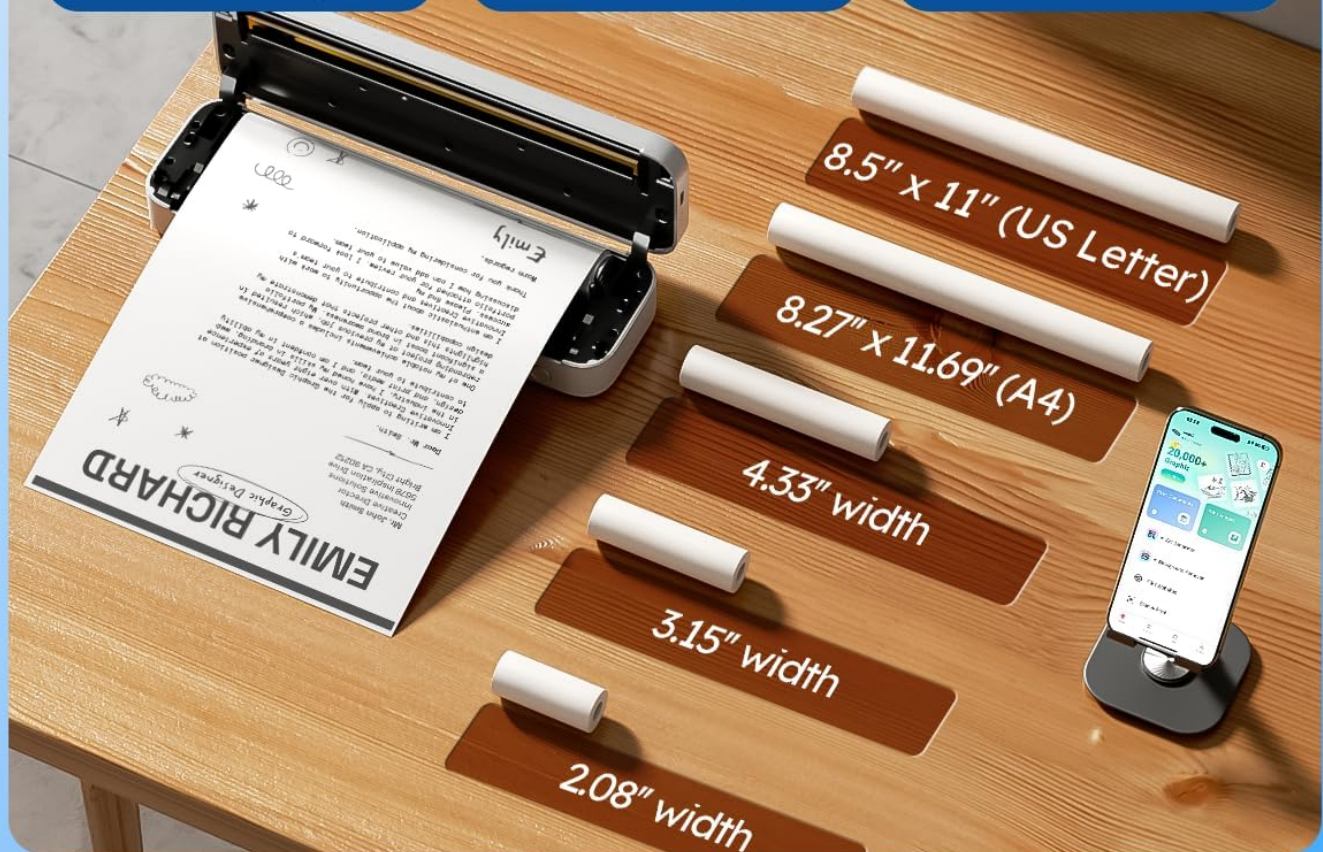


Image: The Phomemo M832 printer demonstrating compatibility with various thermal paper sizes and types, including single sheet, continuous, and roll paper.

3. Connecting to Your Device

Bluetooth Connection (for Mobile Phones/Tablets)

The Phomemo M832 is compatible with iOS 13 and above, and Android 7 and above.

1. Download the "Phomemo" app from the App Store (iOS) or Google Play Store (Android).

2. Ensure Bluetooth is enabled on your mobile device.
3. Open the Phomemo app and follow the in-app instructions to connect to your printer. The app will guide you through the pairing process.



Image: Visual guide for connecting the Phomemo M832 printer to a mobile device via Bluetooth using the Phomemo app.

USB-C Cable Connection (for Laptops/Computers)

The printer is compatible with macOS 10.14 and above, Windows 7/8/10/11 (both 32-bit and 64-bit), Chrome OS, and Linux.

1. Connect your M832 printer to your laptop or computer using the provided USB-C cable.
2. Download and install the necessary drivers from m832.phomemo.com.
3. Once drivers are installed, select the M832 printer from your computer's print options to begin printing.




Image: Instructions for connecting the Phomemo M832 printer to a laptop or computer using a USB-C cable and installing drivers.

OPERATING INSTRUCTIONS

Basic Printing Steps

1. Ensure the printer is powered on and connected to your device (via Bluetooth or USB-C).
2. Open the document, image, or web page you wish to print on your device.
3. Select the print option from your application or device settings.
4. Choose "Phomemo M832" as your printer.
5. Adjust print settings (e.g., paper size, orientation) as needed.
6. Initiate the print job. The printer will feed the thermal paper and produce the printout.



Image: The Phomemo M832 printer in action, demonstrating its ability to print documents, invoices, and other materials from a connected smartphone.

Print Quality

The Phomemo M832 features a 300 DPI (dots per inch) print resolution, providing clear and crisp black and white prints. This high resolution ensures that text and graphics are sharp and legible.

Image: A visual comparison highlighting the enhanced print quality of the Phomemo M832 (300 DPI) compared to a 200 DPI printer.

Inkless Printing Technology

This printer utilizes advanced thermal technology, eliminating the need for ink cartridges, toner, or ribbons. This design prevents common issues like clogging and reduces ongoing costs, making printing more efficient and economical. Only thermal paper is required for operation.

Inkless Printing



Image: Illustration of the Phomemo M832's inkless thermal printing technology, showing no need for ink, toner, or ribbons.

Versatile Usage

The compact and portable design of the Phomemo M832 makes it suitable for various environments and uses, including:

- **Travel:** Ideal for business trips, vehicle use (cars, trucks), and mobile notary services.
- **Office & Home:** Perfect for small offices, home use, and printing documents, contracts, invoices, and receipts.
- **Education:** Useful for students and teachers for printing study notes, worksheets, and customized cards.

- **Personal Use:** Great for printing recipes, letters, shopping lists, and DIY projects.



Bluetooth Connection

Download "Phomemo" App
Connect Bluetooth in the APP

USB-C Cable Connection

Download Driver from
"M832.phomemo.com"

The image displays the Phomemo M832 printer in two scenarios. In the top scenario, the printer is on a wooden table, printing a document with the 'MKT GENCY' logo. A smartphone on a stand is connected to the printer via Bluetooth, indicated by a blue signal icon. In the bottom scenario, the printer is connected to a laptop via a USB-C cable, with a USB icon indicating the connection. The printer is shown printing the same 'MKT GENCY' document. Various operating system icons are overlaid on the image to indicate compatibility: Tablet, Android, iOS, macOS, Windows, Chrome OS, and Linux.

Image: The Phomemo M832 printer being used in various settings: on a flight, outdoors, in an office, and on a campus, highlighting its portability.

MAINTENANCE

Cleaning the Printer

To ensure consistent print quality and prolong the life of your printer, regular cleaning is recommended:

- Turn off the printer and disconnect it from the power source.
- Gently wipe the exterior of the printer with a soft, dry, lint-free cloth.
- To clean the thermal print head, use a cotton swab lightly dampened with isopropyl alcohol. Wipe the print head gently and allow it to dry completely before closing the cover or using the printer.
- Remove any paper dust or debris from the paper path using a soft brush or compressed air.

Thermal Paper Storage

Store thermal paper in a cool, dry place away from direct sunlight, heat, and humidity. Exposure to these elements can degrade the paper's thermal coating, leading to faded or unreadable prints over time.

TROUBLESHOOTING

This section addresses common issues you might encounter with your Phomemo M832 printer.

Problem	Possible Cause	Solution
Printer does not turn on.	Low battery or power issue.	Ensure the printer is charged. Connect to a 5V 2A power source using the USB-C cable.
Cannot connect via Bluetooth.	Bluetooth not enabled, app issue, or interference.	Ensure Bluetooth is enabled on your device. Make sure no other devices are connected to the printer. Restart the Phomemo app and the printer. If using multiple Apple devices, turn off Bluetooth on the unused device.
Poor print quality (faded, inconsistent).	Print head dirty, incorrect paper, or low battery.	Clean the thermal print head as described in the Maintenance section. Ensure you are using high-quality thermal paper. Charge the printer fully.
Paper jam or misfeed.	Improper paper loading or damaged paper.	Open the cover and carefully remove any jammed paper. Ensure paper is loaded correctly and aligned with the guides. Use undamaged thermal paper.
Printer not recognized by computer (USB).	Missing or incorrect drivers.	Ensure drivers are installed from m832.phomemo.com . Try restarting your computer with the printer connected and powered on. Try a different USB-C port or cable.

SPECIFICATIONS

Feature	Detail
---------	--------

Feature	Detail
Model Name	M832 Portable Printer
Product Dimensions	10.39"D x 1.77"W x 3.07"H
Item Weight	1.52 pounds
Printing Technology	Thermal
Connectivity Technology	Bluetooth, USB Type C
Maximum Black and White Print Resolution	300 DPI
Maximum Media Size	8.5 x 11 inch (US Letter)
Supported Sheet Sizes	8.5" X 11" (US Letter), A4, 4.33" (110mm), 3.15"(80mm), 2.08"(53mm) Inches
Compatible Devices	Smartphones, PC, Tablets, Laptops (iOS, Android, macOS, Windows, Chrome OS, Linux)
Battery Capacity	2600mAh (Lithium Ion)
Prints per Full Charge	Up to 150 sheets
Inkless Printing	Yes
Control Method	App
Included Components	Printer, Thermal paper roll, Flannel Storage Bag, USB-C Cable, Quick Start Guide

WARRANTY AND SUPPORT

For warranty information and technical support, please refer to the official Phomemo website or contact Phomemo customer service. Details can typically be found in the Quick Start Guide included with your product or on the manufacturer's website.

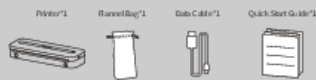
You can also visit the Phomemo Store on Amazon for additional product information and support resources [Phomemo Store](#)



Before using this product, please read this manual carefully.

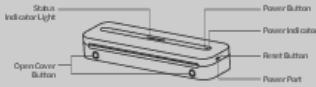
English

01. Package Contents



*Attention: All pictures in this instruction manual are for illustration purposes only. The actual product may vary due to product enhancement.

02. Printer Components



Button Function

(Power) Button Function	Operation
Turn on the printer	Press and hold the button for around 3 seconds until the power indicator light turns on.
Print QR code	Double press the button to print QR code. You can scan the QR code using the App on the phone and connect to the printer.
Turn off the printer	Press and hold the button for around 3 seconds until the power indicator light turns off.

Indicator Light

Status	Power Indicator	Status Indicator Light
Normal	Light (Green)	Light (Blue)
Cover is open	Light (Red)	Light (Blue)
Charging will be powered on	Off	Light (Green) (Blink)
Charging will be powered on (in a Sleepy State)	Light (Green)	Light (Green) (Blink)
Relay Charged	Light (Green)	Light (Blue)
Low Power	Blink (Slowly) (Red)	Light (Blue)
Bluetooth Connected	Light (Green)	Light (Blue)
Normal	Light (Green)	Light (Blue)
No Paper / Paper Not Detected	Light (Red)	Light (Blue)
Others	Light (Red)	Light (Blue)
Reset Button	Off	Off

03. Precautions

1. Please use 5V as input for charging.
2. Please connect the USB cable to the power adapter before charging, please gently insert or unplug the charging cable when charging, to prevent excessive force from damaging the port.
3. After the charging is completed, please unplug the charging cable in time.
4. In order to avoid damage, do not use or charge in the environment of high temperature, high humidity, heavy smoke, and dust, such as in bathrooms, steam rooms, near to open flame, etc.
5. Improper charging may cause damage to the print head.
6. Do not let the print head to prevent cooling caused by overheating.
7. The heat of black ink is very high, please be careful to avoid touching it by mistake.
8. If the machine is small and using, insert the reset hole to reset the machine.

Battery warning instructions

- *It is forbidden to disassemble, hit, squeeze the battery, or throw it into fire.
- *If severe swelling occurs, please do not touch it.
- *Do not place in a high temperature environment, and it is strictly prohibited to use the battery after swelling is visible.
- *There is a danger of explosion if the battery is replaced by the wrong type. Be sure to dispose of the used battery according to the instructions.
- *If consumers use a power adapter for power supply, they should purchase a power adapter that meets the requirements of corresponding safety standards or a power adapter with CCC certification.

04. Install App

1. Download the App

Please search for "Phomemo" on your phone's App market and download the App.

Search for Phomemo in the Apple App Store, click to download and install.



Search for Phomemo in the Google App Store, click to download and install.



2. How to download and install driver

Download the latest driver from the official website. Download the relevant driver according to the your operating system version and follow the instruction to install the driver.



PC Driver for Windows

PC Driver for MAC

05. Instructional

1. Instructions for consumable usage

1. Press the two Open Cover Buttons at the same time to open the cover.
2. Take out the randomly included paper roll and unroll it.
3. Install the paper roll back into the paper compartment and pull the paper out of the Paper Output Slot. Close the Cover.
4. Press and hold the power button for 3 seconds to boot the printer.

- Print this to differentiate the front and back of the printing paper.
1. Take a piece of printing paper and scratch both side of the paper with your fingernail. The front side of the side with color, install the paper with the front side facing upward.
 2. This product can print different size of paper. Please adjust the position of the consumable holder according to the width of the consumables.
 3. Touch the reset button, please ensure you are printing paper.

2. Instructions for single sheet paper and folded paper usage.

1. You can set the paper type into the corresponding one in the app application.
 2. When using a single sheet of paper or folded paper, use two hands to hold the paper and make sure it is straight and aligned. Insert the paper correctly into the printer's feeder until the roller pulls the paper to its optimal position. To achieve the best result, please use our genuine printing paper.
 3. When you need to take out the printed paper, press the open cover button simultaneously, and the machine's top cover will gently pop open. Then, remove the paper.
- Print
1. The paper must be correctly aligned to the paper feeder.
 2. This product can print different size of paper. Please adjust the position of the consumable holder according to the width of the consumables.

Phomemo M832 Portable Printer User Manual and Guide

Comprehensive user manual for the Phomemo M832 portable printer, covering setup, operation, troubleshooting, and specifications. Learn how to connect, print, and maintain your device.

lang:en score:51 filesize: 452.78 K page_count: 1 document date: 2024-10-30

③ When using "folded paper", after printing your documents, tear along the perforation lines.

3-1. Connect the printer to the App



① Method 1

Turn on the Bluetooth on your phone, launch the Phenoma APP, tap on the icon at the upper right corner of the Phenoma APP main interface, and select the corresponding model from the drop-down list to establish a connection.

*Note: system needs to enable positioning and allow apps to obtain relevant permissions.

② Method 2

Double press the printer's power button to print a QR code. Open your Phenoma App and press the button on the top right of your Phenoma App home page. On the selection page, press scan and scan the QR code to connect to the printer.

3-2. Connect the printer to the computer



① Step One

Connect one end of the data cable to your computer and the other end to the printer's USB port. Turn on your printer.

② Step Two

Enter official website and download the printer's drivers. Install the printer's driver.

Official website: M032.phenoma.com

③ Step Three

Add the printer to your computer and establish a connection. Once the connection is established, you can print your documents from your computer.

06. Official Printing Paper Type

① Normal thermal paper: Does not contain B-spherical A.

② With tab in Quick-drying thermal paper: Thermal paper that does not contain B-spherical A, can be written on, and dries quickly.

*The printing papers mentioned above are official printing papers.

*Any issues with your printer arising from using non-official printing papers will not be covered under our warranty policy.

07. Warranty card

☐ Return ☐ Exchange ☐ Repair

User Info	Name:	Gender:	Phone:
	Address:		
Product Info	Purchase date:		
	Product order number:		
	Product Serial Number:		
Requirements of return (replacement/repair)	Reason and description:		
Maintenance records	Call time and location:	Maintenance person:	
	Handling situation:	Delivery date:	
	Maintenance ticket number:	Delivery date:	

08. FCC Warning

FCC Warning statement:

This device complies with part 15 of the FCC Rules. Operation is subject to the following two conditions: (1) This device may not cause harmful interference, and (2) this device must accept any interference received, including interference that may cause undesired operation.

Any Changes or modifications not expressly approved by the party responsible for compliance could void the user's authority to operate the equipment.

This equipment has been tested and found to comply with the limits for a Class B digital device, pursuant to part 15 of the FCC Rules. These limits are designed to provide reasonable protection against harmful interference in a residential installation. This equipment generates uses and can radiate radio frequency energy and, if not installed and used in accordance with the instructions, may cause harmful interference to radio communications. However, there is no guarantee that interference will not occur in a particular installation. If this equipment does cause harmful interference to radio or telecommunication, which can be determined by turning the equipment off and on, the user is encouraged to try to correct the interference by one or more of the following measures:

- Reorient or relocate the receiving antenna.
- Increase the separation between the equipment and receiver.
- Connect the equipment into an outlet on a circuit different from that to which the receiver is connected.
- Consult the dealer or an experienced radio/TV technician for help.

FCC RF exposure statement:

The device has been evaluated to meet general RF exposure requirement. The device can be used in portable operation condition without restriction.

09. IC Warning

IC Warning statement:

This device contains licence-exempt transmitter(s)/receiver(s) that comply with Innovation, Science and Economic Development Canada's licence-exempt RSS(s). Operation is subject to the following two conditions:

1. This device may not cause interference.
2. This device must accept any interference, including interference that may cause undesired operation to the device.

L'émission et la réception de fréquences radio sont conformes aux exigences de l'Innovation, Science et Développement économique Canada applicables aux appareils radio exempts de licence. L'exploitation est autorisée aux deux conditions suivantes:

- 1.L'appareil ne doit pas produire de brouillage.
- 2.L'appareil doit accepter tout brouillage radioélectrique subi, même si le brouillage est susceptible d'en compromettre le fonctionnement.

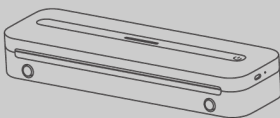
RF exposure statement

IC RF exposure statement:

The device has been evaluated to meet general IC RF exposure requirement. The device can be used in portable operation condition without restriction.

IC Déclaration d'exposition aux RF:

L'appareil a été évalué pour répondre aux exigences générales d'exposition aux RF d'IC. L'appareil peut être utilisé dans des conditions d'opération portable sans restriction.



Quick Start Guide

Smartphone-controlled スマートフォンと接続する Smartphone-Steuerung



1

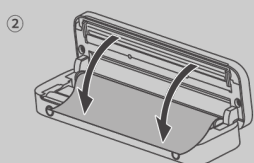
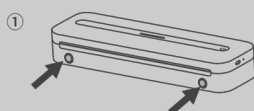


English Get/install the Phomemo App.

日本語 Phomemoアプリをインストールする

Deutsch Holen/installieren Sie die Phomemo App.

2

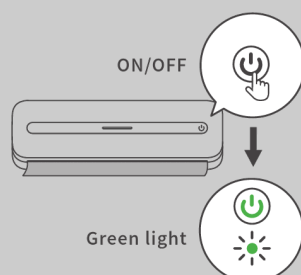


English Follow the steps to load the paper roll properly.

日本語 手順に従って紙ロールを正しくセットしてください。

Deutsch Folgen Sie den Schritten, um die Papierrolle ordnungsgemäß zu laden.

3

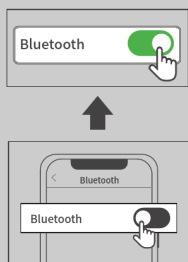


English Press and hold for 3s to turn on the M832 printer.

日本語 3秒を長押しすると、M832起動できる

Deutsch Halten Sie 3 Sekunden lang gedrückt, um den M832-Drucker einzuschalten.

4

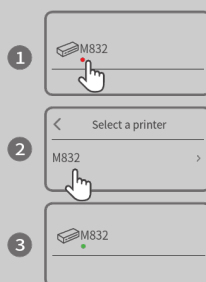


English Turn on Bluetooth from phone settings.

日本語 スマートフォンの設定からBluetoothをオンにする

Deutsch Aktivieren Sie Bluetooth über die Telefoneinstellungen.

5

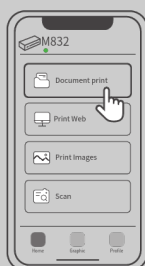


English Connect the printer via Bluetooth in the phomemo App.

日本語 phomemoアプリでBluetoothを利用してM832と接続する

Deutsch Verbinden Sie den Drucker über Bluetooth in der Phomemo App.

6



English Select the file in the Phomemo App to print.

日本語 Phomemoアプリでファイルを選択して印刷する

Deutsch Wählen Sie die zu druckende Datei in der Phomemo App aus.

FCC Warning

This device complies with part 15 of the FCC Rules. Operation is subject to the following two conditions: (1) This device may not cause harmful interference, and (2) this device must accept any interference received, including interference that may cause undesired operation. Any Changes or modifications not expressly approved by the party responsible for compliance could void the user's authority to operate the equipment.

This equipment has been tested and found to comply with the limits for a Class B digital device, pursuant to part 15 of the FCC Rules. These limits are designed to provide reasonable protection against harmful interference in a residential installation. This equipment generates uses and can radiate radio frequency energy and, if not installed and used in accordance with the instructions, may cause harmful interference to radio communications. However, there is no guarantee that interference will not occur in a particular installation. If this equipment does cause harmful interference to radio or television reception, which can be determined by turning the equipment off and on, the user is encouraged to try to correct the interference by one or more of the following measures:

- Reorient or relocate the receiving antenna.
- Increase the separation between the equipment and receiver.
- Connect the equipment into an outlet on a circuit different from that to which the receiver is connected.
- Consult the dealer or an experienced radio/TV technician for help.

The device has been evaluated to meet general RF exposure requirement. The device can be used in portable exposure condition without restriction.

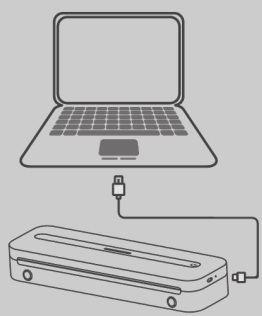
IC Caution:
Radio Standards Specification RSS-Gen, Issue 5- English:
This device contains licence-exempt transmitter(s)/receiver(s) that comply with Innovation, Science and Economic Development Canada's licence-exempt RSS(s). Operation is subject to the following two conditions:
This device must accept any interference, including interference that may cause undesired operation of the device.
RF exposure statement:
The device has been evaluated to meet general RF exposure requirement. The device can be used in portable exposure condition without restriction.

- French:
Cet appareil contient des émetteurs / récepteurs exempts de licence conformes aux RSS (RSS) d'Innovation, Sciences et Développement économique Canada. Le fonctionnement est soumis aux deux conditions suivantes:
Cet appareil ne doit pas causer d'interférences.
Cet appareil doit accepter toutes les interférences, y compris celles susceptibles de provoquer un fonctionnement indésirable de l'appareil.
Déclaration d'exposition RF:
L'appareil a été évalué pour répondre aux exigences générales d'exposition aux RF. L'appareil peut être utilisé dans des conditions d'exposition portable sans restriction.



Scan the QR code to view more instructions.
QRコードをスキャンして詳しい説明書を見る
Scannen Sie den QR-Code, um weitere Anweisungen anzuzeigen.

Computer Printing with Data Cable
データケーブルを使用したコンピュータ印刷
Computerdruck mit Datenkabel



1



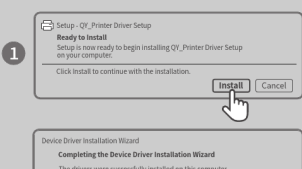
English Open the link: M832.phomemo.com
日本語 リンクを開きます: M832.phomemo.com
Deutsch Öffnen Sie den Link: M832.phomemo.com

2



English Download the corresponding drive for your computer system.
日本語 コンピュータシステム向けのドライバをダウンロードします
Deutsch Laden Sie das entsprechende Laufwerk für Ihr Computersystem herunter.

3



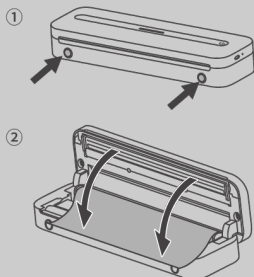


English Follow the above instructions to install the driver.

日本語 上記の手順でドライバーをインストールしてください。

Deutsch Folgen Sie den obigen Anweisungen, um den Treiber zu installieren.

4

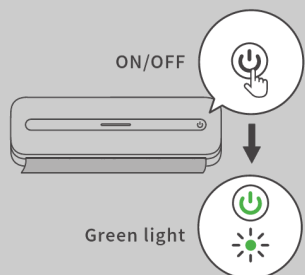


English Follow the steps to load the paper roll properly.

日本語 手順に従って紙ロールを正しくセットしてください。

Deutsch Folgen Sie den Schritten, um die Papierrolle ordnungsgemäß zu laden.

5

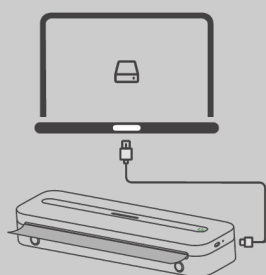


English Press and hold for 3s to turn on the M832 printer.

日本語 3秒を長押しすると、M832起動できる。

Deutsch Halten Sie 3 Sekunden lang gedrückt, um den M832-Drucker einzuschalten.

6



English Connect the printer to your computer with a Type-C data cable.

日本語 Type-Cデータケーブルを使用してプリンターをコンピュータに接続します。

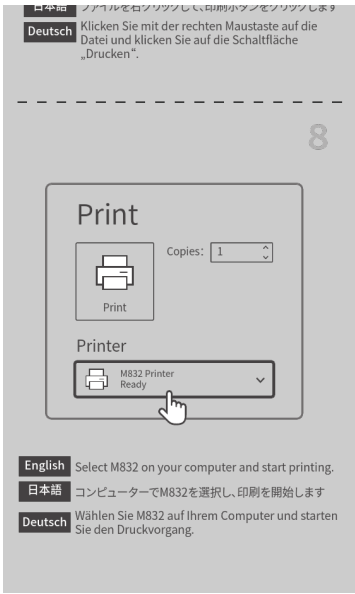
Deutsch Schließen Sie den Drucker mit einem Typ-C-Datenkabel an Ihren Computer an.

7



English Right-click the file and click the print button.

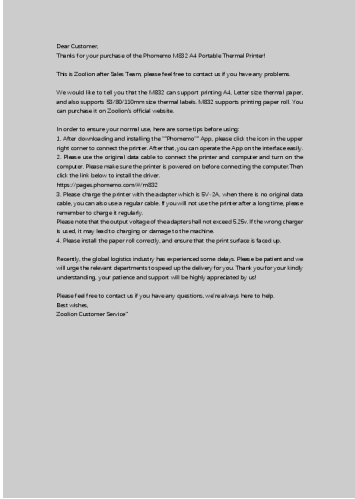
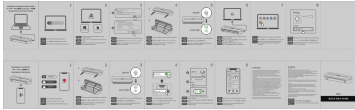
日本語 ファイルを右クリックし、印刷ボタンをクリックします。



[Phomemo M832 Printer Quick Start Guide](#)

A concise guide to setting up and using the Phomemo M832 printer with both computer and smartphone connections, including driver installation, paper loading, and Bluetooth pairing.

lang:en score:35 filesize: 538.88 K page_count: 1 document date: 2024-02-27



[Phomemo M832 A4 Portable Thermal Printer User Guide and Tips](#)

Information and usage tips for the Phomemo M832 A4 Portable Thermal Printer by Zoolion, including setup instructions and troubleshooting advice.

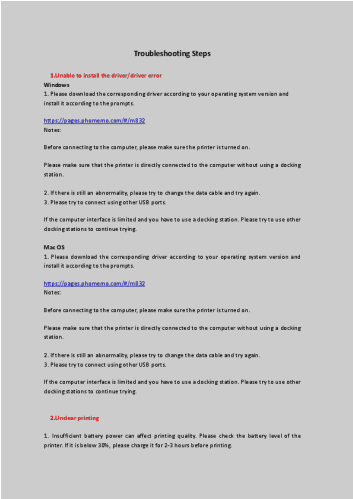
lang:en score:31 filesize: 58.24 K page_count: 1 document date: 2024-01-31



[Phomemo Brand Book 2025: Fun Memo](#)

Explore the Phomemo brand book for 2025, detailing the Phomemo story, products, and media presence. Discover the company's journey, its innovative printing solutions, and its vibrant community.

lang:en score:29 filesize: 5.61 M page_count: 39 document date: 2025-01-22

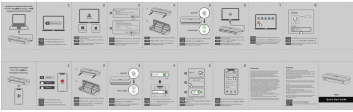


[pdf] Installation Guide Troubleshooting Guide

Z Troubleshooting Steps Please open the App Phomemo and connect printer via Bluetooth No need to setting on your phone Select model connect 81MHX4F60yL m media amazon images I |||

Troubleshooting Steps 1.Unable to install the driver/driver error Windows 1. Please download the corresponding driver according to your operating system version and install it according to the prompts. <https://pages.phomemo.com/#/m832> Notes: Before connecting to the computer, please make sure the pr...

lang:en score:26 filesize: 493.4 K page_count: 9 document date: 2024-10-25



Phomemo M832 Quick Start Guide: Computer and Smartphone Printing

A concise guide to setting up and using the Phomemo M832 portable thermal printer for printing from computers via USB-C and smartphones via Bluetooth. Covers installation, connection, and basic operation.

lang:en score:23 filesize: 538.89 K page_count: 1 document date: 2024-02-27