



[Manuals.plus](#) /

› [Teexpert](#) /

› Teexpert Fast Cure Epoxy Resin Kit (128 OZ) - Instruction Manual

Teexpert TP-FASTEPOXY-002

Teexpert Fast Cure Epoxy Resin Kit (128 OZ) Instruction Manual

Model: TP-FASTEPOXY-002

1. INTRODUCTION

This manual provides comprehensive instructions for the safe and effective use of the Teexpert Fast Cure Epoxy Resin Kit. Designed for various art and craft projects, this 128 OZ kit offers a rapid demold time and a crystal-clear finish. Please read all instructions carefully before beginning your project.



Image 1: Teexpert Fast Cure Epoxy Resin Kit (128 OZ) with example resin creations.

2. PRODUCT FEATURES

- **Fast Curing & 4-Hour Demold:** Achieve demolding in approximately 4 hours, with full cure typically within 8 to 10 hours at room temperature.
 - **Crystal Clear & Low Odor:** Formulated to cure to a crystal-clear, high-gloss finish with minimal odor, suitable for indoor use with proper ventilation.
 - **Easy 1:1 Mixing Ratio:** Simple 1:1 ratio by volume for resin (Part A) and hardener (Part B), making it user-friendly for beginners and experienced artists.
 - **Heat Resistant & Non-Yellowing:** Once fully cured, the resin can withstand temperatures up to 212°F (100°C) and is resistant to yellowing, scratches, and water.
 - **Versatile Application:** Ideal for small arts, crafts, jewelry making, keychains, coasters, and as a protective top coat for various surfaces.
-

WHY CHOOSE TEEPERT FAST CURING EPOXY RESIN?

TEEXPERT



DEMOLD: 4H



FULL CURING: 8-10H

OTHERS



DEMOLD: 12H



FULL CURING: 24-72H

VS

Image 2: Comparison highlighting Teexpert's faster demold and full curing times.

3. SAFETY INFORMATION

Always prioritize safety when working with epoxy resin. While Teexpert resin is non-toxic, non-flammable, and VOC-free, adherence to safety protocols is essential.

- **Ventilation:** Work in a well-ventilated area.
- **Personal Protective Equipment (PPE):** Wear appropriate gloves (nitrile recommended) and eye protection (safety glasses or goggles) to prevent skin and eye contact.
- **Skin Contact:** In case of skin contact, wash immediately with soap and water. Do not use solvents.
- **Eye Contact:** In case of eye contact, flush immediately with plenty of water for at least 15 minutes and seek medical attention.
- **Ingestion:** Do not ingest. If swallowed, do not induce vomiting. Seek immediate medical attention.
- **Storage:** Keep out of reach of children and pets. Store in a cool, dry place away from direct sunlight and heat sources.

4. SETUP & PREPARATION

Proper preparation is key to a successful resin project.

- **Workspace:** Ensure your workspace is clean, dry, and level. Cover surfaces with plastic sheeting or silicone mats to protect against spills.
- **Temperature:** The ideal working temperature is between 72-85°F (22-30°C). If the resin bottles are cold, warm them up by placing them in a warm water bath (not hot) for 10-15 minutes before mixing. This helps reduce viscosity and minimize bubbles.
- **Tools:** Gather all necessary tools: mixing cups, stir sticks, gloves, safety glasses, and any molds or items you plan to embed.
- **Materials:** If embedding organic materials like wood or dried flowers, ensure they are completely dry and sealed to prevent discoloration or bubble release.

How To Remove Bubbles From Resin?

1. Warm up the bottles and workspace to 72-85°F.
2. Mix resin slowly at least 3-4 minutes.
3. Let your resin sit for a minute or two after mixing
4. Careful Pouring
5. With heat to pop bubbles: You can use a heat gun to remove bubbles.
6. If you're working with any organic materials (wood, flowers, etc.) be sure they are properly dried and sealed before including them in your resin.
7. Mix from the bottom up



Image 3: Cold weather resin tips, emphasizing warming resin for optimal results.

5. MIXING INSTRUCTIONS

Accurate mixing is crucial for proper curing and a clear finish.

- **Measure:** Measure equal parts of Resin (Part A) and Hardener (Part B) by volume into separate clean, dry mixing cups. The ratio is 1:1.
- **Combine:** Pour both parts into a larger, clean mixing cup.
- **Stir:** Stir the mixture slowly and thoroughly for 3-4 minutes. Use a flat-edged stir stick to scrape the sides and bottom of the cup frequently to ensure all components are fully incorporated. Avoid aggressive stirring, which can introduce excessive air bubbles.
- **Pot Life:** The working time (pot life) for this fast-cure resin is approximately 25 minutes.

Your browser does not support the video tag.

Video 1: Demonstration of mixing Teexpert Fast Curing Epoxy Resin and pouring into molds.

6. APPLICATION GUIDELINES

Once mixed, the resin is ready for application.

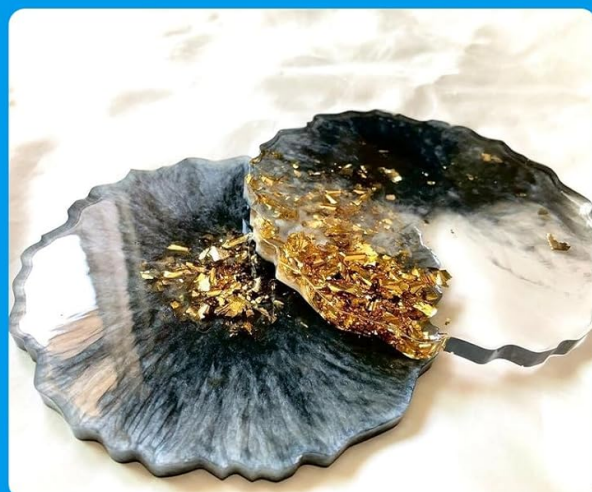
- **Pouring:** Pour the mixed resin slowly into your mold or onto your prepared surface. Slow pouring helps minimize new air bubbles.
- **Self-Leveling:** The resin is self-leveling, which aids in achieving a smooth, even surface.
- **Ideal Projects:** This resin is ideal for small projects such as jewelry, keychains, dominoes, and

coasters. It is also suitable for top coats on various art pieces.

Ideal for small arts, crafts such as



Jewelry & Ring



Coasters



Keychains



Wood Craft

Image 4: Examples of small art and craft projects suitable for Teexpert Fast Cure Epoxy Resin.

7. CURING PROCESS

The resin will begin to cure shortly after mixing.

- **Demold Time:** Projects can typically be demolded after 4 hours, depending on ambient temperature and humidity.
- **Full Cure:** The resin achieves full hardness and heat resistance after 8-10 hours. Allow this full cure time before subjecting your piece to heavy use or high temperatures.
- **Heat Resistance:** Once fully cured, the resin can withstand temperatures up to 212°F (100°C), making it suitable for items like coasters.



HEAT RESISTANT

Teexpert epoxy resin can withstand high temperatures up to 212°F after curing, perfect for coasters...

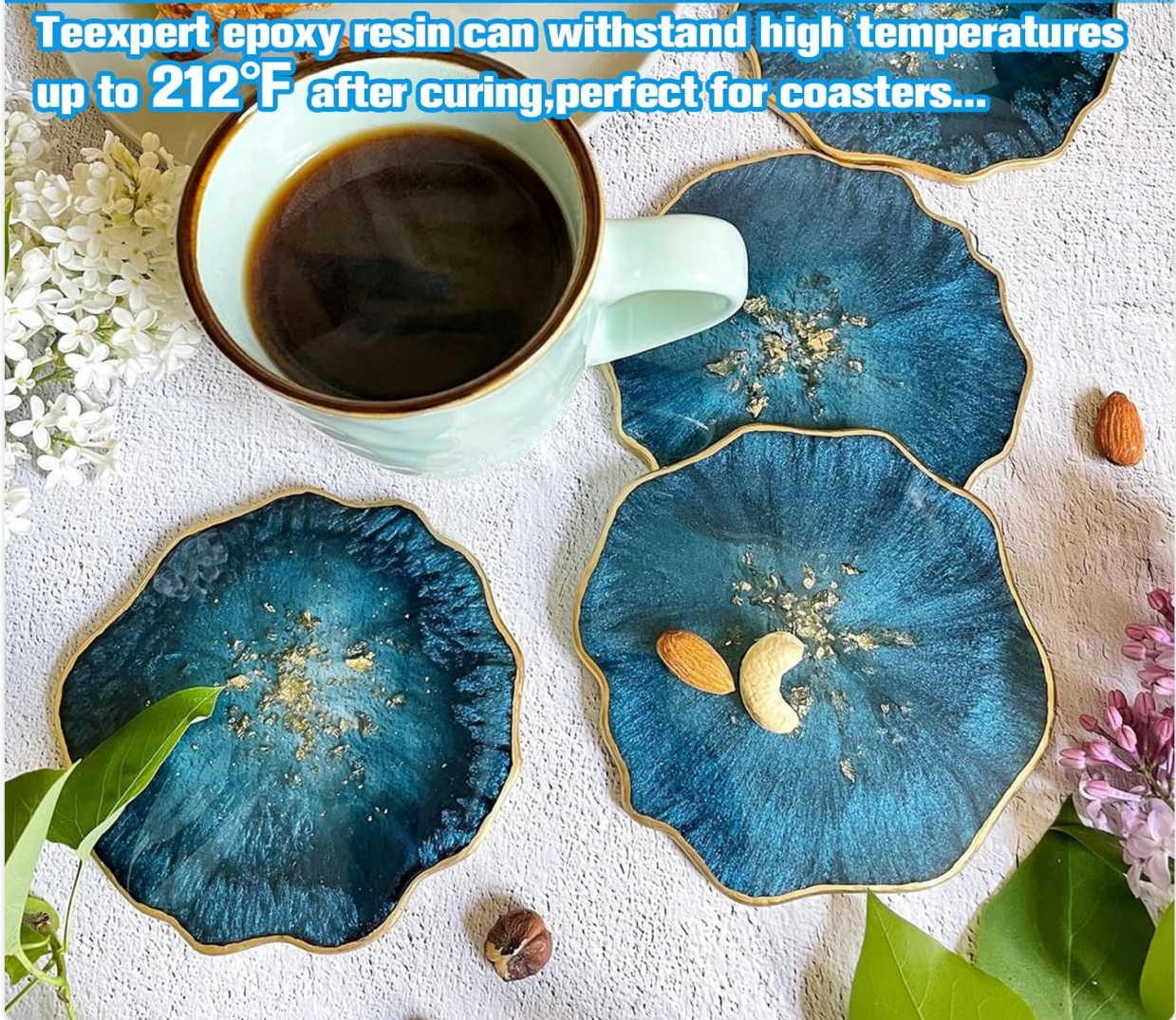


Image 5: Cured resin coasters demonstrating the product's heat resistance.

8. TROUBLESHOOTING

8.1. Bubbles in Cured Resin

- **Warm Resin:** Ensure resin and hardener are warmed to 72-85°F before mixing.
- **Slow Mixing:** Stir slowly for 3-4 minutes to avoid incorporating air.
- **Rest After Mixing:** Let the mixed resin sit for a minute or two before pouring to allow bubbles to rise.
- **Heat Gun/Torch:** After pouring, gently pass a heat gun or butane torch over the surface to pop any remaining bubbles. Keep the heat source moving to avoid scorching the resin.



Image 6: Detailed steps for removing bubbles from resin during application.

8.2. Sticky or Soft Resin

- **Accurate Measurement:** Always measure Part A and Part B precisely at a 1:1 ratio by volume. Inaccurate ratios are a common cause of improper curing.
- **Thorough Mixing:** Ensure the resin and hardener are mixed completely, scraping the sides and bottom of the mixing cup. Unmixed resin will not cure properly.
- **Temperature:** Curing in cold temperatures can lead to a soft or sticky finish. Ensure your workspace is within the recommended temperature range (72-85°F).

Your browser does not support the video tag.

Video 2: Overview of Teexpert Epoxy Resin features and application.

9. STORAGE & DISPOSAL

- **Storage:** Store the resin and hardener in their original sealed containers in a cool, dry, and dark place. Avoid extreme temperatures.
- **Disposal:** Cured epoxy resin is inert and can be disposed of as regular solid waste. Uncured resin and hardener should not be poured down drains. Follow local regulations for disposal of liquid chemical waste.

10. SPECIFICATIONS

Specification	Detail
Brand	Teexpert
Model Number	TP-FASTEPOXY-002
Item Volume	1 Gallon (128 Fluid Ounces)
Mixing Ratio	1:1 by Volume
Demold Time	4 Hours (approx.)
Full Cure Time	8-10 Hours
Heat Resistance (Cured)	Up to 212°F (100°C)

Special Features	Crystal Clear, Fast Drying, Heat Resistant, Self-Leveling
Water Resistance Level	Waterproof
Product Dimensions	7.87 x 3.93 x 7.87 inches

11. WARRANTY & SUPPORT

Teexpert is committed to providing quality products and customer satisfaction. For any questions, concerns, or support regarding your Fast Cure Epoxy Resin Kit, please contact Teexpert customer service through the retailer's platform or visit the official Teexpert store online.

The product is designed for trusted quality and performance. Please refer to the product packaging for any specific warranty details or return policies.