

Solimpia RSCX-9610

Solimpia Electric Shaver Set 3-in-1 Multi-Function Grooming Kit User Manual

Model: RSCX-9610

INTRODUCTION

Thank you for choosing the Solimpia Electric Shaver Set. This 3-in-1 grooming kit is designed for versatile personal care, offering a miniature shaver, a full-size trimmer, and a nose hair trimmer. It features an IPX7 waterproof rating for easy cleaning, a powerful motor, and a rechargeable battery with an LCD display for convenience. Please read this manual thoroughly before first use to ensure safe and optimal operation.

IMPORTANT SAFETY INFORMATION

To reduce the risk of electric shock, injury, or damage, always follow these basic safety precautions:

- Keep the appliance dry. Do not immerse the charging adapter in water or other liquids.
- This appliance can be used by children aged 8 years and above and persons with reduced physical, sensory or mental capabilities or lack of experience and knowledge if they have been given supervision or instruction concerning use of the appliance in a safe way and understand the hazards involved. Children shall not play with the appliance. Cleaning and user maintenance shall not be made by children without supervision.
- Only use the charging cable provided with the appliance.
- Do not use the appliance if it is damaged.
- Do not open the appliance. Repairs should only be performed by authorized service personnel.
- Unplug the appliance before cleaning.
- Do not expose the appliance to temperatures above 60°C (140°F).

PACKAGE CONTENTS

Verify that all items are present in the package:

- Solimpia Electric Shaver Handle

- Miniature Shaver Head
- Full-Size Trimmer Head
- Nose Hair Trimmer Head
- 3 Guide Combs (1mm, 2mm, 3mm)
- Cleaning Brush
- USB Charging Cable
- User Manual



Figure 1: The Solimpia Electric Shaver Set, displaying the main unit, three interchangeable heads (miniature shaver, full-size trimmer, nose hair trimmer), three guide combs (1mm, 2mm, 3mm), a cleaning brush, and a USB charging cable.

SETUP

1. Initial Charging

Before first use, fully charge the shaver.

1. Ensure the shaver is turned off.
2. Connect the USB charging cable to the charging port on the bottom of the shaver.
3. Plug the other end of the USB cable into a compatible USB power source (e.g., household plug adapter,

laptop, car USB interface, mobile power bank).

- The LCD display will show the charging progress. A full charge takes approximately 1.5 hours and provides up to 65 minutes of shaving time.



Figure 2: The Solimpia shaver connected to a laptop via its USB charging cable, illustrating the charging process. The display shows "100%" indicating a full charge.

2. Attaching/Detaching Heads

To change the grooming head:

- Ensure the shaver is turned off.
- Grip the shaver handle firmly.
- To detach, gently twist and pull the currently attached head upwards.
- To attach, align the desired head with the slot on the shaver handle and push down until it clicks securely into place.

OPERATING INSTRUCTIONS

The Solimpia Electric Shaver features an LCD display that shows battery percentage, speed setting, and maintenance reminders.



Figure 3: Detailed view of the LCD display, indicating battery charge percentage, two speed settings (I and II), a maintenance reminder icon, and a charging reminder icon.

1. Power On/Off and Speed Selection

- Press the power button to turn the shaver on or off.
- While the shaver is on, press the power button again to cycle between the two speed settings (I and II). Choose the speed based on your hair length and thickness for optimal results.

2. Using the Miniature Shaver Head

Ideal for a close shave on the face and neck.

- Attach the miniature shaver head.
- Turn on the shaver.
- Hold the shaver at a right angle to your skin and move it against the direction of hair growth.
- Stretch your skin with your free hand to ensure a smooth surface for shaving.
- Can be used for dry or wet shaving, including with shaving foam or gel, or in the shower.



Figure 4: A man demonstrating the use of the miniature shaver head for facial hair removal, highlighting its close-shave capability.

3. Using the Full-Size Trimmer Head

Suitable for trimming beards, sideburns, and hair.

- Attach the full-size trimmer head.
- For specific lengths, attach one of the 1mm, 2mm, or 3mm guide combs.
- Turn on the shaver.
- Move the trimmer against the direction of hair growth, ensuring even pressure.
- Use without a comb for precise edging and detailing.

QUICK CLEANING

Detachable blade and body for easy cleaning



Fully washable



Easy to clean



Figure 5: A man using the full-size trimmer head with an attached guide comb to trim hair on the side of his head, demonstrating its use for hair grooming.

3 Guide Combs



Figure 6: The Solimpia shaver displayed alongside its three guide combs (1mm, 2mm, 3mm), with examples of different beard and hair styles achievable using the trimmer.

4. Using the Nose Hair Trimmer Head

For safe and comfortable removal of unwanted nose and ear hair.

- Attach the nose hair trimmer head.
- Turn on the shaver.
- Gently insert the trimmer tip into your nostril or ear canal.
- Move the trimmer in a circular motion to cut hairs. Do not insert too deeply.

3 in 1 Multifunctional grooming kit



Nose Hair Trimmer



Full Size Trimmer



Micro Shaver



Figure 7: A man using the nose hair trimmer head to remove unwanted nose hair, demonstrating the correct application.

MAINTENANCE

Regular cleaning ensures optimal performance and extends the lifespan of your Solimpia shaver.

1. Cleaning the Shaver Heads

The shaver is IPX7 waterproof, allowing for easy cleaning under running water.

1. Ensure the shaver is turned off and unplugged from any charging source.
2. Detach the used shaver head.
3. Rinse the detached head and the shaver body under warm running water.
4. Use the provided cleaning brush to remove any stubborn hair clippings from the blades and internal components.
5. Allow all parts to air dry completely before reattaching or storing.

INTERCEPT SHAVING TECHNOLOGY

Intercept Trimmer pre-trims long hairs for a close shave

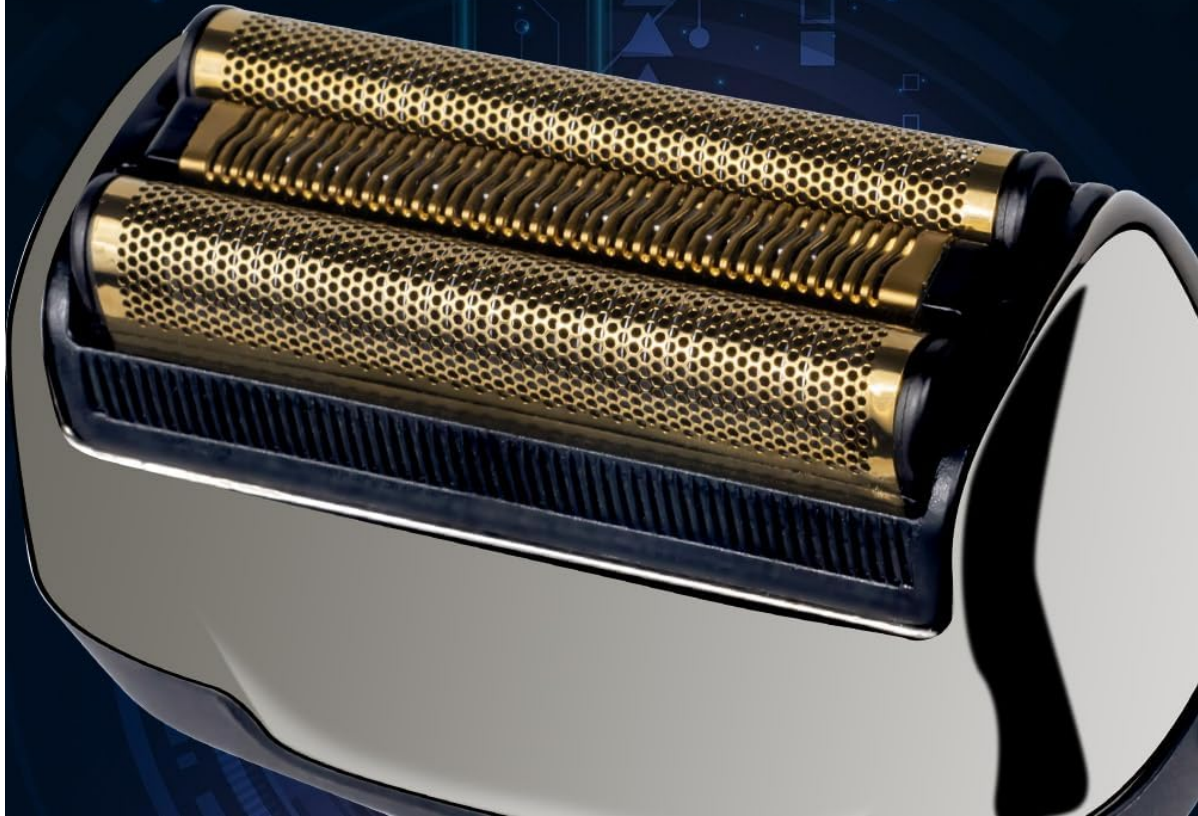


Figure 8: The shaver head being cleaned under running tap water, demonstrating the waterproof feature for easy maintenance.

2. Blade Care

- Periodically apply a drop of light machine oil (not included) to the trimmer blades to maintain sharpness and smooth operation.
- Replace blades if they become dull or damaged to ensure optimal performance and prevent skin irritation.

TROUBLESHOOTING

Problem	Possible Cause	Solution
Shaver does not turn on.	Battery is depleted.	Charge the shaver for at least 1.5 hours.
Poor shaving/trimming performance.	Blades are dull or clogged with hair.	Clean the shaver heads thoroughly. Consider replacing the blades if they are old.

Problem	Possible Cause	Solution
Shaver gets hot during use.	Extended continuous use or clogged blades.	Allow the shaver to cool down. Clean the blades. Avoid excessively long continuous operation.
LCD display not working.	Battery issue or internal fault.	Ensure the shaver is charged. If the problem persists, contact customer support.

SPECIFICATIONS

Model Number	RSCX-9610
Brand	Solimpia
Power Source	Battery Powered (Rechargeable)
Battery Type	1 Lithium-ion (included)
Charging Time	Approx. 1.5 hours
Operating Time	Approx. 65 minutes
Waterproof Rating	IPX7 (Whole body washable)
Motor Speed	8000 RPM
Blade Material	Stainless Steel
Dimensions (L x W x H)	19.6 x 16.8 x 4.9 cm
Weight	410 grams

WARRANTY AND SUPPORT

Solimpia products are manufactured with quality and reliability in mind. For warranty information or technical support, please refer to the contact details provided on the product packaging or the official Solimpia website. Keep your purchase receipt as proof of purchase.