

AOOSTAR MN57

AOOSTAR MN57 Mini PC User Manual

Model: MN57 Ryzen 7 5700U

1. INTRODUCTION

This manual provides essential information for setting up, operating, and maintaining your AOOSTAR MN57 Mini PC. Please read this guide thoroughly before using the device to ensure proper functionality and longevity.

2. PACKAGE CONTENTS

Verify that all items are present in the package:

- AOOSTAR MN57 Mini PC
- Power Adapter
- SATA Cable
- VESA Bracket
- Mounting Screws
- HDMI Cable
- User Manual (this document)

3. PRODUCT OVERVIEW

The AOOSTAR MN57 is a compact and powerful Mini PC designed for various computing tasks, from daily use to gaming. It features an AMD Ryzen 7 5700U processor, 16GB DDR4 RAM, and a 512GB NVMe M.2 SSD, offering a balance of performance and energy efficiency.



Image: Overview of the AMD Ryzen 7 5700U processor specifications and its performance compared to other CPUs.

3.1. Front and Rear Panel Ports

The MN57 Mini PC offers a comprehensive set of ports for connectivity and expansion:

Rich expansion interface



NAS



Surveillance



Projector



Printer



TV



Camera

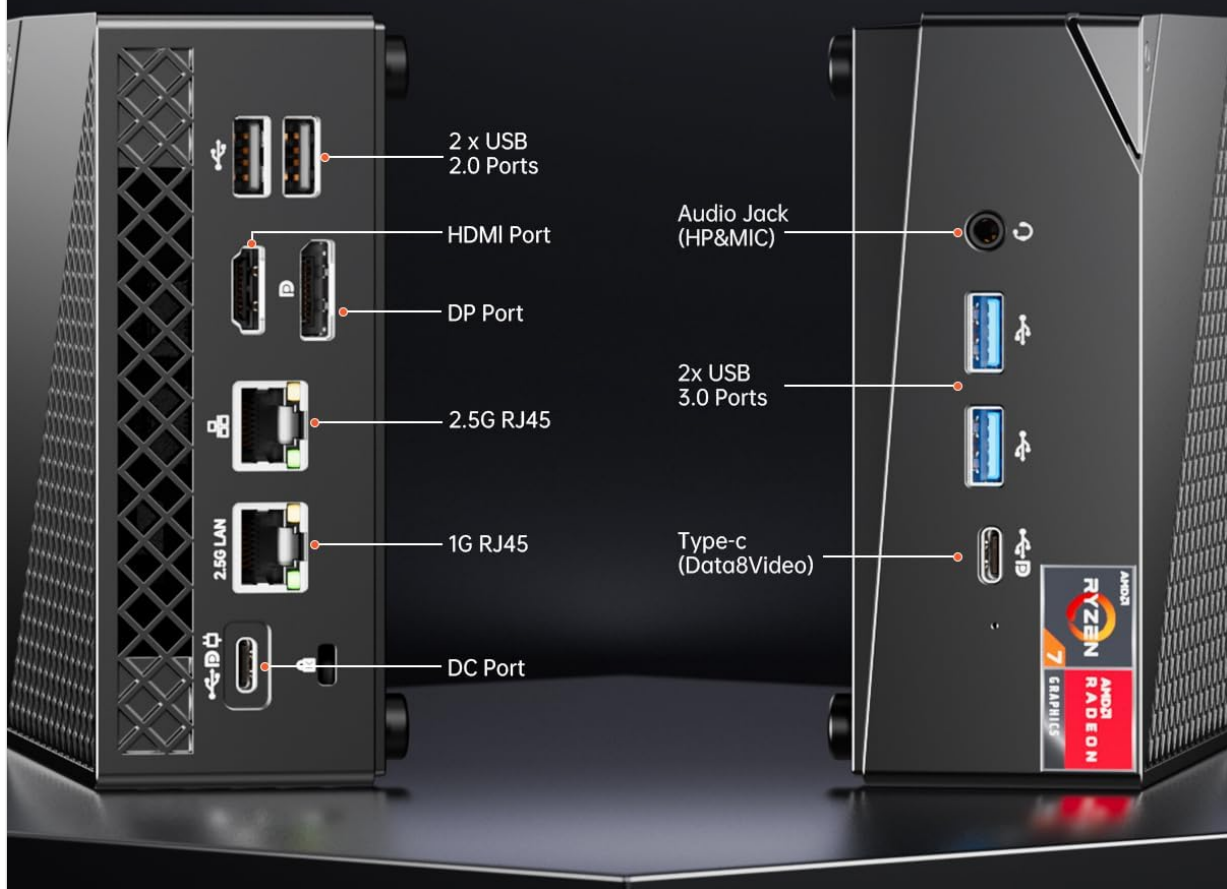


Image: Detailed view of the Mini PC's expansion interfaces, highlighting the location of USB 2.0, USB 3.0, HDMI, DisplayPort, Type-C, Audio Jack, 2.5G RJ45, 1G RJ45, and DC ports.

- **Front Ports:** Audio Jack (HP&MIC), 2x USB 3.0 Type-A
- **Rear Ports:** 2x USB 2.0 Type-A, 1x HDMI Port, 1x DisplayPort, 1x Type-C (Full Function), 1x 2.5G RJ45 LAN Port, 1x 1.0G RJ45 LAN Port, 1x DC Port

3.2. Internal Components

The Mini PC comes pre-installed with Windows 11 Pro and features upgradeable components.



Pre-installed with
W11 PRO



4K Support



16GB RAM
512G M.2 2280 NVME SSD



AMD Ryzen 7 5700U



WIFI 6+ Bluetooth 5.2
2.5G+1.0G Lan Port

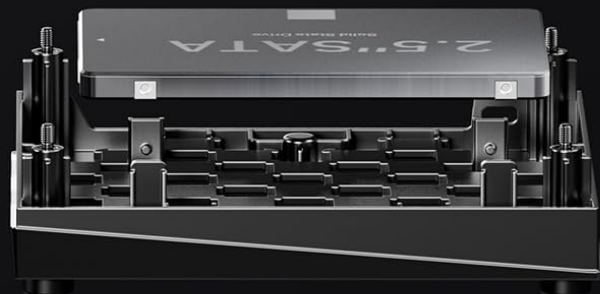
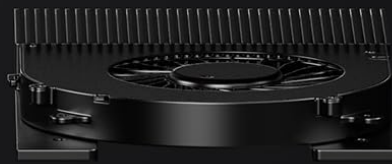


Image: Internal layout of the AOOSTAR MN57, illustrating the AMD Ryzen 7 5700U CPU, 16GB DDR4 RAM, 512GB M.2 2280 NVMe SSD, WiFi 6 + Bluetooth 5.2 module, and LAN ports.

4. SETUP

4.1. Initial Connection

1. Connect your monitor(s) to the HDMI, DisplayPort, or Type-C video outputs. The device supports up to three 4K@60Hz displays simultaneously.
2. Connect your keyboard and mouse to the available USB ports.
3. For wired network access, connect an Ethernet cable to either the 2.5G or 1.0G RJ45 LAN port.
4. Connect the power adapter to the DC port on the Mini PC and then to a power outlet.

4.2. Powering On

Press the power button located on the front panel of the Mini PC. The system will boot into Windows 11 Pro.

4.3. VESA Mounting

The Mini PC can be mounted to the back of a compatible monitor using the included VESA bracket.

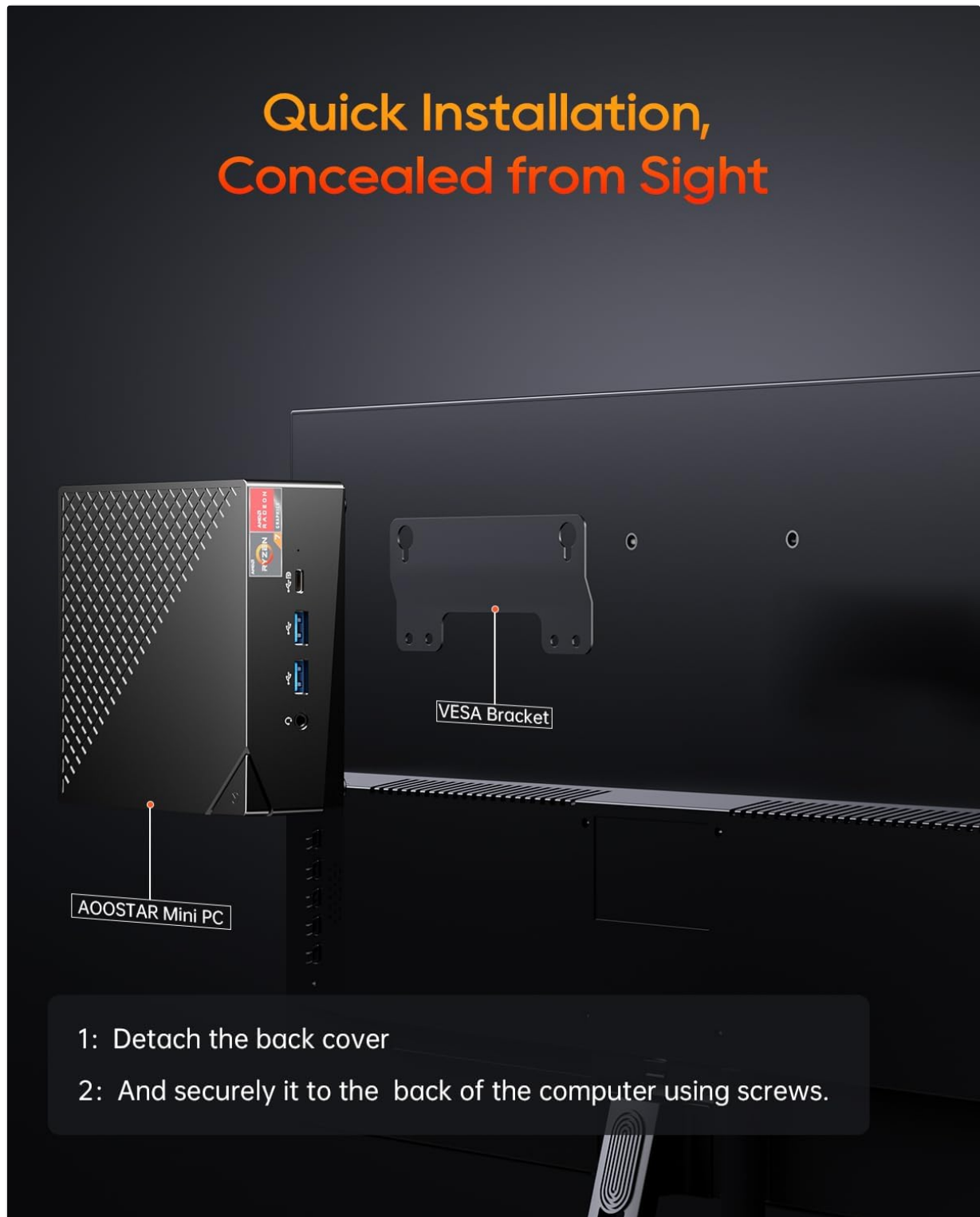


Image: Step-by-step guide for VESA mounting: 1. Detach the back cover. 2. Securely attach the VESA bracket to the back of the computer using screws.

1. Detach the back cover of the Mini PC.
2. Securely attach the VESA bracket to the back of your monitor using the provided screws.

3. Slide the Mini PC onto the VESA bracket until it clicks into place.

5. OPERATING INSTRUCTIONS

5.1. Windows 11 Pro

Your Mini PC comes with Windows 11 Pro pre-installed. Follow the on-screen instructions for initial setup, including language, region, network connection, and user account creation.

5.2. Network Connectivity

- **Wi-Fi:** To connect to a wireless network, click the Wi-Fi icon in the taskbar, select your network, and enter the password. The device supports Wi-Fi 6.
- **Ethernet:** If you connected an Ethernet cable during setup, your PC should automatically connect to the wired network.

5.3. Multi-Display Setup

To configure multiple displays:

1. Ensure all monitors are connected and powered on.
2. Right-click on the desktop and select "Display settings."
3. Windows will detect the connected displays. You can arrange them, change their resolution, and set their orientation.
4. Choose between "Duplicate these displays," "Extend these displays," or "Show only on X" as needed.

6. MAINTENANCE AND UPGRADES

6.1. Storage Expansion

The AOOSTAR MN57 supports adding a 2.5-inch SATA HDD or SSD for additional storage, up to 2TB.

16GB DDR4

Dual channel
Up to 64GB

PCIe SSD

Support add a 2.5" SSD
up to 2T



Image: Illustration of the Mini PC's internal structure, highlighting the 16GB DDR4 dual-channel RAM (expandable up to 64GB) and the PCIe SSD slot, with an example of adding a 2.5-inch SSD.

1. Power off the Mini PC and disconnect all cables.
2. Carefully open the chassis to access the internal components.
3. Connect the 2.5-inch drive to the SATA cable and secure it in the designated bay.
4. Close the chassis and reconnect the cables.

6.2. RAM Upgrade

The Mini PC comes with 16GB DDR4 RAM and can be upgraded to a maximum of 64GB.

1. Power off the Mini PC and disconnect all cables.
2. Carefully open the chassis.

3. Locate the DDR4 SO-DIMM slots. Gently push the clips outwards to release the existing RAM modules, or insert new modules into empty slots.
4. Ensure the modules are seated correctly and the clips snap into place.
5. Close the chassis and reconnect the cables.

6.3. Cleaning

Regularly clean the exterior of the Mini PC with a soft, dry cloth. For internal cleaning, especially the fan and vents, use compressed air to remove dust buildup. Ensure the device is powered off and unplugged before cleaning.

7. TROUBLESHOOTING

- **No Power:** Ensure the power adapter is securely connected to both the Mini PC and a working power outlet. Try a different outlet if necessary.
- **No Display:** Check all video cable connections (HDMI, DisplayPort, Type-C) between the Mini PC and the monitor. Ensure the monitor is powered on and set to the correct input source.
- **No Internet Connection:** For Wi-Fi, verify your network password and router status. For Ethernet, check the cable connection and router settings.
- **Slow Performance:** Close unnecessary applications. Check for background updates. Consider upgrading RAM or ensuring sufficient free storage space.
- **Peripheral Not Detected:** Try connecting the peripheral to a different USB port. Ensure drivers are installed if required.

8. SPECIFICATIONS

Component	Specification
Processor	AMD Ryzen 7 5700U (8 Cores, 16 Threads, up to 4.3 GHz)
Graphics	Integrated AMD Radeon Graphics
RAM	16GB DDR4 (3200 MHz, expandable up to 64GB)
Storage	512GB NVMe M.2 SSD (expandable with 2.5" HDD/SSD up to 2TB)
Operating System	Windows 11 Pro
Video Output	HDMI, DisplayPort, Type-C (supports triple 4K@60Hz display)
USB Ports	2x USB 3.0 Type-A, 2x USB 2.0 Type-A
Network	2.5G RJ45 LAN, 1.0G RJ45 LAN, Wi-Fi 6, Bluetooth 5.2
Audio	1x Audio/Microphone Jack
Dimensions	Approximately 31.7 x 17.09 x 7.11 cm
Weight	Approximately 1.14 kg

9. WARRANTY AND SUPPORT

AOOSTAR provides lifetime technical support and a 12-month satisfaction service for this product. If you encounter any issues or have questions regarding the installation or operation of your Mini PC, please contact AOOSTAR customer support for assistance. Purchasing a quality product is just the beginning; good service ensures its long-term use.