

Vtopek W19S

Vtopek Dashcam 4K Dual Car Camera with WiFi and GPS

Model: W19S

Brand: Vtopek

1. INTRODUCTION

This manual provides detailed instructions for the installation, operation, and maintenance of your Vtopek W19S 4K Dual Car Dashcam. Please read this manual thoroughly before using the product to ensure proper functionality and safety. This dashcam is designed to record high-quality video footage of your journeys, offering features such as 4K resolution, front and rear camera recording, WiFi connectivity, GPS tracking, night vision, and parking monitoring.



An overview of the Vtopek W19S dashcam system, showing the main unit, rear camera, included 64GB SD card, and a smartphone screen displaying the companion app with map and recording interface.

2. PRODUCT FEATURES

- **Ultra-HD 4K Recording:** Records in 4K (front) and 1080P (rear) resolutions, capturing clear details like license plates and road signs.
- **Dual Wide-Angle Lenses:** Front camera with 170° wide angle and rear camera with 140° wide angle to minimize blind spots.

- **Super Night Vision:** Equipped with F1.6 large aperture, 6-layer optical lens, and HDR/WDR technology for enhanced clarity in low-light conditions.
- **Built-in WiFi:** Connects to a mobile application for viewing, playback, downloading, and sharing videos.
- **Integrated GPS:** Records real-time driving speed, date, time, and location, viewable via the mobile app or PC player.
- **3.16-Inch IPS Touch Screen:** Provides a clear interface for settings and video playback.
- **24-Hour Parking Monitor:** Automatically records when motion is detected around the vehicle (requires optional hardwire kit, ASIN: B0C7BFXM3C).
- **G-Sensor:** Automatically locks and saves video footage upon sudden impact or collision.
- **Loop Recording:** Continuously records by overwriting the oldest unlocked files when the memory card is full.
- **Type-C Interface:** Enhanced port for faster data transmission and improved reliability compared to Mini USB.
- **IP69 Waterproof Rear Camera:** Durable and resistant to water and fog, suitable for external installation.



Ultra Clear Video Record

Clearly capture the licence plate of the vehicle in front of you and more details of the road.



Front 4K UHD



4K+1080P
Recording



WIFI



GPS



Front 170°+
Rear 140°



WDR



24H Parking
Monitor



Loop
Recording



G-Sensor



64G SD Card



TYPE-C
Interface

This image highlights the core features of the Vtopek W19S dashcam, such as 4K video recording, WiFi connectivity, GPS, wide-angle lenses (170° front, 140° rear), WDR technology, 24-hour parking monitoring, loop recording, G-sensor, included 64GB SD card, and a Type-C interface.

Super Night Vision

Even in low light, recording the vehicle details accurately.



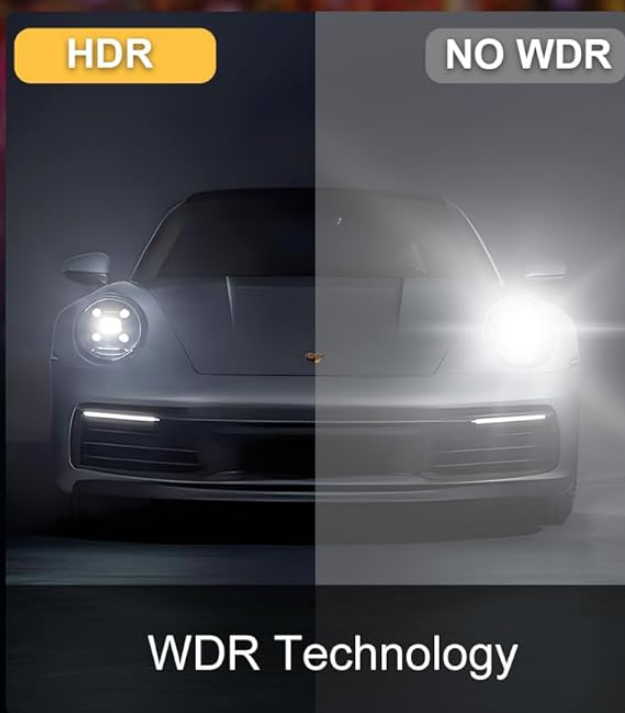
4K UHD



F1.6 Large aperture



WDR



Demonstrates the dashcam's superior night vision capabilities, featuring a clear night recording example, F1.6 large aperture, and WDR technology for enhanced low-light performance. It also illustrates the wide 170° front and 140° rear viewing angles.

3. PACKAGE CONTENTS

Please check the package to ensure all items are present:

- W19 Dash Camera x1
- Rear Camera x1
- 64GB Micro-SD card x1

- Packing Box x1
- Rear Camera Cable (10m/36ft) x1
- Camera Bracket x1
- USB Car Charger with GPS x1
- Screwdriver x1
- Strong Double Sided Tape x1
- Fixing Screw x9
- Cleaning Kit x1
- User Manual x1

Friendly Gift Packagelist



W19 Dash Camera x1



Rear Camera x1



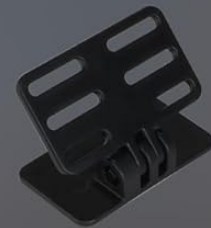
64GB Micro-SD card x1



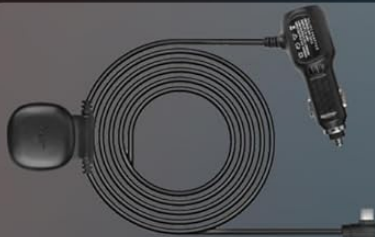
Packing Box x1



Rear Camera Cabel (10m/36ft) x1



Camera Bracket x1



USB Car Charger with GPS



Screwdriver x1



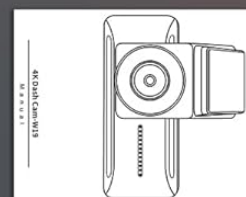
Strong Double Sided Tape x1



Fixing Screw x9



Cleaning Kit x1



User Manual x1

A visual list of all items included in the Vtopek W19S dashcam package, ensuring users can verify they have received all components.

4. SETUP AND INSTALLATION

4.1. Front Camera Installation

1. Clean the area on your windshield where you intend to mount the dashcam. Ensure it does not obstruct your view.

2. Attach the camera bracket to the dashcam.
3. Remove the protective red film from the double-sided tape on the bracket.
4. Firmly press the dashcam with the bracket onto the cleaned windshield area. Hold for a few seconds to ensure a secure attachment.
5. Adjust the front camera lens angle as needed. The lens can be adjusted up and down.

4.2. Rear Camera Installation

The IP69 waterproof rear camera can be installed inside or outside the vehicle. The adjustable 180° bracket allows for flexible mounting without drilling.

1. Choose a suitable location for the rear camera, typically above the license plate or inside the rear window.
2. Secure the rear camera using the provided screws or double-sided tape.
3. Route the rear camera cable to the front dashcam unit. Ensure the cable is neatly tucked away and does not interfere with vehicle operations.
4. Connect the rear camera cable to the AV port on the main dashcam unit.

4.3. Power Connection and SD Card Insertion

1. Insert the provided 64GB Micro-SD card into the dashcam's SD card slot. Ensure it is inserted correctly until it clicks into place.
2. Connect the USB Car Charger (with GPS module) to your vehicle's cigarette lighter socket.
3. Connect the Type-C end of the power cable to the Type-C port on the dashcam.
4. Route the power cable neatly along the edges of your windshield and dashboard to avoid obstruction.

3.16 Inch Screen

The front lens can be adjusted up and down



Rear Camera Image Mirror Filp



Remove the red film to attach it to the windscreen



Details the 3.16-inch display, the adjustable front camera lens, and the mirror image function for the rear camera. It also shows the method for attaching the dashcam to the windscreen using the adhesive mount.

5. OPERATING INSTRUCTIONS

5.1. Basic Operation

- **Power On/Off:** The dashcam will automatically power on and begin recording when your vehicle starts. It will power off automatically when the vehicle is turned off.

- **Screen Display:** The 3.16-inch IPS touch screen displays live footage from the front and rear cameras. You can switch views or access settings via the touch interface.

5.2. WiFi and App Control

The dashcam features built-in WiFi for seamless connection to your smartphone via a dedicated app.

1. **Download the App:** Scan the QR code provided in the manual or on the dashcam screen, or visit <https://www.6zhentan.com/app/d0001/index.html> to download the Vtopek dashcam app.
2. **Connect to WiFi:** On your dashcam, enable WiFi. On your smartphone, go to WiFi settings and connect to the dashcam's WiFi network (SSID and password usually displayed on the dashcam screen).
3. **App Functions:** Once connected, use the app to:
 - View live video feed.
 - Play back recorded videos.
 - Download video files to your phone.
 - Share recordings.
 - Adjust dashcam settings.

WiFi Connection & APP Control



View



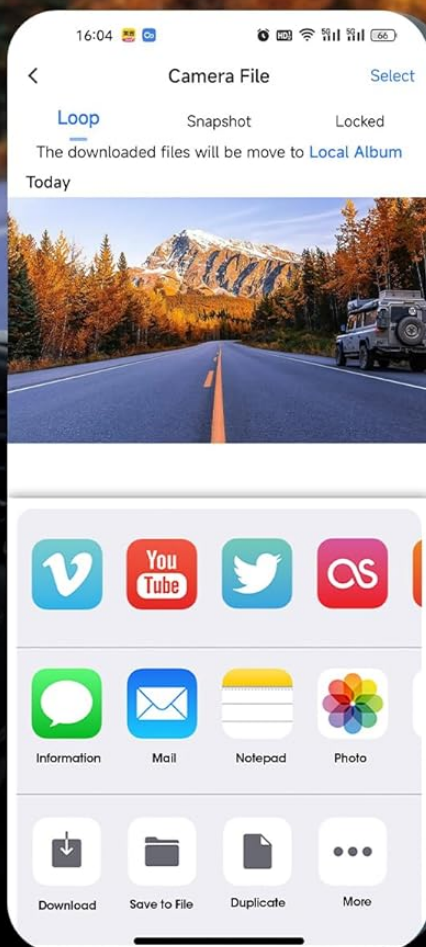
Playback



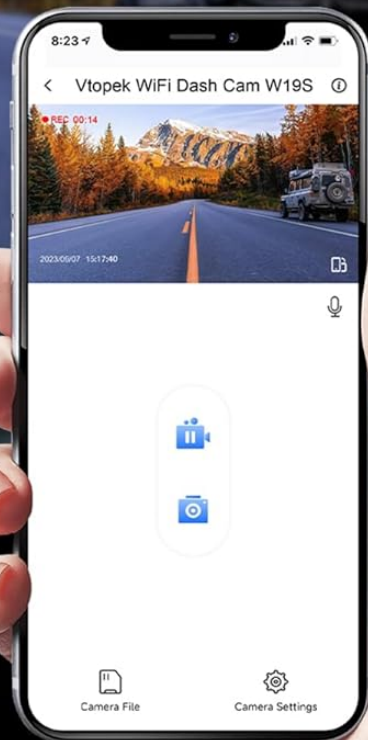
Share



Download



Easily download & share



This image illustrates the dashcam's WiFi connectivity and mobile application control. It shows how users can view live footage, play back recorded videos, share content, and download files directly to their smartphone via the dedicated app. A QR code for app download is also visible.

5.3. GPS Functionality

The integrated GPS module records important driving data.

- **Data Recording:** The GPS records your vehicle's speed, date, time, and geographical location in real-time.
- **Viewing Data:** This information can be viewed when playing back videos through the mobile app or a compatible PC player, which will display your route on a map alongside the video.

Built-in GPS

Records driving speed and travelling routes.



The GPS dash camera records the driving trajectory and speed accurately for you to view through phone or computer late.

Highlights the integrated GPS functionality of the dashcam, which records driving speed and travel routes. The image shows how this data can be viewed on a smartphone app or a computer playback software, displaying the vehicle's trajectory on a map.

5.4. Parking Monitor (24H)

For continuous surveillance when your vehicle is parked, the 24-hour parking monitor feature can be activated.

- **Activation:** This feature requires a separate hardwire kit (ASIN: B0C7BFXM3C) to provide continuous power to the dashcam when the vehicle is off.
- **Functionality:** Once activated, the dashcam will automatically start recording if it detects motion or impact while parked.

5.5. G-Sensor

The built-in G-sensor detects sudden movements or impacts.

- **Automatic Locking:** In the event of a collision or sudden braking, the G-sensor will automatically lock the current video segment, preventing it from being overwritten by loop recording.
- **Sensitivity:** The G-sensor sensitivity can usually be adjusted in the dashcam settings (e.g., Low, Medium, High). A 'Low' setting is often recommended to avoid unnecessary locking of files due to minor bumps.

5.6. Loop Recording

The dashcam records continuously in short segments.

- **Continuous Recording:** When the memory card is full, the dashcam will automatically overwrite the oldest unlocked video files to continue recording.
- **Segment Length:** Loop recording segments are typically 1, 3, or 5 minutes long, configurable in the settings. A 3-minute segment is often recommended.

24H Parking monitor



Need to connect the hardwire kit. (ASIN:B0C7BFXM3C)

G-sensor



Loop Recording



Explains the 24-hour parking monitoring feature (requires hardwire kit), the G-sensor which automatically locks footage upon impact, and the continuous loop recording function that overwrites older files.

6. SPECIFICATIONS

Feature	Specification
Brand	Vtopek

Feature	Specification
Model Name	W19S
Screen Size	3.16 Inches (IPS Touch Screen)
Connectivity Technology	Type-C, Wi-Fi
Special Features	App Control, Integrated GPS, Parking Monitor, Night Vision, Integrated Wi-Fi
Compatible Devices	Smartphone
Battery Composition	Lithium Polymer
Video Recording Resolution	Front: 2160p (4K), Rear: 1080p
Field of View	Front: 170°, Rear: 140°
Included Components	64GB Memory Card, Smartphone App, GPS Module, Suction Cup Mount
Mounting Type	Windshield Mount
Control Method	Application
Product Dimensions	2P x 5L x 3H centimeters

7. MAINTENANCE

- **Cleaning:** Use a soft, dry cloth to clean the dashcam lens and screen. Avoid using abrasive cleaners.
- **SD Card Formatting:** It is recommended to format the Micro-SD card regularly (e.g., once a month) to ensure optimal performance and prevent data corruption. This can usually be done through the dashcam's settings menu.
- **Firmware Updates:** Check the Vtopek website or app periodically for any available firmware updates to improve performance and add new features.
- **Temperature:** Avoid exposing the dashcam to extreme temperatures for extended periods, as this can affect battery life and device performance.

8. TROUBLESHOOTING

- **Dashcam not powering on:** Ensure the power cable is securely connected to both the dashcam and the car charger, and that the car charger is properly inserted into the cigarette lighter socket. Check if the vehicle's power outlet is functioning.
- **Recording issues (e.g., stops recording, corrupted files):** Format the SD card. Ensure the SD card is a high-speed Class 10 or U3 card. Replace the SD card if issues persist.
- **GPS not working/no signal:** Ensure the USB car charger with the integrated GPS module is used. Position the dashcam where it has a clear view of the sky.
- **WiFi connection problems:** Ensure WiFi is enabled on the dashcam and your smartphone. Double-check the WiFi password. Try restarting both the dashcam and your phone.
- **Screen freezing/unresponsive:** Use a thin object (like a paperclip) to press the reset button (if available) or disconnect and reconnect the power.

- **Rear camera not displaying:** Check the connection of the rear camera cable to the main unit. Ensure the cable is not damaged.

9. WARRANTY AND SUPPORT

Vtopek offers comprehensive support for your dashcam.

- **Warranty:** The product comes with a 1-year manufacturer's warranty.
- **Technical Support:** Lifetime technical support is provided.
- **Contact:** For any questions or assistance, please contact professional customer service via email at jenny@jansite.cn.

LIFETIME
Technical Support



Professional
Customer Service




1-Year
Warranty



E-mail
jenny@jansite.cn

Information regarding Vtopek's customer support, highlighting professional service, a 1-year warranty, and the contact email address for technical assistance.

Related Documents - W19S

	<p>Vtopek USB HD DVR Operation Manual: Fourth-Generation Vehicle-Mounted APK Installation & Troubleshooting</p> <p>Comprehensive operation manual for the Vtopek USB HD DVR with Fourth-Generation Vehicle-Mounted APK. Includes installation guide, troubleshooting tips, and warranty information for Android car systems.</p>
---	--



[Vtopek USB HD DVR Operation Manual: Fourth-Generation Vehicle-Mounted APK Installation & Troubleshooting](#)

Comprehensive operation manual for the Vtopek USB HD DVR with Fourth-Generation Vehicle-Mounted APK. Includes installation guide, troubleshooting tips, and warranty information for Android car systems.