

## POLONO P31S

# POLONO P31S Label Maker User Manual

Model: P31S | Brand: POLONO

## INTRODUCTION

The POLONO P31S is a portable thermal label maker designed for efficient and high-quality label printing without the need for ink or toner. Its compact size and Bluetooth connectivity make it ideal for various organizational tasks at home, school, or office. This manual provides detailed instructions for setting up, operating, and maintaining your P31S label maker.



The POLONO P31S Label Maker, shown with its companion mobile application and examples of printed labels.

## PACKAGE CONTENTS

---

Upon unboxing your POLONO P31S Label Maker, please ensure all the following items are included:

- 1 x P31S Label Maker
- 1 x Label Maker Tape (pre-installed or included separately)
- 1 x USB Cable (Type-C)
- 1 x User Manual
- 1 x Cue Card



Official unboxing video for the POLONO P31S Label Maker, detailing all included components.

## PRODUCT FEATURES

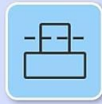
---

- **Compact and Portable:** Designed for single-hand use, easily fits in a pocket or bag. Dimensions: 4 x 1.5 x 2.3 inches.
- **Inkless Thermal Printing:** Utilizes thermal technology, eliminating the need for ink or toner.
- **High Resolution:** Prints at 203dpi for clear and crisp labels.
- **Built-in Cutter:** Features an integrated cutting knife for neat label separation.
- **Rechargeable Battery:** Equipped with a durable built-in Lithium Polymer battery.
- **Bluetooth Connectivity:** Connects wirelessly to Android and iOS devices (iOS 13 or above). Not compatible with computers.
- **Versatile Label Creation:** Supports printing of various texts, numbers, graphics, symbols, logos, barcodes, and QR codes through the companion app.

# Easy to Carry Anywhere



High Speed  
30mm/s



Built in  
Cutter



Type-C  
Charging



Easy  
to Use



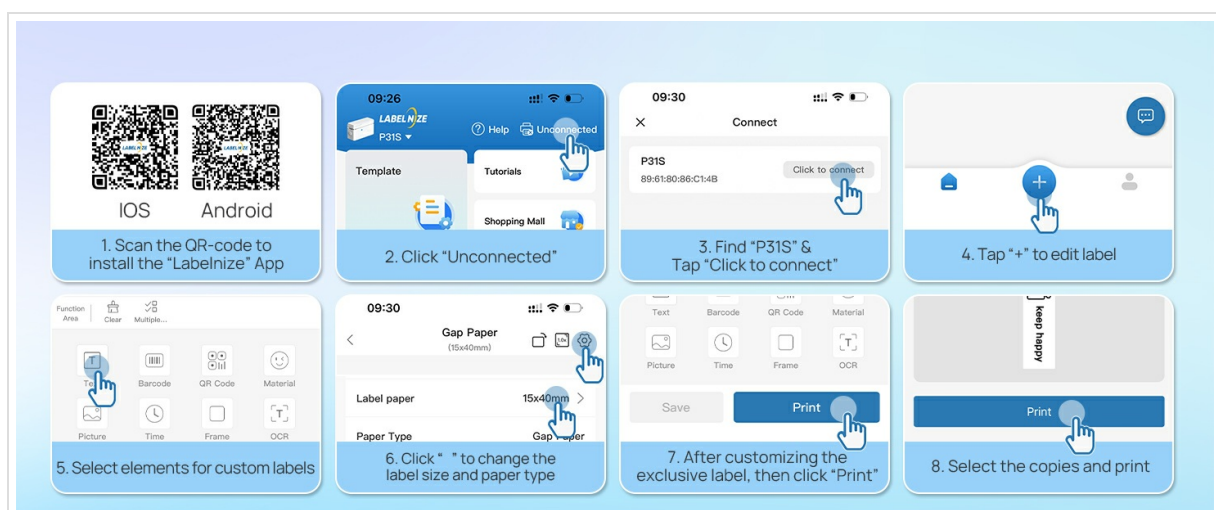
High Definition  
203 dpi



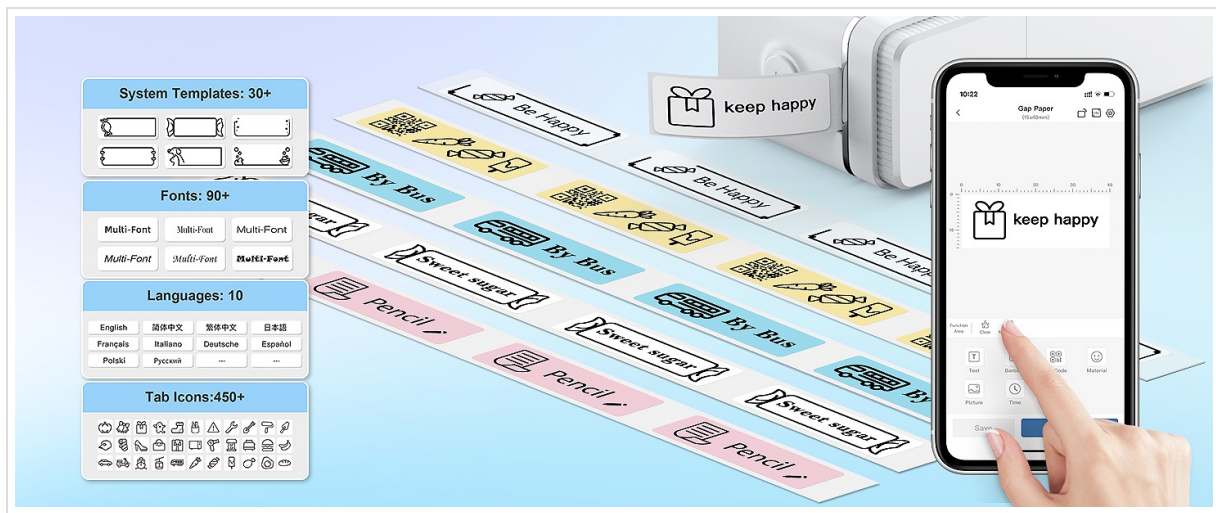
No Ink



The compact design of the POLONO P31S Label Maker, highlighting its portability with dimensions.



Using genuine POLONO thermal label paper is recommended for best print quality. The tape features chip technology for proper recognition.



The label maker includes a built-in cutting knife. After printing, press the designated button to neatly cut the label.

## SETUP GUIDE

### 1. Download the Labelnize App

The Labelnize app is essential for creating and printing labels. You can download it via two methods:

- **Scan QR Code:** Use your smartphone's camera to scan the QR code provided in the quick start guide or on the product packaging.
- **Search App Store:** Search for "Labelnize" directly in the Apple App Store (for iOS devices) or Google Play Store (for Android devices).



Instructions for downloading the Labelnize app and initiating the Bluetooth connection process.

### 2. Install Label Tape

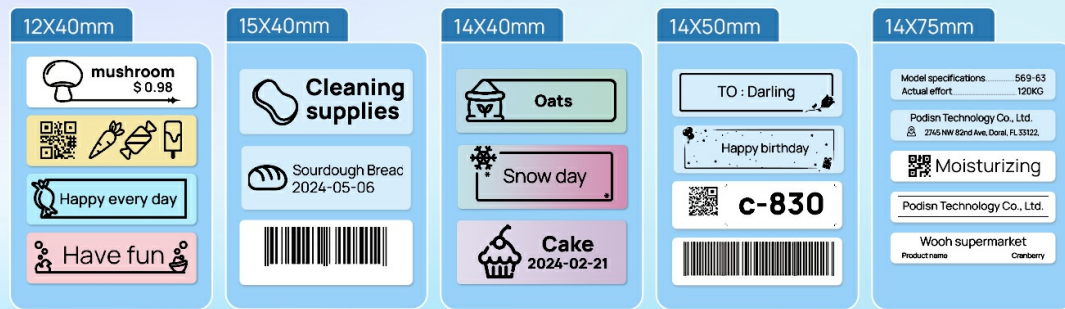
Follow these steps to properly install the label tape:

1. Click the unlock button on the side of the label maker to open the paper cover.
2. Install the label tape into the paper bin. Ensure the printed content page faces up.
3. Leave approximately 0.2 inches of paper extending outside the machine and close the cover.
4. Press and hold the power button for 3 seconds to turn on the device. Click the power button once to calibrate the paper feed.

*Note: Do not tear or damage the green non-adhesive on the back of the label tape, as it will affect the printing effect.*



## Supports Labels of Various Sizes



Step-by-step guide for loading the label paper into the P31S Label Maker.

### 3. Bluetooth Connection

Connect your P31S Label Maker to your smartphone via Bluetooth:

- Ensure Bluetooth is enabled on your smartphone.
- Open the Labelnize app.
- Tap "Unconnected" or "Connect Now" within the app to search for available devices.
- Select "P31S" from the list of found devices to establish the connection.



Video tutorial demonstrating how to connect the POLONO P31S Label Maker to an Android phone via Bluetooth using the Labelnize app.



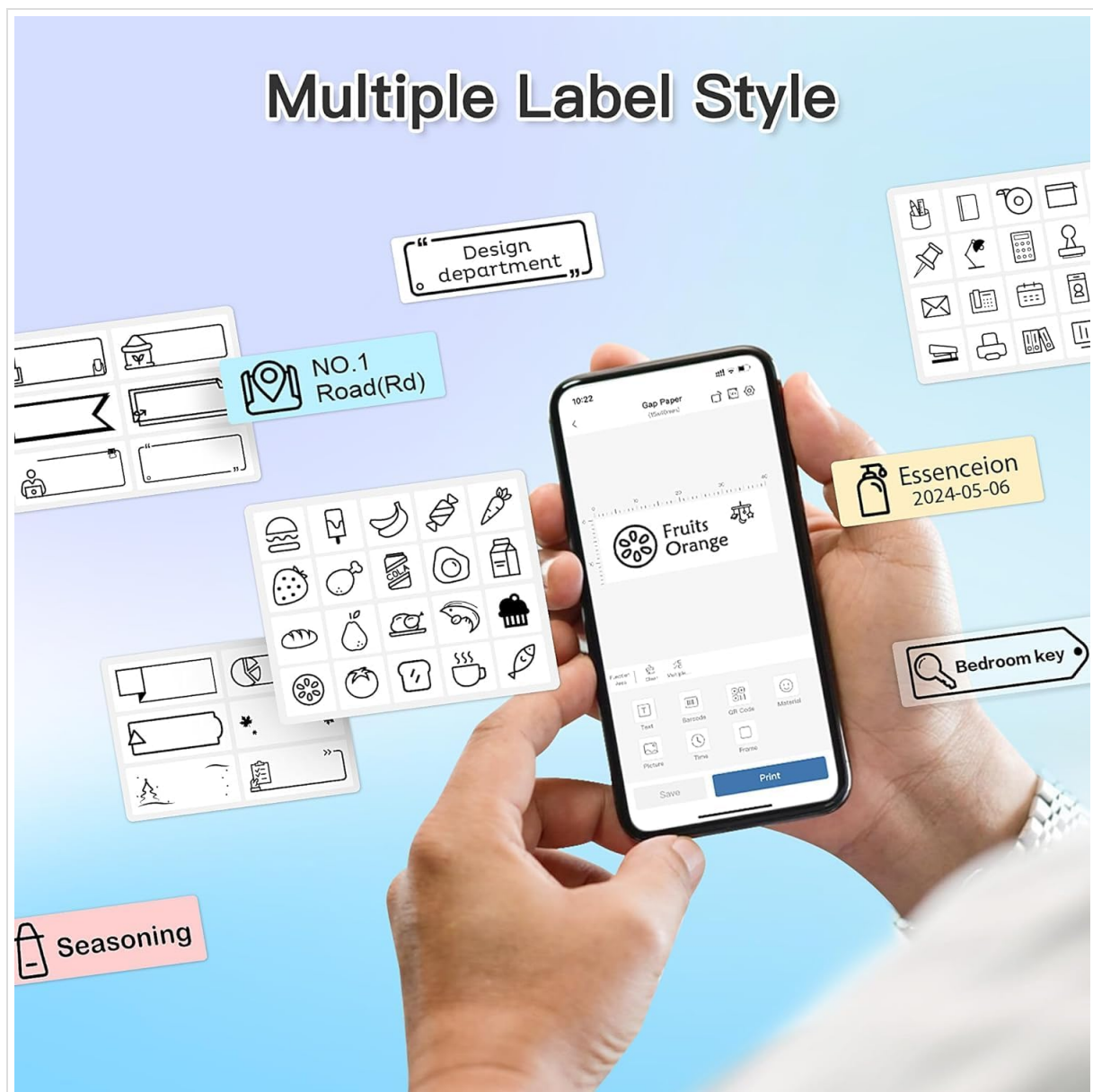
Video tutorial demonstrating how to connect the POLONO P31S Label Maker to an iOS phone via Bluetooth using the Labelnize app.

## OPERATING INSTRUCTIONS

### 1. Creating and Editing Labels

The Labelnize app offers extensive customization options:

- Choose from a large number of pre-designed templates and icons.
- Edit existing templates by double-clicking on text fields or elements.
- Create a blank label from scratch by tapping the "+" button.
- Customize text, numbers, graphics, symbols, logos, barcodes, and QR codes.
- Adjust fonts, sizes, styles, and add borders or frames.



The Labelnize app interface, showcasing a variety of templates and icons for label design.

## Using Genuine Label Maker Tape Can Print with Good Quality

### POLONO Genuine P31S Label Maker Tape

⚠ Please do not tear or destruct the green sticker, otherwise it will affect the printing effect.

Chip Technology

### Equipped with Built-in Cutting Blade

⚠ Do not pull the label out directly, please press the cutting blade to cut.

Polono

Customize your labels with various fonts, borders, and icons within the Labelnize app.

## 2. Printing Labels

Once your label design is complete:

1. Tap the "Print" button in the app.

- 2. Adjust the number of copies if needed.
- 3. Confirm the print settings and tap "Print" again to send the job to the label maker.

*Note: Do not pull the label out directly after printing. Always use the built-in cutting button for neat separation.*



Video showcasing the application of labels for organizing various items, demonstrating the versatility of the P31S Label Maker.

## MAINTENANCE

To ensure the longevity and optimal performance of your POLONO P31S Label Maker, follow these maintenance guidelines:

- **Cleaning:** Regularly clean the print head with a soft, lint-free cloth. Avoid using harsh chemicals or abrasive materials.
- **Storage:** Store the label maker in a cool, dry place away from direct sunlight and extreme temperatures.
- **Battery Care:** Charge the device regularly, even if not in frequent use, to maintain battery health. Avoid fully discharging the battery for extended periods.
- **Label Tape:** Use only genuine POLONO thermal label paper for best results and to prevent damage to the print head.

## TROUBLESHOOTING

If you encounter issues with your P31S Label Maker, try the following common troubleshooting steps:

- **No Power:** Ensure the device is charged. Connect it to a power source using the provided USB cable.
- **Connection Issues:** Verify Bluetooth is enabled on your phone and within the Labelnize app. Try restarting both the label maker and your phone.
- **Poor Print Quality:** Check if you are using genuine POLONO thermal label paper. Ensure the label tape is installed correctly with the print side facing up. Clean the print head if smudges or lines appear.
- **Paper Jam/Feeding Issues:** Open the paper cover and ensure the label tape is not tangled or misaligned. Make sure no foreign objects are obstructing the paper path.
- **App Not Responding:** Close and reopen the Labelnize app. If the issue persists, try reinstalling the app.

## SPECIFICATIONS

Feature	Detail
Model Name	P31S
Brand	POLONO
Printing Technology	Thermal
Connectivity Technology	Bluetooth
Max Print Resolution	203 dpi

Feature	Detail
Compatible Devices	Smartphones (iOS 13 or later, Android)
Product Dimensions	4 x 1.5 x 2.3 inches
Item Weight	8.8 ounces
Power Source	Battery Powered (1 Lithium Polymer battery included)

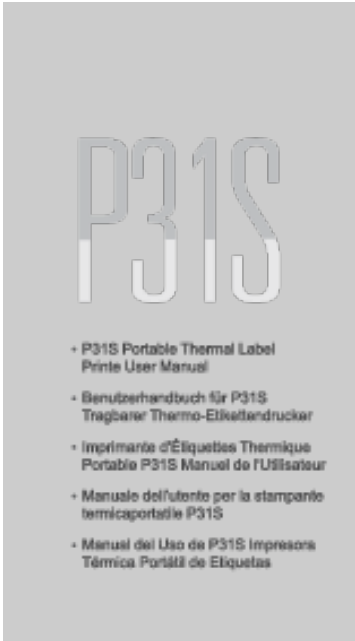
## WARRANTY AND SUPPORT

For warranty information or further technical assistance, please refer to the official POLONO website or contact their customer support. The full user manual in PDF format is also available for download from the product's Amazon page or the Labelnize app support section.

[Download User Manual \(PDF\)](#)

© 2024 POLONO. All rights reserved.

### Documents - POLONO – P31S



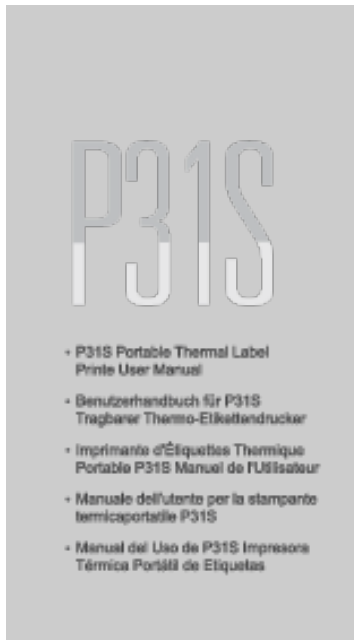
[\[pdf\]](#) User Manual

P31     Download Driver User manual polono P31 EN v 1717055887 cdn shopify s files 1 0595 9739 0033 |||

...

lang: score:20 filesize: 8.7 M page\_count: 22 document date: 2023-10-19





[\[pdf\]](#) User Manual

P31      Download Driver User manual polono P31 FR v 1717055893 cdn.shopify.com/files/1/0595/9739/0033/|||

...

lang: **score:20** filesize: 10.02 M page\_count: 23 document date: 2023-10-19



[\[pdf\]](#) User Manual

P31      Download Driver User manual polono P31 DE v 1717055892 cdn.shopify.com/files/1/0595/9739/0033/|||

...

lang: **score:20** filesize: 9.73 M page\_count: 23 document date: 2023-10-19



[\[pdf\]](#) Test Report Label

FCC PART 15 news Test Report BT LE ZHUHAI NELKO TECHNOLOGY CO LTD P31S 2A9RA 2A9RAP31S p31s

Page 1 of 34 FCC ID:2A9RA-**P31S** Report No.: LCSA08264195EB FCC TEST REPORT For ZHUHAI NELKO TECHNOLOGY CO.,LTD. Label Maker Test Model: **P31S** Prepared for Address : ZHUHAI NELKO TECHNOLOGY CO.,LTD. : RM 325, 3/F, FORMING WORKSHOP BLDG A , NO. 8, PINGDONG 2ND ROAD, NANPING, ZHUHAI, GUANGDONG, CHI...

lang:en score:18 filesize: 1.43 M page\_count: 34 document date: 2024-09-14



[\[pdf\]](#) Test Report Label

Shenzhen Sunspring Electronics Co Ltd Keyboard OJWCG107C Violet Wang Test Report BT ZHUHAI NELKO TECHNOLOGY CO LTD P31S 2A9RA 2A9RAP31S p31s

Page 1 of 37 FCC ID:2A9RA-**P31S** Report No.: LCSA08264195EA FCC TEST REPORT FOR ZHUHAI NELKO TECHNOLOGY CO.,LTD. Label Maker Test Model: **P31S** Prepared for Address : ZHUHAI NELKO TECHNOLOGY CO.,LTD. RM 325, 3/F, FORMING WORKSHOP BLDG A , NO. 8, : PINGDONG 2ND ROAD, NANPING, ZHUHAI, GUANGDONG, CHI...

lang:en score:17 filesize: 1.44 M page\_count: 37 document date: 2024-09-14



[POLONO P31S Portable Thermal Label Printer User Manual](#)

Comprehensive user manual for the POLONO P31S Portable Thermal Label Printer, covering setup, operation, maintenance, and troubleshooting.


lang:en score:16 filesize: 7.6 M page\_count: 20 document date: 2024-02-22

Product specification

Quick Reference Data

Frequency	Antenna module on the system board	
	2.4GHz	
Ant. Port Input Pwr. (dBm)	0 (Typ. BT class 2 output power)	
Tot. Rad. Pwr. (dBm)	-2.3 (input pwr - loss pwr)	
Peak EIRP(dBm)	1.3	
Directivity (dBi)	1 (all direction antenna)	
Efficiency (dB)	-2.3 (58.5%)	
Gain (dBi)	1.3 (Peak Gain XY plane)	
Maximum Power (dBm)	1.3 (XY plane)	
Minimum Power (dBm)	-4(XY plane)	
Avg. Power (dBm)	-6.5(XY plane)	
Max/Min Ratio (dB)	5.5(XY plane)	
Min/Avg Ratio (dB)	1.8(XY plane)	
Min/Avg Ratio (dB)	-3.5(XY plane)	
Average Gain (dB)	-6.5 (Avg Gain XY plane)	
All the technical data and information contained herein are subject to change without prior notice		

Antenna Layout on the Module board



Antenna Gain

Gain Table					
Unit in dBi @2.4GHz	XY plane		XZ plane		YZ plane
	Peak	Avg	Peak	Avg	
					Efficiency

[pdf] Specifications Declaration of Conformity Diagram Test Report Label

Microsoft Word Antenna Product Specification 3 doc Administrator ATN Test Report Mapleprint Inc P31S

Label Maker 2A4KN 2A4KNP31S p31s

Product specification Quick Reference Data Frequency Antenna module on the system board 2.45GHz\*1 Ant. Port Input Pwr. dBm 0 Typ. BT class 2 output power Tot. Rad. Pwr. dBm -2.3 Input pwr loss pwr Peak EIRP dBm 1.3 Directivity dBi 1 all direction antenna Efficiency dB -2.3...

lang:en score:15 filesize: 680.57 K page\_count: 6 document date: 2023-11-20