

ComMarker ComMarker 5 in 1 Multi Functional Rotary

ComMarker 5 in 1 Multi Functional Rotary Instruction Manual

Brand: ComMarker | Model: ComMarker 5 in 1 Multi Functional Rotary

PRODUCT OVERVIEW

The ComMarker 5 in 1 Multi Functional Rotary is a versatile accessory designed for laser engravers, offering a wide range of application scenarios. It is engineered to engrave objects of various sizes and shapes with high precision. Featuring a 2.4A current high-torque motor, it can securely hold heavier objects, achieving an engraving accuracy of 0.1 mm. This rotary attachment is suitable for approximately 90% of daily use cylinders and spheres, enabling the creation of unique items such as wedding wine glasses, balls, tumblers, and custom jewelry. Its 180-degree angle adjustment allows for processing larger-sized objects in different orientations. Additionally, it includes a support column to stabilize various cylindrical engraving objects like cans and round wood sticks.

PACKING LIST

Upon unboxing, verify that all components listed below are present and in good condition. The packaging is designed to protect the contents during transit.

PACKING LIST

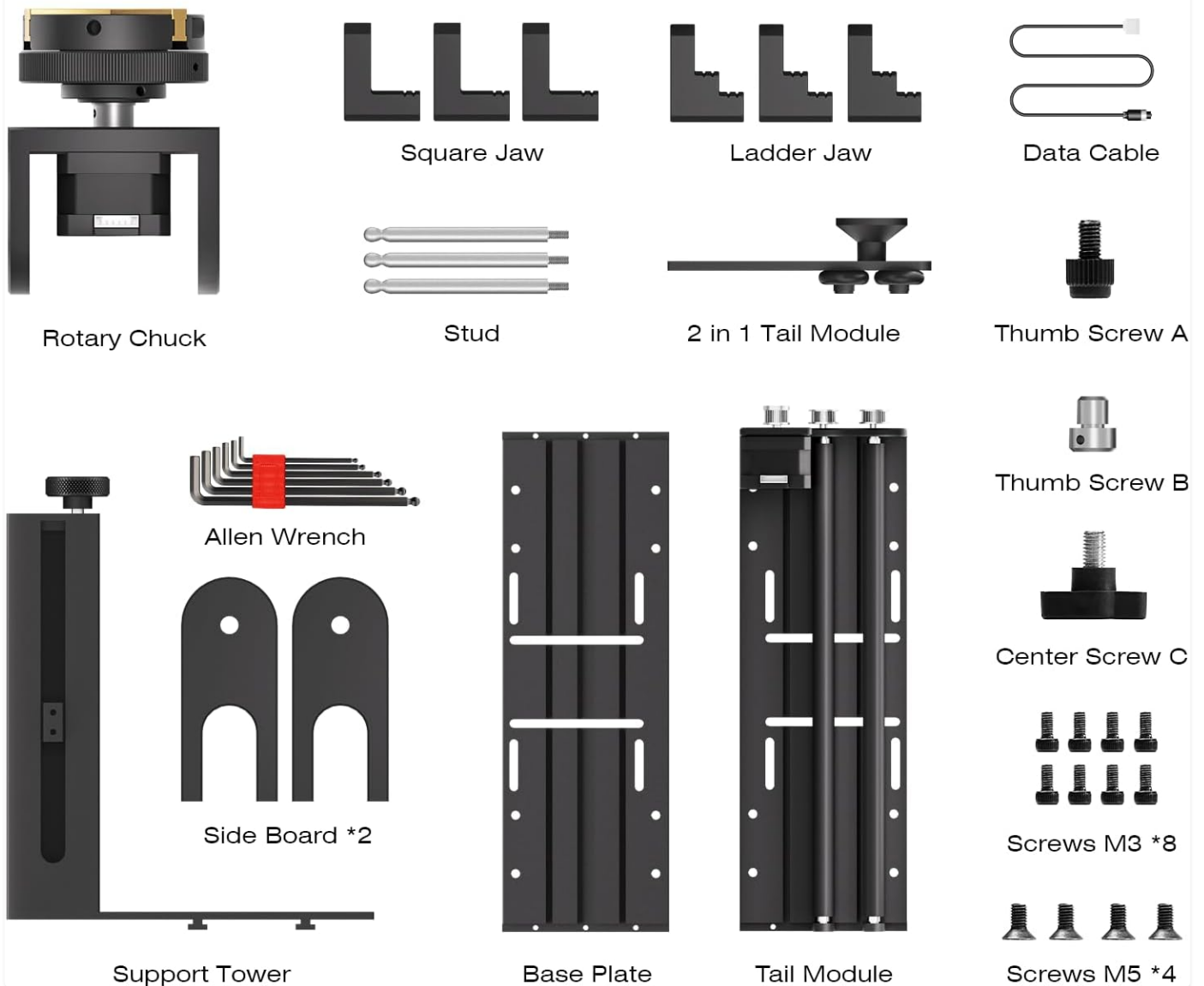


Figure 1: Detailed view of the components included in the ComMarker 5 in 1 Multi Functional Rotary package. This includes the Rotary Chuck, Square Jaw, Ladder Jaw, Data Cable, Studs, 2-in-1 Tail Module, Thumb Screws (A, B, C), Allen Wrench set, Side Boards, Base Plate, Tail Module, and various M3 and M5 screws.

- Rotary Chuck
- Square Jaw (set)
- Ladder Jaw (set)
- Data Cable
- Studs (set)
- 2-in-1 Tail Module
- Thumb Screw A
- Thumb Screw B
- Center Screw C
- Allen Wrench Set
- Side Board (2 pieces)
- Base Plate
- Tail Module

- Screws M3 (8 pieces)
- Screws M5 (4 pieces)

SETUP

The ComMarker 5 in 1 Multi Functional Rotary is designed for straightforward assembly. Follow these steps to set up your device:

Assembly of Machine

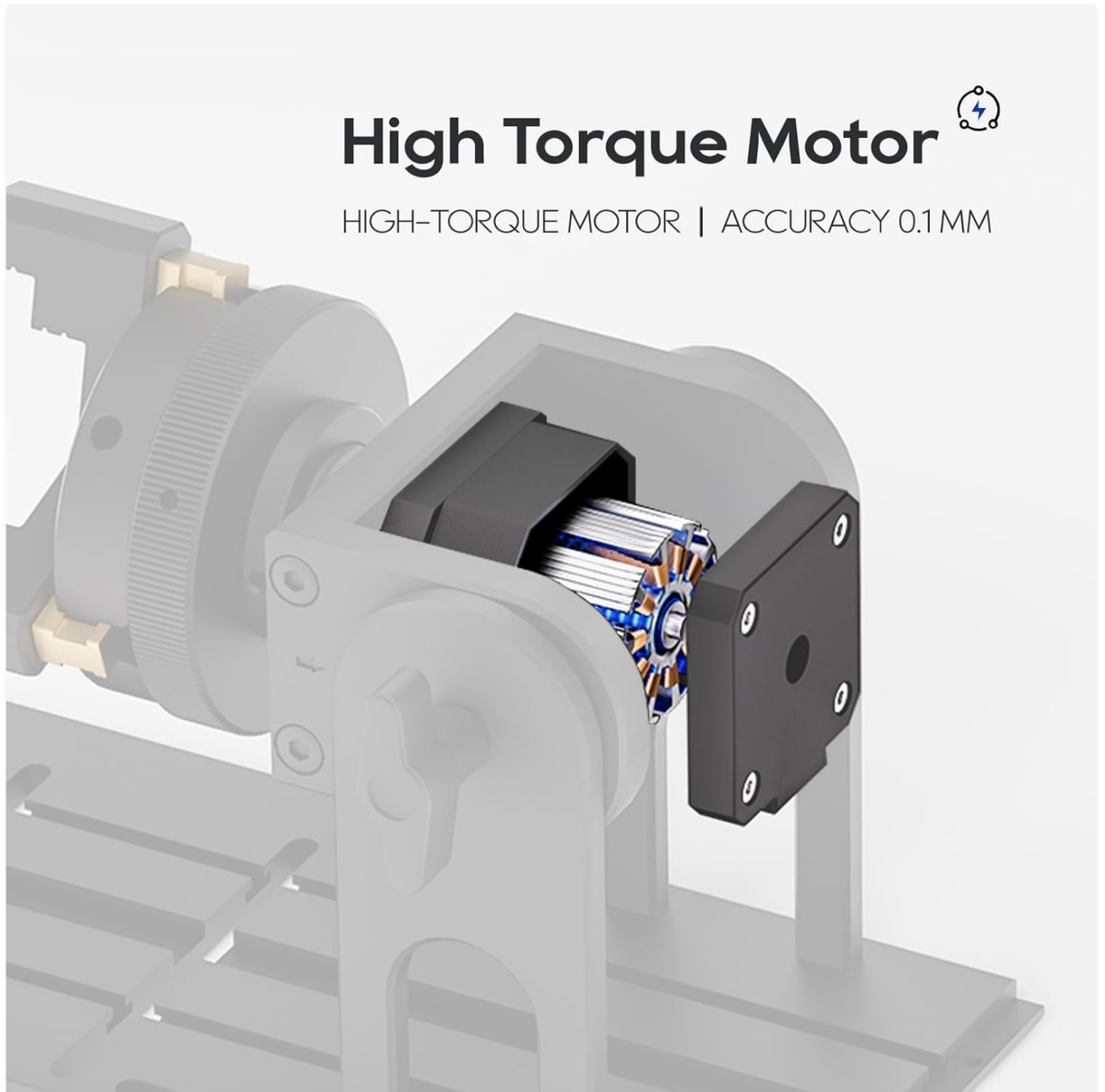


Figure 2: The main components of the rotary attachment laid out for assembly.

1. Place the parts on a stable table surface.
2. Fix the connection part with the provided Allen screw.
3. Connect the motor wires properly, ensuring a secure connection.
4. Put the motor into the main case and secure it.

Software Installation and Operation

The ComMarker Q1 Laser Engraver and Cutter supports Lightburn software and EzCad2 software (included). Ensure you install the necessary drivers before operating the machine. The machine should be powered on, the emergency button not pressed, the key switch open, and the data cable connected for proper driver installation and software operation.

Your browser does not support the video tag.

Video: A detailed demonstration of the ComMarker Q1 Laser Engraver and Cutter, including setup and operation. This video highlights the ease of assembly and software integration.

To install drivers, right-click "This PC" and select "Manage". Navigate to "Device Manager" and locate "USBMLCV2" or "Unknown Device" under "Other devices" or "Universal Serial Bus devices". Select "Browse my computer for drivers" and follow the on-screen instructions. Once the drivers are installed, open the software (Lightburn or EzCad2) from the provided USB folder. It is recommended to select the text test first to adjust the focus by pressing the up or down button to lift or lower the laser head until the light beam is clear and focused.

OPERATING INSTRUCTIONS

The 5 in 1 Multi Functional Rotary is designed for ease of use with various materials. Place the object securely on the work table or within the rotary chuck. Use the software to define your marking area and initiate the engraving process.

Material Compatibility

This device is compatible with a wide range of materials, including but not limited to:

- Glass
- Stainless Steel
- Wood
- Acrylic
- Leather
- Granite
- Cork
- Non-woven Fabric
- Coated Metal
- Food items (e.g., eggs)
- Ceramics

PRODUCT SIZE

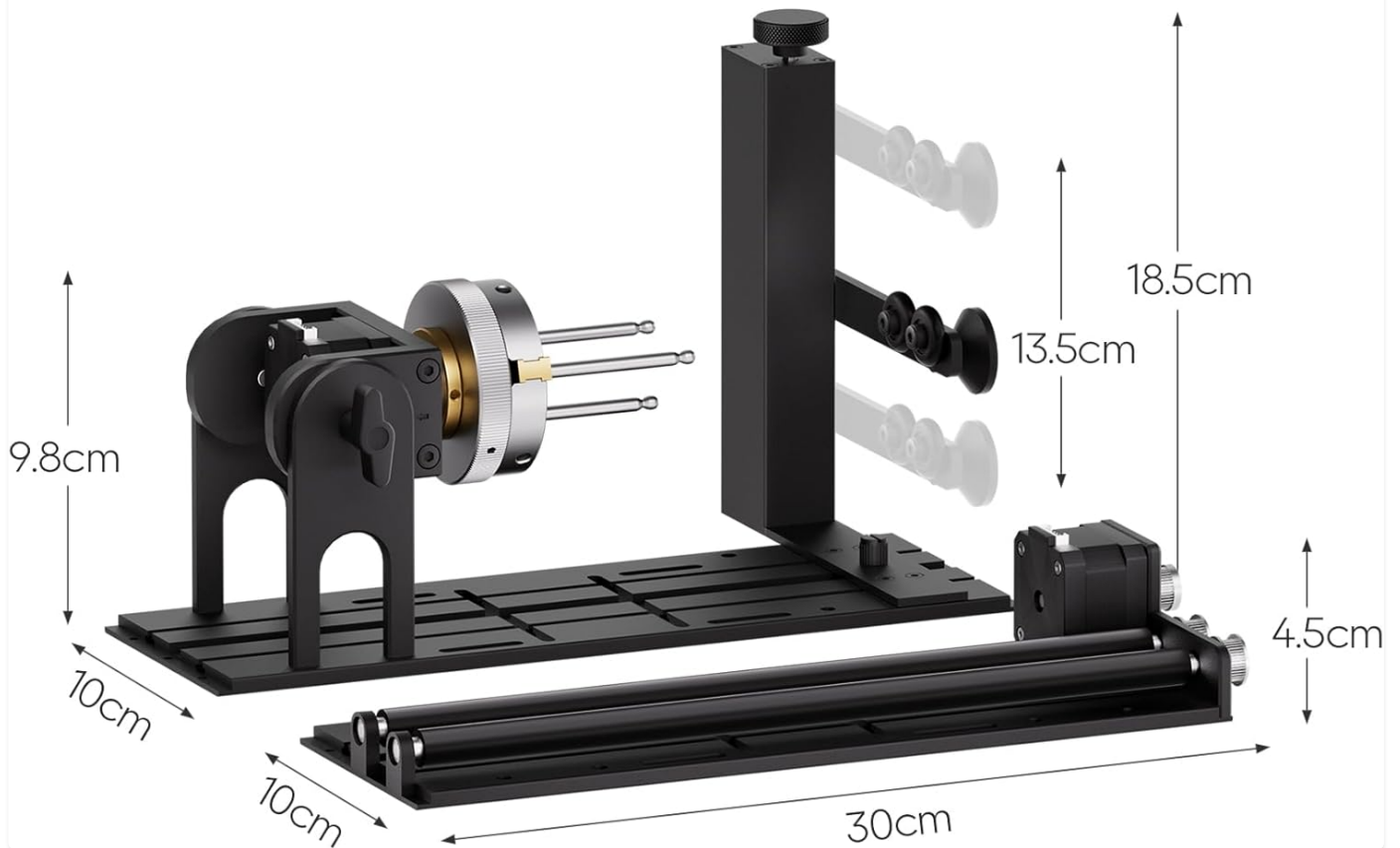


Figure 3: Visual examples of various items that can be customized using the rotary engraver, including rings, glasses, bracelets, mugs, stainless steel cups, tumblers, goblets, dog bowls, cat bowls, rolling pins, golf balls, and pens.

Customization and Applications

The 5-in-1 multi-functional rotary allows for diverse applications, from intricate ring interior engraving to large irregular objects. The 180-degree precise angle adjustment provides flexibility for various object sizes and shapes.

More Choice of Jaws

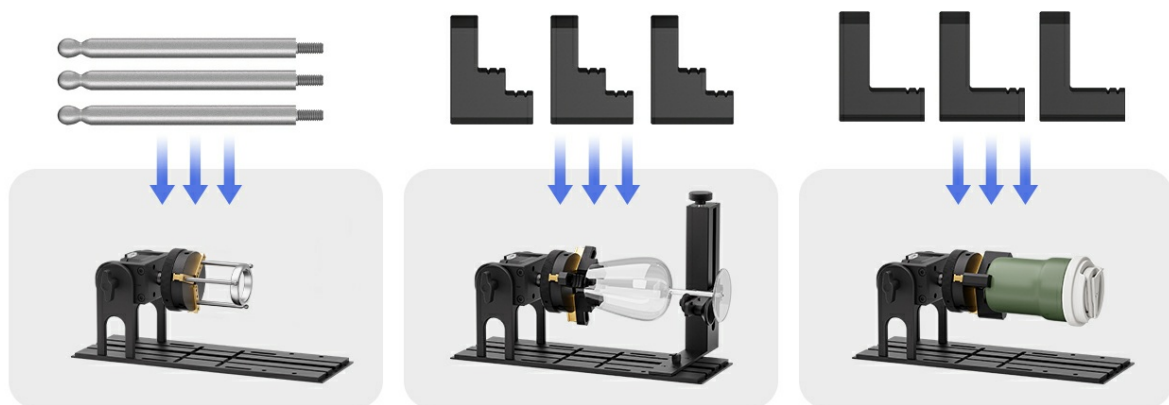


Figure 4: Illustration of the wide range of applications for the rotary attachment, including engraving on rings, chuck rotary, irregular objects, spheres, and bracelets.

The high-torque motor (2.4A) ensures stability and precision, allowing for engraving accuracy down to 0.1 mm. The

support column further enhances compatibility, enabling stable engraving of cylindrical items like cans and round wood sticks.

MORE CHOICE OF JAWS



Figure 5: Different jaw options (studs, square jaws, ladder jaws) are available to accommodate various object shapes and sizes for engraving.

SAFETY INFORMATION

Always prioritize safety when operating the laser engraver. Wear the provided safety goggles to protect your eyes from the laser beam. Ensure the work area is well-ventilated to avoid inhaling fumes produced during engraving. Never look directly into the laser beam. Keep the emergency stop button accessible and be familiar with its operation. Always ensure the key switch is in the open position and the data cable is connected before starting any operation.



Figure 6: The ComMarker Q1 Laser Engraver unit, showing the key switch, emergency stop button, and power controls. Always ensure safety measures are followed during operation.

SPECIFICATIONS

Feature	Detail
Brand	ComMarker
Model	ComMarker 5 in 1 Multi Functional Rotary
Item Weight	6.89 pounds
Product Dimensions	12 x 8 x 7.3 inches
Working Area	11cm x 11cm
Wavelength	1064nm
Marking Speed	0-10000mm/s
Accuracy	0.01mm
Graphic Format Supported	AI/PLT/JPG/DXF.etc
System Supported	Window 7/8/10/11
Cooling Type	Air Cooling

Output Power	2W
Weight (KG)	5kg

TROUBLESHOOTING


If you encounter any issues with your ComMarker 5 in 1 Multi Functional Rotary, please refer to the troubleshooting section in the full manual. Common issues may include connectivity problems, software errors, or engraving inconsistencies. Ensure all cables are securely connected and the software is correctly installed. For persistent issues, contact ComMarker customer support.

WARRANTY AND SUPPORT

ComMarker products typically come with a manufacturer's warranty covering defects in materials and workmanship. For specific warranty details, product support, or technical assistance, please refer to the contact information provided in your product packaging or visit the official ComMarker website. The ComMarker team is always available to help with any questions you may have.

© 2024 ComMarker. All rights reserved.

Related Documents

	<p>ComMarker B4 Laser Marking Machine Manual</p> <p>This manual provides comprehensive instructions for operating the ComMarker B4 Laser Marking Machine, covering safety guidelines, product structure, assembly procedures, software installation and usage (EZCAD and Lightburn), rotary device operation, calibration, parameter settings, and frequently asked questions.</p>
---	--