

Grundig GIGL 622410

Grundig GIGL 622410 Wok Built-in Glass Hob User Manual

[Introduction](#) [Safety Information](#) [Product Overview](#) [Setup & Installation](#) [Operating Instructions](#)
[Instructions](#) [Maintenance & Cleaning](#) [Troubleshooting](#) [Specifications](#) [Warranty & Support](#)

1. INTRODUCTION

Thank you for choosing the Grundig GIGL 622410 Wok Built-in Glass Hob. This manual provides essential information for the safe and efficient installation, operation, and maintenance of your new appliance. Please read these instructions thoroughly before using the hob and keep them for future reference.

2. SAFETY INFORMATION

Your safety and the safety of others are paramount. This section contains important safety instructions. Failure to follow these instructions may result in fire, electric shock, serious injury, or death.

- **General Safety:** This appliance is intended for domestic use only. Do not use it for commercial purposes.
- **Children and Vulnerable Persons:** This appliance can be used by children aged 8 years and above and persons with reduced physical, sensory or mental capabilities or lack of experience and knowledge if they have been given supervision or instruction concerning use of the appliance in a safe way and understand the hazards involved. Children shall not play with the appliance. Cleaning and user maintenance shall not be made by children without supervision.
- **Installation:** Installation and service must be performed by a qualified installer, service agency, or the gas supplier. Ensure the appliance is correctly connected to the gas and electrical supply according to local regulations.
- **Ventilation:** Ensure adequate ventilation in the kitchen when the hob is in use.
- **Hot Surfaces:** The hob surface and surrounding areas become hot during use. Avoid touching hot surfaces. Use oven mitts or pot holders.
- **Flammable Materials:** Keep flammable materials (e.g., curtains, paper, aerosols) away from the hob.
- **Overheating:** Never leave cooking unattended, especially when cooking with oil or fat, as it can ignite.
- **Cleaning:** Always turn off the appliance and allow it to cool before cleaning.
- **Gas Leaks:** If you smell gas, immediately turn off the gas supply, open windows, and do not operate any electrical switches or appliances. Contact your gas supplier or a qualified technician.

3. PRODUCT OVERVIEW

The Grundig GIGL 622410 is a built-in glass hob featuring four gas burners, including a dedicated wok burner, designed for efficient and versatile cooking.



Figure 3.1: Top-down view of the Grundig GIGL 622410 built-in glass hob. This image shows the overall layout of the hob, including the four gas burners and the control knobs located on the right side of the white glass surface.

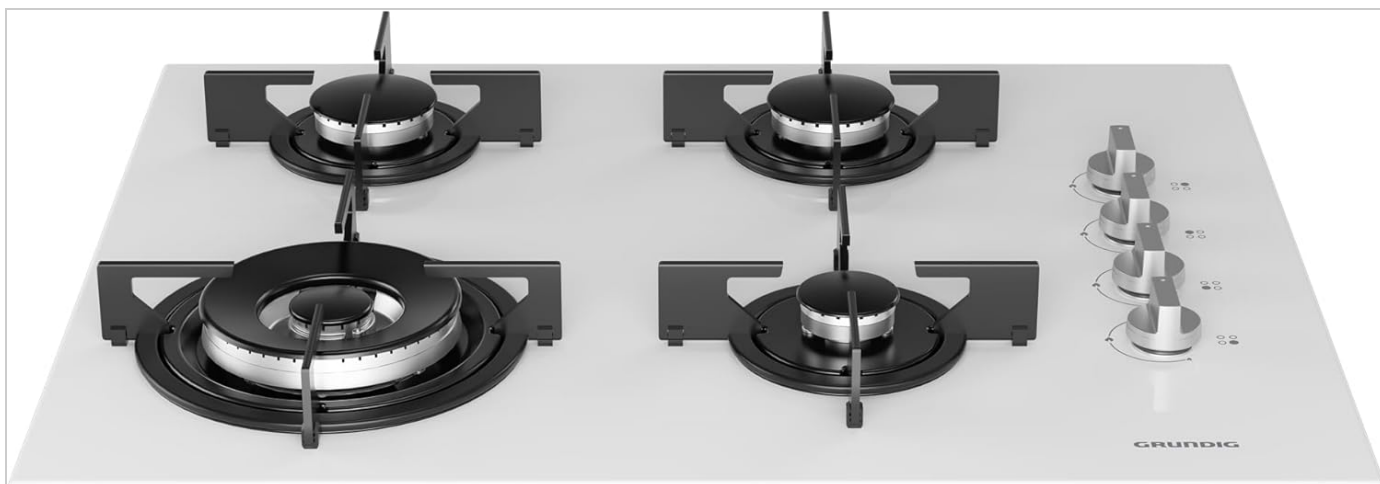


Figure 3.2: Angled top view of the Grundig GIGL 622410 built-in glass hob. This perspective provides a clearer view of the individual burner grates and the arrangement of the control knobs.



Figure 3.3: Close-up view of the control knobs. Each knob is clearly marked with symbols indicating flame intensity and ignition positions, allowing precise control over each burner.

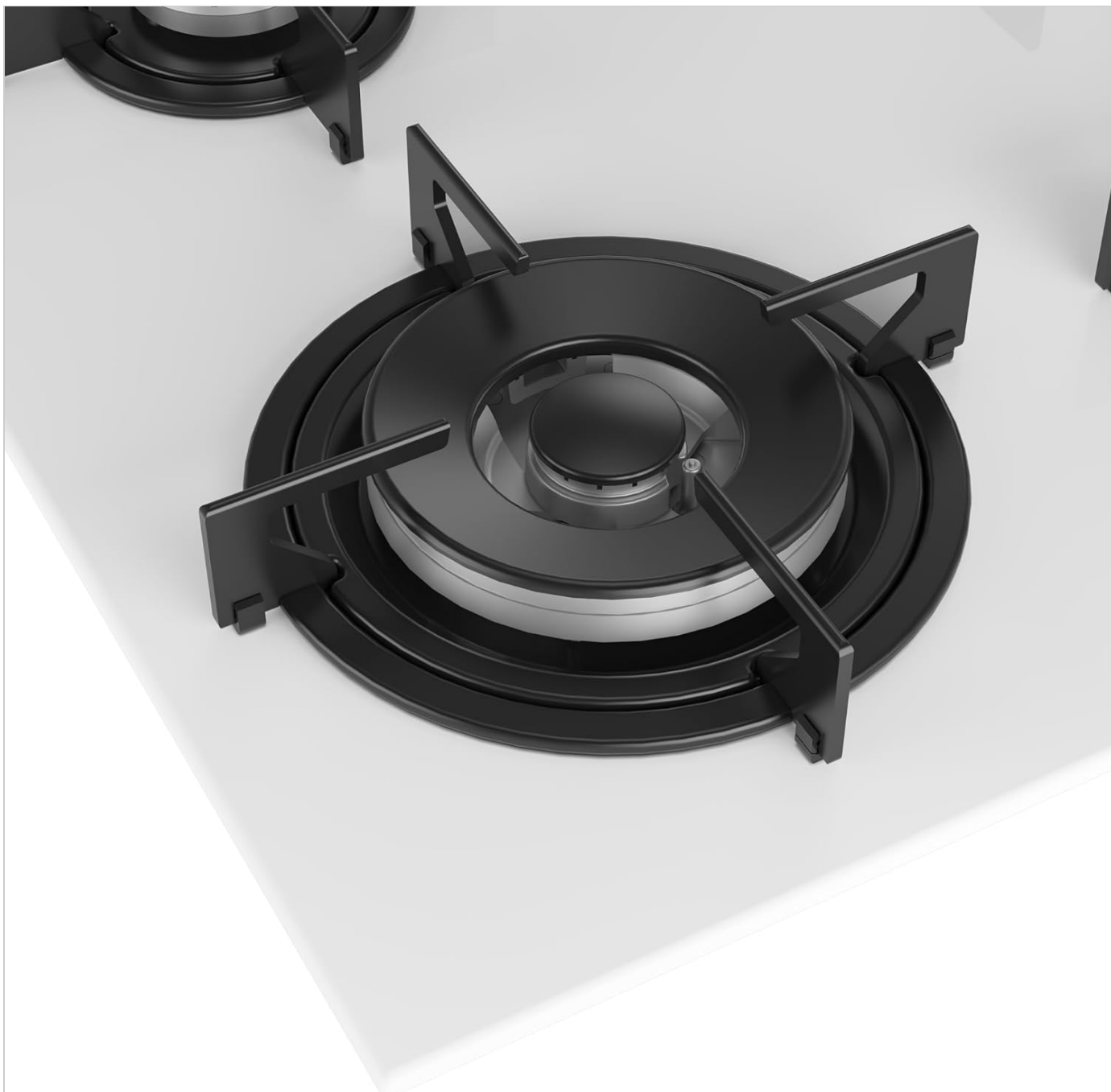


Figure 3.4: Close-up of a single gas burner. This image details the burner cap, flame spreader, and the sturdy cast-iron pan support, designed for stable cookware placement.

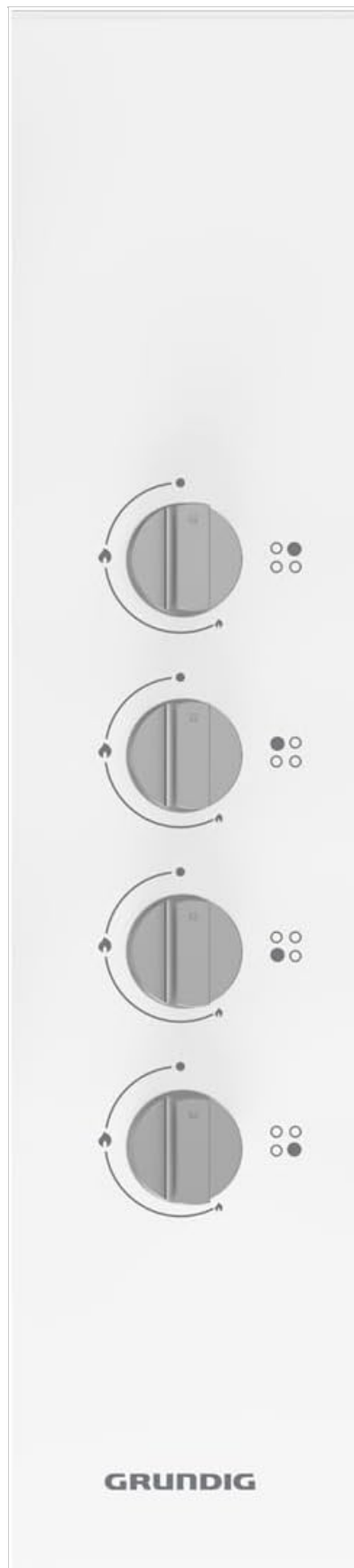


Figure 3.5: Vertical view of the control panel. This image provides a clear, straight-on view of all four control knobs, emphasizing their ergonomic design and the clear markings for operation.

Components:

- **Glass Surface:** Durable and easy-to-clean ceramic glass.
- **Gas Burners:** Four burners of varying sizes, including a powerful wok burner.
- **Pan Supports:** Sturdy grates for holding cookware securely.

- **Control Knobs:** Ergonomic knobs for flame adjustment and ignition.
- **Ignition System:** Integrated electronic ignition for easy startup.

4. SETUP AND INSTALLATION

Installation must be carried out by a qualified technician in accordance with all local and national regulations. Incorrect installation can lead to serious injury or damage.

4.1. Pre-Installation Checks

- Ensure the kitchen counter opening dimensions match the hob's requirements.
- Verify that the gas supply type (natural gas or LPG) matches the appliance's specifications. If conversion is needed, use the provided conversion kit and have it performed by a qualified technician.
- Check that the electrical supply (voltage and frequency) is compatible with the hob's requirements for ignition.
- Ensure adequate ventilation in the installation area.

4.2. Hob Placement

- Place the hob into the prepared cutout in the kitchen countertop.
- Secure the hob using the provided mounting clips and seals to prevent movement and protect against moisture.

4.3. Gas Connection

- Connect the hob to the gas supply using a flexible or rigid pipe approved for gas installations.
- Ensure all connections are tight and leak-free. Perform a leak test using soapy water; never use an open flame.
- Install a gas shut-off valve in an accessible location near the hob.

4.4. Electrical Connection

- Connect the hob's electrical cable to a grounded power outlet or junction box.
- Ensure the electrical connection is protected by a suitable fuse or circuit breaker.
- The electrical connection is primarily for the electronic ignition system.

5. OPERATING INSTRUCTIONS

This section explains how to safely and effectively use your Grundig GIGL 622410 hob.

5.1. Before First Use

- Remove all packaging materials and protective films from the hob.
- Clean the hob surface with a damp cloth and mild detergent.
- Ensure all burner components (burner caps, flame spreaders, pan supports) are correctly assembled.

5.2. Igniting a Burner

1. Place appropriate cookware on the pan support over the desired burner.
2. Push down the corresponding control knob and turn it counter-clockwise to the ignition position (usually marked with a flame symbol or asterisk).
3. Hold the knob down for a few seconds until the flame ignites and stabilizes. The electronic ignition will click during this process.

- Once the flame is stable, release the knob. If the flame goes out, repeat the process.

5.3. Adjusting Flame Intensity

- After ignition, turn the control knob further counter-clockwise to increase the flame (larger flame symbol) or clockwise to decrease it (smaller flame symbol).
- Always adjust the flame so it does not extend beyond the base of the cookware.

5.4. Using the Wok Burner

- The wok burner provides high heat for rapid cooking. Use it with a wok or large pots.
- Ensure the wok is stable on the dedicated wok support (if provided) or the standard pan support.

5.5. Turning Off a Burner

- Turn the control knob clockwise until it reaches the 'off' position (usually marked with a dot or '0'). The flame will extinguish.

5.6. Cookware Recommendations

- Use pots and pans with flat, heavy bases that are suitable for gas hobs.
- Ensure the diameter of the cookware matches the size of the burner to maximize efficiency and prevent heat loss.
- Avoid using excessively large or small cookware that could be unstable or inefficient.

6. MAINTENANCE AND CLEANING

Regular cleaning and maintenance will ensure the longevity and optimal performance of your hob. Always ensure the hob is cool and disconnected from the power supply before cleaning.

6.1. Daily Cleaning

- Wipe the glass surface with a soft cloth and mild detergent after each use to remove spills and food residue.
- Dry thoroughly with a clean cloth to prevent water spots.

6.2. Cleaning Burners and Pan Supports

- Remove the pan supports, burner caps, and flame spreaders.
- Wash these components in warm soapy water. For stubborn stains, a non-abrasive cleaner can be used.
- Rinse thoroughly and dry completely before reassembling. Ensure burner parts are correctly positioned to prevent ignition issues.
- Clean the ignition electrodes gently with a small brush if they become soiled, ensuring they are dry before use.

6.3. Glass Surface Care

- For burnt-on food, use a ceramic hob scraper (plastic or metal, specifically designed for glass hobs) to carefully remove residue.
- Apply a specialized ceramic hob cleaner to maintain the shine and protect the surface.
- Avoid abrasive sponges, scouring pads, or harsh chemical cleaners that can scratch or damage the glass.

7. TROUBLESHOOTING

Before contacting customer service, please refer to the following table for common issues and their solutions.

Problem	Possible Cause	Solution
Burner does not ignite.	No gas supply. Burner parts incorrectly assembled. Ignition electrode dirty or wet. Power supply issue.	Check gas valve. Reassemble burner caps and flame spreaders correctly. Clean and dry electrode. Check power plug and fuse.
Flame is irregular or yellow.	Burner ports clogged. Incorrect gas type. Insufficient ventilation.	Clean burner ports. Contact a qualified technician to verify gas type and adjust if necessary. Ensure proper ventilation.
Gas smell detected.	Gas leak.	Immediately turn off gas supply, open windows, do not operate electrical switches. Contact gas supplier or qualified technician.
Control knob is stiff.	Food residue or grease buildup.	Clean around the base of the control knob. Do not force the knob.

8. SPECIFICATIONS

Key technical specifications for the Grundig GIGL 622410 Built-in Glass Hob:

- **Brand:** Grundig
- **Model:** GIGL 622410
- **Color:** White
- **Power Source:** Corded Electric (for ignition)
- **Heating Surface Material:** Glass Ceramic
- **Material:** Ceramic
- **Heating Element Type:** Stainless Steel
- **Installation Type:** Freestanding (Note: Product description indicates built-in, but specification lists 'Ayaklı' which translates to freestanding. Please refer to installation guide for precise details.)
- **Included Components:** Hob unit only
- **Manufacturer Part Number:** 8690842606533
- **ASIN:** B0CKWLDFFT

9. WARRANTY AND SUPPORT

For warranty information, please refer to the warranty card included with your product or visit the official Grundig website. Keep your purchase receipt as proof of purchase.

If you require technical assistance, spare parts, or service, please contact Grundig customer support. You can find contact details on the Grundig website or in the documentation provided with your appliance.

When contacting support, please have your product model number (GIGL 622410) and serial number ready.



© 2023 Grundig. All rights reserved.