

VASAGLE EKHO Collection 25.6" Counter Height Bar Stools

VASAGLE EKHO Collection 25.6-Inch Counter Height Swivel Bar Stools Instruction Manual

Model: EKHO Collection 25.6" Counter Height Bar Stools

1. SAFETY INFORMATION

To ensure safe use of your bar stools, please adhere to the following guidelines:

- Do not exceed the maximum weight limit of 265 lb (120 kg) per stool.
- Ensure the stool is properly assembled and placed on a stable, even surface to prevent tipping or accidents.
- Keep children away from the product during assembly to avoid potential hazards.
- Regularly check all screws and connections to ensure they remain tight.
- Avoid standing on the stool or using it as a ladder.

2. PACKAGE CONTENTS

Before beginning assembly, please verify that all components listed below are present and undamaged. If any parts are missing or damaged, please contact customer support.

Crafted to Perfection

Sophistication seamlessly meets practicality



Richly Textured
Synthetic Leather



Classic,
Exquisite Stitching



Image: Exploded view of the bar stool components. This image displays the individual parts required for assembly, including the upholstered seat, metal backrest frame, four splayed metal legs, a square metal footrest, and various screws and an Allen key for fastening.

Components per Stool:

- Upholstered Seat with Swivel Mechanism (1)
- Backrest Frame (1)
- Splayed Metal Legs (4)
- Square Metal Footrest (1)
- Assembly Hardware (Screws, Washers, Allen Key)
- Adjustable Leveling Feet (4)

3. ASSEMBLY INSTRUCTIONS

Follow these steps carefully to assemble your VASAGLE EKHO Collection Bar Stools. It is recommended to assemble the stools on a soft, clean surface to prevent scratches.

Step 1: Attach the Backrest to the Seat

Align the backrest frame with the pre-drilled holes on the underside of the seat. Secure it using the provided screws and Allen key. Do not fully tighten the screws until all components are in place.

Your browser does not support the video tag.

Video: This video demonstrates the initial steps of assembling the bar stool, including attaching the backrest to the seat base. It shows the process of aligning the parts and partially tightening the screws.

Step 2: Assemble the Legs and Footrest

Connect the four splayed metal legs to the central support structure. Then, attach the square metal footrest to the designated points on the legs. Ensure all connections are secure but allow for minor adjustments before final tightening.

Solid Support, Built to Last



Robust Steel Legs



Swivel Leveling Feet
for Perfect Balance

Thicker Walls with
Wear-Resistant
Surfaces

0.05"
(1.2 mm)

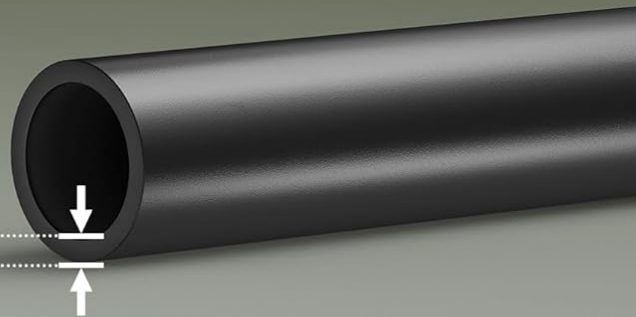


Image: A close-up view highlighting the robust steel legs and the adjustable swivel leveling feet, which contribute to the stool's stability and protect floors from scratches.

Step 3: Connect the Seat Assembly to the Leg Assembly

Carefully place the assembled seat onto the leg structure, aligning the pre-drilled holes. Secure with the remaining screws. Once all screws are in place, gradually tighten all screws on the entire stool assembly, starting from the bottom and working your way up, ensuring the stool is stable and level.

Your browser does not support the video tag.

Video: This video provides a detailed look at the assembly process, including the connection of the seat to the leg base and the final tightening of all components for a secure and stable structure.

4. USAGE GUIDELINES

Your VASAGLE EKHO Collection Bar Stools are designed for comfort and functionality. Here are some tips for optimal use:

- **Swivel Feature:** The 360° swivel seat allows for easy rotation, facilitating seamless interaction in your kitchen, home bar, or entertainment area.
- **Comfort:** The 3.1-inch thick, 58D molded foam seat provides supportive and enduring comfort.
- **Stability:** The splayed steel legs and swivel leveling feet ensure unwavering stability, even on slightly uneven surfaces. Adjust the leveling feet as needed to prevent wobbling.
- **Footrest:** Utilize the integrated footrest for added comfort and support, especially during extended periods of sitting.
- **Weight Capacity:** Adhere strictly to the maximum static load of 265 lb (120 kg) per stool.

User-Friendly Design

The swivel seat facilitates seamless interaction with others



Curved Backrest for Better Support



Footrests Promote Comfort

Image: This image illustrates the user-friendly design of the bar stool, highlighting the 360° swivel seat, the curved backrest for support, and the strategically placed footrests for comfort.

5. CARE AND MAINTENANCE

Proper care will extend the life and maintain the appearance of your bar stools:

- **Cleaning:** The synthetic leather cover is water-resistant and can be easily wiped clean with a damp cloth. Avoid harsh chemicals or abrasive cleaners.
- **Spills:** Promptly clean any spills to prevent staining.
- **Frame Care:** The matte steel legs are designed to resist scratches. Wipe with a soft, dry cloth to remove dust.
- **Inspection:** Periodically check all screws and connections and tighten them if necessary to ensure continued stability.
- **Placement:** Avoid prolonged exposure to direct sunlight or extreme temperatures, which can affect the material's longevity.

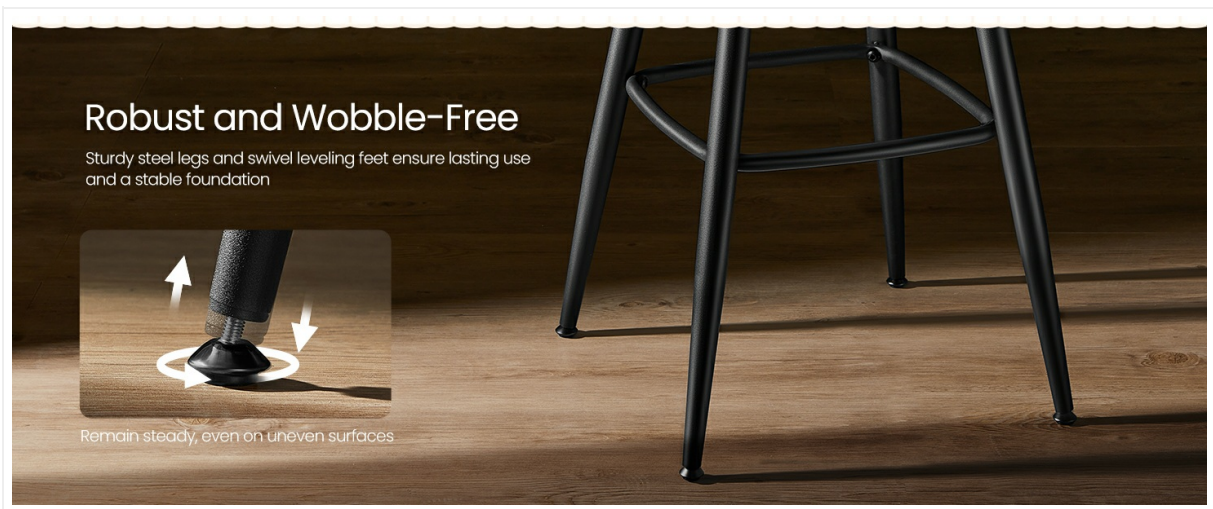


Image: A hand wiping a liquid spill from the water-resistant synthetic leather seat, demonstrating the ease of cleaning.

6. TROUBLESHOOTING

If you encounter any issues with your bar stools, please refer to the following common solutions:

- **Wobbling Stool:** Check that all screws are securely tightened. Adjust the swivel leveling feet on the bottom of the legs to compensate for uneven floor surfaces.
- **Difficulty Swiveling:** Ensure the swivel mechanism is clean and free of debris. If the issue persists, check for any loose connections in the seat assembly.
- **Loose Parts:** Re-tighten any loose screws or connections immediately to prevent further damage or instability.
- **Scratches on Floor:** Verify that the adjustable leveling feet are properly installed and intact. Replace if worn or missing.

If these steps do not resolve the issue, please contact customer support for further assistance.

7. SPECIFICATIONS

| Feature | Detail |
|--------------------|--|
| Product Dimensions | 21.3"D x 21.3"W x 35.8"H (54 cm D x 54 cm W x 91 cm H) |
| Seat Height | 25.6 Inches (65 cm) |

| | |
|-------------------------------|---|
| Color | Forest Green |
| Brand | VASAGLE |
| Style | With Backrest (Swivel) |
| Frame Material | Metal |
| Seat Material Type | 58D Molded Foam, PU (Synthetic) Leather |
| Maximum Weight Recommendation | 265 Pounds (120 kg) |
| Assembly Required | Yes |
| Number of Items | 2 (Set of 2) |
| Item Weight | 29.9 pounds (per stool) |
| UPC | 194343054896 |

VASAGLE
by SONGMICS HOME

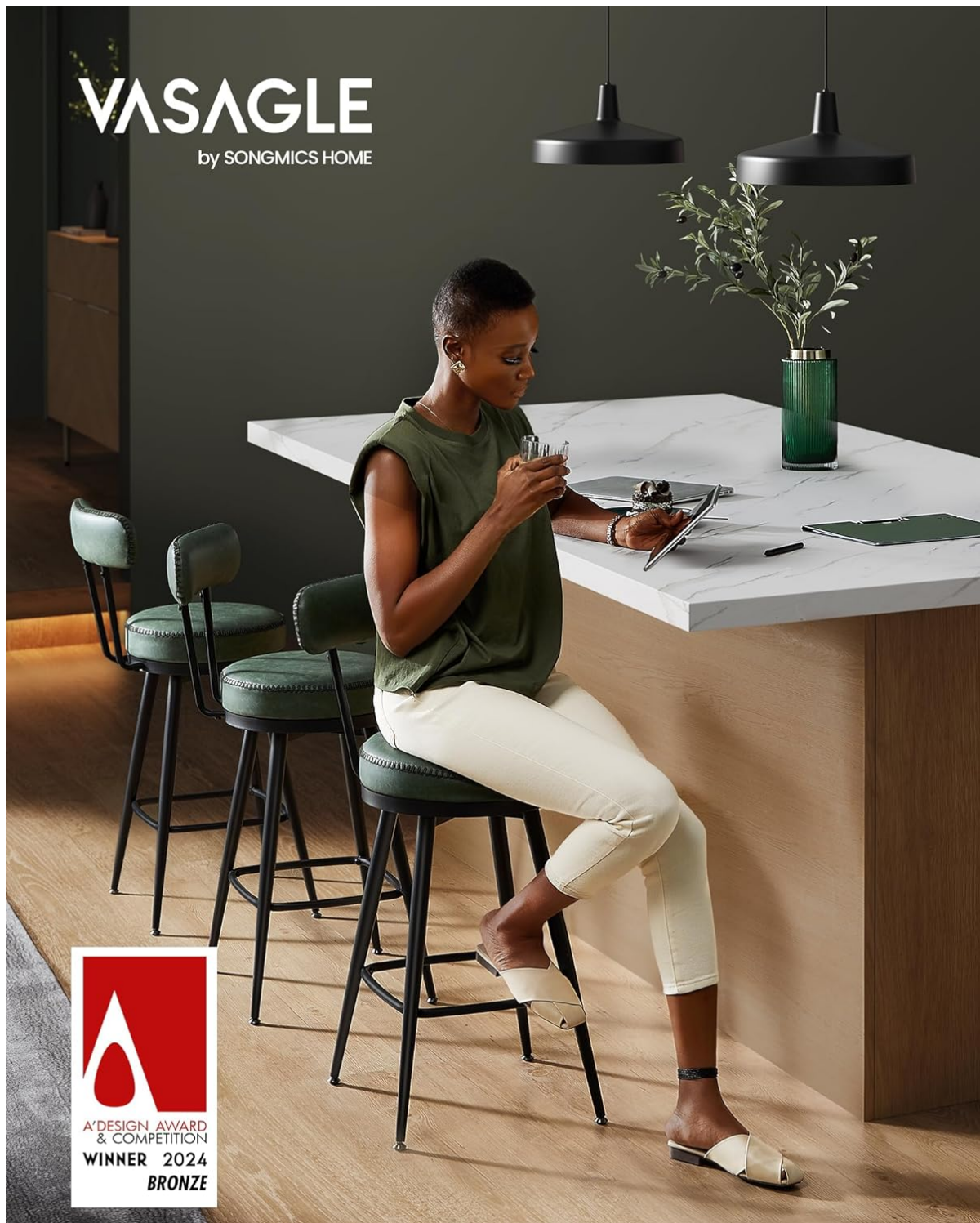


Image: A technical drawing of the bar stool with all key dimensions labeled in both inches and centimeters, along with the maximum static load capacity.

8. WARRANTY AND SUPPORT

For warranty information, product support, or to purchase replacement parts, please visit the official VASAGLE website or contact their customer service department. Keep your purchase receipt for any warranty claims. You can find more information and products from VASAGLE at their official store: [VASAGLE by SONGMICS HOME Store](#).

