

Devoko 0463

Devoko 140x60cm Electric Height Adjustable Standing Desk User Manual

Model: 0463

1. INTRODUCTION

This manual provides essential instructions for the assembly, operation, and maintenance of your Devoko 140x60cm Electric Height Adjustable Standing Desk, Model 0463. Designed to promote a healthier work environment, this desk allows you to seamlessly switch between sitting and standing positions, enhancing productivity and reducing physical strain.

2. SAFETY INFORMATION

- **Caution:** Operate the electric height adjustment mechanism with care.
- Do not exceed the maximum load capacity of **70 kg** on the desktop to prevent damage or injury.
- Keep children and pets away from the desk during operation.
- Ensure all cables are properly managed to avoid entanglement during height adjustments.
- Do not place hands or objects near moving parts of the desk frame.
- Always ensure the desk is on a level surface before operation.

3. PRODUCT OVERVIEW

The Devoko Electric Height Adjustable Standing Desk features a robust design for stability and durability. Key components include:

- Electric height-adjustable frame with T-shaped legs.
- 140x60cm desktop made of engineered wood.
- Integrated control panel with LED display and memory presets.
- Monitor support for ergonomic screen placement.
- Cable management grommets and rounded corners for safety.
- Accessory hook for headphones or bags.



Image 3.1: Fully assembled Devoko Electric Standing Desk with monitor support, laptop, and accessories.

4. SETUP AND ASSEMBLY

Detailed installation instructions are included in the product packaging. Please refer to these instructions for step-by-step guidance. General assembly involves:

1. Unpacking all components and verifying against the parts list.
2. Assembling the desk frame, ensuring all screws are securely tightened.
3. Attaching the desktop sections and monitor support.
4. Connecting the control panel and power supply.



Image 4.1: Diagram illustrating the dimensions of the desk components, including the 140cm x 60cm desktop and the height-adjustable frame.

5. OPERATING INSTRUCTIONS

5.1. Height Adjustment

The desk's height can be adjusted electrically between 73 cm and 118 cm. Use the control panel located on the front edge of the desk.

- Press the **UP (▲)** button to raise the desk.
- Press the **DOWN (▼)** button to lower the desk.
- Release the button when the desired height is reached. The LED display will show the current height.

5.2. Memory Presets

The control panel allows you to save two frequently used heights for quick adjustment.

1. Adjust the desk to your desired height using the UP/DOWN buttons.
2. Press the **"M"** button (Memory) once, then press either **"1"** or **"2"** to save the current height to that preset.
3. To recall a saved height, simply press the corresponding **"1"** or **"2"** button. The desk will automatically move to the saved position.

Interface de commande claire



Image 5.1: Close-up of the desk's control panel, showing the LED height display, up/down arrows, and two memory preset buttons.

5.3. Ergonomics and Usage Tips

Alternating between sitting and standing throughout your workday can improve posture, circulation, and overall well-being. Utilize the monitor support to ensure your screen is at eye level, whether sitting or standing, to reduce neck and eye strain.

SUPPORT D'ÉCRAN



Ajustez les supports d'écran pour que le moniteur soit à hauteur des yeux

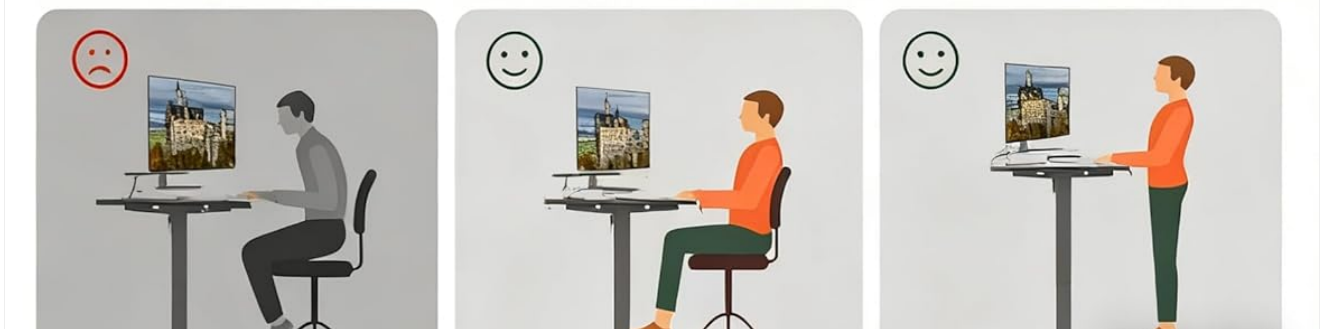


Image 5.2: Illustrations demonstrating correct ergonomic postures for sitting and standing at the desk, highlighting the importance of monitor height.

Fonctionnalités de conception spéciales



Passage de câbles



Coins arrondis



Crochet



Image 5.3: Visual representation of the desk's special features, including cable management grommets, rounded corners for safety, and an integrated hook for accessories.

6. MAINTENANCE

- **Cleaning:** Wipe the desktop and frame with a soft, damp cloth. Avoid abrasive cleaners or harsh chemicals.
- **Inspections:** Periodically check all screws and connections to ensure they remain tight.
- **Cable Management:** Ensure power cords and other cables are not pinched or tangled, especially during height

adjustments.

7. TROUBLESHOOTING

If your desk is not functioning as expected, please check the following:

- **No Movement:** Ensure the power cord is securely plugged into both the desk and a working wall outlet.
- **Uneven Movement:** Check that the desk is not overloaded and that all components are assembled correctly and securely.
- **Error Codes:** If the LED display shows an error code, refer to the detailed troubleshooting section in your included assembly manual.

8. SPECIFICATIONS

| Feature | Specification |
|----------------------------|--|
| Brand | Devoko |
| Model Number | 0463 |
| Desktop Dimensions (L x W) | 140 cm x 60 cm |
| Height Adjustment Range | 73 cm - 118 cm |
| Maximum Load Capacity | 70 kg |
| Material | Engineered Wood (Desktop), Metal (Frame) |
| Item Weight | 21.8 kg |
| Noise Level | Less than 60 dB |
| Memory Presets | 2 |

9. WARRANTY AND SUPPORT

For specific warranty information and after-sales support, please refer to the documentation included with your product or contact Devoko customer service. Detailed installation instructions and further assistance are available through official support channels.