

[manuals.plus](#) /

› [Devoko](#) /

› [Devoko 120x60cm Electric Standing Desk User Manual - Model 0463](#)

## Devoko 0463

# Devoko 120x60cm Electric Standing Desk User Manual

Model: 0463

## 1. INTRODUCTION

---

Thank you for choosing the Devoko 120x60cm Electric Standing Desk. This desk is designed to enhance your workspace by allowing seamless transitions between sitting and standing positions, promoting better posture, reducing fatigue, and increasing productivity. This manual provides essential information for the safe assembly, operation, and maintenance of your new desk.



*Image 1: The Devoko 120x60cm Electric Standing Desk in a typical setup, showcasing its spacious design and monitor support.*

## 2. SAFETY WARNINGS

---

- **Maximum Weight Capacity:** Do not exceed the maximum load capacity of **70 kg (154 lbs)**. Overloading the desk can cause damage or injury.
- **Secure Assembly:** Ensure all components are securely mounted and tightened according to the assembly instructions before use.

- **Movement and Adjustment:** Exercise caution when moving or adjusting the desk due to its metal structure and electrical components. Keep hands and objects clear of moving parts.
- **Children and Pets:** Keep children and pets away from the desk during operation to prevent accidents.
- **Power Supply:** Use only the provided power adapter and ensure it is connected to a grounded outlet. Do not operate the desk with a damaged power cord or plug.
- **Liquid Spills:** Avoid spilling liquids on the control panel or motor components. In case of a spill, immediately unplug the desk and allow it to dry completely before reconnecting power.

### 3. SETUP AND ASSEMBLY

---

Detailed installation instructions are included in the product packaging. Please follow these instructions carefully for proper assembly. The desk features a robust metal frame and a multi-part wooden tabletop designed for stability.

#### Key Assembly Tips:

- **Workspace:** Ensure you have ample space for assembly.
- **Tabletop Alignment:** The tabletop consists of multiple wooden parts. Take time to align them properly during assembly to ensure a smooth and even surface.
- **Cable Management:** Utilize the integrated cable pass-throughs to keep your workspace tidy.

# Fonctionnalités de conception spéciales



Passage de câbles



Coins arrondis



Crochet



*Image 2: Integrated design features such as cable management, rounded corners, and a convenient hook for headphones or bags.*

## 4. OPERATING INSTRUCTIONS

---

Your Devoko electric standing desk is equipped with an intuitive control panel for easy height adjustment and memory functions.

### 4.1. Height Adjustment

- **Adjusting Up:** Press and hold the **UP (▲)** button to raise the desk to your desired standing height.
- **Adjusting Down:** Press and hold the **DOWN (▼)** button to lower the desk to your desired sitting height.
- The desk height can be adjusted smoothly and quietly between **73 cm and 118 cm**. Release the button once the desired height is reached.

## 4.2. Memory Presets

The control panel allows you to save two preferred height settings for quick recall.

- **Saving a Preset:**
  1. Adjust the desk to your desired height (e.g., sitting height).
  2. Press the **M** button (or similar memory button, if present). The LED display may flash.
  3. Immediately press either **1** or **2** to save the current height to that memory slot.
- **Recalling a Preset:** Simply press the **1** or **2** button corresponding to your saved height. The desk will automatically move to that position.

# Interface de commande claire



Image 3: The desk's control panel, featuring an LED display for current height, up/down adjustment buttons, and two memory preset buttons.

# SUPPORT D'ÉCRAN



Ajustez les supports d'écran pour que le moniteur soit à hauteur des yeux

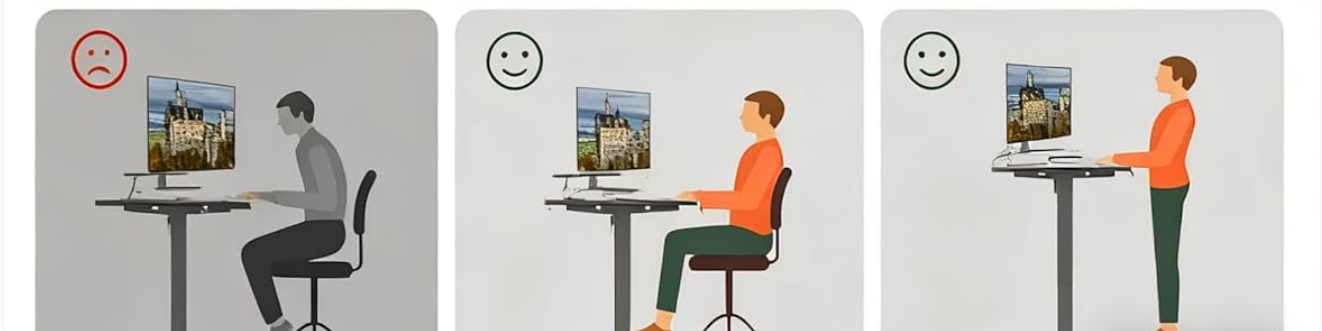


Image 4: Visual guide demonstrating proper ergonomic posture when using the desk in both sitting and standing positions, highlighting the benefit of the monitor support.

## 5. MAINTENANCE

- **Cleaning:** Wipe the desk surfaces with a soft, damp cloth. Avoid abrasive cleaners or harsh chemicals that could damage the finish.
- **Check Connections:** Periodically check all screws and bolts to ensure they remain tight. Re-tighten if

necessary.

- **Cable Inspection:** Inspect the power cord and motor cables for any signs of wear or damage. Replace immediately if damage is found.
- **Motor Care:** The desk's motors are designed for durability (tested over 20,000 cycles). Avoid continuous operation for extended periods without rest to prevent overheating.

## 6. TROUBLESHOOTING

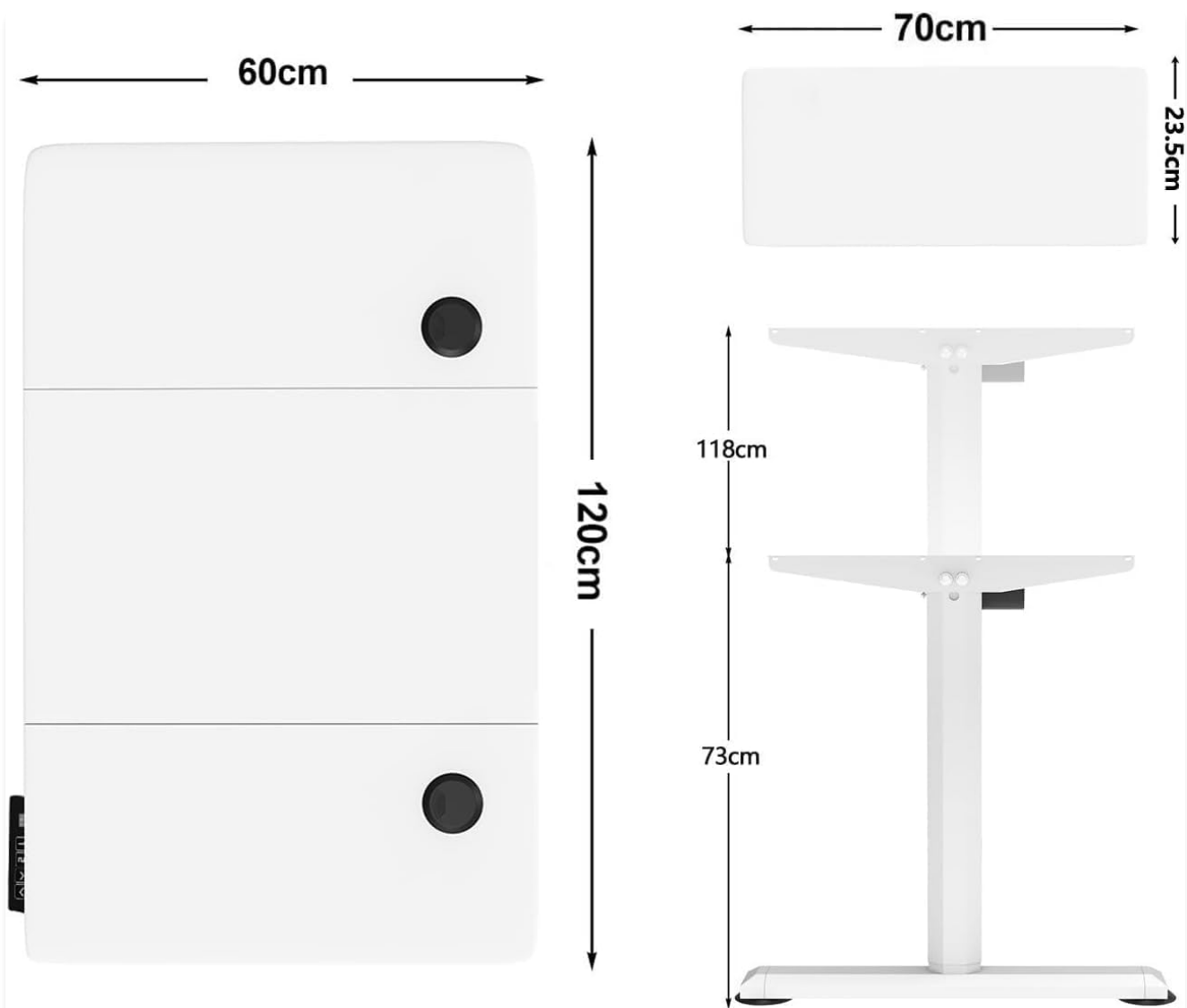
---

Problem	Possible Cause	Solution
Desk does not move.	Power cable disconnected; Overload; Motor error.	Check power connections. Reduce weight on desk. Unplug for 10 minutes, then reconnect.
Desk moves unevenly or makes unusual noise.	Uneven load; Loose connections; Obstruction.	Distribute weight evenly. Check all assembly screws. Ensure no objects are obstructing the legs.
Memory presets not working.	Presets not saved correctly.	Re-save the memory presets following the instructions in Section 4.2.
Desk wobbles.	Loose connections; Uneven floor.	Ensure all screws are tightened. Adjust leveling feet if your floor is uneven.

If you encounter issues not listed here or if the problem persists after attempting the solutions, please contact customer support.

## 7. SPECIFICATIONS

---



60kg



< 60db



73-118cm

Image 5: Key specifications and dimensions of the Devoko Electric Standing Desk.

Feature	Detail
Model Number	0463
Brand	Devoko
Color	White
Tabletop Dimensions (L x W)	120 cm x 60 cm (47.2 in x 23.6 in)
Height Adjustment Range	73 cm - 118 cm (28.7 in - 46.5 in)
Product Dimensions (L x W x H at lowest)	60 x 120 x 72 cm

Feature	Detail
Weight Capacity	70 kg (154 lbs)
Product Weight	22 kg (48.5 lbs)
Material	Wood (Tabletop), Metal (Base)
Features	Adjustable, Electric, 2 Memory Presets, Monitor Support
Noise Level	<60 dB

## 8. WARRANTY AND SUPPORT

---

For warranty information, please refer to the documentation included with your purchase or contact the seller directly. Devoko is committed to providing quality products and customer satisfaction.

If you have any questions, require assistance with assembly, or need troubleshooting support, please contact the Devoko customer service team or the retailer from whom you purchased the product. Please have your model number (0463) and purchase details ready when contacting support.