



Manuals.plus /

› Dyna-Living /

› Dyna-Living 40FT RGB LED Storefront Light Instruction Manual (Model BIZH0069IEC93)

Dyna-Living BIZH0069IEC93

Dyna-Living 40FT RGB LED Storefront Light Instruction Manual

Model: BIZH0069IEC93

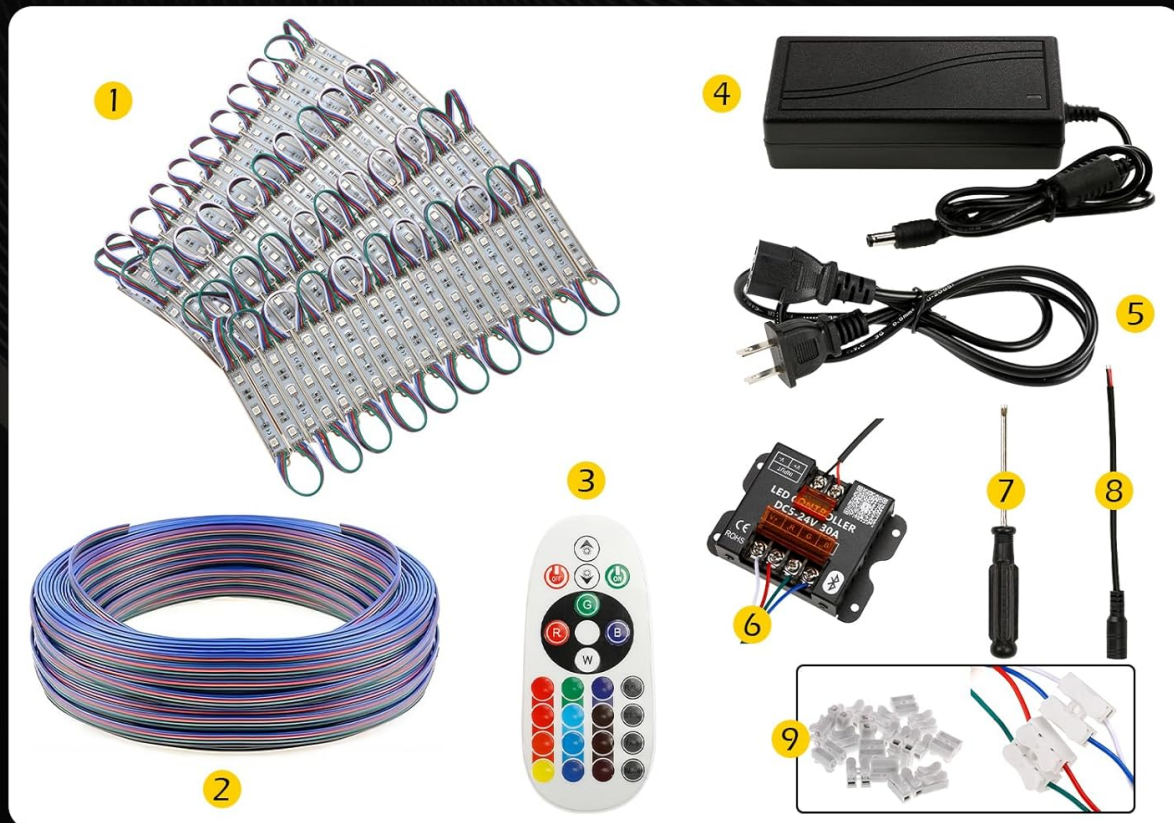
INTRODUCTION

This manual provides detailed instructions for the installation, operation, and maintenance of your Dyna-Living 40FT RGB LED Storefront Light. Please read thoroughly before use to ensure proper functionality and safety.

WHAT'S INCLUDED

The Dyna-Living 40FT RGB LED Storefront Light set includes the following components:

- 4 strings of 20PCS-3 LED Module Lights (total 80 modules)
- 1 IR Remote Controller
- 1 30A Bluetooth Controller
- 1 12V 60W Power Adapter
- 1 Power Cord
- 1 12m/39.37Ft Supplementary Wire
- 1 DC Bus
- 9 Terminals
- 1 Screwdriver



- | | |
|--------------------------------------|------------------------------------|
| ① 20PCS-3 LED Module Lights × 4 | ⑥ 30A Bluetooth Controller Set × 1 |
| ② 12m/39.37ft Supplementary Wire × 1 | ⑦ Screwdriver × 1 |
| ③ IR Remote Controller × 1 | ⑧ DC Bus × 1 |
| ④ 12V 60W Power Adapter × 1 | ⑨ Terminals × 9 |
| ⑤ Power Cord × 1 | |

Image: Overview of all included components, including LED modules, controllers, power supply, and wiring accessories.

Your browser does not support the video tag.

Video: An official overview of the Dyna-Living 40FT RGB LED Storefront Lights, demonstrating components and initial setup.

SETUP INSTRUCTIONS

- 1. Prepare LED Modules:** The LED modules come with self-adhesive tape on the back for easy installation. They can be used individually or strung together.
- 2. Connect Power Adapter to Bluetooth Controller:** Connect the 12V 60W Power Adapter to the 30A Bluetooth Controller. Ensure the wires are securely fastened using the provided screwdriver and terminals.
- 3. Connect LED Modules to Bluetooth Controller:** Connect the wires from the LED modules to the Bluetooth controller. Match the colors: R (red), G (green), B (blue), and V+ (white) to the corresponding labels on the controller.
- 4. Address Voltage Drop (if needed):** If you observe uneven brightness or gradual dimming along the length of the LED modules, use the provided 12m/39.37ft Supplementary Wire. Add parallel wires equal

to the length of the LED modules (4-pin 22/24AWG) to supply additional voltage, ensuring consistent brightness across all modules.

5. **Secure Installation:** Once all connections are made and tested, use the adhesive backing on the LED modules to secure them in your desired location.

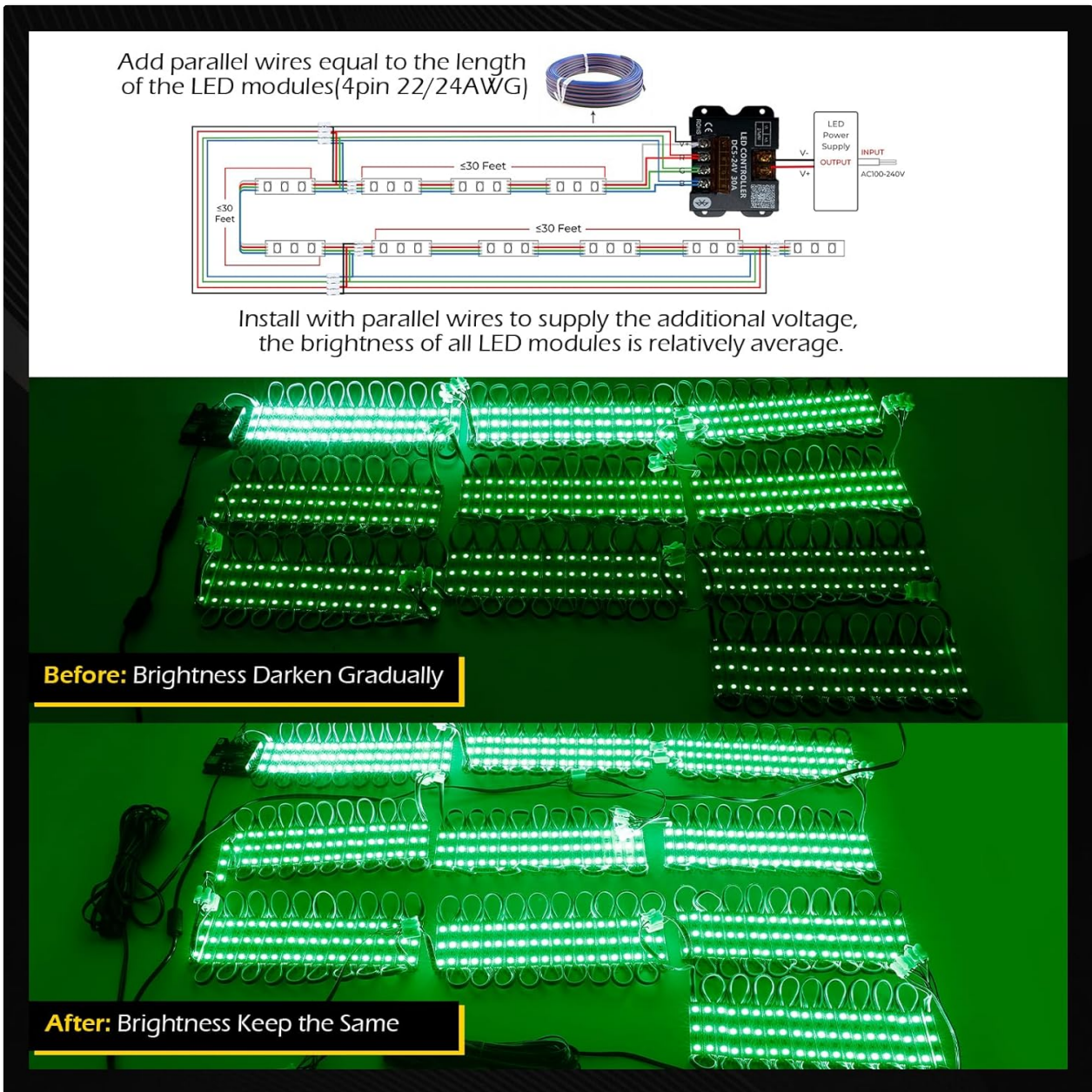


Image: Wiring diagram and visual comparison illustrating how supplementary wires resolve brightness inconsistencies due to voltage drop.

4* 20PCS-3 LED Module Lights Total Length 40 FT

Per Module Light Full Length 10 FT

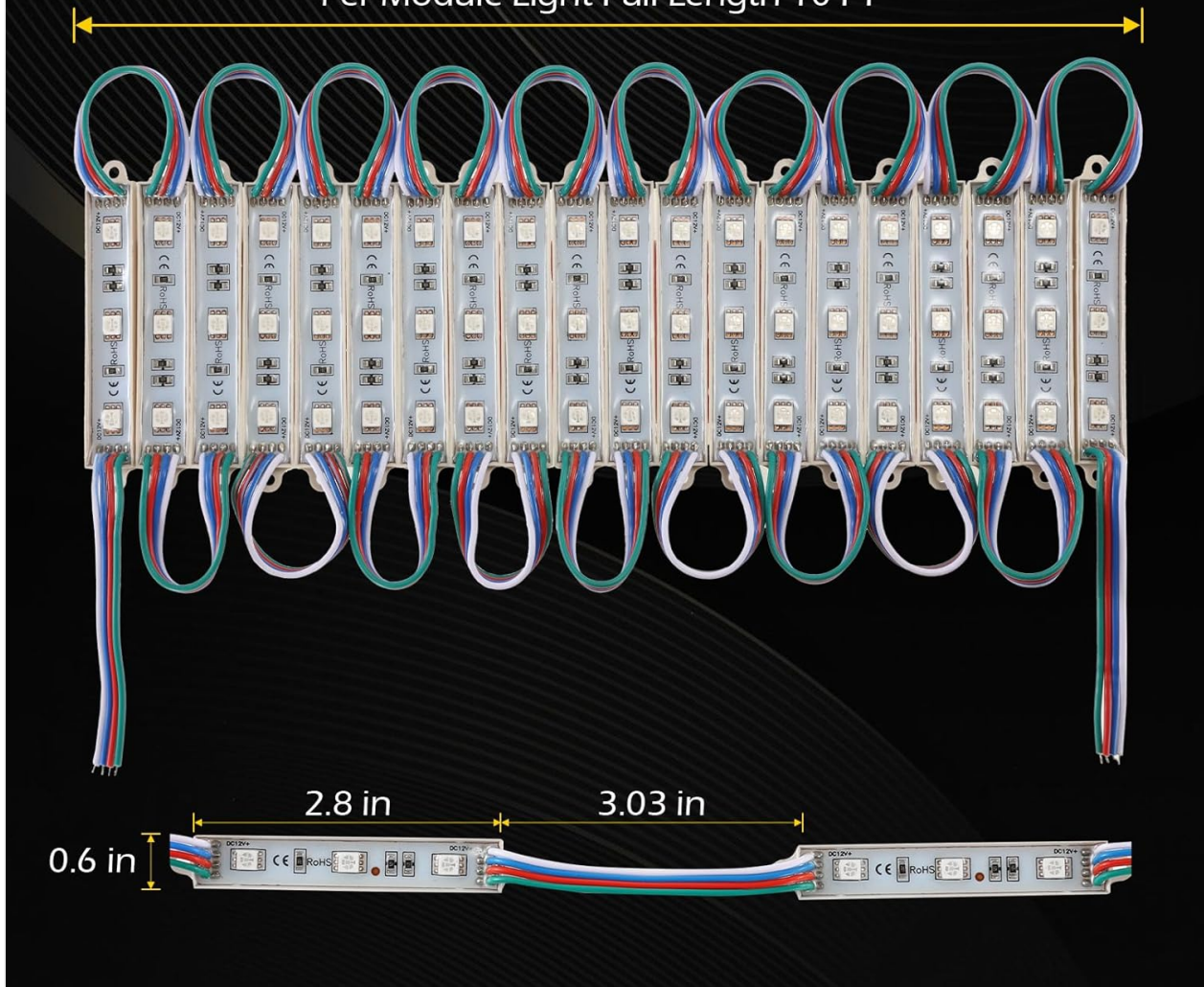


Image: Dimensions of the LED modules and their interconnected design.

OPERATING INSTRUCTIONS

1. Smart Bluetooth APP Control

Control your LED lights using the 'HappyLighting' app, available on the App Store and Google Play. The app offers various features:

- **Multi-color Choose Mode:** Select from a wide spectrum of colors.
- **Music Sync Mode:** Lights dance to the rhythm of music played through the app or sound detected by the built-in microphone.
- **Multi-color Scene Mode:** Choose from pre-set dynamic lighting scenes.
- **Timing Change Light Mode:** Schedule lights to turn on/off or change color at specific times.
- **Shake Phone Change Light Mode:** Change lighting effects by shaking your phone.

Download the 'HappyLighting' app: <http://download.appglobalmarket.com/happylightingdownload.html>

2. IR Remote Control

The included IR remote control provides convenient access to basic lighting functions:

- **Multi-color Choose:** Select static colors.
- **Brightening Adjustable:** Adjust the brightness level.
- **Speed Adjustable:** Control the speed of dynamic modes.
- **Multi Mode Choose:** Switch between various lighting modes.

Smart Bluetooth APP Control
Remote Control Distance 15m

Download 'HappyLighting' on the 'App Store' or 'Google Play'

Muilt-color Choose Mode Music Sync Mode Built-in Mic Sound Control Mode Multi-Color Scene Mode Timing Change Light Mode Shake Phone Change Light Mode

IR Remote Control
Remote Control Distance 10m

Multi Color Choose Brighting Adjustable Speed Adjustable Multi Mode Choose

Image: Smart Bluetooth APP control and IR remote control options.

LED Module Light Sync with Music Effect

Start your favorite music in APP, the light will dance with the rhythm of the music or sound.



Image: LED module lights syncing with music effects.

Timing Turn on the LED Module Light Mode

You can set the timing to turn off and turn on the lights and can choose the effect mode of the light.



 **11:00 PM**
Nightlight



 **7:00 AM**
Wake you up

Image: Timing functions for turning lights on/off or changing modes.

MAINTENANCE

The Dyna-Living LED modules are designed for durability and outdoor use:

- **IP68 Waterproof:** Constructed from anti-static PVC plastic with a professional epoxy process, these lights are anti-scratch, antioxidant, and high-temperature resistant. They can operate normally in temperatures ranging from -20°C to 60°C.
- **Long Lifespan:** The light source has a life expectancy of 50,000 hours.

Note: Do not immerse the lights in water or expose them directly to continuously wet locations, despite their IP68 rating.

Professional Epoxy Technology LED Module Lights



High Waterproof Level: IP68 Waterproof
Working Temperature: -20°C ~ 60°C
Light Source Life: 50000 h

- ✓ 5050 SMD Highlight Beads
- ✓ High Light Transmittance
- ✓ Higher Brightness
- ✓ Long Service Life

Image: Professional epoxy technology ensures IP68 waterproofing.

TROUBLESHOOTING

Uneven Brightness or Gradual Dimming

Issue: The LED modules at the end of a long string appear dimmer than those closer to the power source.

Solution: This is typically due to voltage drop over longer distances. Use the provided 12m/39.37Ft Supplementary Wire to add parallel connections to the LED modules. This supplements the voltage, ensuring consistent brightness across all modules. Refer to the 'Setup Instructions' section and the accompanying image for detailed wiring guidance.

SPECIFICATIONS

Feature	Detail
Color	Multicolor
Brand	Dyna-Living
Indoor/Outdoor Usage	Outdoor
Special Feature	Corded
Light Source Type	LED
Power Source	DC
Light Color	Multicolor
Style	Modern
Material	Polyvinyl Chloride
Controller Type	Remote Control
Number of Light Sources	300
Voltage	12 Volts (DC)
Wattage	60 watts
Number of Items	4 (strings)
Control Method	App
Item Length	40 Feet
Item Weight	2.61 pounds
Model Number	BIZH0069IEC93

APPLICATIONS

The Dyna-Living 40FT RGB LED Storefront Lights are versatile and suitable for various applications:

- Storefront window lighting
- Commercial signs
- Car interior or exterior decoration
- Outdoor landscape decoration
- Indoor/outdoor house decoration
- Three-dimensional luminous signs
- Festival decor

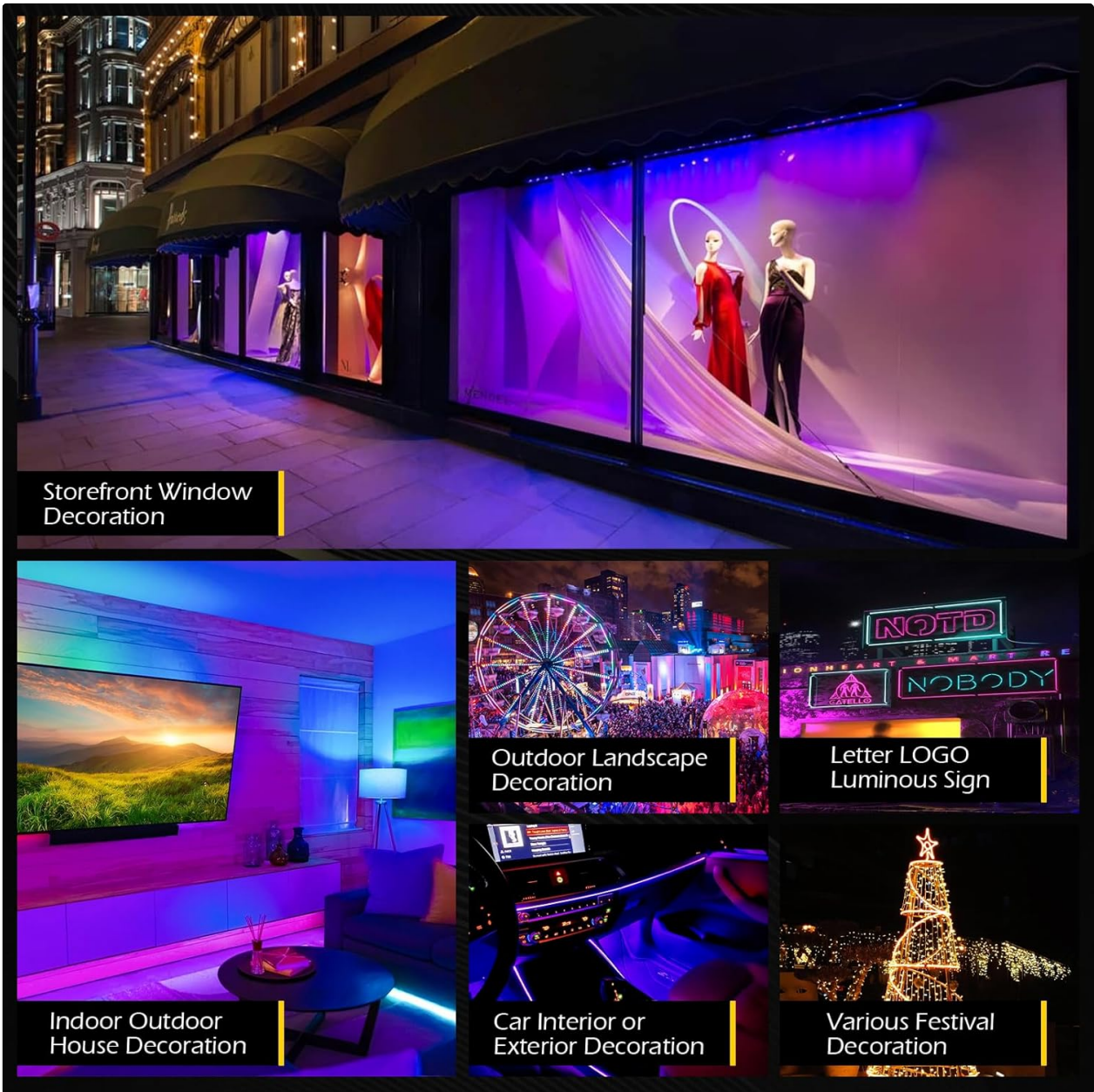


Image: Examples of wide applications for the LED storefront lights.