

ULTIMEA U3600

ULTIMEA Apollo S50 U3600 4.1 Channel Detachable Soundbar - Instruction Manual

Model: U3600

INTRODUCTION

Thank you for choosing the ULTIMEA Apollo S50 U3600 4.1 Channel Detachable Soundbar. This manual provides essential information for setting up, operating, and maintaining your soundbar system. Please read it thoroughly before use to ensure optimal performance and safety.

The Apollo S50 U3600 offers a versatile audio experience with its detachable design, powerful wired subwoofer, and multiple connectivity options, including Bluetooth 5.3, HDMI ARC, Optical, and AUX. Enjoy enhanced sound for movies, music, and games.

WHAT'S IN THE BOX

Carefully unpack all components and ensure you have received the following items:

- 1 x Soundbar (detachable into two parts)
- 1 x Wired Subwoofer
- 1 x Power Adapter
- 1 x Remote Control
- 1 x HDMI ARC Cable
- 1 x Digital Optical Cable
- 1 x Stereo RCA to 3.5mm Audio Cable
- 1 x Stereo RCA to RCA Audio Cable (3.9 inches)
- 1 x Stereo RCA to RCA Audio Cable (98 inches)
- 2 x Wall Mounting Kits
- 2 x Wall Brackets
- 2 x Bases (for vertical placement)

- 1 x Quick Start Guide

SETUP

1. Soundbar Assembly (Detachable Design)

The soundbar can be used as a single horizontal unit or split into two vertical towers.

1. **For Horizontal Placement:** Align the joints of the two soundbar parts and twist to connect them securely.
2. **For Vertical Placement:** Attach each soundbar part to its respective base, aligning the joints and twisting to connect.



Image: Steps for assembling the detachable soundbar for horizontal and vertical configurations.

2. Placement Options

Choose the best placement for your soundbar system:

- **Desktop Placement (Horizontal):** Place the assembled soundbar horizontally below your TV.
- **Desktop Placement (Vertical L/R):** Place the two separated soundbar towers vertically on either side of your TV, using the provided bases.
- **Wall Mount (Horizontal):** Use the wall mounting kit to mount the assembled soundbar horizontally below your TV.
- **Wall Mount (Vertical L/R):** Use the wall mounting kits to mount the two separated soundbar towers vertically on either side of your TV.



Image: Recommended TV sizes for optimal soundbar placement.

3. Connecting the Subwoofer

Connect the wired subwoofer to the main soundbar unit using the dedicated subwoofer port. Ensure the connection is secure.

4. Audio Connections to TV/Devices

The soundbar offers multiple connection options. Choose the one that best suits your TV or audio source.



Image: Overview of soundbar connection ports.

HDMI ARC Connection (Recommended)

For the best audio quality and control, use the HDMI ARC connection.

1. Connect one end of the HDMI ARC cable to the "ARC/eARC" port on your TV.
2. Connect the other end of the HDMI ARC cable to the "ARC" port on the soundbar.
3. On the soundbar remote, press the "ARC" button to select the ARC input.
4. Ensure your TV's audio output settings are configured for HDMI ARC and PCM format (refer to your TV manual).



Image: Detailed steps for HDMI ARC connection.

Optical Connection

Use the Optical connection if your TV does not have an HDMI ARC port.

1. Insert one end of the Digital Optical cable into the "OPT" port on your TV.

2. Insert the other end of the cable into the "OPTICAL" port on the soundbar.
3. On the soundbar remote, press the "OPT" button to select the Optical input.
4. Ensure your TV's audio output settings are configured for Optical and PCM format.



Image: Detailed steps for Optical connection.

AUX Connection

For devices with a 3.5mm audio output, use the AUX connection.

1. Connect the 3.5mm end of the Stereo RCA to 3.5mm Audio Cable to your device's headphone jack or AUX output.
2. Connect the RCA ends to the "AUX" input on the soundbar.
3. On the soundbar remote, press the "AUX" button to select the AUX input.

USB Connection

For playing audio files directly from a USB drive.

1. Insert a USB drive (FAT32 format) into the "USB" port on the soundbar.
2. On the soundbar remote, press the "USB" button to select the USB input.

OPERATING INSTRUCTIONS

1. Power On/Off

Press the power button on the soundbar or the remote control to turn the unit on or off.

2. Input Selection

Use the dedicated input buttons (ARC, OPT, AUX, BT, USB) on the remote control to switch between different audio sources.

3. Bluetooth Pairing

To connect a Bluetooth device:

1. Press the "BT" button on the remote control to enter Bluetooth pairing mode. The indicator light will flash.
2. On your device (smartphone, tablet, etc.), enable Bluetooth and search for "ULTIMEA Apollo S50".
3. Select the soundbar from the list to pair. Once connected, the indicator light will be solid.



Image: Bluetooth 5.3 wireless connection with compatible devices.

4. EQ Modes

The soundbar features three preset EQ modes to optimize your audio experience:

- **Music Mode:** Enhances musical clarity and balance.
- **Movie Mode:** Provides a more immersive cinematic soundstage with enhanced dialogue and effects.
- **Game Mode:** Optimizes audio for gaming, highlighting in-game sounds.

Press the corresponding EQ button on the remote control to switch between modes.

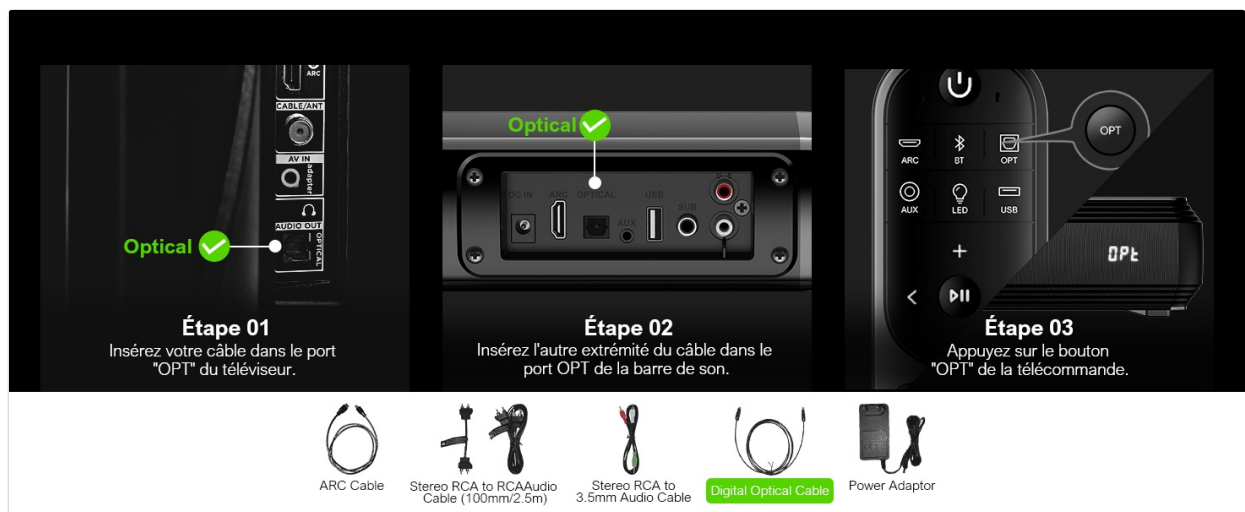


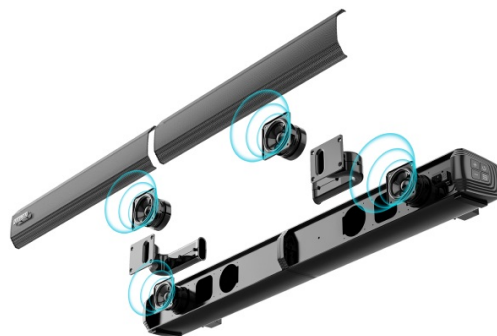
Image: Example of 10-band EQ settings for audio optimization.

5. BassMX Technology and Bass Adjustment

The integrated BassMX technology enhances low frequencies for a more immersive experience. You can also adjust the bass level using the remote control.

5 haut-parleurs puissants

Adoptez des aimants de qualité aéronautique et un diaphragme composite pour un son sensible, clair et distinct.



Plus de basses, plus de sensations

Rendez le son correct. Vous donnez l'impression d'être à l'aise.

Image: Wired subwoofer with adjustable bass levels.

6. CEC Synchronization

If connected via HDMI ARC, CEC (Consumer Electronics Control) allows you to control the soundbar's power and volume using your TV remote. This feature simplifies control by reducing the number of remotes needed.



Image: Remote control and CEC synchronization feature.

MAINTENANCE

To ensure the longevity and optimal performance of your ULTIMEA soundbar, follow these maintenance guidelines:

- **Cleaning:** Use a soft, dry cloth to clean the surfaces of the soundbar and subwoofer. Do not use liquid cleaners, aerosols, or abrasive materials, as they may damage the finish.
- **Ventilation:** Ensure adequate ventilation around the soundbar and subwoofer. Do not block any ventilation openings.
- **Placement:** Avoid placing the unit in direct sunlight, near heat sources, or in areas with high humidity or dust.
- **Power Cord:** Regularly check the power cord for any damage. If damaged, discontinue use and contact customer support.
- **Storage:** If storing the soundbar for an extended period, disconnect it from the power outlet and store it in a cool, dry place.

TROUBLESHOOTING

If you encounter any issues with your soundbar, refer to the following common problems and solutions:

Problem	Possible Cause	Solution
No power	Power cable not connected or outlet not working.	Ensure the power adapter is securely connected to the soundbar and a working power outlet.
No sound	Incorrect input selected, volume too low, or TV audio settings incorrect.	Verify the correct input source is selected on the soundbar. Increase the volume on both the soundbar and your TV. Check your TV's audio output settings (e.g., set to PCM for Optical/ARC).
Bluetooth not connecting	Soundbar not in pairing mode, device too far, or previously paired with another device.	Ensure the soundbar is in Bluetooth pairing mode (flashing BT light). Move your device closer to the soundbar. Disconnect from other Bluetooth devices.
Remote control not working	Batteries are dead or remote is out of range/blocked.	Replace the batteries in the remote control. Ensure there are no obstructions between the remote and the soundbar's sensor.
Distorted sound	Volume too high, incorrect audio source settings, or poor cable connection.	Lower the volume. Check your audio source settings. Ensure all cables are securely connected.

If the problem persists after trying these solutions, please contact ULTIMEA customer support.

SPECIFICATIONS

Bluetooth Range

Feature	Specification
Brand	ULTIMEA
Model Name	Apollo S50
Model Number	U3600
Speaker Type	Soundbar with Subwoofer
Audio Channels	4.1
Max Speaker Output Power	200 Watts
Frequency Response	18 KHz
Connectivity Technology	HDMI ARC/Bluetooth 5.3/Optical/AUX

Feature	Specification
Up to 49 feet (14.94 meters)	
Subwoofer Connection	Wired
Control Method	Remote Control
Material	Plastic
Color	Black
Item Dimensions (L x W x H)	81.1 x 9.8 x 7 cm
Item Weight	4.59 Kilograms
Special Features	Wired Subwoofer, Detachable Design, BassMAX Technology
Recommended Uses	For TVs, computers, smartphones or tablets, projectors

WARRANTY AND SUPPORT

Warranty Information

The ULTIMEA Apollo S50 U3600 Soundbar comes with a **1-year limited warranty** from the date of purchase. This warranty covers manufacturing defects and workmanship under normal use. It does not cover damage caused by misuse, accidents, unauthorized modifications, or external factors.

Please retain your proof of purchase for warranty claims.

Customer Support

For any questions, technical assistance, or warranty claims, please contact ULTIMEA customer support:

- **Expert Assistance:** Available 24/7 to help with your inquiries.
- **Live Chat Service:** For immediate support, visit the ULTIMEA website.
- **30-Day Hassle-Free Returns:** If you are not satisfied with your purchase, you may return it within 30 days.

You can find more information and contact details on the official ULTIMEA website: [Visit the ULTIMEA Store](#)