

SMALLRIG 4404

SmallRig Side Handle Quick Release Adaptor (Model 4404) Instruction Manual

1. INTRODUCTION

This instruction manual provides detailed guidance for the installation, operation, and maintenance of your SmallRig Side Handle Quick Release Adaptor, Model 4404. This adaptor is designed to enhance your mobile phone photography and videography experience by providing quick and secure attachment of compatible side handles to SmallRig phone cages.

Please read this manual thoroughly before using the product to ensure proper function and longevity.

2. PACKAGE CONTENTS

- 1 x Side Handle Quick Release Adaptor
- 2 x M5 Allen Cylindrical Screws
- 1 x Allen Wrench

3. PRODUCT OVERVIEW AND COMPATIBILITY

The SmallRig Side Handle Quick Release Adaptor 4404 is a robust accessory crafted from aluminum alloy and silicone, designed for durability and ease of use. It facilitates rapid attachment and detachment of side handles to compatible phone cages.

3.1. Product Image



Figure 1: SmallRig Side Handle Quick Release Adaptor 4404.

3.2. Compatibility

- **Phone Cage Compatibility:** Designed for SmallRig universal quick release phone cage 4299 and upcoming SmallRig special phone cages for the iPhone 15 series.
- **Side Handle Compatibility:** Compatible with all SmallRig mobile phone side handles (Models 2772, 3838, 3894, and HSS2424), as well as any side handles on the market secured by M5x10 screws.

Mobile Phone Cage Compatibility

Designed for SmallRig universal quick release phone cage (ID: 4299) and SmallRig special phone cage for iPhone 15 series (Coming Soon)



Figure 2: Illustration of the adaptor's compatibility with a SmallRig phone cage (ID: 4299).

Provide Quick-Release Ecology for Mobile Phone Shooting

Compatible with SmallRig side handles (ID:3838, 3894, 2772) and (ID: HSS2424), as well as all side handles on the market that are secured by M5x10 screws



Figure 3: The adaptor is compatible with various SmallRig side handles and other M5x10 screw-secured handles.

4. INSTALLATION

Follow these steps to properly install the Quick Release Adaptor and attach it to your phone cage.

4.1. Attaching the Adaptor to a Side Handle

1. Locate the two M5 Allen cylindrical screws and the Allen wrench provided in the package.
2. Align the Quick Release Adaptor with the mounting holes on your compatible SmallRig side handle.
3. Insert the M5 screws through the adaptor and into the side handle.
4. Use the Allen wrench to securely tighten the screws. Ensure the adaptor is firmly attached to the handle.

Simple Installation for More Professional and Efficient Shooting

Quick Release Adaptor for Side Handle



*Only handle quick-release adaptor, handle not included

Figure 4: Illustration of attaching the Quick Release Adaptor to a SmallRig side handle using M5 screws.

4.2. Attaching the Handle (with Adaptor) to a Phone Cage

1. Identify the quick release slot on your SmallRig phone cage.
2. Align the positioning post of the adaptor with the 1/4"-20 threaded hole on the phone cage.
3. Press the adaptor firmly into the quick release slot until you hear a distinct "click" sound, indicating it is securely locked.

1S Install with Phone Cage, Secure and Stable

Lock: Align the positioning post with the 1/4 -20 threaded hole and press until it makes a "click" sound

Unlock: Press the unlock button double-sided

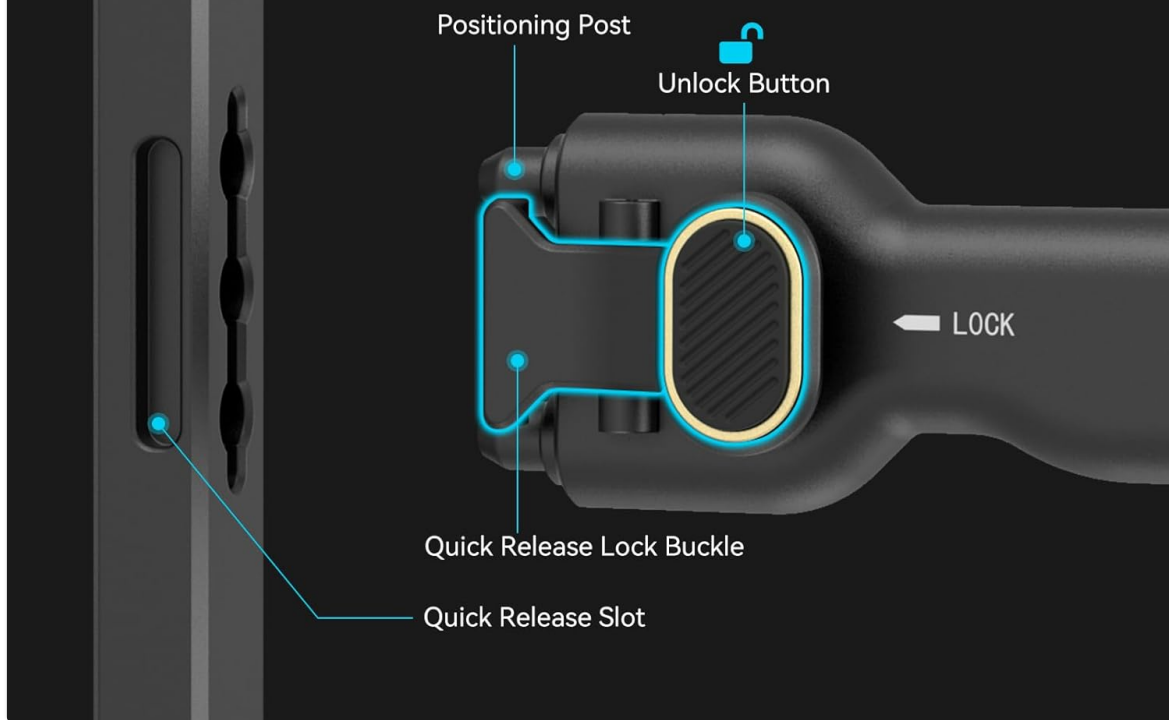


Figure 5: Diagram illustrating the 1-second installation process with the phone cage, showing positioning post, quick release lock buckle, and unlock button.

4.3. Video Demonstration: Quick Release System

Your browser does not support the video tag.

Video 1: This video demonstrates the quick release mechanism of the SmallRig Universal Phone Cage, showcasing how the side handle adaptor can be quickly attached and detached.

5. OPERATION

5.1. Locking and Unlocking the Adaptor

- **Lock:** Once the positioning post is aligned and pressed into the threaded hole, the quick release lock buckle will engage, securing the handle to the cage. A "click" sound confirms the lock.
- **Unlock:** To detach the handle, simply press the double-sided unlock button on the adaptor. This releases the lock buckle, allowing for quick removal.

5.2. Quick Conversion Between Horizontal and Vertical Shooting

The quick release design allows for seamless transitions between horizontal and vertical shooting

orientations. By quickly detaching and reattaching the handle to different mounting points on your phone cage, you can adapt to various shooting scenarios without tedious installation or disassembly.


Quick-release adapter for side handle

Adapter × 1

M5 Hexagonal Cylindrical Screws × 2

Hexagonal Wrench × 1

ID: 4404



Product Dimensions:

53.2 × 28.0 × 27.8mm / 2.1 × 1.1 × 1.1in

Product Weight:

34.0 ± 2.0g / 1.2 ± 0.1oz

Materials:

Aluminum alloy, Silicone

Package Dimensions:

66.0 × 53.5 × 42.0mm / 2.6 × 2.1 × 1.7in

Packaging Weight:

53.0 ± 5.0g / 1.2 ± 0.2oz

Colors:

Black, Gold

Figure 6: Demonstrates the quick conversion capability between horizontal and vertical shooting modes by repositioning the handle.

5.3. Bluetooth Remote Functionality (with compatible handles)

Some compatible SmallRig side handles (e.g., Models 2772, 3838, 3894, HSS2424) may feature integrated Bluetooth remote controls. If your handle includes this feature, you can trigger recording or capture photos remotely, further enhancing your shooting flexibility. Refer to your specific handle's manual for Bluetooth pairing instructions.

6. SPECIFICATIONS

Feature	Detail
Brand	SMALLRIG
Model Number	4404
Product Dimensions	2.09"D x 1.1"W x 1.09"H (53.2mm x 28mm x 27.8mm)
Item Weight	1.2 ounces (34 Grams)
Materials	Aluminum Alloy, Silicone
Color	Black

7. MAINTENANCE AND CARE

- Keep the adaptor clean by wiping it with a soft, dry cloth.
- Avoid exposing the product to extreme temperatures or harsh chemicals.
- Store the adaptor in a dry, dust-free environment when not in use.
- Regularly check screws for tightness to ensure secure attachment.

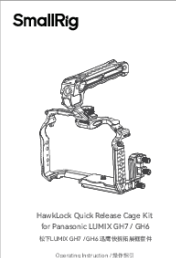



8. TROUBLESHOOTING



- **Handle feels loose:** Ensure all M5 screws attaching the adaptor to the handle are tightened. Verify the adaptor is fully clicked into the phone cage's quick release slot.
- **Difficulty attaching/detaching:** Check for any obstructions in the quick release slot or on the adaptor's posts. Ensure the unlock button is fully pressed when detaching.

9. WARRANTY AND SUPPORT

For warranty information and customer support, please refer to the official SmallRig website or contact your local distributor. Keep your purchase receipt for warranty claims.

Related Documents - 4404

 <p>SmallRig</p> <p>HawkLock Quick Release Cage Kit for Panasonic LUMIX GH7 / GH6 62TL LUMIX GH7 / GH6 快速释放笼组件 Operating Instructions - 1588 3010</p>	<p>SmallRig HawkLock Quick Release Cage Kit for Panasonic LUMIX GH7/GH6 Operating Instructions</p> <p>Operating instructions for the SmallRig HawkLock Quick Release Cage Kit, designed for Panasonic LUMIX GH7 and GH6 cameras. Includes specifications, product details, and installation steps for the cage and top handle.</p>
 <p>SmallRig</p> <p>Mini Side Handle with 14-20 Screws Kit</p>	<p>SmallRig Mini Side Handle with 14-20 Screws Kit - Operating Instructions and Specifications</p> <p>Operating instructions and specifications for the SmallRig Mini Side Handle (2916), a lightweight and ergonomic accessory for mirrorless and digital cameras, featuring 1/4"-20 screw mounts, cold shoe, and strap eyelet. Includes safety guidelines, compatibility, and technical details.</p>
 <p>SmallRig</p> <p>4841 / 4842 Rotatable Bilateral Quick Release Side Handle - Operating Instruction -</p>	<p>SmallRig 4841/4842 Rotatable Bilateral Quick Release Side Handle - Operating Instructions</p> <p>Comprehensive operating instructions for the SmallRig 4841 and 4842 Rotatable Bilateral Quick Release Side Handles, covering installation, features, wireless remote control functions, and specifications for mobile videography.</p>
 <p>SmallRig</p> <p>Universal Tripod Dolly</p>	<p>SmallRig Universal Tripod Dolly CCP2646 Camera Cage - Operating Instructions</p> <p>Operating instructions and specifications for the SmallRig Universal Tripod Dolly CCP2646 camera cage, designed for Panasonic Lumix GH5, GH5 II, and GH5S cameras. Features include protection, accessory mounting, and safety guidelines.</p>

<div data-bbox="118 91 309 566"><div data-bbox="140 114 231 143">SmallRig</div><div data-bbox="173 174 252 443"></div><div data-bbox="140 463 295 537"><p>P20 Universal Foldable Mobile Phone Cage User Manual</p></div></div>	<div data-bbox="341 275 1102 304">SmallRig P20 Universal Foldable Mobile Phone Cage User Manual</div> <div data-bbox="341 315 1434 385"><p>User manual for the SmallRig P20 Universal Foldable Mobile Phone Cage, detailing its features, installation, usage, and warranty information.</p></div>
<div data-bbox="118 602 309 875"><div data-bbox="129 616 197 633">SmallRig</div><div data-bbox="129 687 298 777"></div><div data-bbox="134 824 293 862"><p>Universal Thermal Mobile Phone Cage Operating Instruction</p></div></div>	<div data-bbox="341 667 1166 696">SmallRig Universal Thermal Mobile Phone Cage - Operating Instructions</div> <div data-bbox="341 707 1452 815"><p>Comprehensive operating instructions for the SmallRig Universal Thermal Mobile Phone Cage, detailing its features, functions, setup, and warranty information for mobile video shooting and live streaming.</p></div>