

## Sejoy SHARP 3S

# Sejoy Cordless Hair Clippers User Manual

Model: SHARP 3S

Brand: Sejoy

## 1. INTRODUCTION

Thank you for choosing the Sejoy Cordless Hair Clippers, Model SHARP 3S. This professional-grade hair clipper is designed for precision hair cutting, beard trimming, and body grooming, suitable for both home use and professional barbers. Featuring a robust design, advanced LED display, and long-lasting battery, it provides a convenient and efficient grooming experience. Please read this manual thoroughly before first use to ensure proper operation and maintenance.

## 2. PRODUCT OVERVIEW

### 2.1 Components and Features

The Sejoy SHARP 3S hair clipper comes with a comprehensive set of accessories to facilitate various grooming needs. Key features include:

- **Detachable Blade Mechanism:** Easy to clean and replace, ensuring sharp and precise cuts. Includes two replacement blades.
- **Adjustable Guide Combs:** Two exchangeable guide combs provide 20 length settings (1-10mm and 11-20mm) for versatile styling.
- **LED Display:** Clearly shows battery percentage and charging status.
- **Type-C Charging:** Modern and convenient charging interface.
- **Long Battery Life:** 800mAh battery provides approximately 90 minutes of continuous use after a 2-hour charge.
- **Travel Lock:** Prevents accidental activation during transit.
- **Ergonomic Design:** Comfortable grip for extended grooming sessions.



Image: Sejoy Cordless Hair Clippers with included accessories, including guide combs, charging cable, cleaning brush, and oil bottle.





Image: Close-up view highlighting the powerful motor, clear LED display, and durable carbon steel blade of the clipper.

### 3. SETUP

#### 3.1 Initial Charging

Before first use, fully charge the clipper. Connect the Type-C charging cable to the clipper and a compatible USB power source (e.g., car charger, adapter, power bank, or PC). The LED display will indicate charging progress. A full charge takes approximately 2 hours and provides 90 minutes of runtime.

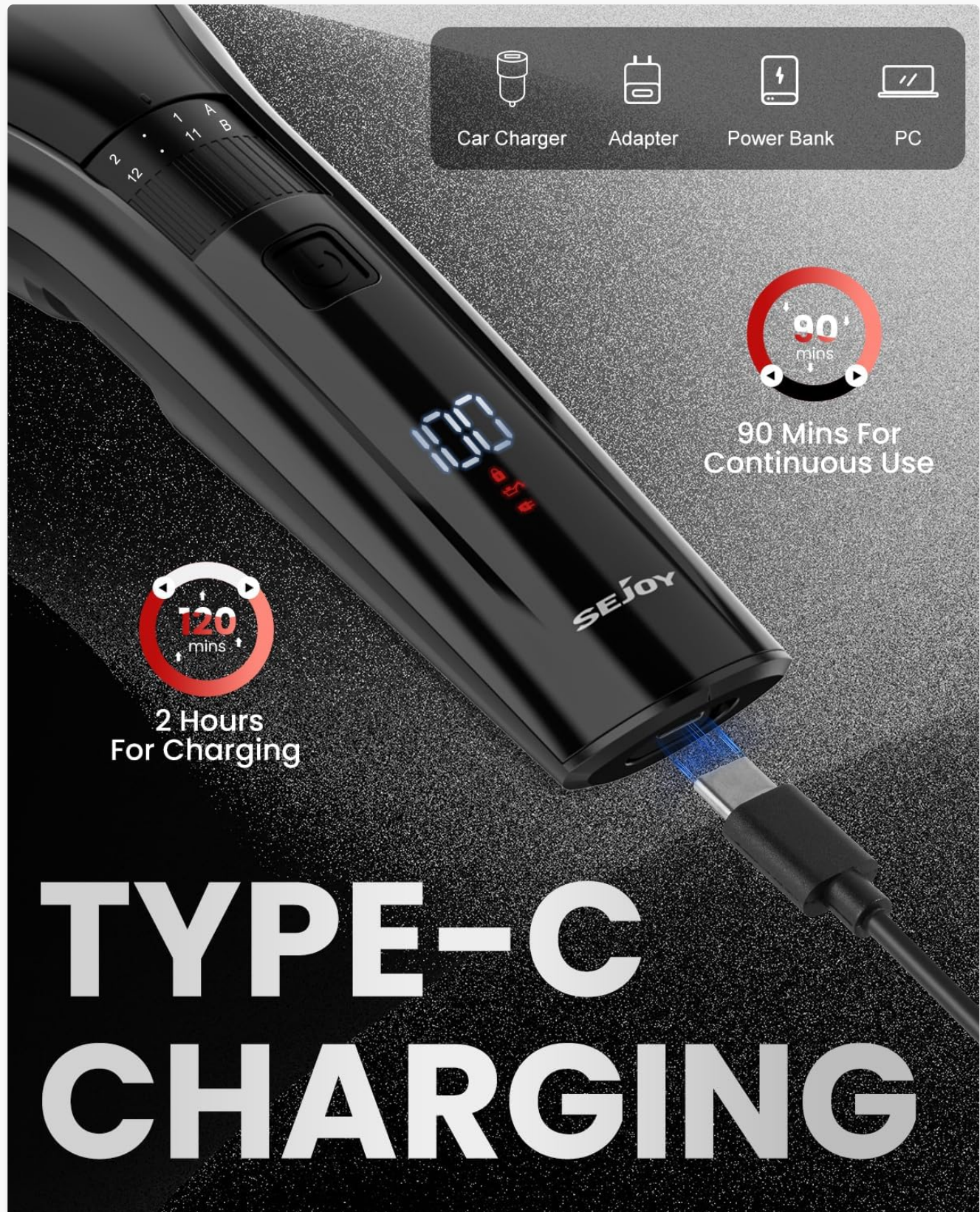


Image: Illustration of the Type-C charging port on the Sejoy hair clipper, showing compatibility with various USB power sources.

## 3.2 Attaching/Detaching Blades and Guide Combs

The clipper features a detachable blade head for easy cleaning and replacement. It also comes with two adjustable guide combs.

1. **To Detach Blade Head:** Press the blade teeth with your thumb and push the blade head outwards.
2. **To Install Blade Head:** Align the cutter head with the slot on the clipper body and push it into the slot with force until it clicks into place.
3. **To Attach Guide Comb:** Select the desired guide comb. Align the comb with the clipper head and push it firmly until it snaps into place.
4. **To Remove Guide Comb:** Gently push the comb away from the clipper head in the direction of the arrow.



Image: Step-by-step visual guide for detaching and installing the blade head, and attaching the guide comb on the Sejoy hair clipper.



Image: Close-up of the two exchangeable guide combs and the length adjustment dial on the Sejoy hair clipper.

## 4. OPERATING INSTRUCTIONS

### 4.1 Power On/Off and Travel Lock

- **To Power On:** Press the power button once.
- **To Power Off:** Press the power button once.
- **To Activate Travel Lock:** Press and hold the power button for 3 seconds until the lock icon appears on the LED display.
- **To Deactivate Travel Lock:** Press and hold the power button for 3 seconds until the lock icon disappears.

### 4.2 Adjusting Cutting Length

The clipper offers 20 precise cutting lengths using the two adjustable guide combs. Rotate the dial on the clipper



body to select the desired length setting within the range of the attached comb (1-10mm or 11-20mm).

### 4.3 Usage Guidelines

Ensure hair is clean and dry before clipping. For best results, move the clipper against the direction of hair growth. Start with a longer setting and gradually reduce the length as needed.

- **Hair Cutting:** Use appropriate guide comb for desired hair length.
- **Beard Trimming:** Select a shorter length setting for beard maintenance.
- **Body Hair Trimming:** Can be used for general body grooming.
- **Hair Art/Fading:** Utilize the precision of the clipper for detailed work or fading techniques.

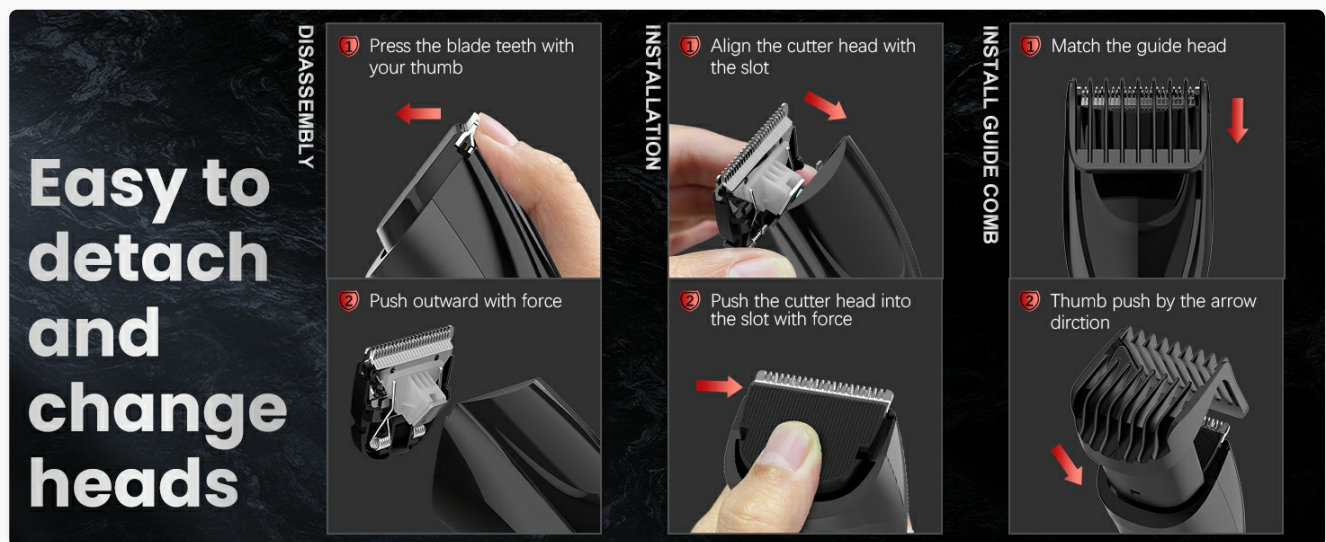


Image: Collage showing the versatility of the Sejoy hair clipper for home use, professional barbers, body hair trimming, and creating hair art.



Image: Demonstrations of the Sejoy hair clipper being used for a child's haircut and for beard trimming.

## 5. MAINTENANCE

Regular cleaning and maintenance will prolong the life and performance of your Sejoy hair clipper.

1. **Remove Guide Comb:** Detach the guide comb after each use.
2. **Clean the Head with a Brush:** Use the provided cleaning brush to remove loose hairs from the blade and clipper body.
3. **Wash with Water:** The blade head can be rinsed under running water. Ensure the clipper body is not

submerged.

- 4. **Dry the Machine with a Towel:** Thoroughly dry the blade head and clipper body with a clean towel.
- 5. **Oil the Cutter Head:** Apply a small drop of lubricating oil (included) to the blades after every few uses to maintain smooth operation and prevent rust.

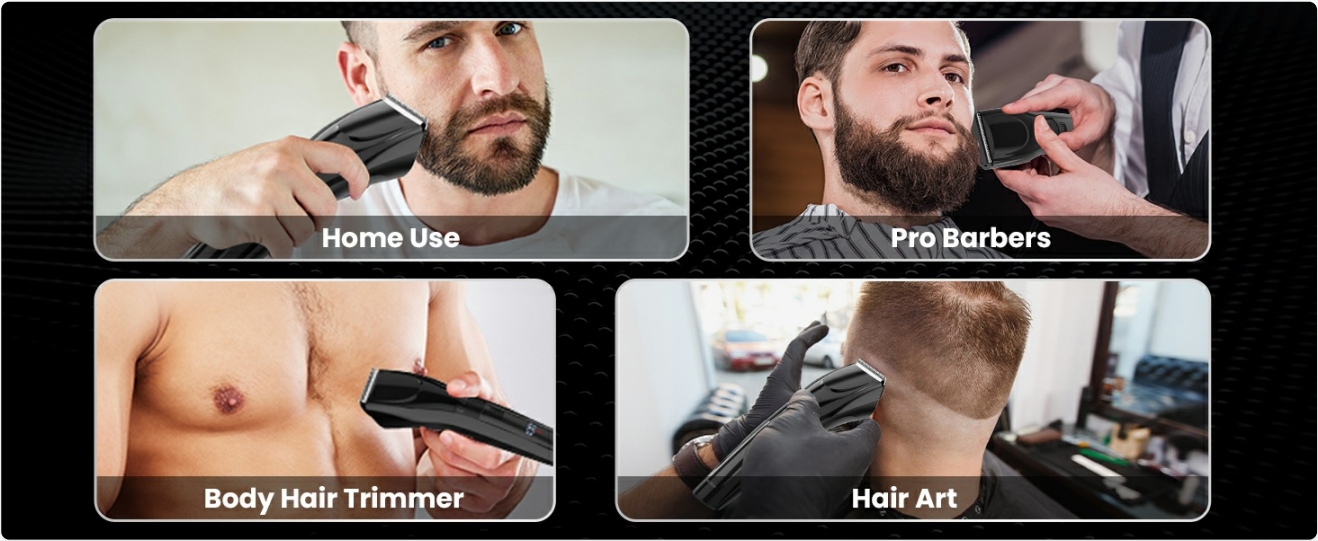


Image: Visual steps for cleaning and maintaining the Sejoy hair clipper, including removing the comb, brushing, washing, drying, and oiling the blades.

5.1 Storage

Store the clipper in a cool, dry place, away from direct sunlight and moisture. Ensure the travel lock is activated when storing or transporting the device.

6. TROUBLESHOOTING

- **Clipper not turning on:** Ensure the battery is charged. Connect to the charger and allow sufficient time to charge. Check if the travel lock is activated.
- **Cuts are not clean or pulling hair:** The blades may be dull or clogged with hair. Clean the blade head thoroughly and apply lubricating oil. If issues persist, consider replacing the blade head.
- **Hair getting lodged between comb and blades:** This can happen with very fine or dense hair. Regularly remove the guide comb and clean the area with the brush during use.
- **Reduced battery life:** Ensure the clipper is fully charged before each use. Over time, battery capacity may decrease.

If you encounter issues not listed here, please refer to the warranty and support section for assistance.

7. SPECIFICATIONS

Feature	Specification
Model Number	SHARP 3S
Battery Type	1 Lithium Ion battery
Battery Capacity	800mAh
Charging Time	Approx. 2 hours

Operating Time	Approx. 90 minutes
Adjustable Lengths	20 (1-10mm, 11-20mm)
Item Weight	0.3 Kilograms (10.55 ounces)
Package Dimensions	8.07 x 4.88 x 2.2 inches
Manufacturer	JOYTECH Healthcare Co.,Ltd

## 8. SAFETY INFORMATION

Please observe the following safety precautions:

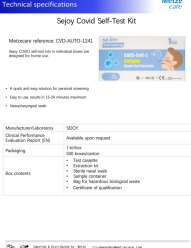
- Keep the appliance dry. Do not use it in or near water.
- Do not disassemble the product yourself, except for blade cleaning as instructed.
- Keep out of reach of children.
- Use only the provided charging cable and recommended power sources.
- Do not use if the blades are damaged or bent, as this may cause injury.
- Unplug the clipper before cleaning or performing maintenance.



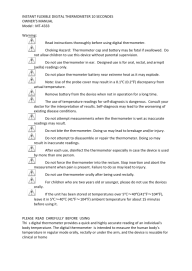
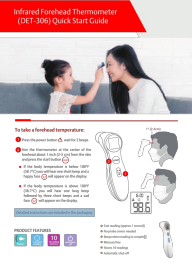
## 9. WARRANTY AND SUPPORT

For warranty information or technical support, please contact the seller or manufacturer directly. Retain your proof of purchase for any warranty claims. For general inquiries, you may visit the Sejoy Store on Amazon: [Sejoy Store](#).

© 2023 Sejoy. All rights reserved.

### Related Documents - SHARP 3S

	<p><a href="#">Master Pro Hair Clipper User Manual and Operating Guide   Sejoy</a></p> <p>Detailed user manual for the Sejoy Master Pro hair clipper, covering setup, operation, maintenance, safety precautions, and troubleshooting for effective home grooming.</p>
 <p>Technical specifications for the Sejoy Covid Self-Test Kit (CVD-AUTO-1241) by Metzcare. The image shows a document with sections for 'Technical specifications', 'Measures reference CVD-AUTO-1241', 'Packaging', and 'Box contents'.</p>	<p><a href="#">Sejoy Covid Self-Test Kit Technical Specifications   Metzcare</a></p> <p>Technical specifications for the Sejoy Covid Self-Test Kit (CVD-AUTO-1241) by Metzcare. Details include product features, rapid results, nasopharyngeal swab use, packaging, box contents, and distributor information.</p>

	<p><a href="#">Sejoy BP-1326 Arm-Type Digital Blood Pressure Monitor Owner's Manual</a></p> <p>This owner's manual provides comprehensive instructions for the Sejoy BP-1326 arm-type fully automatic digital blood pressure monitor. Learn about setup, operation, testing, memory functions, troubleshooting, and maintenance for accurate home health monitoring.</p>
	<p><a href="#">Dados Técnicos: Teste Combinado Antígeno Sejoy COVID/Influenza A&amp;B/RSV</a></p> <p>Informações técnicas detalhadas sobre o teste rápido combinado de antígeno Sejoy para detecção de COVID-19, Influenza A&amp;B e RSV. Inclui especificações de sensibilidade e especificidade clínica, conteúdo da caixa e dados do fabricante para uso profissional.</p>
	<p><a href="#">Sejoy MT-4333 Instant Flexible Digital Thermometer: Owner's Manual &amp; Usage Guide</a></p> <p>Comprehensive owner's manual for the Sejoy MT-4333 Instant Flexible Digital Thermometer. Learn about its features, warnings, operating instructions for oral, rectal, and armpit use, troubleshooting, battery replacement, cleaning, calibration, and warranty. This fast and accurate thermometer is designed for home and clinical use.</p>
	<p><a href="#">Infrared Forehead Thermometer DET-306: Quick Start Guide &amp; Usage Tips</a></p> <p>Learn how to accurately take forehead temperatures with the DET-306 Infrared Forehead Thermometer. This guide covers usage, product features, and important tips for reliable readings.</p>