

xiwxi N09

xiwxi N09 Wireless Earbuds User Manual

Model: N09 | Brand: xiwxi

INTRODUCTION

This manual provides detailed instructions for the proper use and maintenance of your xiwxi N09 Wireless Earbuds. Please read this manual thoroughly before using the product to ensure optimal performance and longevity.

WHAT'S IN THE BOX

Verify that all items are present:

- xiwxi N09 Wireless Earbuds (Left and Right)
- Charging Case
- USB-C Charging Cable
- Multiple pairs of Silicone Earcaps (S, M, L - M size pre-installed)
- User Manual (this document)



Image: Contents of the xiwxi N09 Wireless Earbuds package, showing the earbuds, charging case, USB-C cable, and

different sized silicone ear tips.

PRODUCT OVERVIEW

Familiarize yourself with the components of your earbuds and charging case.



Image: A top-down view of the xiwx N09 Wireless Earbuds and their charging case. The earbuds are shown outside the case, highlighting their design and the charging contacts.

- **Earbuds:** Left (L) and Right (R) earbuds with touch control areas and charging contacts.
- **Charging Case:** Houses and charges the earbuds, features LED indicators for battery status, and a USB-C charging port.

SETUP

1. Charging the Earbuds and Case

Before first use, fully charge the earbuds and charging case.

1. Place the earbuds into the charging case. Ensure they are correctly seated; magnetic contacts will hold them in place.
2. Connect the USB-C charging cable to the charging port on the case and plug the other end into a USB power adapter (not included).
3. The LED indicators on the charging case will illuminate to show charging status. A full charge typically takes about 1.5 hours.



Image: A USB-C cable connected to the charging case, illustrating the charging process for the xiwxi N09 Wireless Earbuds.

Battery Indicators:



Image: The charging case with LED indicators showing battery levels (0-25%, 25-50%, 50-75%, 75-100%).

2. Pairing with Your Device (One-Step Auto Pairing)

The earbuds are designed for quick and easy pairing.

1. Open the charging case. The earbuds will automatically power on and enter pairing mode.
2. On your smartphone, tablet, or other Bluetooth-enabled device, go to the Bluetooth settings.
3. Search for available devices and select "N09" from the list.
4. Once connected, a voice prompt will confirm "Connected," and the earbuds are ready for use.

Clear Calls With ENC Environmental Noise Cancelling (Not ANC)

4 mics effectively reduce the environmental noise and eliminate ambient noise, ensure a clear call quality.

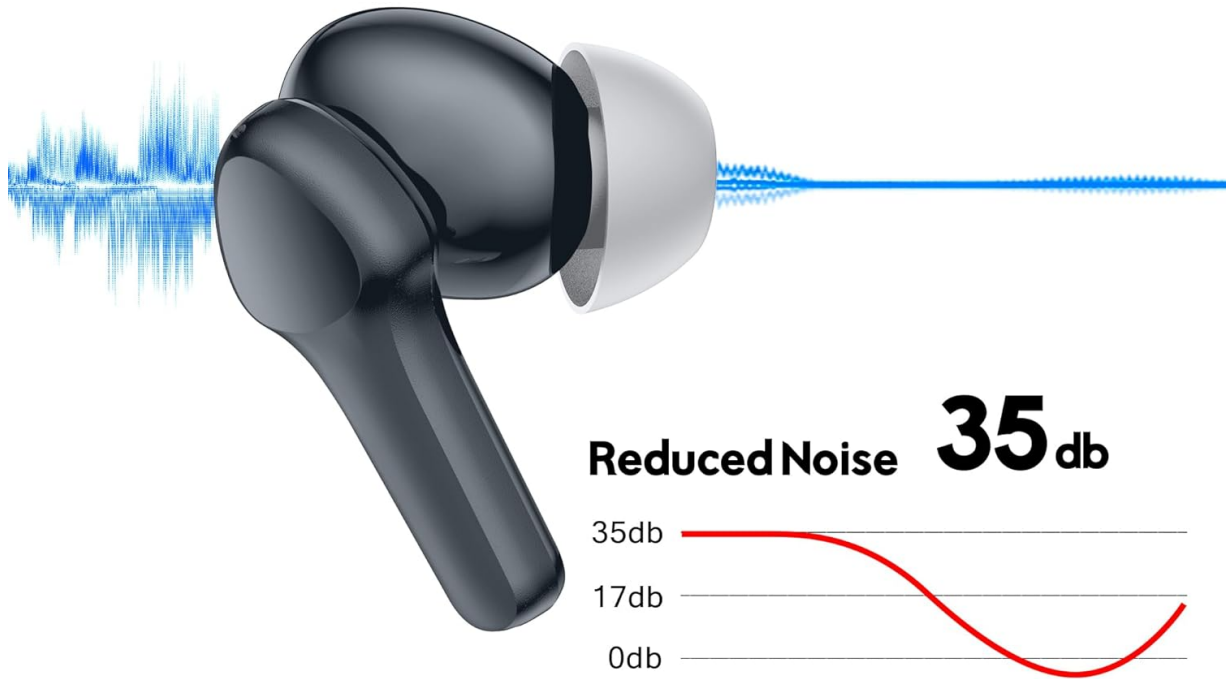


Image: A smartphone screen displaying Bluetooth settings with "N09" listed as a connected device, alongside the earbuds and charging case, demonstrating the one-step auto pairing process.

3. Wearing the Earbuds

For optimal sound quality and comfort, choose the correct ear tip size and ensure a secure fit.

- Select the ear tips that provide a snug fit in your ear canal. Experiment with the included sizes (S, M, L).
- Gently insert each earbud into your ear and rotate slightly until it feels secure and comfortable.

One Step Auto Pairing

As soon as you take your earbuds out of the case, they are paired to your Apple&Android devices instantly. Enjoy incredible sound seamlessly.

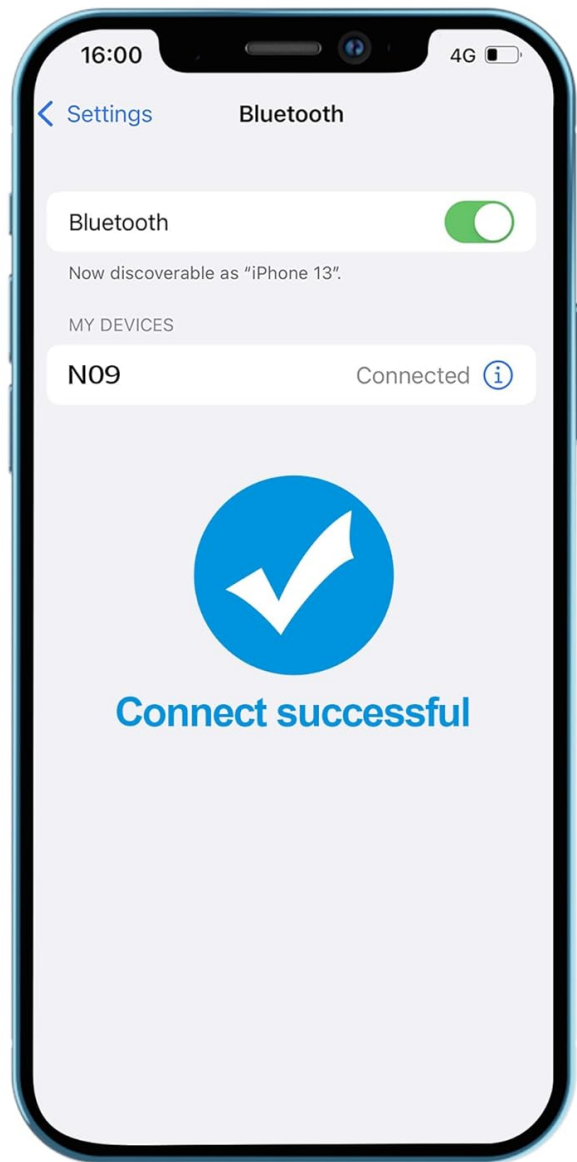


Image: A person wearing one xiwxi N09 earbud, demonstrating how the earbud fits comfortably in the ear.

OPERATING INSTRUCTIONS

The xiwxi N09 earbuds feature smart touch controls for easy management of audio and calls.



Image: A diagram illustrating the smart touch control gestures for the xiwxi N09 earbuds, showing actions like previous/next song, volume up/down, play/pause, hang up, answer call, and activate voice assistant.

Touch Control Functions

Action	Left Earbud (L)	Right Earbud (R)
Play/Pause	Hold 2s	Hold 2s
Previous Song	Double Tap (x2)	N/A
Next Song	N/A	Double Tap (x2)
Volume Up	N/A	Single Tap (x1)
Volume Down	Single Tap (x1)	N/A
Answer Call	Single Tap (x1)	Single Tap (x1)
Hang Up Call	Hold 2s	Hold 2s
Activate Voice Assistant (Siri/Google Assistant)	Triple Tap (x3)	Triple Tap (x3)

Note: Some functions may vary slightly depending on your connected device and operating system.

MAINTENANCE

Water Resistance (IPX8)

The xiwxi N09 earbuds are rated IPX8 waterproof, making them resistant to sweat, water splashes, and rain. This makes them suitable for workouts and outdoor activities.

- **Important:** The charging case is **not** waterproof. Do not expose the charging case to water or moisture.
- Ensure earbuds are completely dry before placing them back into the charging case to prevent damage.

Water Resistant with IPX8 Rating

Reinforced design for sweat & water resistance during tough workouts or running (The charging case is not waterproof)



Image: xiwxi N09 earbuds shown with water splashes, illustrating their IPX8 water-resistant capability for sweat and rain.

Cleaning

Regular cleaning helps maintain performance and hygiene.

- Wipe the earbuds and charging contacts with a soft, dry, lint-free cloth.
- Remove ear tips and clean them with mild soap and water, then dry thoroughly before reattaching.
- Avoid using abrasive materials or harsh chemicals.

TROUBLESHOOTING

Resetting the Earbuds

If you experience pairing issues or inconsistent performance, a reset may resolve the problem.

1. On your device, delete "N09" from your Bluetooth paired devices list.
2. Place both earbuds into the charging case.
3. Quickly tap the touch button on **each earbud 5 times simultaneously**.
4. The earbuds' indicator lights will flash red and blue for 2 seconds, indicating the memory has been cleared and they have powered off.
5. Close the charging case, then open it again to re-enter pairing mode and reconnect with your device.

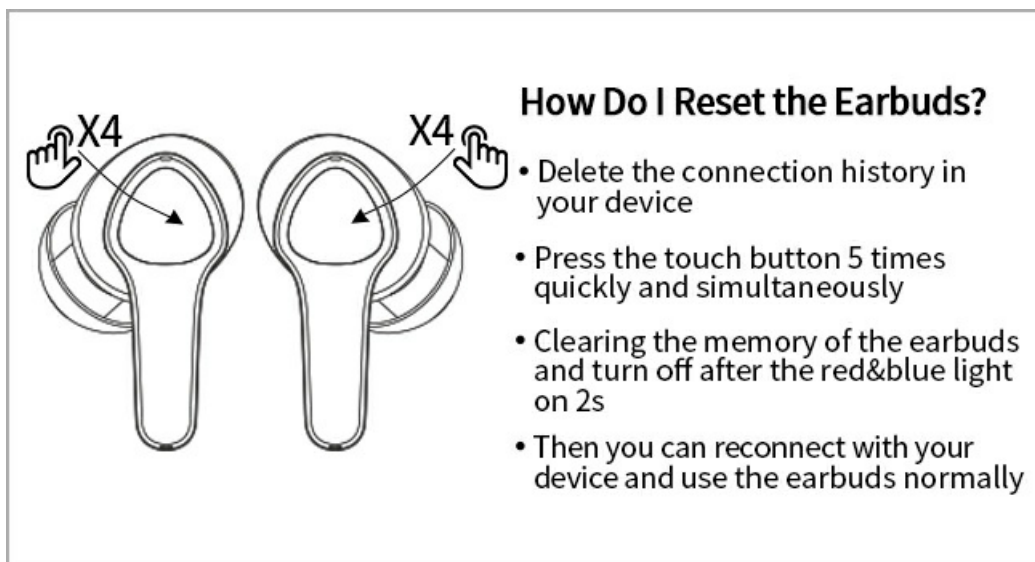


Image: A visual guide demonstrating the 5-tap reset procedure for the xiwxixi N09 earbuds, including deleting device history and observing LED indicators.

Common Issues

- **Earbuds not pairing:** Ensure both earbuds are charged, delete previous pairings on your device, and try the reset procedure.
- **Only one earbud working:** Place both earbuds back in the case, close it, then open it again. If the issue persists, perform a reset.
- **Poor sound quality:** Ensure earbuds are properly seated in your ears with the correct ear tip size. Check for debris in the earbud nozzles.
- **Earbuds not charging:** Clean the charging contacts on both the earbuds and the case. Ensure the charging cable is securely connected.

SPECIFICATIONS

Feature	Detail
Brand	xiwxixi
Model Name	N09
Connectivity Technology	Wireless (Bluetooth 5.3)
Bluetooth Version	5.3
Bluetooth Range	10 Meters
Water Resistance Level	IPX8 (Earbuds only)
Noise Control	Environmental Noise Cancelling (ENC) for calls
Audio Driver Type	Dynamic Driver (10mm)
Battery Life (Earbuds)	Up to 6 hours on a single charge
Total Battery Life (with Case)	Up to 30 hours
Charging Time	Approx. 1.5 hours

Feature	Detail
Charging Port	USB-C
Control Type	Smart Touch Control
Microphones	4 Mics for Call Noise Cancelling
Material	Silicone (ear tips)
Item Weight	2.39 ounces (total package)
Compatible Devices	Smartphones, Tablets, Laptops, Desktops, Gaming Consoles (Bluetooth enabled)

SAFETY INFORMATION

- Do not disassemble or modify the product.
- Keep away from extreme temperatures and direct sunlight.
- Avoid prolonged listening at high volumes to prevent hearing damage.
- Do not use the earbuds in situations where inability to hear ambient sounds could be dangerous (e.g., driving, cycling, walking in traffic).
- Dispose of batteries and electronic components responsibly according to local regulations.

WARRANTY AND SUPPORT

For warranty information or technical support, please refer to the contact details provided with your purchase or visit the official xiwxi website. Keep your proof of purchase for warranty claims.