



[Manuals.plus](#) /

> [mangoal](#) /

> Mangoal Front 4K & Rear 1080P Dash Cam User Manual

mangoal MG-032D

Mangoal Front 4K & Rear 1080P Dash Cam User Manual

Model: MG-032D (Model A) | Brand: Mangoal

[Overview](#) [Contents](#) [Compatibility](#) [Setup](#) [Operation](#) [Maintenance](#) [Troubleshooting](#) [Specifications](#) [Warranty & Support](#)

1. PRODUCT OVERVIEW

The Mangoal Front 4K & Rear 1080P Dash Cam (Model A) is a custom-fit, OEM-style dash camera system designed for select Ford F-Series trucks. It provides high-resolution video recording for both front and rear views, ensuring comprehensive coverage for your vehicle. Key features include seamless loop recording, G-sensor for incident detection, 24-hour parking monitoring (with optional hardwire kit), and convenient mobile app connectivity via Wi-Fi.

Key Features:

- **Front 4K & Rear 1080P Recording:** Captures crystal-clear video footage.
- **OEM Style Integration:** Designed to fit perfectly behind the rearview mirror, minimizing visible wires and maintaining an original factory look.
- **Loop Recording:** Automatically overwrites the oldest footage when the memory card is full, ensuring continuous recording.
- **G-Sensor:** Detects sudden impacts or collisions and automatically locks the current video file to prevent overwriting.
- **Parking Monitor:** Provides 24-hour surveillance when the vehicle is parked (requires optional OBD or Fuse Box Power Adapter).
- **Built-in Wi-Fi & App Control:** Allows for real-time video viewing, downloading, and sharing via a dedicated mobile application.
- **128GB MicroSD Card Included:** Ready to use out of the box with ample storage.

2. PACKAGE CONTENTS

Please check the box for the following items:

- Mangoal OEM Look 4K Dashcam x1
- 128G MircoSD Card x1

- Rear Cam x1
- Rear Cam Cable x1
- User Manual x1
- Auto-Dimming Plug Adapter Cable x1
- Crowbar x1
- Strap x2
- T20 Star Screwdriver x1
- T25 Star Screwdriver x1

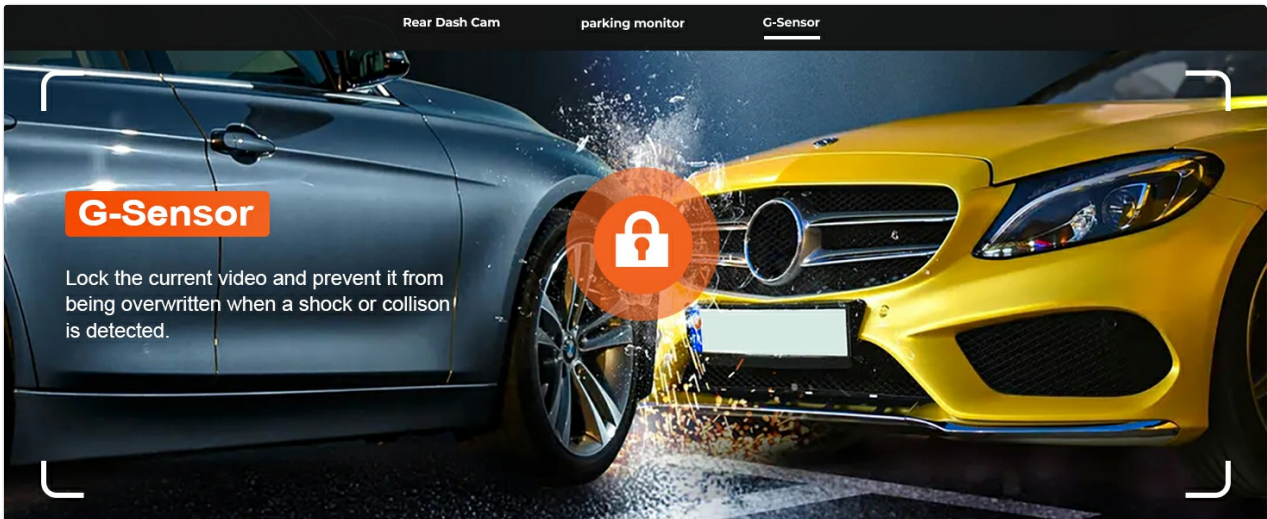


Figure 2.1: All components included in the package.

3. VEHICLE COMPATIBILITY

This Mangoal dash cam (Model A) is specifically designed for a custom fit in the following Ford F-Series vehicles:

- Ford F150: 2018-2025
- Ford F150 Lightning: 2022-2025
- Ford F250/F350 Super Duty: 2020-2025

Compatible trims include XLT, Lariat, King Ranch, Tremor, Raptor, Limited, and Platinum.

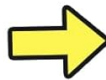
Important Note:

- Your car must have an Auto-Dimming Rearview Mirror Plug Power Adapter. If not, alternative power options like Rainfall Sensor Power Adapter (search B0DPP8HPZ8 or B0DPPLG972) are available.
- For parking monitor functionality, an OBD Power Adapter (asin: B0CVTKTGVY) or Fuse Box Power Adapter (asin: B0CXXXV4YG) is required.

Before



After



OEM STYLE, HIDE EXTRA WIRES

No need to replace the mirror. Easy installation with video tutorial.

Figure 3.1: Model A compatibility for Ford F-Series trucks.

(PLEASE NOTE)

The goods in stock are all the latest version of the software, and you can manually set the startup tone to turn off

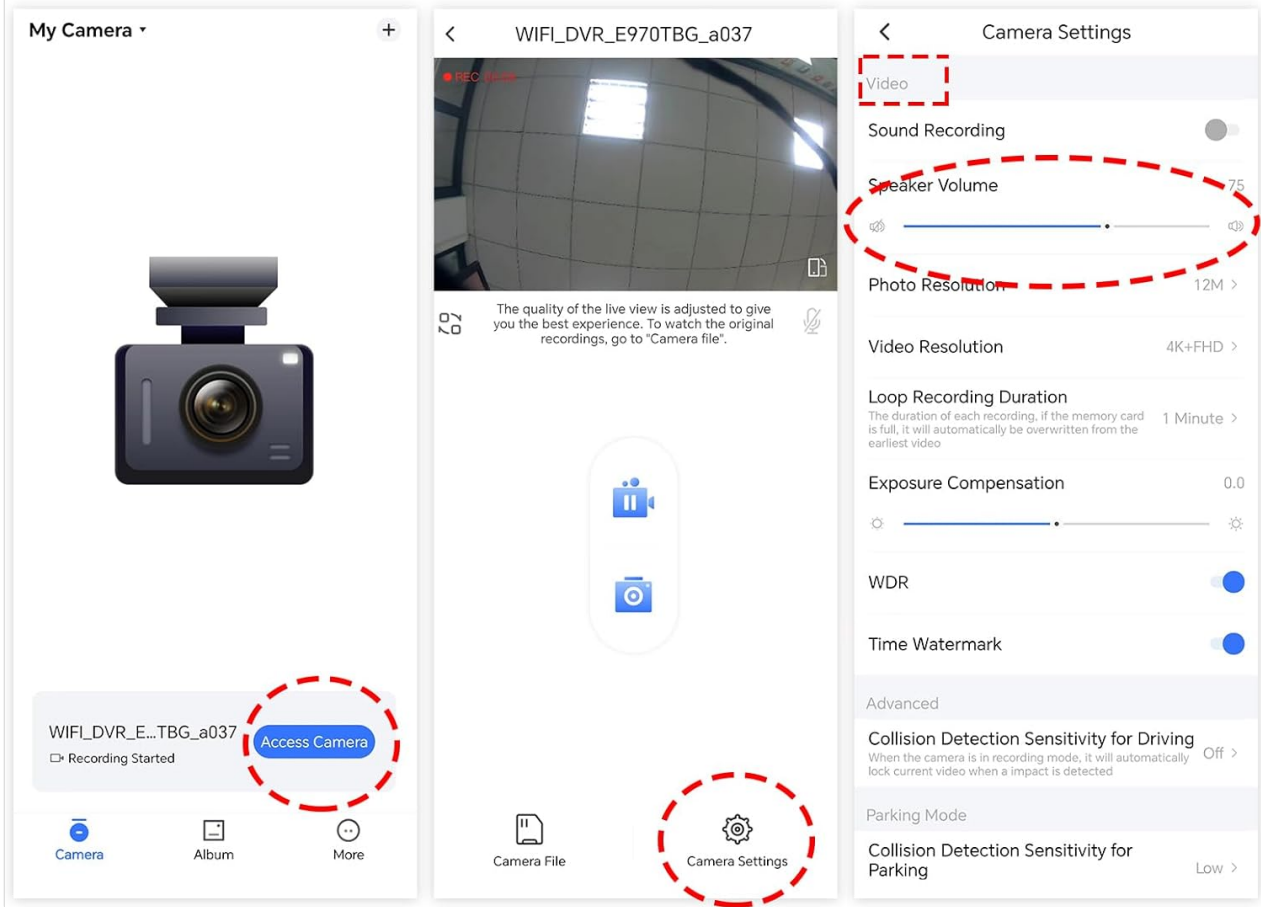


Figure 3.2: Guide to distinguish Ford F-series models for dash cam fitment.

4. SETUP AND INSTALLATION

4.1 Front Dash Cam Installation

The front dash cam is designed for a discreet, OEM-style installation behind your rearview mirror. Follow these steps for a clean setup:

1. **Remove Original Screw:** Carefully remove the existing screw holding the rearview mirror assembly.
2. **Mount Bracket:** Attach the provided dash cam bracket using the screw.
3. **Mount Dash Cam:** Securely mount the dash cam onto the bracket.
4. **Open Sensor Cover:** Use the provided crowbar tool to gently pry open the sensor cover located near the rearview mirror.
5. **Connect Y-Cable:** Connect the auto-dimming plug adapter cable (Y-cable) to the rearview mirror's power source.
6. **Replace Sensor Cover:** Carefully put the sensor cover back on, ensuring all wires are neatly tucked away.

How to distinguish FORD F-series Model A/B/C?

Models	Model A	Model B	Model C
Feature	<ul style="list-style-type: none"> Has Screw Rearview Mirror Plug Sensor Cover 	<ul style="list-style-type: none"> Has Screw/NO Screw Has Sensor Cover/NO Sensor Cover Rearview mirror plug 	<ul style="list-style-type: none"> Big Cover
Fixed Modes	Screw	3M Tape	Replace the big cover
Power	Rearview Mirror Plug	Rearview Mirror Plug	Fall-rain sensor
Years	F-150 2018-2025 & F-250/350 Super Duty 2020-2025 F150 Lightning 2022-2025	F-150 2013-2017 & F-250/350 Super Duty 2015-2019	F150 2015-2020 & F250/350 Super Duty 2017-2019

* Mangoal integrated dash cams are only compatible with specific vehicle styles, the wrong styles can't fit.if stil not sure ,please confirm with us.

Figure 4.1: Front Dash Cam Installation Steps.

Parking Monitor

Auto switch to Parking Mode and start to rccordinstantly providing 24H protection for your car.



* Parking monitor must have "OBD PowerAdpter" (asin:B0CVTKTGVY) or "Fuse Box Power Adpter"(asin:B0CXXXV4YG)

Figure 4.2: OEM Style Installation: Before and After.

4K Clear See the Unseen

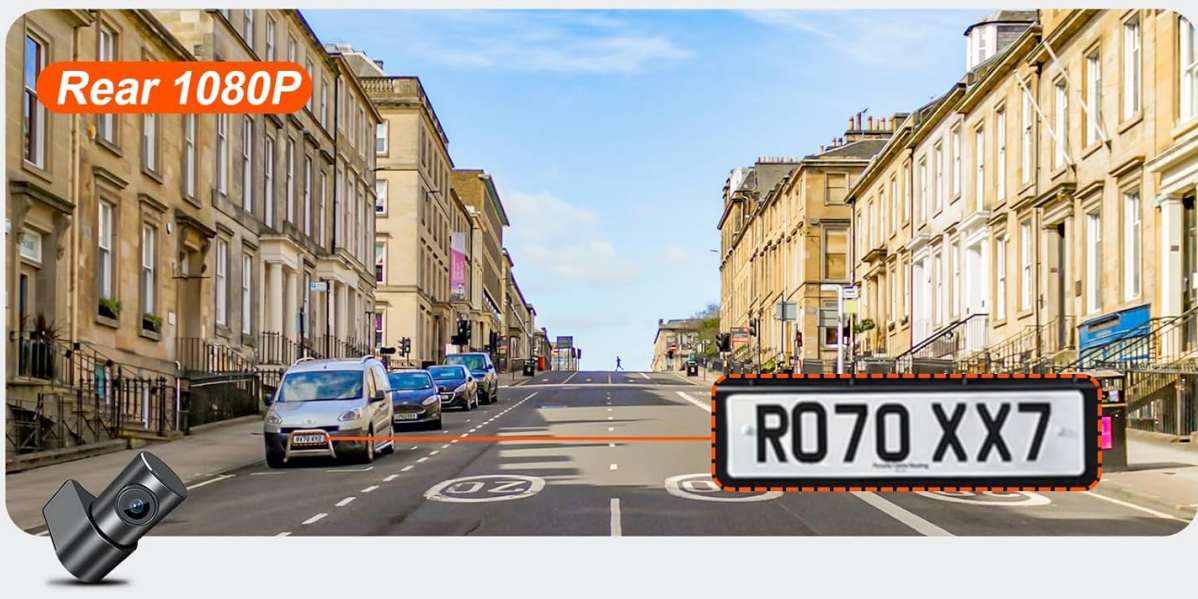


Figure 4.3: OEM Style ensures no obstruction of driver's sight.

4.2 Rear Dash Cam Installation

The rear dash cam provides a 1080P view of the rear of your vehicle. Proper routing of the cable is essential for a clean and secure installation.

1. **Connect Rear Cam Cable:** Plug the rear cam cable into the main dash cam unit.
2. **Route Cable:** Carefully route the rear cam cable along the headliner and down the side pillars to the rear of the vehicle. Use the provided car wire trim tool to tuck the wiring harness neatly into the vehicle's trim.
3. **Mount Rear Cam:** Once the cable is routed, mount the rear camera on the rear glass indoors. Ensure the lens is clean and unobstructed.
4. **Adjust Angle:** Open the "SkyCamm" APP on your phone, connect to the dash camera's Wi-Fi, and use the live preview interface to adjust the angle of the rear cam for optimal view. The rear camera supports 360° rotation for flexible positioning.

Video 4.1: Detailed installation guide for the rear camera, including wiring harness management.

Easy to Install 4K Front+1080p Rear Superior Night Vision WiFi and Free App Loop Recording

Endless Loop Recording

Every 1/3/5 min loop recording, the oldest videos will be overwritten when the SD card is full.

• Recording time for different SD cards.

32G	64G	128G
2H	4H	8H

Figure 4.4: Rear Camera 360° Rotation Adjustment.

4.3 Wiring Harness Management

To maintain the OEM look and prevent obstruction, it is crucial to hide all wiring harnesses. Use the provided crowbar and trim tools to tuck excess wires into the vehicle's headliner and pillar trim. Ensure wires are not pinched or exposed.

5. OPERATING INSTRUCTIONS

5.1 Mobile App & Wi-Fi Connectivity

The built-in Wi-Fi allows for seamless connection to the dedicated mobile app (SkyCamm). This app provides convenient access to your dash cam's features:

- **Real-time Video Preview:** View live footage from both front and rear cameras on your smartphone.
- **Video Download & Transfer:** Easily download important footage to your phone or transfer it to a PC.
- **Settings Adjustment:** Configure various camera settings directly from the app.
- **Sharing:** Share videos on social media platforms.

Easy to Install 4K Front+1080p Rear Superior Night Vision WiFi and Free App Loop Recording

See Better at Night Night Drive at Ease

Sony Sensor
 f/1.8 aperture
 WDR
 6-Layer Lens

Figure 5.1: Easy Access with the Mobile App.

5.2 Loop Recording

The dash cam features seamless loop recording. When the memory card is full, the oldest video files will be automatically

overwritten by new content, ensuring continuous recording without manual intervention. You can set loop recording durations (e.g., 1, 3, or 5 minutes) via the mobile app.

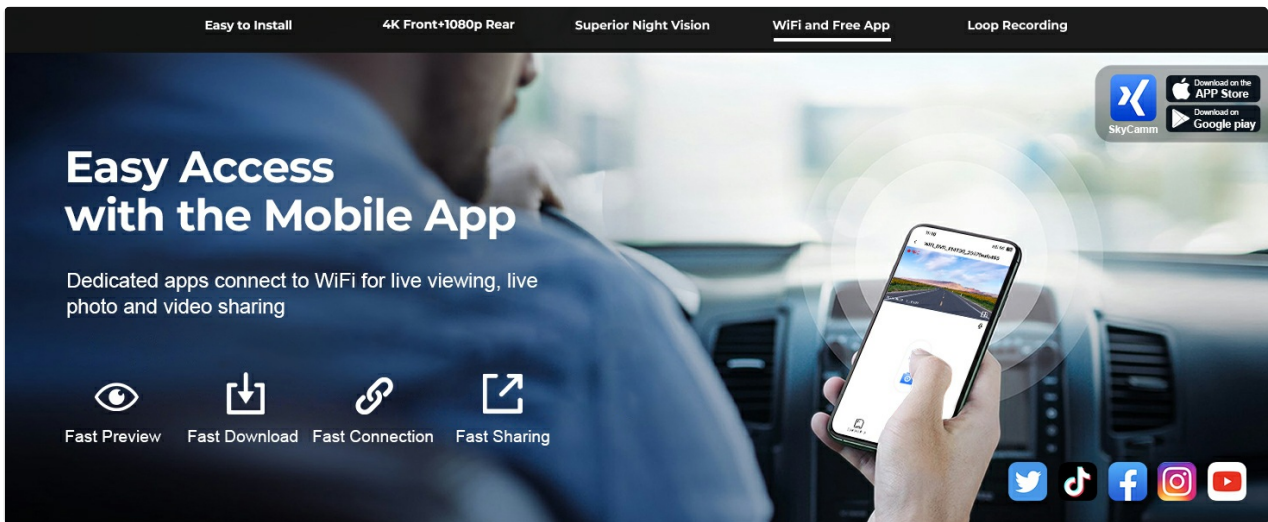


Figure 5.2: Endless Loop Recording.

5.3 G-Sensor (Automatic Incident Detection)

The built-in G-sensor detects sudden acceleration, braking, or collisions. In the event of an impact, the G-sensor automatically triggers and locks the current video segment, preventing it from being overwritten by loop recording. These locked files are stored in a separate folder for easy access.

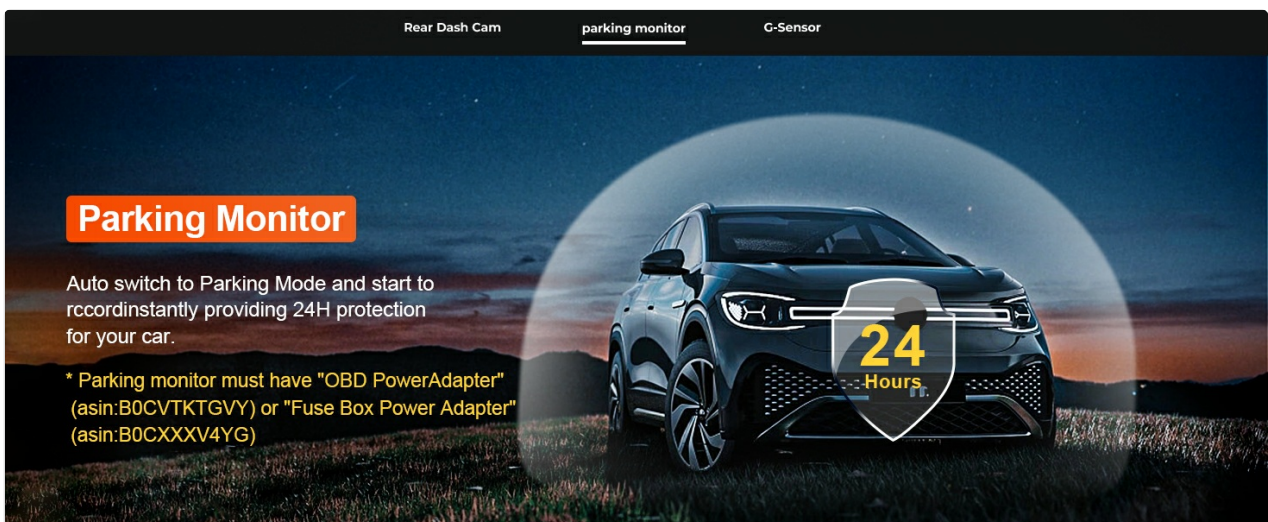


Figure 5.3: G-Sensor for Automatic Incident Detection.

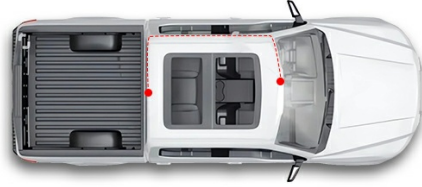
5.4 Parking Monitor

When properly connected with an optional OBD or Fuse Box Power Adapter, the parking monitor feature provides 24-hour protection for your vehicle. The dash cam will automatically switch to parking mode and begin recording if it detects motion or impact while parked.

360° rotation adjustment



Schematic diagram of the power cord routing of the rear dash cam:



* Before rear cam installation, please use the rear cam power cable to test whether it is working properly.

Figure 5.4: 24-Hour Parking Monitor.

5.5 Startup Tone Setting

The latest software version allows you to manually turn off the startup tone of the dash cam. This setting can be accessed and adjusted through the mobile application's camera settings menu.

Which vehicle styles of F-150, F-250/350 Super Duty is Model A suitable for?



- Suitable for select Ford F-150 2018-2025, F-250/350 Super Duty 2020-2025, F150 Lightning 2022-2025
- There is a plug behind the rear view mirror
- There is a screw on the rear view mirror bracket
- There is a sensor cover behind the interior rearview mirror and the wiring harness can be hidden inside.

Figure 5.5: Adjusting Startup Tone in App Settings.

6. MAINTENANCE

- **SD Card Management:** Regularly format the MicroSD card (at least once a month) to ensure optimal performance and prevent data corruption. Use the mobile app or a computer to format the card.
- **Cleaning:** Keep the camera lenses clean and free from dust, smudges, or debris to ensure clear video quality. Use a soft, lint-free cloth. Avoid abrasive cleaners.
- **Firmware Updates:** Check the manufacturer's website or the mobile app periodically for any available firmware updates to improve performance and add new features.

7. TROUBLESHOOTING

7.1 Common Issues & Solutions

- **Dash Cam Not Powering On:**
 - Ensure the Auto-Dimming Rearview Mirror Plug Power Adapter is securely connected.
 - Verify that your vehicle's rearview mirror has power.
- **Wi-Fi Connection Issues:**
 - Ensure your phone's Wi-Fi is enabled and connected to the dash cam's Wi-Fi network.
 - Restart both the dash cam and your phone.
 - Avoid special characters in your Wi-Fi password, as some systems may not support them.
-