



[Manuals.plus](#) /

› [AQUABATOS](#) /

› AQUABATOS Bathtub Screen Installation and Care Manual (120x140cm, Black Matte)

AQUABATOS 761017322256

AQUABATOS Bathtub Screen Installation and Care Manual

MODEL: 761017322256 (120x140cm, BLACK MATTE)

Introduction

Thank you for choosing the AQUABATOS Bathtub Screen. This manual provides detailed instructions for the safe installation, operation, and maintenance of your new 120x140cm black matte bathtub screen. Featuring 5mm safety glass and a NANO coating for easy cleaning, this foldable screen is designed for drill-free installation, offering a modern and practical solution for your bathroom.



Image: The AQUABATOS Bathtub Screen installed, showcasing its design and functionality.

Important Safety Instructions

- Always handle glass panels with care to prevent breakage and injury.
- Ensure all components are securely fastened before use.
- Keep children away from the installation area.
- **Adhesive Installation Warning:** Due to the strong adhesive properties, a hammer and flat chisel may be required for removal of the wall profile. Consider this before proceeding with adhesive mounting.
- The adhesive must cure for at least 24 hours. Do not move the wall profile during this time, as it will affect the adhesive bond.
- Ensure adhesive surfaces are solid, clean, dry, grease-free, wax-free, and free of release agents.
- Suitable surfaces include tiles, natural stone, glass, concrete, metal, wood, and many plastics and laminates.

- Load-bearing capacity on plaster, wallpaper, or painted surfaces is limited. Polyethylene, polypropylene, and polytetrafluoroethylene are not suitable.
- Prior testing on other surfaces is recommended. Clean surfaces with a dry, clean cloth. Do not use conventional cleaners before application. Remove release agents with pure alcohol if necessary (allow to air for one hour). For waxed natural stones, use a waxing cleaner.
- Operating temperature for adhesive: +5 °C to +40 °C. Do not use adhesive after its expiration date.

Package Contents

Please verify that all components are present and undamaged before beginning installation. If any parts are missing or damaged, please contact customer support.

- 2 x Glass Panels (5mm safety glass with black stripe decoration and NANO coating)
- 1 x Wall Profile (Black Matte)
- 1 x Folding Mechanism/Hinge Set (Black Matte)
- 1 x Bottom Seal
- 1 x Adhesive Tube
- Installation Hardware (screws, anchors - for optional screw fixation)
- Instruction Manual

Setup (Installation)

This bathtub screen is designed for drill-free adhesive installation. For enhanced stability, screw fixation is also possible.

1. Surface Preparation

1. Identify suitable wall types for adhesive installation. Refer to the image below for guidance.
2. Ensure the chosen wall surface is solid, clean, dry, and free from grease, wax, or release agents. Wipe the surface with a clean, dry cloth.
3. If using alcohol to remove release agents, allow the surface to air dry for one hour.

Types de murs pour l'installation adhésive



Types de murs contre l'installation adhésive

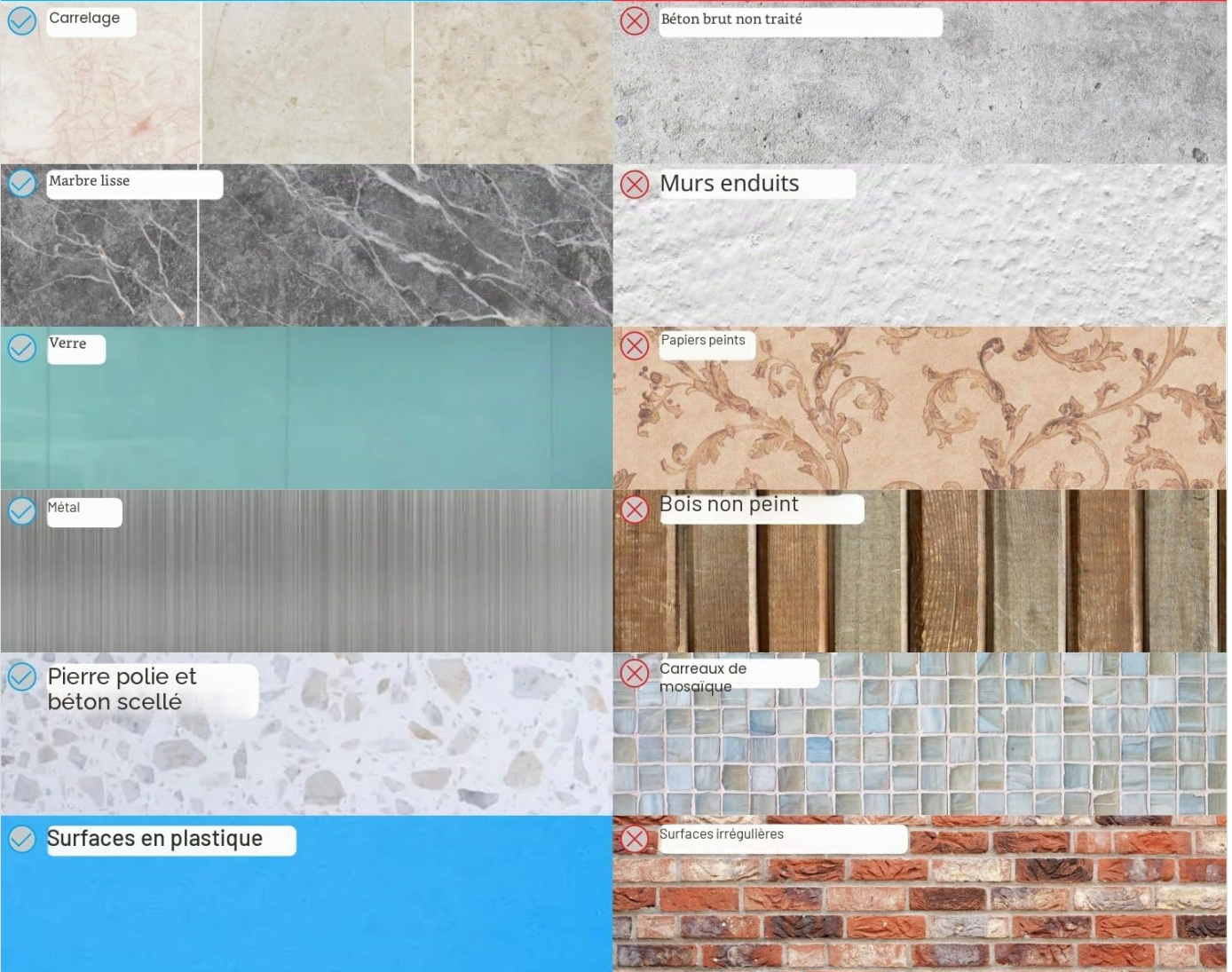


Image: Guide to suitable and unsuitable wall surfaces for adhesive mounting.

2. Wall Profile Installation (Adhesive Method)

1. Measure and mark the desired position for the wall profile on your bathtub wall. Ensure it is level and at the correct height (140 cm from the bathtub edge).
2. Apply the provided adhesive in a continuous bead along the back of the wall profile.



Image: Applying adhesive to a mounting profile.

1. Press the wall profile firmly against the marked position on the wall. Hold it in place for a few minutes to ensure initial adhesion.
2. **Important:** Do not move the wall profile for at least 24 hours to allow the adhesive to fully cure.

3. Attaching Glass Panels

1. Once the wall profile is securely fixed, attach the first glass panel to the wall profile using the provided hinge mechanism.
2. Connect the second glass panel to the first using the remaining hinge mechanism. Ensure all connections are tight and secure.



Image: Detail of the hinge connecting the glass panels.

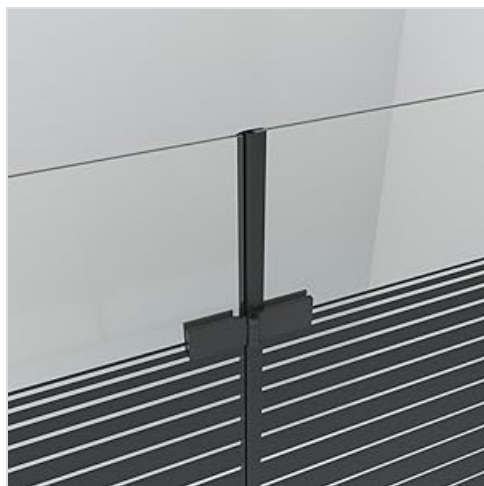


Image: Detail of the profile connection between panels.

4. Final Adjustments

1. Install the bottom seal along the lower edge of the glass panels to prevent water leakage.
2. Test the folding mechanism to ensure smooth operation.

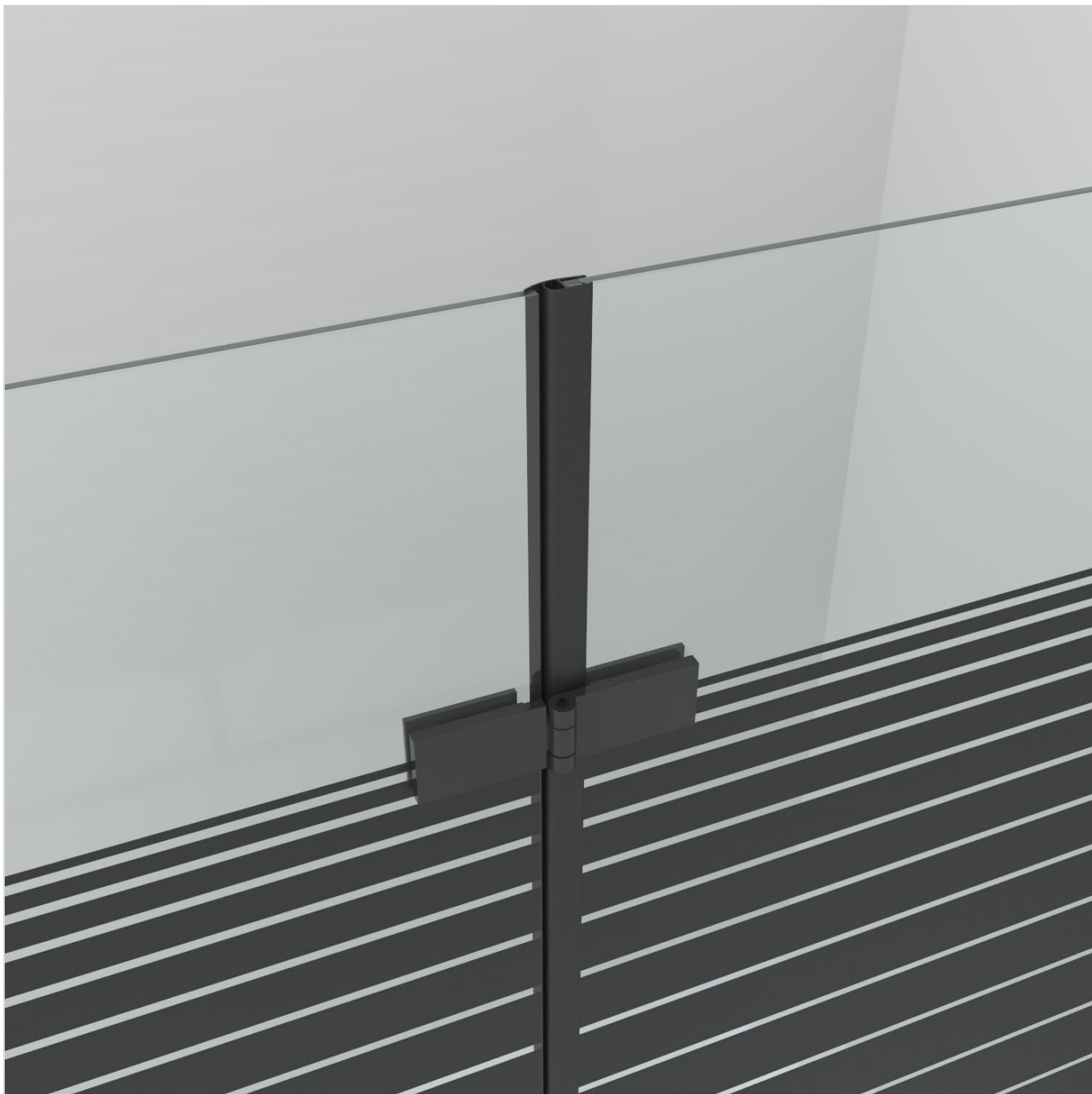


Image: The bottom profile of the screen resting on the bathtub.

Operating Instructions

The AQUABATOS bathtub screen features a convenient folding design and an integrated lifting structure for smooth operation.

Folding and Unfolding the Screen

- To open the screen, gently pull the panels outwards from the wall. The integrated pivot bearing lift/lower technology will slightly raise the glass elements, preventing friction with the bathtub.
- To close the screen, push the panels inwards towards the wall. The mechanism will gently lower them into the closed

position, creating a shower enclosure.



Image: The bathtub screen in its fully extended position.



Image: The bathtub screen in its folded position.

Maintenance

Regular cleaning and care will ensure the longevity and appearance of your AQUABATOS bathtub screen.

Cleaning the Glass Panels

- The NANO coating on the glass minimizes water droplet drying and the accumulation of dirt and limescale.
- For daily cleaning, simply wipe the glass panels with a soft cloth and warm water after each use.
- For deeper cleaning, use a mild, non-abrasive glass cleaner. Avoid harsh chemicals, abrasive sponges, or scouring powders, as these can damage the NANO coating and glass surface.

Cleaning the Profiles and Hinges

- Wipe the black matte profiles and hinges with a soft, damp cloth.

- Avoid using abrasive cleaners or solvents on the matte finish, as this can cause discoloration or damage.
- Periodically check the hinges for smooth operation and lubricate with a silicone-based spray if necessary.

Troubleshooting

Screen Not Folding Smoothly

- **Issue:** Panels feel stiff or rub against the bathtub/wall.
- **Solution:** Check for any obstructions. Ensure the integrated lifting mechanism is functioning correctly. A small amount of silicone lubricant on the pivot points may help.

Adhesive Not Holding

- **Issue:** Wall profile detaches or feels loose.
- **Solution:** This often indicates improper surface preparation or insufficient curing time. Ensure the surface was clean, dry, and free of contaminants. The adhesive requires at least 24 hours to cure without disturbance. If the adhesive fails, consider using the alternative screw fixation method for enhanced security.

Water Leakage

- **Issue:** Water escapes from under or around the screen.
- **Solution:** Check that the bottom seal is correctly installed and forms a tight barrier with the bathtub rim. Ensure all panel connections are sealed. Apply a silicone sealant along the wall profile if necessary.

Specifications

Brand	AQUABATOS
Model Number	761017322256
Dimensions (Width x Height)	120 cm (adjustable 118.5 - 120 cm) x 140 cm
Glass Thickness	5 mm
Glass Type	Safety Glass with NANO Coating and Black Stripe Decoration
Color	Black Matte
Door Style	Folding Door, Swing Door
Number of Panels	2
Installation Type	Adhesive (Drill-Free), optional screw fixation
Handle Type	Lift-up
Assembly Required	Yes

JALTAS-Serie

120 x 140 cm

Couleur du profilé noir mat

Verre de sécurité clair 5 mm

Décor à rayures horizontales

Revêtement NANO

Pare-baignoire
2 parties

DIMENSIONS :

L : 120(118,5-120) cm

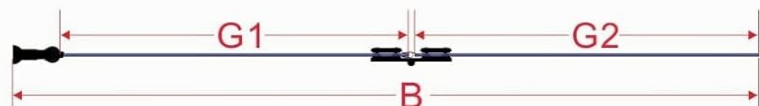
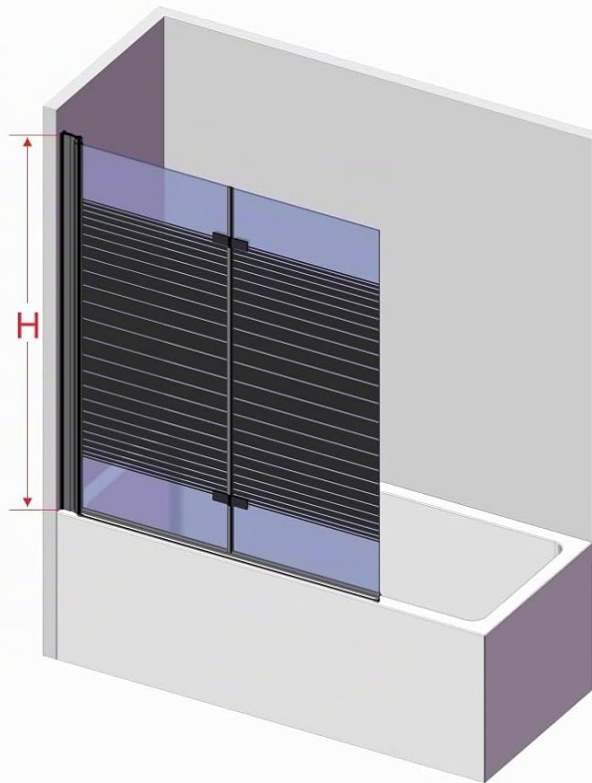
Largeur / Plage de réglage

H :

140 cm Hauteur

G1 : 55,9 cm

G2 : 55 cm Largeur du
panneau de verre



CE Geprüft nach DIN EN 14428
und DIN EN 12150

Image: Detailed dimensions of the bathtub screen.

Warranty and Support

AQUABATOS products are manufactured to high-quality standards. For specific warranty details, please refer to the documentation included with your purchase or contact your retailer. For any questions, technical assistance, or support, please reach out to AQUABATOS customer service through your purchase platform or the official brand website.