



Manuals.plus /

- › COFaR /
- › COFaR Metal Storage Cabinet (Model Mesh) - Instruction Manual

## COFaR Mesh

# COFaR Metal Storage Cabinet

MODEL: MESH

## Introduction

---

Thank you for choosing the COFaR Metal Storage Cabinet. This manual provides essential information for the safe assembly, operation, and maintenance of your new cabinet. Please read these instructions carefully before beginning assembly and retain them for future reference.

This versatile cabinet features two mesh doors and adjustable shelves, designed to offer practical storage solutions in various settings. Constructed from high-gauge cold-rolled steel, it ensures durability and a high load-bearing capacity.

## Safety Information

---

- Always assemble the cabinet according to the provided instructions.
- Do not exceed the weight limit of 80 pounds per shelf.
- Be cautious of pinch points and sharp edges when handling the metal cabinet components.
- Always use appropriate safety gear, such as gloves, when assembling or moving the cabinet.
- Ensure the cabinet is placed on a level surface and the adjustable feet are properly set for stability.

## Package Contents

---

Before assembly, verify that all parts are present and undamaged. Refer to the included parts list in your package for detailed identification.

- Top Panel
- Bottom Panel
- Side Panels (2)
- Back Panel
- Adjustable Shelves (2)
- Mesh Doors (2)
- Door Handles (2)

- Adjustable Feet (4)
- Hardware Kit (screws, wrench, gloves)

## Assembly Instructions

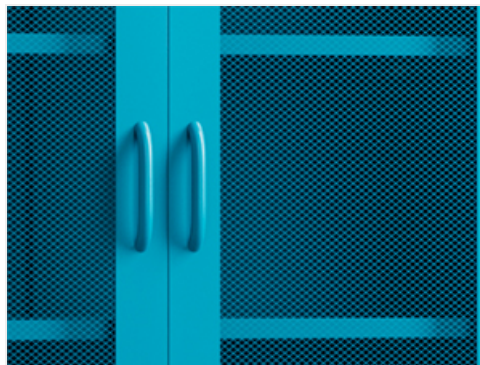
---

Follow these steps to assemble your COFaR Metal Storage Cabinet. All parts are labeled with letters for easy identification, as shown in the included instructions.

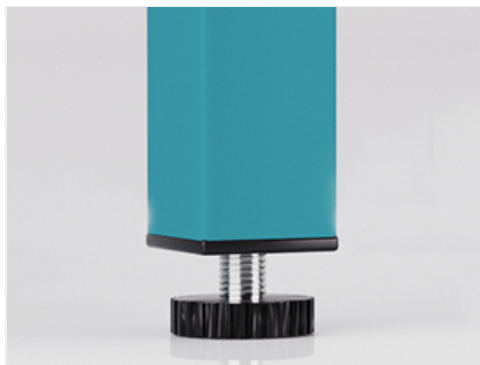
1. **Unpack Components:** Carefully remove all parts from the packaging. Lay them out on a clean, soft surface to prevent scratches.
2. **Assemble Base Frame:** Attach the side panels to the bottom panel using the provided screws. Ensure all connections are secure.
3. **Install Back Panel:** Slide or attach the back panel into the designated grooves or screw points on the side and bottom panels.
4. **Attach Top Panel:** Secure the top panel to the assembled frame.
5. **Insert Adjustable Shelves:** Place the adjustable shelves into the desired height slots. The shelves can be repositioned later to accommodate items of varying sizes.
6. **Attach Doors:** Mount the mesh doors to the cabinet frame using the hinges and screws provided. Ensure they swing freely.
7. **Install Door Handles:** Attach the handles to the mesh doors.
8. **Adjust Feet:** Screw in the adjustable feet to the bottom of the cabinet. Adjust them to level the cabinet on uneven floors and prevent scratching.

Your browser does not support the video tag.

**Video:** This video demonstrates the assembly process for the COFaR Metal Storage Cabinet, showing how to connect the main panels, install shelves, and attach the doors. The video features an orange cabinet, but the assembly steps are identical for all colors.



**Image:** Detail of the mesh door, highlighting its design and construction.



**Image:** Close-up of an adjustable foot, designed to protect floors and ensure stability.

# Operating Instructions

---

## Adjustable Shelves

The cabinet includes two adjustable shelves. To change their height, simply lift the shelf, remove the support pins from the side panels, reposition them to the desired height, and then place the shelf back onto the pins. This allows for customized storage configurations to fit various items.

## Magnetic Door Closure

The mesh doors are equipped with a magnetic closure system, ensuring they remain securely shut when not in use. To open, gently pull the handle. To close, push the door until the magnet engages.

## Care and Maintenance

---

- **Cleaning:** The powder-coated steel surface is easy to clean. Use a soft, damp cloth with mild soap and water. Avoid abrasive cleaners or harsh chemicals that could damage the finish. Wipe dry immediately to prevent water spots.
- **Spills:** In case of spills, wipe them up promptly with a soft cloth. The metal construction is resistant to warping, unlike wood.
- **Inspection:** Periodically check all screws and connections to ensure they remain tight. Tighten if necessary.
- **Relocation:** When moving the cabinet, lift it rather than dragging it to prevent damage to the adjustable feet and your flooring.

## Specifications

---

Feature	Detail
Brand	COFaR
Model Name	Mesh
Color	Peacock Blue
Material	Metal (High-gauge cold-rolled steel)
Product Dimensions (D x W x H)	15.8"D x 31.5"W x 40"H (40cm D x 80cm W x 101cm H)
Item Weight	17.7 Pounds
Weight Limit (per shelf)	80 Pounds
Number of Shelves	3 (2 adjustable)
Special Features	Adjustable Feet, Adjustable Shelves, Removable Shelves, Magnetic Lock Type
Mounting Type	Floor Mount (Freestanding)
Assembly Required	Yes

# Cabinet Size



Image: Detailed dimensions of the COFaR Metal Storage Cabinet.

## Troubleshooting

- **Wobbly Cabinet:** Ensure all screws are tightened. Adjust the leveling feet on the bottom of the cabinet to stabilize it on uneven surfaces.
- **Doors Not Closing Properly:** Check that the cabinet is level. Verify that the door hinges are correctly installed and tightened. Ensure no obstructions are preventing the magnetic closure from engaging.
- **Missing Parts:** If any parts are missing or damaged upon arrival, please contact customer service immediately for assistance.

## Warranty and Support

For any questions, concerns, or assistance regarding your COFaR Metal Storage Cabinet, please contact the COFaR customer service team. Refer to your purchase documentation for specific warranty details.



