

## Fortis EX20700

# Fortis EX20700 Extension Kit for Diverter Valves

## USER MANUAL

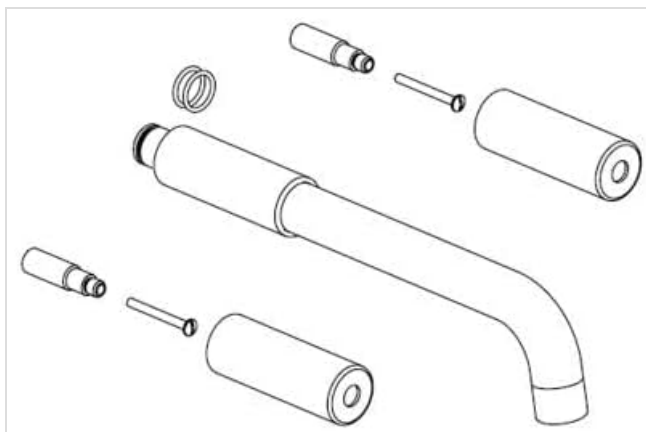
### INTRODUCTION

This manual provides instructions for the installation, operation, and maintenance of the Fortis EX20700 Extension Kit for Diverter Valves. This kit is designed to extend the reach of various Fortis valve trims, ensuring proper fit and function in specific plumbing configurations. Please read these instructions thoroughly before beginning installation.

### PACKAGE CONTENTS

Verify that all components are present before proceeding with installation. The Fortis EX20700 Extension Kit typically includes the following parts:

- Main Extension Pipe
- Extension Sleeves (2)
- Connecting Pins (2)
- Sealing Ring (1)



**Figure 1:** Exploded view of the Fortis EX20700 Extension Kit components. This image displays the main extension pipe, two extension sleeves, two connecting pins, and a sealing ring, illustrating how the parts fit together for assembly.

## SETUP AND INSTALLATION

---

This extension kit is designed to be installed with compatible Fortis diverter valves. Refer to the specific diverter valve's instruction manual for detailed valve installation steps. The following steps outline the general procedure for installing the extension kit:

1. **Preparation:** Ensure the water supply to the diverter valve is turned off. Clear the work area and have all necessary tools ready.
2. **Identify Connection Points:** Locate the points on your Fortis diverter valve trim where the extension is required.
3. **Assemble Extension:** Carefully align the main extension pipe with the valve body or existing trim component. Insert the connecting pins through the designated holes to secure the main extension pipe.
4. **Install Sleeves:** Slide the extension sleeves over the main extension pipe, ensuring a snug fit. These sleeves often provide aesthetic coverage and additional stability.
5. **Secure Connections:** Tighten any threaded connections by hand, then use an appropriate wrench for a final quarter-turn, being careful not to overtighten. Ensure the sealing ring is properly seated to prevent leaks.
6. **Test for Leaks:** Once installation is complete, slowly turn on the water supply and carefully inspect all connections for any signs of leakage. Address any leaks immediately by tightening connections or re-seating components.

If you encounter any difficulties, consult a qualified plumber.

## OPERATING

---

The Fortis EX20700 Extension Kit itself does not have operational controls. Its function is to extend the reach of your Fortis diverter valve. Operate the diverter valve according to its specific user manual. The extension kit ensures that the valve's functionality is maintained with the extended trim.

## MAINTENANCE

---

To maintain the finish and performance of your Fortis EX20700 Extension Kit:

- **Cleaning:** Clean the brushed gold finish regularly with a soft, damp cloth. Avoid abrasive cleaners, harsh chemicals, or scouring pads, as these can damage the finish.
- **Inspection:** Periodically check all connections for tightness and signs of wear. If any components appear damaged or loose, consult a professional for repair or replacement.
- **Avoid Damage:** Do not use excessive force when operating the diverter valve, as this could stress the extension components.

## TROUBLESHOOTING

---

If you experience issues after installing the Fortis EX20700 Extension Kit, consider the following:

- **Leaks at Connections:** If water leaks from the extension kit connections, ensure all components are properly seated and tightened. The sealing ring must be correctly positioned. Do not overtighten.
- **Loose Components:** If any part of the extension feels loose, re-check the connecting pins and ensure they are fully engaged.

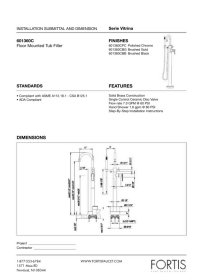
- **Difficulty Operating Valve:** If the diverter valve becomes difficult to operate after installation, verify that the extension kit is not impeding the valve's internal mechanism. Re-installation may be necessary, ensuring proper alignment.


For persistent issues, contact Fortis customer support or a qualified plumbing professional.

SPECIFICATIONS

Brand	Fortis
Model Number	EX20700
Product Dimensions (L x W x H)	1 x 1 x 1 inches
Item Weight	1 pound
Finish	Brushed Gold
UPC	650053038385

Related Documents - EX20700

	<p><a href="#">Fortis 5074406 6-Inch Ceiling Mount Shower Arm - Installation &amp; Dimensions</a></p> <p>Installation submittal and dimension details for the Fortis 5074406 6-inch ceiling mount shower arm. Features solid brass construction and multiple finishes.</p>
	<p><a href="#">Fortis 601360C Serie Vitrina Floor Mounted Tub Filler - Installation and Dimensions</a></p> <p>This document provides installation submittal and dimension details for the Fortis 601360C Serie Vitrina Floor Mounted Tub Filler. It features solid brass construction, a ceramic disc valve, and compliance with ASME and ADA standards. Key specifications and measurements are included for installation planning.</p>
	<p><a href="#">Fortis Replacement Charger for FatBro 48V 10.4Ah Electric Bikes User Guide</a></p> <p>This user guide provides safety instructions, usage guidelines, and disposal information for the Fortis Replacement Charger (FSMOCHGERDC) for Fortis FatBro 48V 10.4Ah Fat Tyre Electric Bikes.</p>

	<p><a href="#">Fortis 84690SQ CORSINI Thermostatic Valve Installation Guide and Warranty</a></p> <p>Detailed installation instructions and limited lifetime warranty information for the Fortis 84690SQ CORSINI thermostatic valve. Includes technical specifications, maintenance tips, and contact information.</p>
	<p><a href="#">Fortis Pilates Reformer Gym Machine Training Guide: Exercises &amp; Workout Plan</a></p> <p>Explore the Fortis Pilates Reformer Gym Machine with this comprehensive training guide. Learn exercises, workout progressions, and fitness tips for a balanced body and healthy lifestyle.</p>
	<p><a href="#">FORTIS Bluetooth Music Boxing Machine User Guide - FFBOXNGMUSA</a></p> <p>Comprehensive user guide for the FORTIS Bluetooth Music Boxing Machine (Model: FFBOXNGMUSA). Learn about installation, operation, charging, control panel functions, and specifications. Support available via Kogan.com.</p>