

AOCHUAN Smart XE KIT&B10&E10

AOCHUAN Smart XE Kit Gimbal Stabilizer

INSTRUCTION MANUAL

1. Introduction

Thank you for choosing the Aochuan Smart XE Kit Gimbal Stabilizer. This comprehensive kit is designed to enhance your smartphone videography and photography, providing smooth, stable footage and creative control. It includes the Smart XE 3-axis foldable gimbal, a magnetic RGB fill light, an extension rod, and a portable storage bag, making it an ideal tool for content creators, TikTokers, and anyone looking to capture professional-quality videos with their smartphone.

Please read this manual thoroughly before using the product to ensure proper operation and to maximize its potential.

2. Product Overview

2.1 Kit Contents

The Aochuan Smart XE Kit includes the following components:

- Aochuan Smart XE 3-Axis Foldable Gimbal Stabilizer
- Magnetic RGB Fill Light
- Aochuan E10 Aluminum Extension Rod
- Aochuan B20 Camera Bag
- Mini Tripod
- USB-C Charging Cable

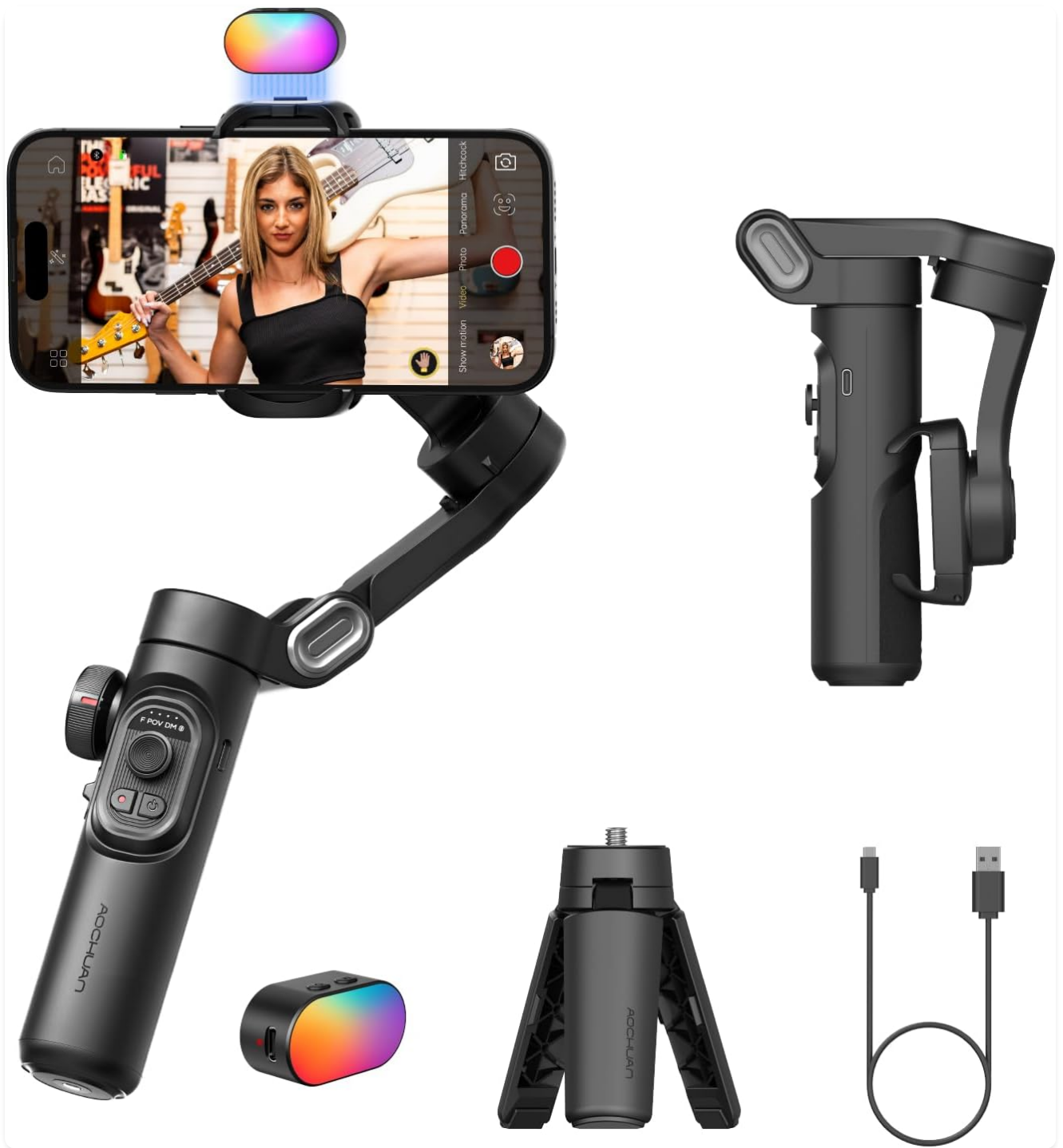


Image: Contents of the Smart XE Kit, showing the gimbal, magnetic fill light, mini tripod, and charging cable.



Image: The complete AOC HUAN Smart XE Kit, featuring the gimbal with a smartphone, the extension rod, and the portable cross-body bag.

2.2 Key Features

- **Palm-Size 3-Axis Foldable Gimbal:** Compact and portable design, compatible with most iPhone and Android smartphones, including large-screen models. Supports wireless microphones and phone lenses.
- **Magnetic RGB Fill Light:** Detachable, lightweight (22g) light with 7 RGB colors and 3 brightness levels. Provides up to 4 hours of illumination on a single charge.
- **Innovative Focus Switch and Zoom Slide:** Allows for precise focus adjustment and smooth zoom control for cinematic effects.
- **Enhanced 3 Brushless Motors:** Provides powerful and stable performance for smooth footage.
- **Extension Rod:** Adjustable aluminum rod (up to 28.7 inches) compatible with the gimbal and other camera accessories with a 1/4" screw mount.
- **Portable Camera Storage Bag:** Compactly styled bag with padded internal space for the gimbal, camera body, and lenses.
- **SMART AI 7.0 Stabilization:** Advanced stabilization technology for professional-grade smooth filmmaking.

- **SMART AI Gesture Control:** Features like "OK" gesture for start/stop face tracking, palm gestures for countdown/recording, and fist gesture for mode switching.
- **One-Tap TikTok Mode:** Quickly switch between horizontal and vertical screens for live streaming and social media content.
- **Widescreen Movie Mode:** Generates cinematic film with a wider aspect ratio.
- **AI Face Tracking & Intelligent Object Tracking:** Automatically keeps your subject in focus and centered in the frame.

2.3 Feature Visuals

SMART AI 7.0 Stabilization

Smooth Filmmaking like a Pro



Image: Details of the Magnetic RGB Fill Light, highlighting its color options, brightness levels, and battery life.



Attachable Magnetic RGB Light

The magnetic RGB light can be attached seamlessly to the Aochuan Smart XE global stabilizer for smartphone to take colorful videos at day and night.

Image: Illustration showing how the magnetic RGB light attaches seamlessly to the Aochuan Smart XE gimbal.

3 Levels for Adjustable Brightness

The brightness of RGB fill light can be adjusted in three levels to meet your different lighting needs.



Image: Visual representation of the three adjustable brightness levels for the RGB fill light, demonstrating its versatility in different lighting conditions.

Superb Long Standby battery life

The magnetic fill light can last for 180 minutes, and the longer battery life can benefit your all-star video creation.

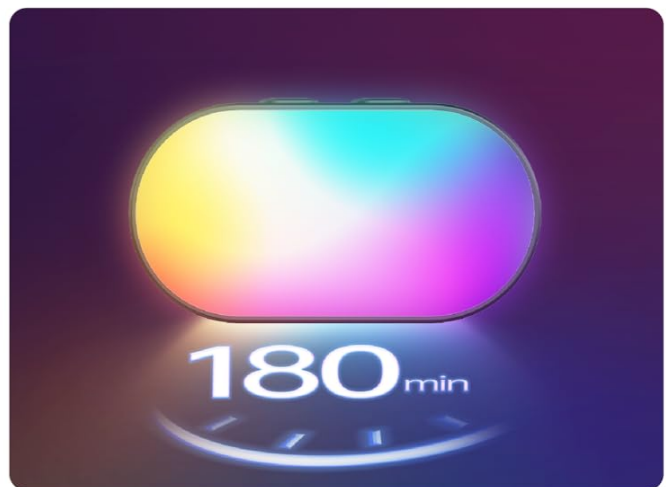
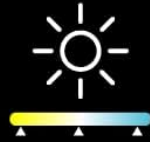


Image: An icon indicating the magnetic fill light's battery life of 180 minutes, emphasizing its long-lasting performance.

Enlight Every Shot with RGB Magnetic Fill Light



7 RGB
colors



3 levels
of brightness



Long-lasting
3-hour battery life



Image: A smartphone mounted on the gimbal capturing a smooth video of a skier, illustrating the SMART AI 7.0 Stabilization feature.

SMART AI Gesture Control



AOCHUAN



OK gesture: Start/Stop Face Tracking



Face/Subject/Body Tracking



Palm Gestures:
Countdown for 3s to start / stop recording

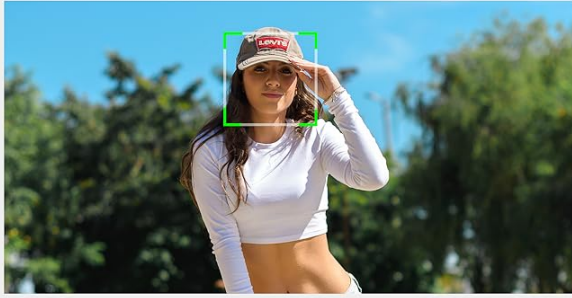


Switch between portrait / landscape



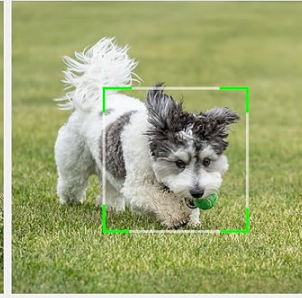
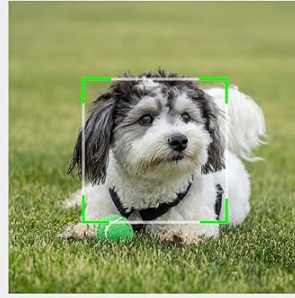
Fist gesture: Toggle Video/Photo Mode

Image: A visual guide to SMART AI Gesture Control, demonstrating various hand gestures for controlling the gimbal, such as OK gesture for tracking, palm gestures for countdown, and fist gesture for mode switching.



AI Face Tracking

Always keep your face focused in the frame.



Intelligent Object Tracking

Lock your selected target for tracking through our innovative AI SMART 4.0 Track technology.

Image: Examples of AI Face Tracking and Intelligent Object Tracking, showing how the gimbal keeps a person's face or a moving object in focus within the frame.



Remote Gesture Control

3-Second countdown photos by palm gesture



AI Smart Track 4.0

OK gesture start or stop face tracking

Image: Illustrations of Remote Gesture Control for 3-second countdown photos and AI Smart Track 4.0 for starting or stopping face tracking with an OK gesture.

One-Tap TikTok Mode

Switch between horizontal and vertical screens in seconds. Go live-streaming with this one-tap switch TikTok mode.



Image: A visual demonstrating the One-Tap TikTok Mode, allowing quick switching between horizontal and vertical smartphone orientations on the gimbal.

Magic Focus Wheel

Smart XE comes with a focus wheel to help you focus manually, taking sharper videos and photos.



Image: A close-up of the Magic Focus Wheel on the gimbal, indicating its use for manual focus adjustment to achieve sharper videos and photos.

Zoom Slider

Zoom in and zoom out to bring the Hollywood movie effect into reality.



Image: A diagram illustrating the Zoom Slider function on the gimbal, showing how it can be used to zoom in and out for Hollywood-style cinematic effects.

Powerful 3-Axis Stabilization Performance

360° rotation movements unlock your inspiration.



Image: A comparison showing the effect of the powerful 3-Axis Stabilization, with "Before" (shaky) and "After" (smooth) examples of footage.

Adjustable RGB Colors

Light up your creativity with different lighting scenarios, cold and warm light and RGB lighting to bring out details in your footage as you wish.



CCT/RGB Light



Image: A smartphone mounted on the gimbal, illuminated by the magnetic RGB light displaying various colors, demonstrating the adjustable RGB color feature for creative lighting scenarios.

Widescreen Movie Mode

Generate Hollywood cinematic film like a pro



Image: A smartphone screen displaying a wide cinematic view, illustrating the Widescreen Movie Mode feature for generating Hollywood-style film.

PORTABLE MINI CROSS- BODY BAG



Image: A person wearing the portable mini cross-body bag, showcasing its compact design for carrying the gimbal kit.

Mini and handy, Enjoy light travel.



Image: The portable bag opened, showing the gimbal, a smartphone, and other accessories neatly stored inside, emphasizing its convenience for light travel.

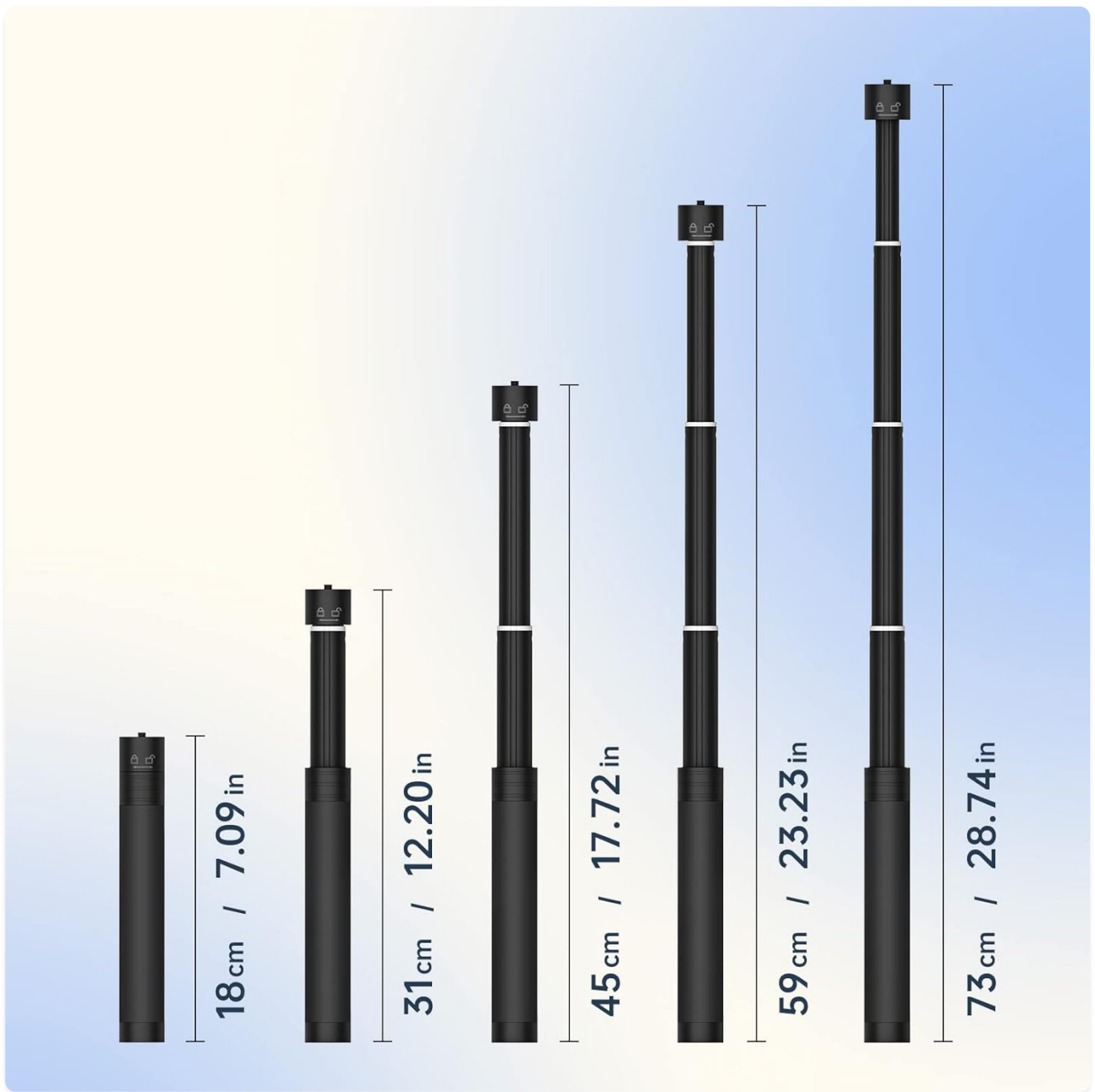


Image: A visual scale showing the adjustable lengths of the extension rod, from its compact 7.09 inches to its fully extended 28.74 inches.

Super long and solid,
Unlock more film
making possibilities.



Image: A hand holding the fully extended rod with a smartphone attached, demonstrating its use for capturing wider angles and unlocking more filmmaking possibilities.

3. Setup Guide

3.1 Unboxing and Initial Charge

1. Carefully unpack all components from the kit.
2. Before first use, fully charge the gimbal and the magnetic fill light using the provided USB-C cable. The charging port for the gimbal is typically located on the handle. The fill light has its own charging port.
3. Charging indicators will show charging status (refer to LED indicators on device).

3.2 Mounting and Balancing Your Smartphone

1. Unfold the gimbal to its operational position.

2. Ensure your smartphone is free of any thick cases that might interfere with balancing.
3. Mount your smartphone securely in the phone clamp. Ensure the phone is centered and snug.
4. **Balancing:** The gimbal needs to be balanced for optimal performance.
 - Adjust the phone's position within the clamp until it remains level when the gimbal is powered off.
 - Slight adjustments to the phone's left/right position in the clamp are usually sufficient.
 - Proper balancing reduces motor strain and extends battery life.
5. Attach the magnetic RGB fill light to the top of the phone clamp if desired.

3.3 App Installation and Bluetooth Pairing

1. Download the official AOCHUAN app from your smartphone's app store (iOS App Store or Google Play Store). Search for "AOCHUAN" or "AOCHUAN Smart XE".
2. Enable Bluetooth on your smartphone.
3. Power on the gimbal by pressing and holding the power button.
4. Open the AOCHUAN app. The app should automatically detect and prompt you to connect to the gimbal via Bluetooth. Follow the on-screen instructions to pair.
5. Once connected, you can access all smart features, including AI tracking, gesture control, and various shooting modes.

4. Operating Instructions

4.1 Basic Controls

- **Power Button:** Press and hold to power on/off. Single press to check battery level.
- **Mode Button (M):** Single press to cycle through different gimbal modes (e.g., Pan Follow, Tilt Lock, All Lock, POV). Double press for quick mode changes.
- **Joystick:** Controls the pan and tilt movements of the smartphone.
- **Record Button:** Single press to start/stop video recording or take a photo within the AOCHUAN app.
- **Focus Wheel:** Rotate to manually adjust focus for sharper images and videos.
- **Zoom Slider (T/W):** Slide up for Telephoto (zoom in) and down for Wide (zoom out).

4.2 Gimbal Modes

The Smart XE offers several stabilization modes:

- **Pan Follow (PF):** The tilt and roll axes are locked, and the pan axis follows the handle's movement. Ideal for smooth horizontal tracking shots.
- **Tilt Lock (TL):** The pan and roll axes are locked, and the tilt axis follows the handle's movement. Useful for vertical tracking.
- **All Lock (AL):** All three axes are locked, keeping the smartphone fixed in its current orientation.
- **POV (Point of View):** All three axes follow the handle's movement, providing a dynamic first-person perspective.
- **One-Tap TikTok Mode:** Quickly switches between horizontal and vertical orientations for social media content.

4.3 Smart Features (via AOCHUAN App)

- **AI Face/Object Tracking:** Select a subject on screen, and the gimbal will automatically follow it. Use the "OK" gesture to start/stop face tracking.
- **Gesture Control:**
 - **Palm Gesture:** Show your palm to initiate a 3-second countdown for photos or to start/stop recording.
 - **Fist Gesture:** Toggle between video and photo modes.
- **Widescreen Movie Mode:** Activate this mode in the app for a cinematic aspect ratio.
- **Time-lapse, Motion-lapse, Hyper-lapse:** Explore advanced shooting modes within the app for creative video effects.

4.4 Magnetic RGB Fill Light Operation

- Attach the light magnetically to the top of the phone clamp.
- Press the button on the light to cycle through brightness levels (3 levels).
- Press and hold the button to change RGB colors (7 colors available).

4.5 Extension Rod Usage

- Unscrew the mini tripod from the bottom of the gimbal handle.
- Screw the extension rod into the 1/4" thread at the bottom of the gimbal.
- Extend the rod to your desired length. The rod can extend up to 28.7 inches.
- The mini tripod can be attached to the bottom of the extension rod for added stability.

5. Maintenance

- **Cleaning:** Use a soft, dry cloth to clean the gimbal and accessories. Do not use liquid cleaners or solvents.
- **Storage:** When not in use, fold the gimbal and store it in the provided storage bag to protect it from dust and damage. Store in a cool, dry place.
- **Battery Care:**
 - Charge the battery fully at least once every three months to prevent over-discharge, even if not in use.
 - Avoid exposing the device to extreme temperatures.
- **Avoid Overloading:** Do not exceed the maximum payload capacity of 250 grams for the gimbal.

6. Troubleshooting

Problem	Possible Cause	Solution
Gimbal is shaky or vibrates.	Smartphone is not properly balanced.	Ensure the smartphone is centered and balanced in the clamp before powering on the gimbal. Re-balance if necessary.

Problem	Possible Cause	Solution
Cannot connect to the AOCHUAN app via Bluetooth.	Bluetooth is off, app permissions, or gimbal not in pairing mode.	Ensure Bluetooth is enabled on your phone. Restart the gimbal and the app. Check app permissions for Bluetooth access.
Gimbal does not power on.	Low battery.	Charge the gimbal fully.
AI tracking is not working.	Poor lighting, subject too far/close, or app issue.	Ensure adequate lighting. Keep subject within optimal range. Restart the app and gimbal. Ensure app permissions for camera are granted.
Magnetic fill light not working.	Low battery or not properly attached.	Charge the fill light. Ensure it is securely attached to the magnetic mount.

If you encounter issues not listed here, please refer to the official AOCHUAN support resources or contact customer service.

7. Specifications

Feature	Detail
Brand	AOCHUAN
Model	Smart XE KIT&B10&E10
Compatible Devices	Cellphones (iPhone, Android)
Item Weight (Gimbal)	8.8 ounces (250 Grams)
Maximum Weight Recommendation	250 Grams
Product Dimensions (Unfolded)	2.55"D x 10.7"W x 2.55"H (273x125x65cm)
Folded Size	10.7 inches (l) x 4.92 inches (w) x 2.55 inches (h)
Color	Black
Extension Rod Length	Up to 28.7 inches (73 cm)
Magnetic Fill Light Battery Life	Up to 4 hours (180 minutes)

8. Warranty and Support

AOCHUAN products typically come with a standard manufacturer's warranty. For specific warranty terms and conditions, please refer to the warranty card included with your product or visit the official AOCHUAN website.

For technical support, troubleshooting assistance, or any inquiries regarding your AOCHUAN Smart XE Kit, please contact AOCHUAN customer service through their official website or the contact information provided in your product packaging. You can also visit the [AOCHUAN Store on Amazon](#) for additional resources.