



Manuals.plus /

› Veise /

› Veise KS02B and KS01B Keyless Entry Door Lock User Manual

Veise KS02B, KS01B

Veise KS02B and KS01B Keyless Entry Door Lock User Manual

Models: KS02B, KS01B

INTRODUCTION

This manual provides comprehensive instructions for the installation, operation, and maintenance of your Veise KS02B and KS01B Keyless Entry Door Lock with Handle. Please read this manual thoroughly before installation and use to ensure proper function and longevity of your lock. This smart lock offers multiple unlocking methods including fingerprint, passcode, one-time codes, and traditional keys, enhancing security and convenience for your home or office.

PACKAGE CONTENTS

Verify that all components listed below are included in your package:

- Keypad Door Lock Unit (Exterior)
- Interior Lever Handle Unit
- Physical Keys (2 spare keys)
- Mounting Hardware (screws, bolts)
- Strike Plate
- Latch Bolt
- Installation Template
- User Manual (this document)



Image: Overview of the Veise KS02B and KS01B keyless entry door locks, showing both the keypad deadbolt unit and the accompanying lever handles in an oil rubbed bronze finish. The image displays two complete lock sets, highlighting the distinct features of each model.

PRODUCT SPECIFICATIONS

Brand	Veise
Model Numbers	KS02B, KS01B
Lock Type	Keypad Deadbolt with Lever Handle
Material	Bronze
Finish	Oil Rubbed Bronze
Special Features	Keyless Entry (Fingerprint, Passcode, One-time Code), Physical Key, Auto-Lock, Backlit Keypad, Low Battery Alert, Silent Mode, Vacation Mode
Durability Rating	ANSI Grade 3 Certified, IP54 Weatherproof
Operating Temperature	-31 °F to 158 °F (-35 °C to 70 °C)
Power Source	4 x AA Batteries (not included)
Battery Life	Approximately 1 year (depending on usage)
Door Compatibility	Standard American doors, compatible with left and right-handed doors.

INSTALLATION GUIDE

Before Installation

Ensure your door meets the required dimensions for proper installation. This lock is designed for standard American doors. Verify the backset, hole diameter, and door thickness before proceeding.

Quick Installation, No Door Damage



*(2 lever handles included)



Front Door



Garage Door



Apartments

Image: A detailed diagram illustrating how to measure your door for compatibility with the Veise lock. It shows measurements for hole diameter (2-1/8" or 54mm), backset (2-3/8" or 60mm, or 2-3/4" or 70mm), and minimum distance from the edge (4" or 101.6mm). It also indicates compatibility with left-handed and right-handed doors, and notes that it is not compatible with mortise/integrated locks.

Tools Required: Phillips head screwdriver.

Installation Steps

1. **Prepare the Door:** If replacing an existing lock, remove it. Ensure the door frame is clean and the holes are correctly sized

according to the template.

2. **Install the Latch Bolt:** Insert the latch bolt into the door edge, ensuring the "UP" arrow is facing upwards. Secure it with screws.
3. **Install the Exterior Keypad Unit:** Route the cable from the exterior unit through the door hole. Align the exterior unit with the latch bolt and secure it.
4. **Install the Interior Mounting Plate:** Attach the interior mounting plate to the door, securing it with screws through the exterior unit.
5. **Connect the Cable and Install Interior Unit:** Connect the cable from the exterior unit to the interior unit. Carefully tuck the excess cable into the recess. Attach the interior unit to the mounting plate.
6. **Install the Lever Handles:** Insert the spindle through the latch bolt and attach both the interior and exterior lever handles. Secure them with the provided screws.
7. **Install Batteries:** Open the battery cover on the interior unit and insert 4 AA alkaline batteries (not included), observing polarity.
8. **Test the Lock:** After installation, test the lock's functionality using the physical key and by attempting to lock/unlock from both sides.



Image: The Veise keyless entry door lock and handle installed on a white door, showcasing its sleek design and integration into a home environment. The image highlights the keypad and fingerprint sensor on the exterior unit.

Check The Door Size Before Purchase

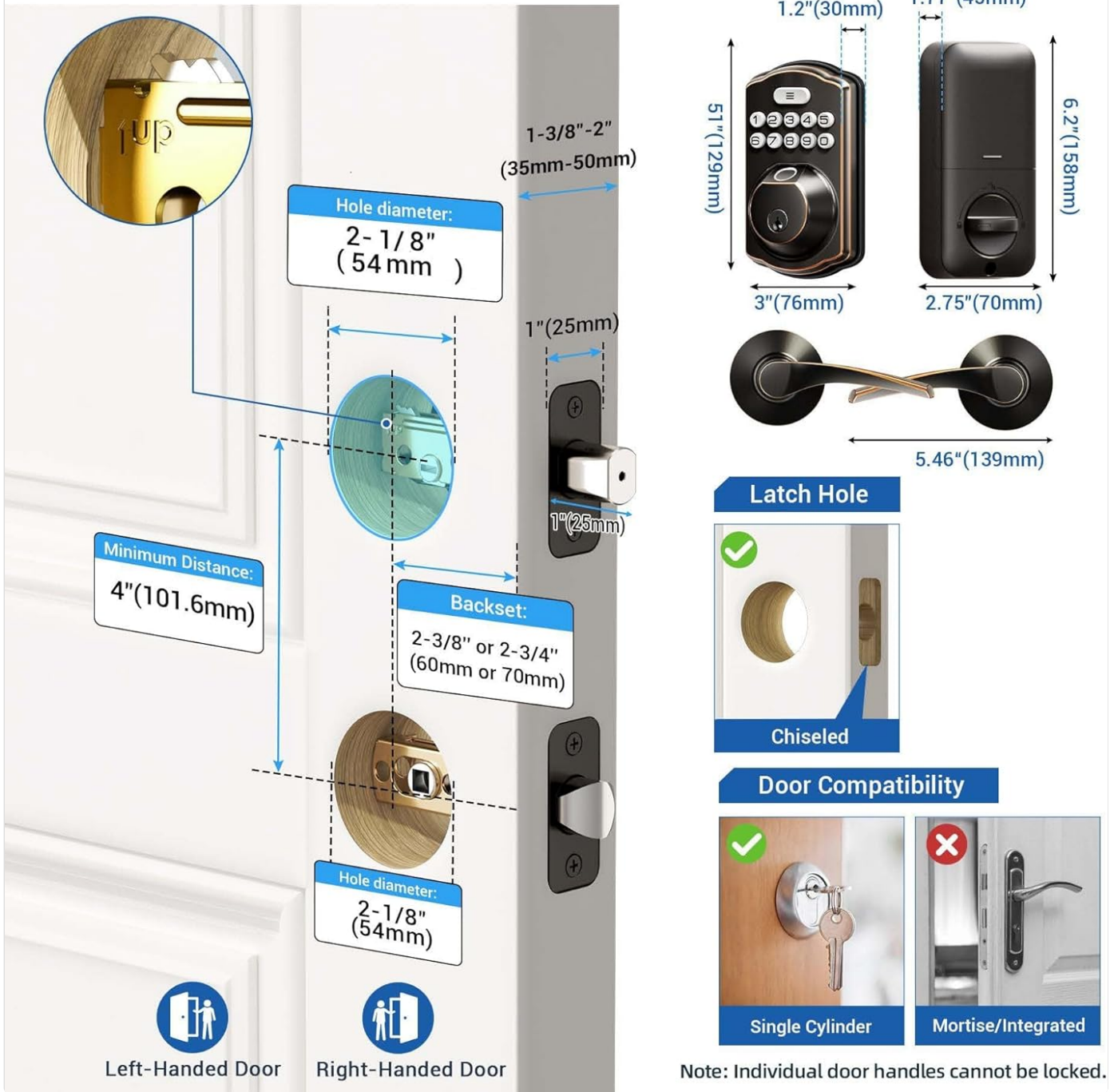


Image: A visual guide demonstrating the quick and easy installation process of the Veise door lock, emphasizing that only a screwdriver is needed and no door damage occurs. It also illustrates compatibility with both left-handed and right-handed doors, and shows the lock installed on various door types like front doors, garage doors, and apartment doors.

OPERATION

Unlocking Methods

Your Veise smart lock offers multiple convenient ways to unlock your door:

Unlock the Way You Like



Image: This graphic illustrates three primary ways to unlock the Veise door lock: using a one-time code, user codes (up to 20), and traditional keys. The lock is shown installed on a door, highlighting the keypad and keyhole.

4 Ways to Unlock



Image: A comprehensive visual showing four distinct methods to unlock the Veise smart lock: fingerprint (up to 20), one-time code, user codes (up to 20), and physical keys (2 spare keys). The image also suggests scenarios for each method, such as family, friends, pet sitters, and repairmen.

Fingerprint Unlock

The advanced fingerprint sensor identifies your fingerprint within 0.3 seconds, unlocking your door within 1 second with a 99.99% recognition rate. Up to 20 fingerprints can be stored.

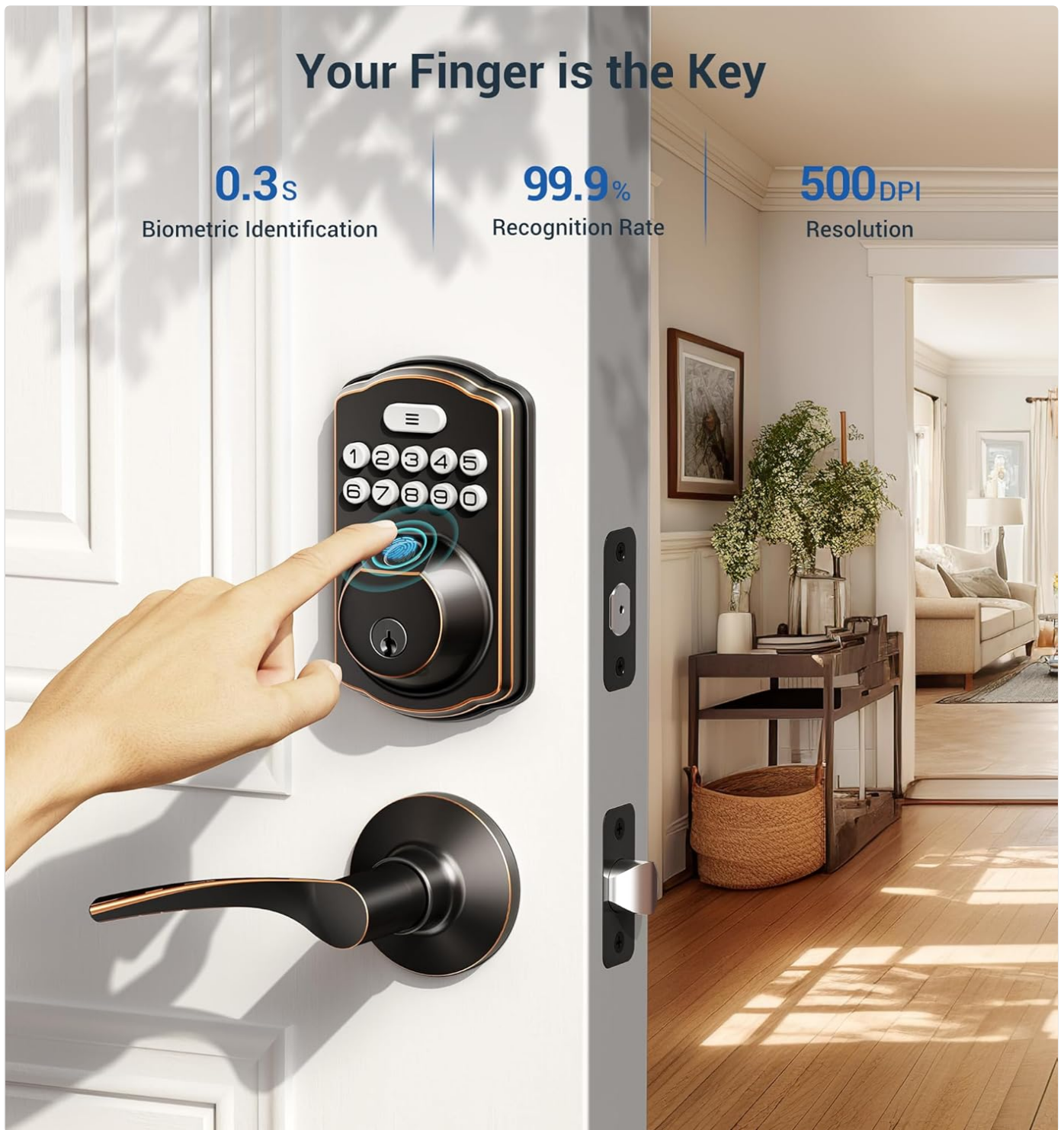


Image: A hand is shown placing a finger on the fingerprint sensor of the Veise door lock, illustrating the "Your Finger is the Key" feature. Key metrics like 0.3s Biometric Identification, 99.9% Recognition Rate, and 500DPI Resolution are highlighted.

Passcode Unlock

Enter your programmed passcode on the backlit keypad. The lock supports anti-peeking codes, allowing you to enter random digits before or after your actual code to prevent others from guessing it.

One-Time Codes

Generate temporary one-time codes for visitors or service personnel, which expire after a single use.

Key Unlock

For traditional access or in case of battery depletion, use the physical keys provided to unlock the door.

Auto-Lock Feature

The lock can be configured to automatically lock after a set period (typically 10-99 seconds) once the door is closed, providing added security and peace of mind.



Image: A person is shown entering a home with groceries, and the image highlights the auto-lock feature of the Veise smart lock, which can be set to lock automatically after 10-99 seconds. The interior view of the lock mechanism is shown in an inset.

Special Features

The Veise Keyless Entry Door Lock includes several advanced features for enhanced user experience:

- **Silent Mode:** Mute keypad tones for quiet operation.
- **Vacation Mode:** Disable all user codes and fingerprints for extended periods, requiring only physical key access.
- **Low Battery Alerts:** Visual and audible indicators notify you when batteries are running low, prompting replacement.
- **Backlit Keypad:** Ensures visibility of the keypad in low-light conditions.
- **ANSI Grade 3 Certified:** Meets high standards for residential security and durability.

- **IP54 Weatherproof:** Designed to withstand various weather conditions, protecting against dust and splashing water.

Classic Look Smart Features

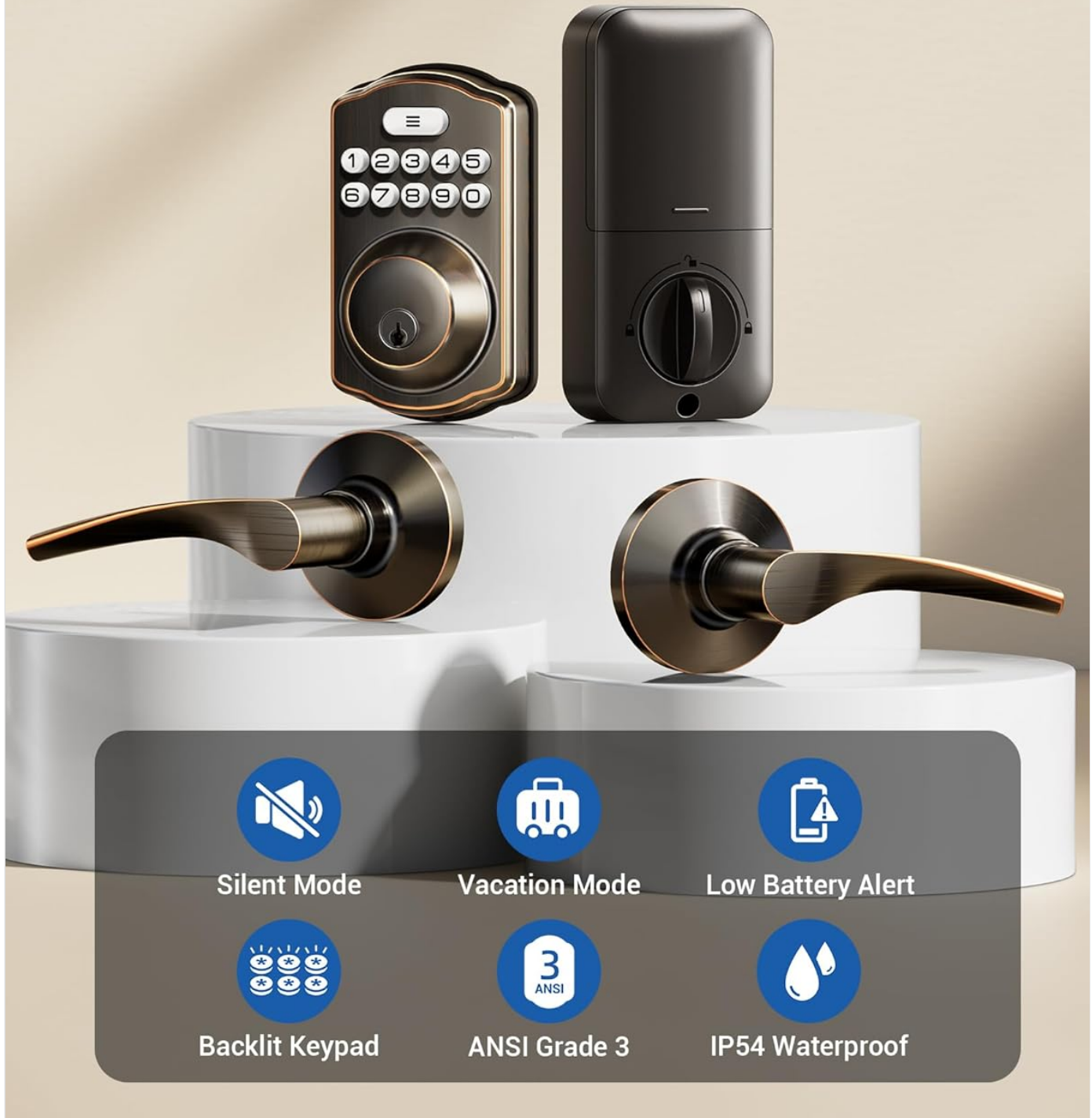


Image: This graphic showcases the "Classic Look Smart Features" of the Veise lock, including icons for Silent Mode, Vacation Mode, Low Battery Alert, Backlit Keypad, ANSI Grade 3 certification, and IP54 Waterproof rating. The lock units and handles are displayed prominently.

MAINTENANCE

- **Battery Replacement:** Replace all four AA batteries when the low battery alert is activated. Use only new, high-quality

alkaline batteries. Do not mix old and new batteries.

- **Cleaning:** Clean the lock's exterior with a soft, damp cloth. Avoid abrasive cleaners or solvents that could damage the finish or electronic components.
- **Keypad Care:** Keep the keypad free from dirt and debris to ensure proper function.
- **Fingerprint Sensor:** Gently wipe the fingerprint sensor with a clean, dry cloth if it becomes dirty to maintain optimal recognition.

TROUBLESHOOTING

Problem	Possible Cause	Solution
Lock does not respond to keypad/fingerprint.	Low batteries; incorrect code/fingerprint; system error.	Replace batteries; re-enter code/re-scan fingerprint; try physical key; reset lock (refer to programming guide).
Lock beeps continuously.	Low battery warning.	Replace all four AA batteries immediately.
Door does not lock/unlock smoothly.	Misalignment of lock components; latch bolt obstruction.	Check alignment of strike plate and latch bolt; ensure no obstructions in door frame; re-install if necessary.
Fingerprint not recognized.	Dirty sensor; improper finger placement; unregistered fingerprint.	Clean sensor; ensure full finger contact; re-register fingerprint if needed.

WARRANTY AND SUPPORT

Veise products are designed for durability and reliability. This product comes with a standard manufacturer's warranty. Please refer to the warranty card included in your package for specific terms and conditions, including coverage period and what is covered.

For technical support, troubleshooting assistance, or warranty claims, please contact Veise customer service through the contact information provided on the warranty card or visit the official Veise website. When contacting support, please have your product model number (KS02B or KS01B) and purchase date ready.

Online Resources: For additional guides, FAQs, and video tutorials, please visit the official Veise support page.