

**Manuals+**

[Q & A](#) | [Deep Search](#) | [Upload](#)

manuals.plus /

- › [Aune](#) /
- › [Aune Yuki Portable DAC with Headphone Amplifier User Manual](#)

**Aune YUKI**

# Aune Yuki Portable DAC with Headphone Amplifier User Manual

Model: YUKI | Brand: Aune



## INTRODUCTION

The Aune Yuki is a portable Digital-to-Analog Converter (DAC) with an integrated headphone amplifier, designed to enhance the audio experience for smartphones, PCs, and laptops. It features a unique dual-layer structure, separating the DAC and amplifier circuits for optimal sound quality. With support for high-resolution audio up to 32bit/768kHz and DSD256, and both 3.5mm and 4.4mm outputs, the Yuki aims to deliver a high-fidelity listening experience.

## KEY FEATURES

- **Innovative Dual-Layer Structure:** DAC and amplifier circuits are completely separated to ensure true high-

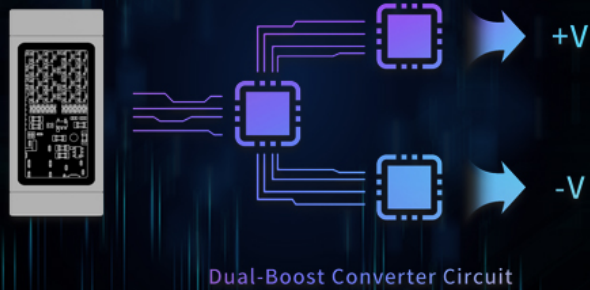
fidelity audio reproduction.

- **Discrete Headphone Amplifier:** Features a discrete headphone amp board with a  $\pm 5V$  power supply and 16 transistors for powerful 4-way amplification.
- **Dual DAC Chip:** Equipped with dual CS43198 DAC chips, providing independent channels for improved dynamics and separation.
- **High-Resolution Audio Support:** Supports audio up to 32bit/768kHz and DSD256 when connected to a computer.
- **Versatile Outputs:** Includes balanced 4.4mm and single-ended 3.5mm headphone outputs, compatible with various earphones and IEMs.
- **Ceramic Substrate:** Utilizes a ceramic substrate for excellent thermal conductivity, high electrical insulation, and resistance to high temperatures, contributing to stable sound quality.
- **High-Spec Aesthetic Tuning:** Engineered for low noise ( $2.9 \mu V$ ) and low THD+N ( $0.00033\%$  @1kHz), tuned for natural and musical sound.
- **Aesthetic Design:** Features an all-aluminum alloy structure with a fine baked painting finish and a glass window, combining art and technology.



Figure 1: Illustration of the Aune Yuki's dual DAC chip architecture with independent channels.

## The Different Headphone Amp $\pm 5V$ Boost Converter



## Hybrid Ceramic PCB Better High Frequencies

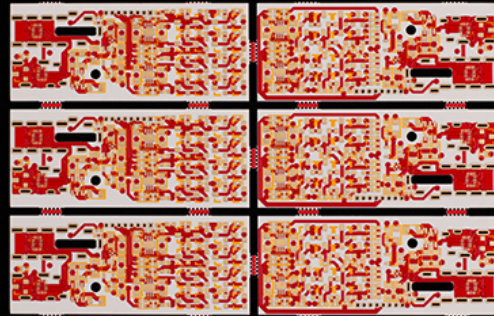


Figure 2: Visual representation of the  $\pm 5V$  boost converter for the headphone amp and the hybrid ceramic PCB for improved high frequencies.

## SETUP GUIDE

### 1. Connecting to a Smartphone/Tablet

1. Connect one end of the provided USB-C to USB-C cable to the Aune Yuki.
2. Connect the other end of the USB-C cable to your smartphone or tablet's USB-C port.
3. Plug your headphones or earphones into either the 3.5mm or 4.4mm output jack on the Yuki.
4. Ensure your music application is configured to use the external DAC. Some apps may require enabling a "USB exclusive mode" in their settings.

# Turn Your Smartphone/Pad Into a Hi-Res Player

Connect your smartphone/Pad to the Yuki via USB, and the sound quality will be massively improved. Having high-quality sound everywhere you go can be that easy.



Figure 3: Aune Yuki connected to a smartphone, transforming it into a high-resolution audio player.

## 2. Connecting to a PC/Laptop

1. Connect one end of the provided USB-C to USB-C cable to the Aune Yuki.
2. If your PC/laptop has a USB-A port, attach the USB-A to USB-C adapter to the USB-C cable, then connect to your computer. If your PC/laptop has a USB-C port, connect the cable directly.
3. Plug your headphones or earphones into either the 3.5mm or 4.4mm output jack on the Yuki.
4. Your computer should automatically recognize the Aune Yuki as an audio output device. Select it in your system's sound settings.



# Computer's Little HiFi Friend

## Up to 32bit/768k DSD256

Connect the Yuki to your computer/laptop via USB, plug in your headphones, and enjoy high resolution up to 32bit/768k DSD256.



Figure 4: Aune Yuki connected to a laptop, enabling high-resolution audio playback up to 32bit/768kHz DSD256.

## OPERATING INSTRUCTIONS

### Volume Control

The Aune Yuki features two buttons on its back for volume adjustment. The button with the dot is for Volume Up, and the other button is for Volume Down. These buttons control the device's internal volume.

### Changing Gain Level

To switch between high gain and low gain modes, press and hold both Volume Up and Volume Down buttons simultaneously for 2 seconds. You will notice a change in volume, indicating the gain level has been adjusted. High gain is suitable for harder-to-drive headphones, while low gain is ideal for sensitive IEMs.

### UAC1.0 Device Compatibility (e.g., Nintendo Switch)

For devices that support UAC1.0 (such as the Nintendo Switch), please hold down the Volume Up button on the Yuki and do not release it until the two devices are connected by cable and the Yuki is powered on. This ensures proper recognition and functionality.

Your browser does not support the video tag.

Video 1: Demonstrates volume control and gain level adjustment on the Aune Yuki, along with UAC1.0 device connection instructions. This video is provided by Wuhan Aune Acoustics Co.,Ltd.

## MAINTENANCE

---

- Keep the device clean by wiping it with a soft, dry cloth. Avoid using harsh chemicals or abrasive materials.
- Store the Aune Yuki in a cool, dry place away from direct sunlight and extreme temperatures.
- Avoid exposing the device to water or excessive moisture.
- Handle the USB-C cable and connectors with care to prevent damage.

## TROUBLESHOOTING

---

### No Sound Output

- **Check Connections:** Ensure all cables (USB-C and headphone) are securely connected to both the Aune Yuki and your source device.
- **Verify Source Device Output:** On your smartphone or PC, confirm that the Aune Yuki is selected as the primary audio output device.
- **Adjust Volume:** Increase the volume on both the Aune Yuki and your source device.
- **Test with Different Device/Headphones:** Try connecting the Yuki to a different source device or using different headphones to isolate the issue.
- **USB Exclusive Mode:** If using a music app, check if it requires "USB exclusive mode" and enable it if necessary.

### Perceived Electrical Noise During Playback

- **Enable USB Exclusive Mode:** In your music app, enable USB exclusive mode.
- **Test with Different Device:** Try connecting the Yuki to a different smartphone or PC to check if the noise persists.
- **Turn off Dolby Sound Enhancement:** Disable any Dolby sound enhancement modes in your phone settings.
- **Add Impedance Adapter:** Consider adding an impedance adapter between the headphone jack and the device's headphone output port.

## SPECIFICATIONS

---

<b>USB Input Max Bit Depth:</b>	32bit
<b>Max Sampling Rate:</b>	768kHz
<b>Max DSD Rate (Native):</b>	DSD512
<b>Single-Ended 3.5mm Output:</b>	
Output Level:	2.0Vrms
Noise Floor:	2.6µV
THD+N:	0.00036% @1kHz
Output Power:	90mW@30Ω
<b>Balanced 4.4mm Output:</b>	
Output Level:	4.0Vrms
Noise Floor:	2.9µV
THD+N:	0.00033% @1kHz
Output Power:	160mW@30Ω
<b>Dimensions:</b>	53.5*24*13 (mm)
<b>Product Dimensions:</b>	4.02 x 3.98 x 0.1 inches; 4.16 ounces
<b>Interface Type:</b>	USB
<b>Maximum Supply Voltage:</b>	5 Volts



# Yuki Specifications

## USB Input

Max bit depth: 32bit

Max sampling rate: 768k

Max DSD rate (native): DSD512

## Single-Ended 3.5mm Output:

Output level: 2.0Vrms

Noise floor: 2.6 $\mu$ V

THD+N: 0.00036%

Output power: 90mW@30 $\Omega$

## Balanced 4.4mm Output

Output level: 4.0Vrms

Noise floor: 2.9 $\mu$ V

THD+N: 0.00033%

Output power: 160mW@30 $\Omega$

Dimensions: 53.5\*24\*13(mm)

Accessories: USB-C to USB-C cable,  
USB-A to USB-C adapter

Figure 5: Detailed specifications and port layout of the Aune Yuki.

## WHAT'S IN THE BOX

---

- Aune Yuki Portable DAC with Headphone Amp
- USB-C to USB-C Cable
- USB-A to USB-C Adapter

## WARRANTY AND SUPPORT

---

For warranty information and technical support, please refer to the official Aune website or contact their customer

service directly. Keep your purchase receipt for warranty claims.