

## OKAI EA10C

# OKAI Ceetle Electric Scooter User Manual

Brand: OKAI | Model: EA10C Pro Black

### 1. INTRODUCTION

This manual provides essential information for the safe and efficient operation, maintenance, and troubleshooting of your OKAI Ceetle Electric Scooter. The OKAI Ceetle Electric Scooter with Seat (Model EA10C Pro Black) offers a comfortable and stylish riding experience, featuring a 350-watt motor, 10-inch vacuum tires, and UL 2272 certification for safety.



Figure 1: OKAI Ceetle Electric Scooter (Black) with seat.

## 2. SAFETY GUIDELINES

---

Always prioritize safety when operating your electric scooter. Adhere to all local traffic laws and regulations. It is highly recommended to wear a helmet and appropriate safety gear during every ride.

- Ensure the scooter is fully charged before use.
- Check tire pressure and brake functionality before each ride.
- Do not exceed the maximum weight limit of 220 pounds.
- Avoid riding in adverse weather conditions or on slippery surfaces.
- The product is UL 2272 certified, indicating compliance with electrical system safety standards.

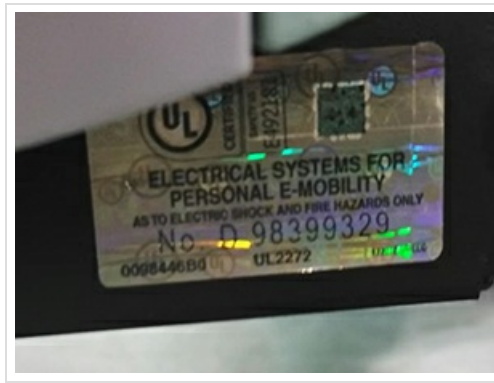


Figure 2: UL 2272 Certification ensures electrical system safety.

### 3. SETUP AND ASSEMBLY

---

Your OKAI Ceetle Electric Scooter comes mostly pre-assembled. Follow these steps to complete the setup:

1. Carefully remove the scooter from its packaging.
2. Unfold the handlebar stem and secure it in place according to the quick start guide.
3. Attach any accessories, such as the optional basket, if purchased separately.
4. Ensure all screws and fasteners are tightened securely, especially those holding the handlebar.
5. Fully charge the battery before the first use.



Figure 3: Front view of the scooter, showing handlebar and front wheel assembly.

## 4. OPERATING INSTRUCTIONS

The OKAI Ceetle Electric Scooter is designed for ease of use and comfort. Familiarize yourself with its features for an optimal riding experience.

### 4.1 Power and Performance

- Equipped with a 350-watt motor, providing up to 28N.m of torque.
- Achieves speeds of up to 25km/h (16mph).
- Capable of climbing hills with up to a 20% grade.
- Features 3 drive modes: High, Low, and Efficient, allowing you to adjust performance based on your needs.



Figure 4: Detail of the 350W power motor.

## 4.2 Locking and Unlocking

The scooter offers multiple ways to lock and unlock for enhanced security:

- **Phone App:** Use the dedicated mobile application to lock and unlock your scooter remotely.
- **NFC Key Card:** Tap the included NFC key card to quickly secure or release the scooter.
- **Screen Controls:** Utilize the integrated screen controls for direct locking and unlocking.

## 4.3 Riding Comfort

- **10-inch Vacuum Tires:** Provide a smooth and comfortable ride by absorbing road imperfections.
- **Body-Comfort Seat:** Designed with built-in shock absorbers for maximum comfort during rides.
- **Wide Platform:** The 10.6-inch wide deck offers ample space for comfortable foot placement.



Figure 5: The seat features built-in shock absorbers for enhanced comfort.



Figure 6: The wide footrest platform provides ample space for rider comfort.

## 4.4 Braking System

- Features a front-mechanical drum brake and a rear-mechanical drum brake.
- Includes an electronic brake for additional stopping power and safety.



Figure 7: Illustration of the dual braking system.

## 4.5 Lighting

- Bright LED headlights for improved visibility during night rides.
- Brake lights to alert others when you are slowing down or stopping.

## 4.6 Battery and Charging

- Offers up to 35 miles of range on a full charge.
- Charging time is approximately 6 hours.
- The battery is replaceable, and additional batteries are sold separately for extended range.



Figure 8: Illustration highlighting longer battery life.



Figure 9: The battery is detachable for convenient charging or swapping.

#### 4.7 Folding Mechanism

The scooter features a folding mechanism for easier storage and transport. The seat can be folded down to reduce the scooter's overall height.

#### 4.8 Instructional Video

Watch the official product video for a visual guide on operating your OKAI Ceetle Electric Scooter, including locking, unlocking, charging, and riding features.



Video 1: OKAI EA10 Series Electric Scooter Overview. This video demonstrates key features such as locking mechanisms, riding modes, battery charging, and overall user experience.

## 5. MAINTENANCE

Regular maintenance ensures the longevity and safe operation of your scooter.

- **Cleaning:** Wipe down the scooter with a damp cloth. Avoid using high-pressure water or harsh chemicals.
- **Tires:** Periodically check tire pressure and inspect for wear or damage. Maintain proper inflation for optimal performance and safety.
- **Brakes:** Regularly inspect brake levers and cables for proper tension and function. Ensure brake pads are not excessively

worn.

- **Battery Care:** Store the scooter and battery in a cool, dry place. Avoid extreme temperatures. If storing for extended periods, charge the battery to about 50-70% and recharge every 1-2 months.
- **Fasteners:** Periodically check and tighten all screws and bolts, especially on the handlebars and seat post, to ensure stability.

## 6. TROUBLESHOOTING

If you encounter issues with your OKAI Ceetle Electric Scooter, refer to the following common troubleshooting tips:

Problem	Possible Cause	Solution
Scooter does not power on.	Low battery, loose battery connection, power button issue.	Charge the battery fully. Ensure the battery is properly seated. Press and hold the power button firmly.
Reduced range or speed.	Low tire pressure, heavy load, riding uphill frequently, cold weather, battery degradation.	Check and inflate tires to recommended pressure. Reduce load. Avoid continuous uphill riding. Ensure battery is fully charged. Consider battery replacement if significant degradation occurs over time.
Brakes feel loose or ineffective.	Brake cable tension, worn brake pads.	Adjust brake cable tension. Inspect and replace worn brake pads. Consult a professional if unsure.
Unusual noises during operation.	Loose components, debris in wheels, motor issue.	Inspect for loose parts and tighten. Check wheels for obstructions. If noise persists, contact customer support.

For issues not listed here or if solutions do not resolve the problem, please contact OKAI customer support.

## 7. SPECIFICATIONS

Feature	Detail
Brand	OKAI
Model Name	EA10C
Color	Black
Motor Power	350-watt
Max Speed	15.5 MPH (25 km/h)
Max Distance Range	Up to 35 Miles
Charging Time	6 Hours
Weight Limit	220 Pounds
Product Dimensions (LxWxH)	45"L x 21"W x 41"H
Item Weight	64 Pounds



Feature	Detail
Wheel Size	10 Inches
Wheel Type	Tubeless
Brake Style	Mechanical drum brake + electronic brake
Frame Material	Aluminum
Special Features	Cruise Control, Lockable, Replaceable Battery, Seat, Wide Platform
UL Certification	UL 2272 Certified

## 8. WARRANTY AND SUPPORT

Your OKAI Ceetle Electric Scooter comes with a Limited Warranty. For detailed information regarding warranty coverage, claims, or technical support, please refer to the official user guide or contact OKAI customer service.

- **Official User Guide (PDF):** [Download User Guide](#)
- **Customer Support:** Refer to your purchase documentation or the OKAI official website for contact information.

