

GOODTEL G9

GOODTEL G9 11-Inch Android 13 Tablet User Manual

Model: G9 | Brand: GOODTEL

INTRODUCTION

This manual provides essential information for setting up, operating, maintaining, and troubleshooting your GOODTEL G9 11-inch Android 13 Tablet. Please read it thoroughly to ensure optimal performance and longevity of your device.

11.0-inch in-cell Large Display

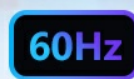
Explore Adventure and Joy in the Immersive Vision



11.0-inch HD
Screen



2000*1200
Resolution



60Hz
Refresh Rate



Eye Protection
Antiblu light

Image: Overview of the GOODTEL 11-inch tablet highlighting its features.

WHAT'S IN THE BOX

Your GOODTEL G9 tablet package includes the following items:

- GOODTEL G9 11-inch Android 13 Tablet

- Protective Case
- Wireless Keyboard with Stand
- Wireless Mouse
- Stylus Pen
- USB-C Charging Cable
- Power Adapter
- User Manual & Warranty Card

High Performance Processors

MT8183 CPU, octa-core processor

Powerful data processing capability ensures faster download of required applications and ultra-smooth video playback speeds and gaming experience

16GB

RAM

MT8183

Processor

8-core

Processor Groups

2.0GHZ

Running Frequency



Image: The GOODTEL G9 tablet displayed with its accompanying accessories, including the keyboard, mouse, stylus, charger, and protective case.

SETUP

1. Initial Power On

1. Press and hold the Power button (located on the side) until the GOODTEL logo appears.
2. Follow the on-screen prompts to select your language, region, and agree to the terms and conditions.

2. Connecting to Wi-Fi

1. During initial setup, select your Wi-Fi network from the list.

2. Enter the Wi-Fi password and tap **Connect**. The tablet supports 5G+2.4G dual-band Wi-Fi.
3. If setting up later, go to **Settings > Network & internet > Wi-Fi**.

3. Connecting Accessories (Keyboard & Mouse)

The included keyboard and mouse connect via Bluetooth.

1. Ensure the keyboard and mouse are powered on.
2. On your tablet, go to **Settings > Connected devices > Bluetooth**.
3. Toggle Bluetooth **On**.
4. Select the keyboard and mouse from the list of available devices to pair.

Smooth Stable High quality

The 16GB RAM high-performance processor allows the game to run more efficiently and stably, and the low-power performance improvement optimises the gaming experience so that you can experience victory and joy.

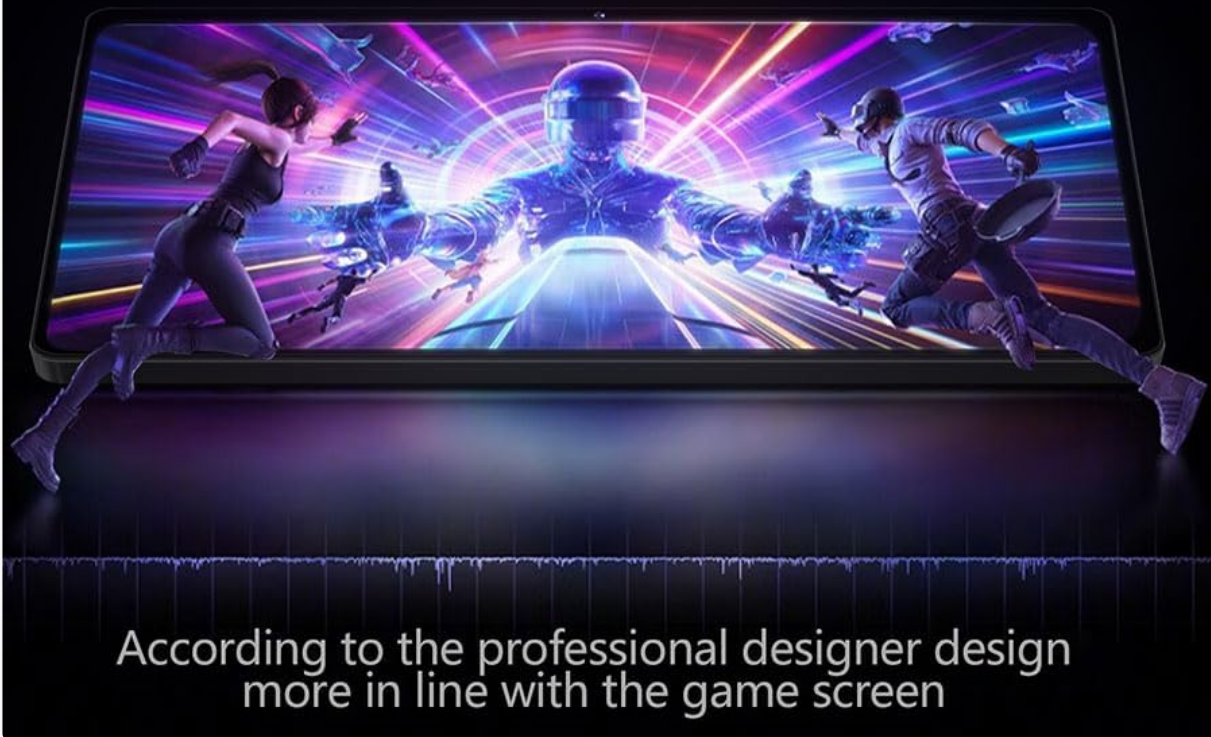


Image: The GOODTEL G9 tablet set up with its wireless keyboard and mouse, demonstrating a desktop-like configuration.

4. Charging the Tablet

Use the provided USB-C charging cable and power adapter to charge your tablet. Connect the USB-C end to the tablet's charging port and the adapter to a power outlet. A full charge ensures extended usage with the 8600mAh battery.

OPERATING

1. Basic Navigation

- **Touch Gestures:** Tap to select, swipe to scroll, pinch to zoom.

- **Home Screen:** Access your apps, widgets, and search bar. Swipe left/right to navigate between home screens.
- **Notification Panel:** Swipe down from the top of the screen to access notifications and quick settings.

2. App Management

The tablet runs on Android 13, offering enhanced privacy and personalized settings.

- **Installing Apps:** Open the **Play Store** app, search for your desired application, and tap **Install**.
- **Split Screen:** Android 13 supports split-screen functionality for multitasking. Open a recent apps view, long-press an app icon, and select the split-screen option.

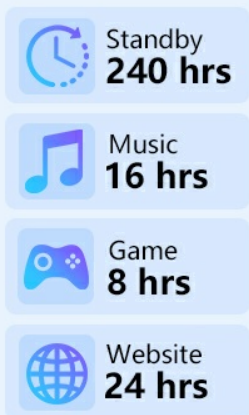
3. Camera Usage

The G9 tablet features a 5MP front camera and a 13MP rear camera with 2MP auxiliary anti-shake cameras.

1. Open the **Camera** app.
2. Tap the shutter button to take photos or switch to video mode.
3. Use the front camera for video calls and selfies, and the rear camera for high-quality photos.

It's Always There, Full of Vitality

One Single Charge, Up to 18 Hrs of Daily Use.



8600mAh Mega Battery

Power You Day In and Day Out



Image: Illustration of the GOODTEL G9 tablet's camera capabilities, including its 13MP rear and 5MP front cameras.

4. Media Consumption

Enjoy a rich multimedia experience on the 11-inch 2K display with 4 stereo speakers.

- **Video Playback:** Use pre-installed apps or download your preferred streaming services from the Play Store. The 2000*1200 resolution provides clear visuals.
- **Audio:** The 4 stereo speakers enhance the sound experience for music and videos.

CAMERA MODE



5MP

13MP

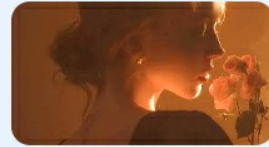


Image: The GOODTEL G9 tablet showcasing its 11-inch 2K Ultra High Definition Fullview Display.

MAINTENANCE

1. Cleaning the Device

- Use a soft, lint-free cloth to clean the screen and body.
- Avoid using harsh chemicals or abrasive materials.

2. Software Updates

Regularly check for and install software updates to ensure optimal performance, security, and access to new features.

1. Go to **Settings > System > System update**.
2. Follow the on-screen instructions to download and install any available updates.

3. Storage Management

The tablet comes with 256GB of internal storage and supports MicroSD/TF cards up to 1TB for expansion.

- To insert a MicroSD card, locate the card slot on the side of the tablet and gently push the card in until it clicks.
- Regularly clear unnecessary files and apps to free up storage space and maintain performance.

TROUBLESHOOTING

Common Issues and Solutions:

- **Device not powering on:** Ensure the tablet is sufficiently charged. Connect it to the charger for at least 30 minutes before attempting to power it on.
- **Wi-Fi connectivity issues:** Check if Wi-Fi is enabled in settings. Restart your router and the tablet. Ensure you are within range of the Wi-Fi signal.
- **Apps crashing or freezing:** Close and reopen the app. Clear the app's cache (Settings > Apps > [App Name] > Storage & cache > Clear cache). If the issue persists, uninstall and reinstall the app.

- **Slow performance:** Close unused apps, clear cache, and ensure sufficient storage space. Restarting the tablet can also help.

Factory Reset

If you encounter persistent software issues, a factory reset may be necessary. **Warning: This will erase all data on your tablet. Back up important data before proceeding.**

1. Go to **Settings > System > Reset options**.
2. Select **Erase all data (factory reset)** and follow the on-screen instructions.

SPECIFICATIONS

| Feature | Specification |
|--------------------|---|
| Model Name | G9 |
| Operating System | Android 13 |
| Screen Size | 11 Inches |
| Display Resolution | 2000*1200 MP (2K) |
| Processor | 2.0GHz Octa-Core MT8183 |
| RAM | 16GB (8GB RAM + 8GB extended RAM) |
| ROM (Flash Memory) | 256GB UFS |
| Expandable Storage | Up to 1TB MicroSD/TF card |
| Rear Camera | 13MP + 2MP auxiliary anti-shake cameras |
| Front Camera | 5MP |
| Battery Capacity | 8600mAh Lithium Polymer |
| Wireless Standard | WiFi 5G (802.11ac, 802.11n) |
| Bluetooth | Bluetooth 5.0 |
| Speakers | 4 Stereo Speakers |
| Dimensions | 0.79 x 16 x 26.01 cm |
| Weight | 520 g |



Image: Details of the GOODTEL G9's high-performance MT8183 octa-core processor.

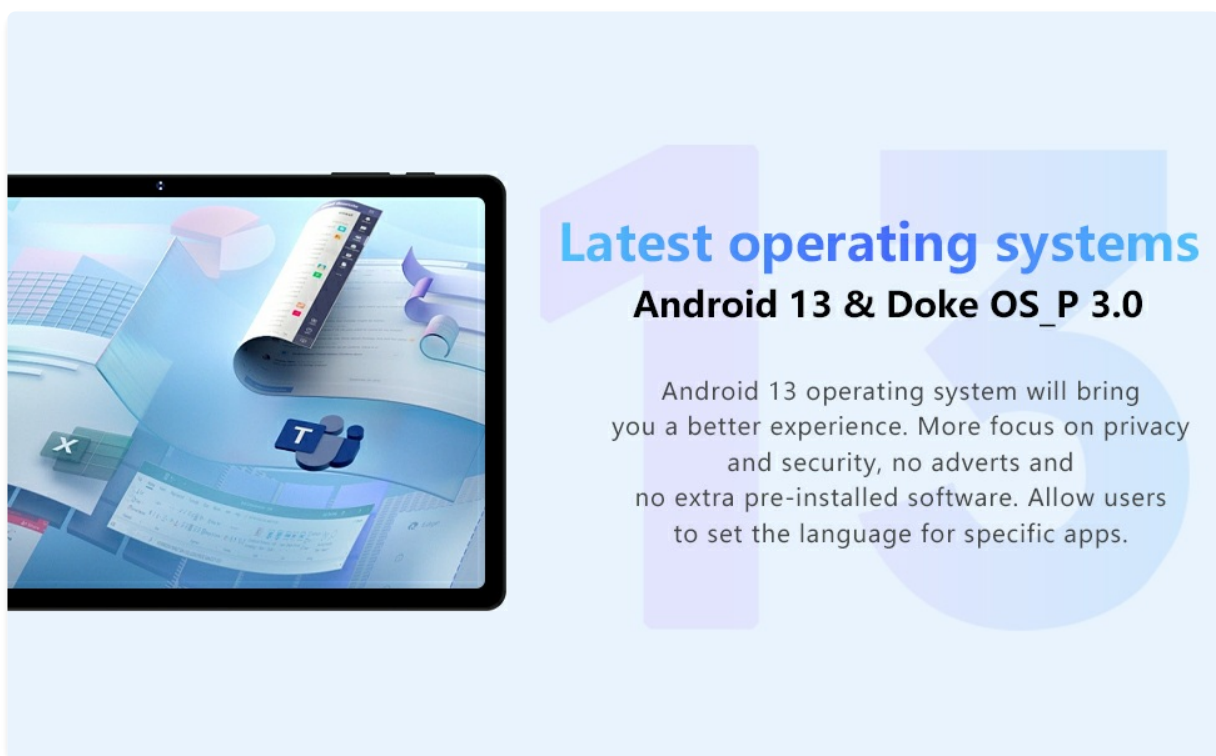


Image: Visual representation of the GOODTEL G9's 8600mAh extra-large battery capacity.

WARRANTY AND SUPPORT

GOODTEL offers a two-year warranty and long-term technical support for your tablet. If you require any assistance or have questions, please refer to the contact information provided on your Warranty Card included in the package.

