

## Teday AX5400 (B0CJFP8P3X)

# Teday AX5400 WiFi 6E Tri-Bands USB 3.0 Adapter User Manual

Model: AX5400 (B0CJFP8P3X)

Brand: Teday

## 1. IMPORTANT SAFETY INFORMATION

Please read and follow these instructions carefully before using the product to ensure safe and proper operation.

1. Before using this product, please read the instructions carefully and follow them.
2. During the use of this product, ensure that the site is dry and avoid using it in water or a humid environment.
3. Do not expose the product near a source of ignition.
4. When using this product, maintain an appropriate position and follow proper usage procedures.
5. If the product shows abnormalities, such as noise, smoke, etc., please stop using it immediately and contact after-sales service.



Figure 1.1: Product packaging displaying safety information.

## 2. PRODUCT OVERVIEW

The Teday AX5400 WiFi 6E Tri-Bands USB 3.0 Adapter is designed to provide high-speed, stable wireless connectivity for your desktop or laptop. It supports the latest WiFi 6E standard, offering enhanced performance across 2.4GHz, 5GHz, and 6GHz frequency bands.



Figure 2.1: The Teday AX5400 WiFi 6E Tri-Bands USB 3.0 Adapter.

### Key Features:

- **Stronger Signal:** Dual 5dBi antennas provide robust signal enhancement, extending range and stability for seamless connectivity.
- **Tri-Band Support:** Connect to 6GHz (up to 2400Mbps), 5GHz (up to 2400Mbps), and 2.4GHz (up to 600Mbps) frequency bands for optimal performance and reduced interference.
- **USB 3.0 Hi-Speed Connector:** Offers up to 10 times faster transfer speeds compared to USB 2.0, ensuring an enhanced online experience with minimal lag.
- **Driver-Free Installation:** Plug-and-play functionality for quick setup on compatible Windows systems.
- **Enhanced Heat Dissipation:** Designed to maintain low temperatures for long-term, stable use.
- **Strong Antenna Design:** Clever folding design with flip covers enhances sensitivity for stable signal transmission and reception.

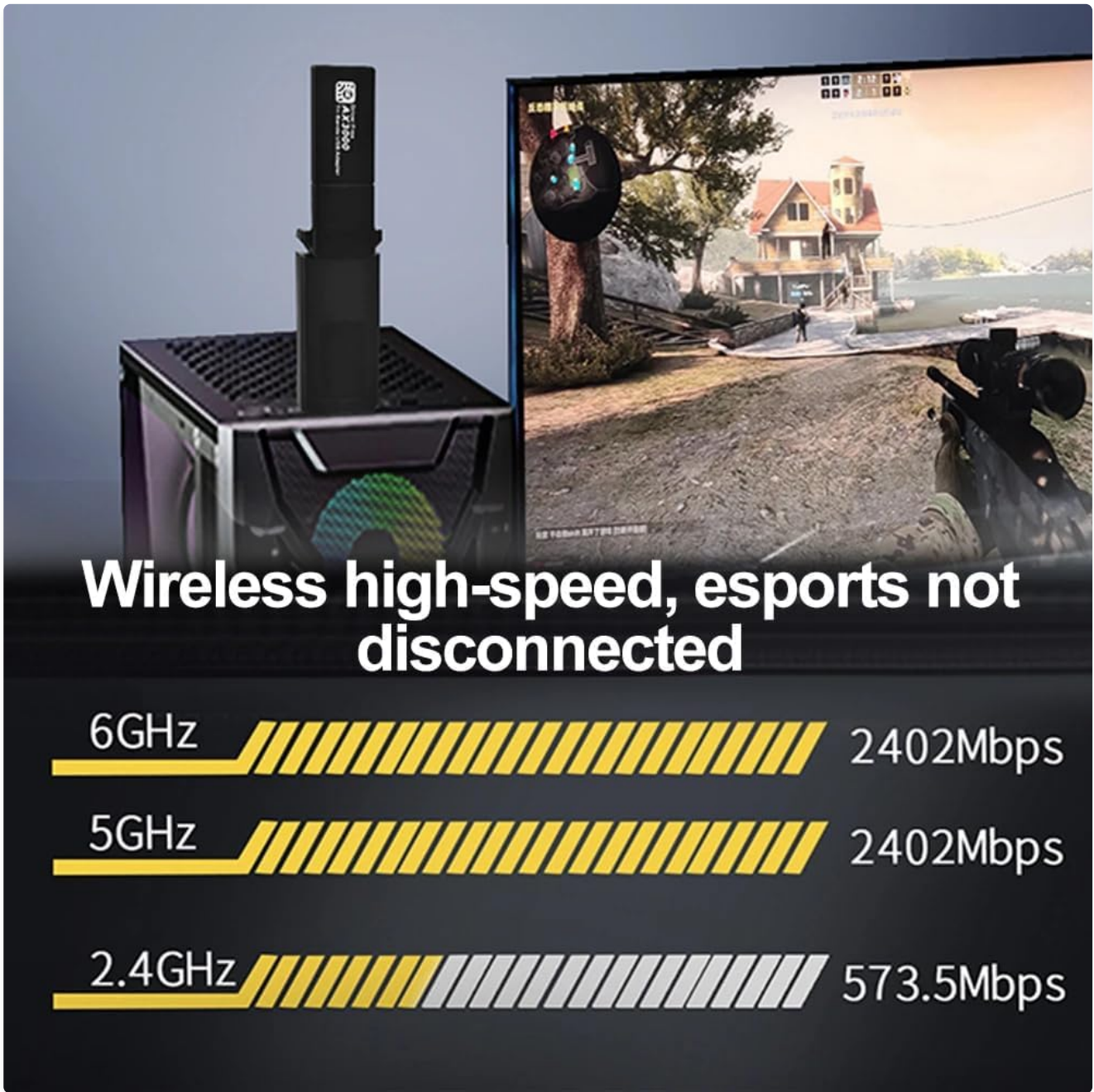


Figure 2.2: Tri-band speed capabilities of the adapter.

# USB3.0 Stable Transmission

USB3.0 has a transmission rate almost 10 times faster than USB2.0, resulting in faster transmission and better network connectivity



Faster transmission



Low power consumption



Backward compatible

Figure 2.3: Benefits of USB 3.0 stable transmission.

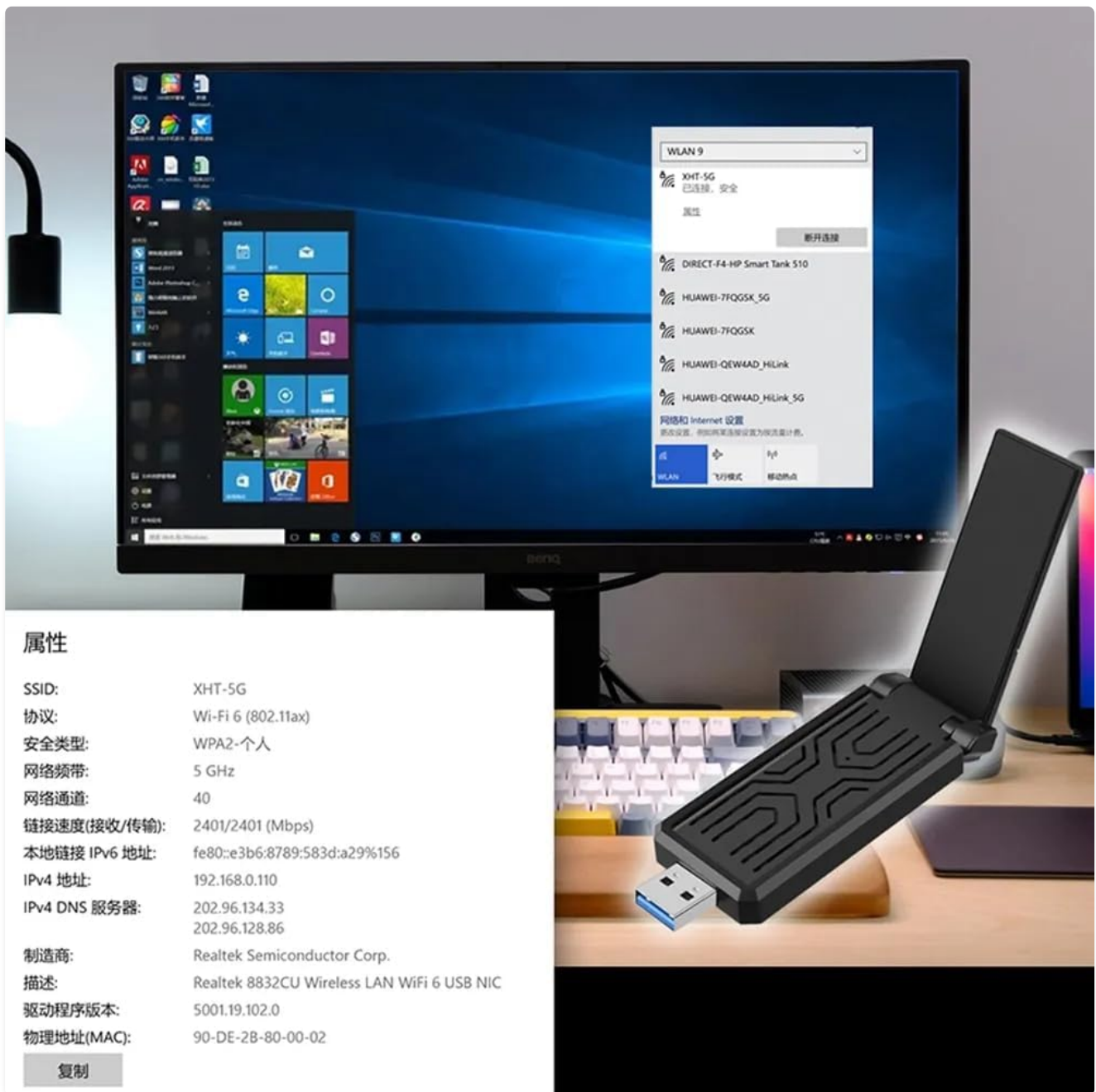


Figure 2.4: The strong antenna design for enhanced signal.

### 3. PACKAGE CONTENTS

Verify that all items are present in your package:

- 1 x AX5400Mbps USB WiFi Adapter

### 4. SETUP GUIDE

The Teday AX5400 WiFi 6E Adapter is designed for driver-free installation on compatible Windows operating

systems.

## **System Requirements:**

- Desktop PC or Laptop with an available USB 3.0 port (backward compatible with USB 2.0, but performance may be reduced).
- Operating System: Windows 11/10 (32/64-bit).
- **Note on Band Support:**
  - On Windows 10, this WiFi device supports 5GHz and 2.4GHz bands only.
  - On Windows 11, it supports 6GHz, 5GHz, and 2.4GHz bands, provided your router also supports 6GHz.

## **Installation Steps:**

1. Locate an available USB 3.0 port on your desktop or laptop. USB 3.0 ports are typically blue internally.
2. Carefully insert the Teday AX5400 USB WiFi Adapter into the USB port. Ensure it is fully seated.
3. The operating system (Windows 10 or 11) should automatically detect and install the necessary drivers. This process may take a few moments.
4. Once the installation is complete, a notification may appear, or the network icon in your system tray will indicate that wireless networks are available.

# Enhanced heat dissipation to lock in low temperatures

Instantly remove core heat for long-term use

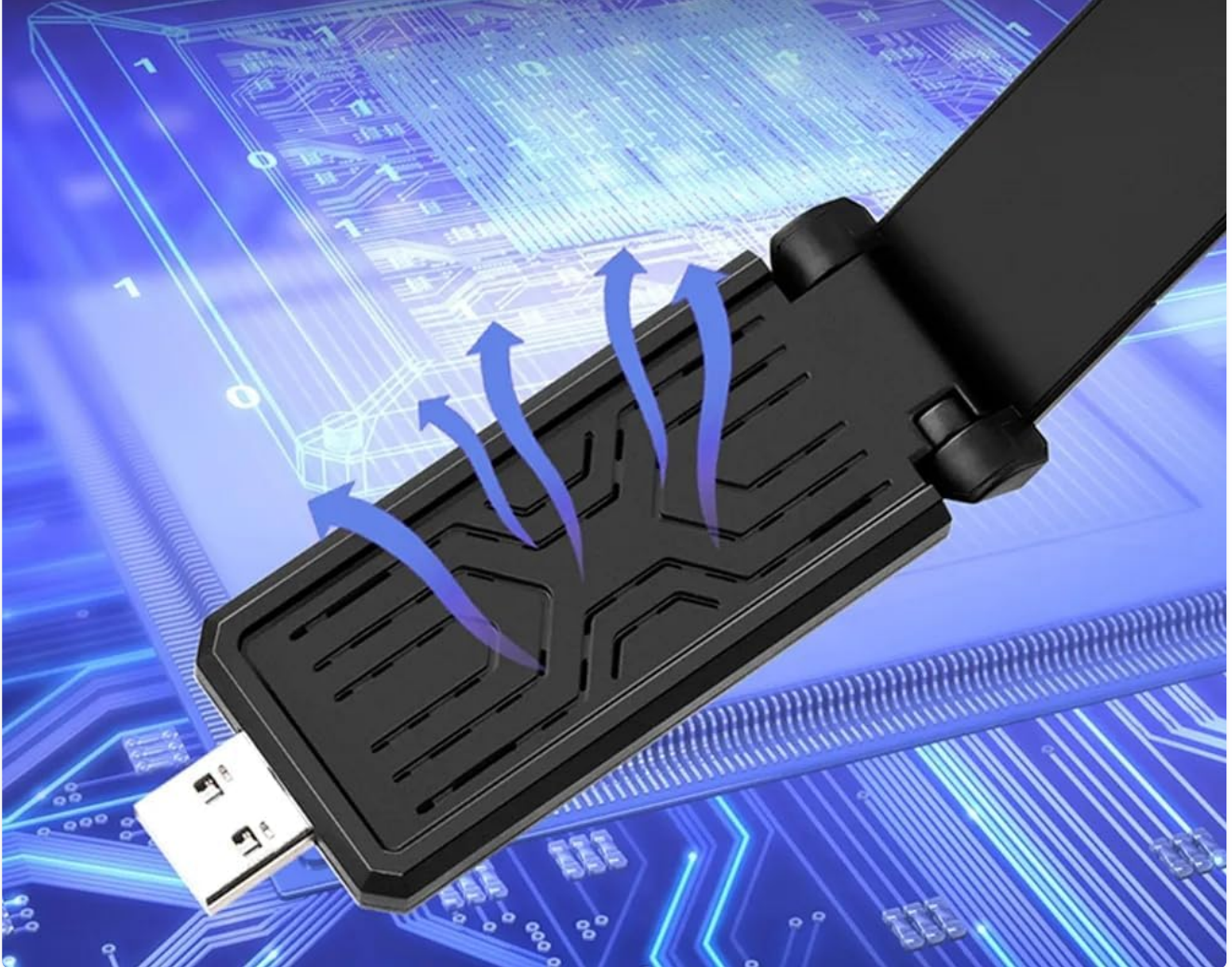


Figure 4.1: Connecting the adapter and accessing WiFi settings.

## 5. OPERATING INSTRUCTIONS

After successful installation, you can connect to a wireless network.

### Connecting to a WiFi Network:

1. Click on the network icon (usually a WiFi symbol) in the system tray on your Windows taskbar.
2. A list of available wireless networks will appear.
3. Select your desired WiFi network from the list.
4. Click 'Connect'. If prompted, enter the network security key (password).
5. Once connected, the network icon will change to indicate a successful connection.

## Understanding Tri-Band Connectivity:

Your adapter supports 2.4GHz, 5GHz, and 6GHz bands. Each band offers different characteristics:

- **2.4GHz:** Offers wider coverage and better penetration through walls, but with lower speeds and more interference from other devices. Ideal for general browsing and devices further from the router.
- **5GHz:** Provides faster speeds and less interference, but with a shorter range and poorer wall penetration. Ideal for streaming, gaming, and devices closer to the router.
- **6GHz (WiFi 6E):** The newest band, offering the fastest speeds and lowest latency with minimal interference. Requires a WiFi 6E compatible router and Windows 11. Best for high-bandwidth applications like VR, 8K streaming, and competitive gaming.

Your system will typically choose the best available band automatically. For optimal performance, ensure your router is configured to broadcast on the desired bands.

## 6. MAINTENANCE

To ensure the longevity and optimal performance of your Teday AX5400 WiFi Adapter, follow these simple maintenance guidelines:

- **Keep Clean:** Gently wipe the adapter with a soft, dry cloth to remove dust. Avoid using liquid cleaners or solvents.
- **Proper Storage:** When not in use, store the adapter in a cool, dry place away from direct sunlight and extreme temperatures.
- **Avoid Physical Damage:** Do not drop, bend, or apply excessive force to the adapter. Ensure it is not obstructed when plugged into a USB port.
- **Heat Dissipation:** The adapter is designed with enhanced heat dissipation. Ensure adequate airflow around the device when in use to prevent overheating.

# A strong antenna results in a strong signal

Clever folding design with flip covers enhances the sensitivity of signal transmission and reception, making iFi reception/transmission more stable

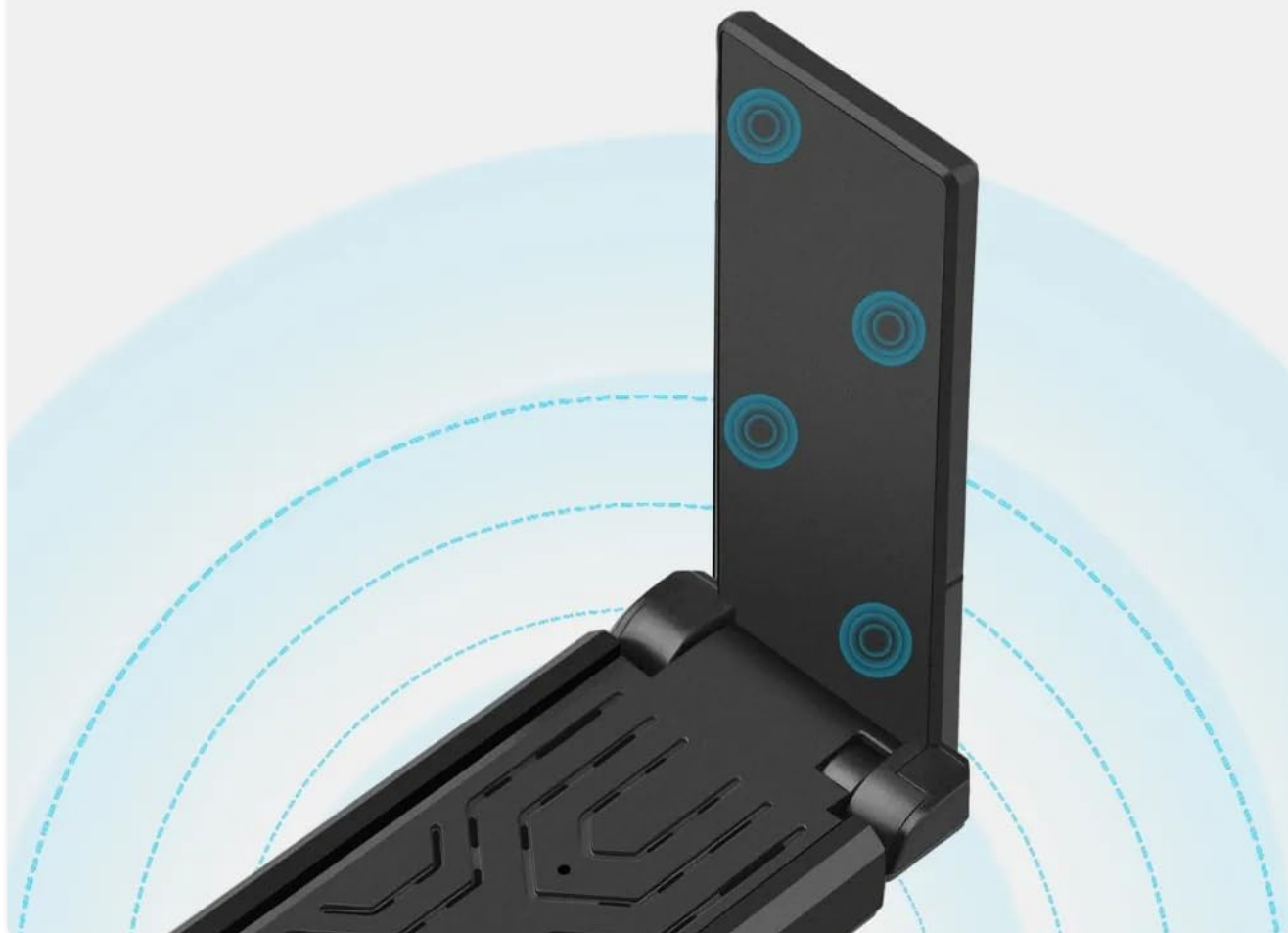


Figure 6.1: Enhanced heat dissipation design.

## 7. TROUBLESHOOTING

If you encounter issues with your Teday AX5400 WiFi Adapter, refer to the following common problems and solutions:

### Common Issues and Solutions:

- **Adapter Not Recognized / Frequent Disconnections:**

- **Solution:** Try unplugging the adapter from the USB port and plugging it back in. Test different USB ports on your computer. Sometimes, a full computer restart can resolve recognition issues. Ensure your computer's USB drivers are up to date.

- **Cannot Connect to WiFi Network:**

- **Solution:** Double-check the WiFi password. Ensure your router is powered on and broadcasting a signal. Try restarting your router. Verify that your operating system (Windows 10/11) is up to date.

- **Slow Speeds / Poor Signal:**

- **Solution:** Ensure the adapter is plugged into a USB 3.0 port for optimal speed. Move closer to your wireless router. Minimize physical obstructions (walls, large furniture) between the adapter and the router. If possible, switch to the 5GHz or 6GHz band for faster speeds and less interference.

- **6GHz Band Not Available (on Windows 11):**

- **Solution:** Confirm that your wireless router supports WiFi 6E and is broadcasting a 6GHz signal. Ensure your Windows 11 installation is fully updated.

If the problem persists after trying these steps, please refer to the Warranty and Support section for further assistance.

## 8. SPECIFICATIONS

Feature	Specification
Model	AX5400
Hardware Interface	USB 3.0
Data Link Protocol	IEEE 802.11ax/ac/a/b/g/n
Data Transfer Rate	Up to 5400 Megabits Per Second (2400Mbps on 6GHz, 2400Mbps on 5GHz, 600Mbps on 2.4GHz)
Frequency Bands	2.4GHz, 5GHz, 6GHz (Tri-Band)
Compatible Devices	Laptop, Desktop
Compatible Operating System Family	Windows (Windows 10/11 32/64-bit)
Manufacturer	Today
UPC	793481667175

## 9. WARRANTY AND SUPPORT

Today products are manufactured to high-quality standards. For information regarding warranty coverage and terms, please refer to the documentation included with your purchase or contact the seller directly.

### Customer Support:

If you require technical assistance, have questions about your product, or need to report an issue, please contact the seller or manufacturer through the platform where you purchased the product. Provide your product model (AX5400) and ASIN (B0CJFP8P3X) for faster service.