

sharge SD 001

# SHARGE Disk M.2 NVMe SSD Enclosure Instruction Manual

Model: SD 001

## PRODUCT OVERVIEW

The SHARGE Disk M.2 NVMe SSD Enclosure is a compact and robust external storage solution designed for high-speed data transfer and active cooling. It supports M.2 NVMe SSDs (M-Key, 2230 size) up to 2TB, offering 10Gbps USB 3.2 Gen2 connectivity. Its durable design includes IP54 water and dust resistance, 6.6ft drop protection, and a built-in high-speed fan to maintain optimal performance.



Image: The SHARGE Disk M.2 NVMe SSD Enclosure, demonstrating its small and portable design when held in a hand.

### Key Features:

- **Active Cooling System:** Features a built-in high-speed fan (11,000 rpm) for efficient heat dissipation, ensuring stable SSD performance during intensive use.
- **High-Speed Data Transfer:** Achieves 10Gbps transmission speeds via USB-C 3.2 Gen2, allowing rapid transfer of large files.
- **Compact and Portable:** Weighs only 24g (0.84 ounces) and is approximately half the size of a credit card, making it

ideal for on-the-go use.

- **Write Protection:** Includes a physical write protection switch to safeguard data from accidental deletion, unauthorized tampering, or viruses.
- **Durable Design:** IP54-rated for water and dust resistance, with 6.6ft drop protection, providing secure data storage in various environments.
- **Wide Compatibility:** Equipped with a built-in USB-C male port for direct connection to smartphones, PS5, Steam Deck, laptops, and more. Compatible with Windows, MacOS, iPad OS, Linux, Android, ChromeOS, and Harmony systems.

## WHAT'S IN THE BOX



Image: All items included in the SHARGE Disk package: the enclosure, a data cable, and thermal pads.

- SHARGE Disk M.2 NVMe SSD Enclosure × 1
- USB-C Data Cable × 1
- Thermal Pads × 1 set

## SETUP GUIDE

---

Follow these steps to install your M.2 NVMe SSD into the SHARGE Disk Enclosure:

1. **Open the Transparent Cover:** Gently slide or lift the transparent protective cover of the enclosure.
2. **Remove the Inner Casing:** Carefully pull off the inner casing to expose the SSD slot.
3. **Apply Thermal Pad:** Paste the silicone thermal pad onto the M.2 NVMe SSD. Ensure it covers the main chip area for optimal heat dissipation.
4. **Insert SSD:** Align your M-Key M.2 NVMe SSD (2230 size only) with the slot inside the enclosure and gently push it in until it is fully seated.
5. **Secure with Rubber Clips:** Use the provided rubber clips to secure the SSD in place.
6. **Replace Inner Casing and Cover:** Slide the inner casing back into place, then close the transparent protective cover until it clicks securely.

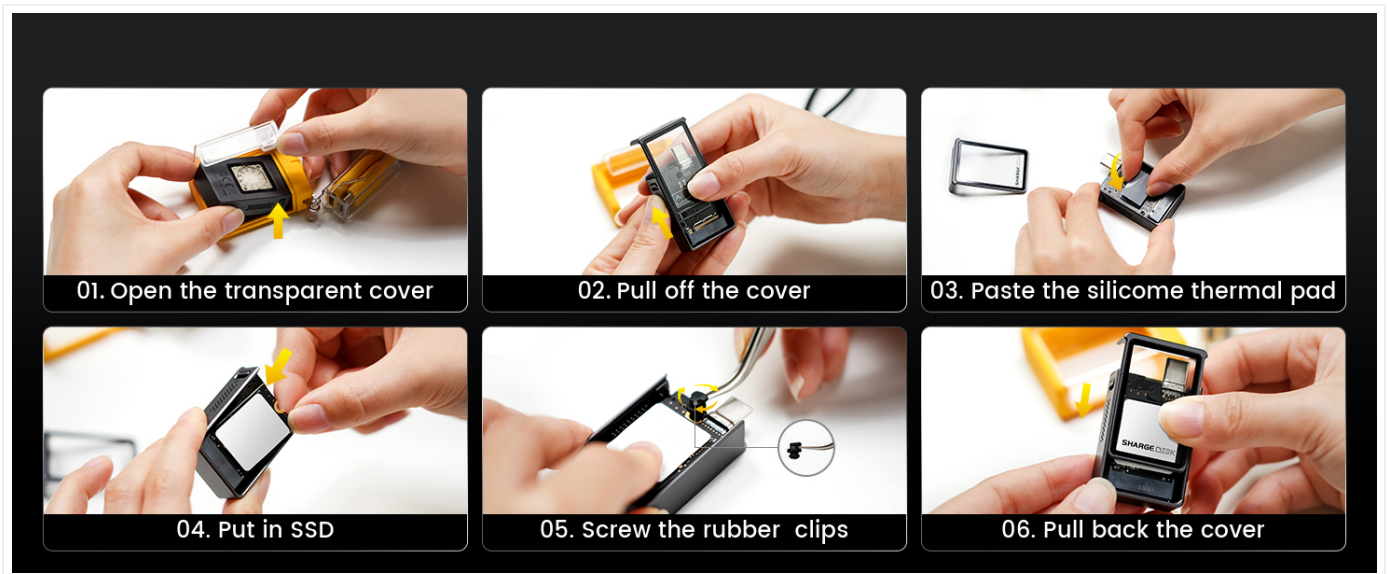


Image: A step-by-step visual guide demonstrating the installation process of an M.2 NVMe SSD into the enclosure.

Once the SSD is installed, connect the SHARGE Disk to your device using the integrated USB-C connector or the provided USB-C cable if using the silicone protective case.

## OPERATING INSTRUCTIONS

---

### Data Transfer:

The SHARGE Disk supports USB 3.2 Gen2, providing data transfer speeds up to 10Gbps. For optimal performance, ensure your host device and connection cables support USB 3.2 Gen2 and UASP mode is enabled. Performance may vary based on host configuration and SSD used.



**10Gbps**

**1 AAA Game**  
70GB--76s

**1 4K Movie**  
20GB--22s

**100s SLR Video**  
42GB--45s

**1000 JPG Photos**  
5GB--5.5s

\* Requires an SSD to support high-speed transfers.  
\* Performance may vary depending on host configuration. To reach maximum read/write speeds, respectively, the host device and connection cables must support USB 3.2 Gen 2 and the UASP mode must be enabled. Also compatible with lower transfer speed protocols.

Image: The enclosure connected to a laptop, highlighting its 10Gbps transfer capability for large files like games, movies, and photos.

### Active Cooling System:

The built-in fan operates at 11,000 RPM to actively dissipate heat generated by the SSD, maintaining stable performance even during prolonged high-speed operations. This helps prevent thermal throttling and ensures data integrity.

# High Power Cooling Fan

Cooling fan rotates at **11,000** rpm to dissipate heat and provide data security.

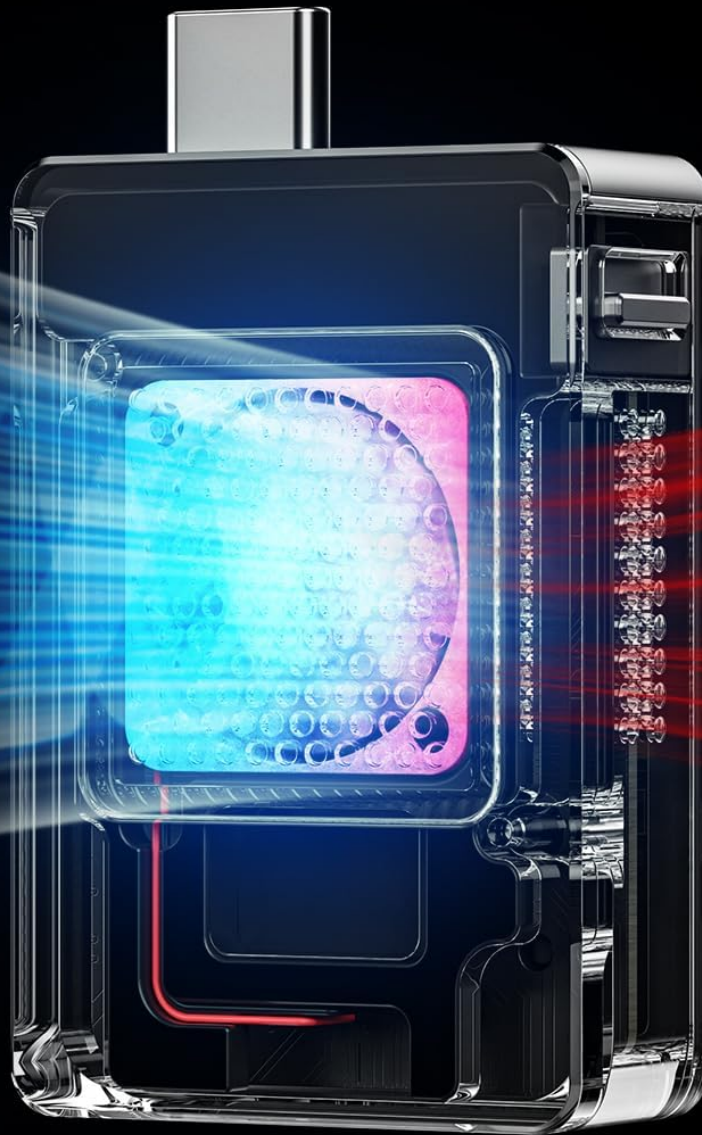


Image: An internal view of the SHARGE Disk, illustrating the high-power cooling fan and its airflow for heat dissipation.

## Write Protection:

Utilize the physical write protection switch on the enclosure to prevent accidental data deletion, unauthorized modifications, or virus infections, especially when connecting to public or unfamiliar computers.

# Write Protection

Keep Your Safe From  
computer viruses accidental  
deletion illegal tampering



Image: A close-up view of the write protection switch, indicating its function to secure data.

## Compatibility:

The SHARGE Disk is broadly compatible with various devices and operating systems:

- **Devices:** Laptops, PCs, Smartphones, iPad Pro, PS5, Steam Deck, SLR cameras (for external recording).
- **Operating Systems:** Windows 7/8.1/10/11, MacOS 10 or later, iPad OS 12.0.1 or later, Linux, Android, ChromeOS, Harmony.

*Note: B Key, B&M Key, SATA, and Nintendo Switch SSDs are not supported.*



# Extensive Application Scenarios

With only 0.84 OZ, the size of a half credit card



Image: The SHARGE Disk demonstrating its extensive application scenarios, connected to a laptop, a gaming handheld, a camera, and a smartphone.

## MAINTENANCE

To ensure the longevity and optimal performance of your SHARGE Disk M.2 NVMe SSD Enclosure, follow these maintenance guidelines:

- **Cleaning:** Use a soft, dry cloth to wipe the exterior of the enclosure. For dust accumulation in the fan area, use



compressed air. Do not use liquid cleaners or abrasive materials.

- **Storage:** Store the enclosure in a cool, dry place away from direct sunlight and extreme temperatures.
- **Handling:** While the enclosure is durable with 6.6ft drop protection and IP54 rating, avoid unnecessary drops or impacts. Ensure the transparent cover is securely closed to maintain dust and water resistance.
- **Firmware Updates:** Periodically check the official SHARGE website for any available firmware updates for your device to ensure continued compatibility and performance improvements.

## TROUBLESHOOTING

---

If you encounter issues with your SHARGE Disk, refer to the following common troubleshooting steps:

- **Device Not Recognized:**
  - Ensure the SSD is correctly installed and seated firmly within the enclosure.
  - Try connecting to a different USB-C port on your device.
  - Test with a different USB-C cable if you are using one.
  - Verify that the SSD itself is functional by testing it in another compatible enclosure or system if possible.
  - For new SSDs, ensure they are initialized and formatted in your operating system's Disk Management (Windows) or Disk Utility (macOS).
- **Slow Transfer Speeds:**
  - Confirm that your host device's USB-C port supports USB 3.2 Gen2 (10Gbps). Older USB versions will result in lower speeds.
  - Ensure the USB-C cable used is rated for 10Gbps data transfer.
  - Check if UASP (USB Attached SCSI Protocol) is enabled on your system, as it significantly improves performance.
  - Verify the SSD itself is capable of high speeds.
  - Close other applications that might be consuming system resources or disk I/O.
- **Fan Noise/Operation:**
  - The fan is designed to activate when the SSD generates heat to maintain optimal temperature. Some noise is normal during operation.
  - If the fan is excessively loud or not spinning, ensure there are no obstructions to the fan blades.
  - Ensure the thermal pad is correctly applied to the SSD to facilitate heat transfer to the cooling system.
- **Write Protection Issue:**
  - Ensure the write protection switch on the enclosure is in the unlocked position if you intend to write data to the SSD.

If these steps do not resolve your issue, please contact SHARGE customer support for further assistance.

## SPECIFICATIONS

---

| Feature      | Detail        |
|--------------|---------------|
| Model Number | SD 001        |
| Material     | Gray-Silicone |

| Feature                       | Detail  |
|-------------------------------|---|
| Item Weight                   | 24 Grams (0.847 ounces)   |
| Memory Storage Capacity (Max) | 2 TB (SSD not included)   |
| Compatible Devices            | Laptop, PC, SLR (support external recording), Smartphone, iPad Pro, PS5, Steam Deck |
| Data Transfer Rate            | 10 Gigabits Per Second (USB 3.2 Gen 2)  |
| Manufacturer                  | Sharge Technology (Shenzhen) Co., Ltd.  |
| Product Dimensions            | 1.96 x 1.1 x 0.51 inches (49.8 x 27.9 x 13 mm)                                      |
| Hardware Interface            | USB 3.2 Gen 2   |
| Color                         | Gray  |
| Hardware Platform             | Windows, MacOS, iPad OS, Linux, Android, ChromeOS, Harmony                          |
| Water/Dust Protection         | IP54 Rated  |
| Drop Protection               | 6.6ft (2 meters)  |

## WARRANTY AND SUPPORT


SHARGE products are designed and manufactured to the highest quality standards. For warranty information and customer support, please refer to the documentation included with your purchase or visit the official SHARGE website. For technical assistance or inquiries, you may contact SHARGE customer support through their official channels. Please have your product model number (SD 001) and purchase details ready when contacting support.



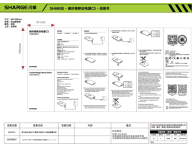
Official SHARGE Store: [SHARGE Official Store on Amazon](#)



© 2023 SHARGE. All rights reserved.  
This manual is for informational purposes only. Specifications are subject to change without notice.

## Related Documents

|   |  |
|---|--|
|  | <p><a href="#">SHARGE Disk Enclosure SD001: User Manual, Specifications, and Safety Guide</a></p> <p>Get detailed information on the SHARGE Disk Enclosure (Model SD001), including installation steps, product specifications, safety guidelines, and warranty policies. Supports M.2 NVMe SSDs via USB-C with 10Gbps speeds.</p> |
|---|--|

|   |   |
|---|---|
|  | <p><a href="#">Disk Pro SD003 User Manual and Specifications</a></p> <p>User manual and technical specifications for the Sharge Disk Pro SD003, a portable storage device with USB-C, HDMI, USB 3.0, and USB 2.0 interfaces.</p>  |
|  | <p><a href="#">SHARGE Hurricane 2 M2 Magnetic Power Bank User Manual - Fast Charging &amp; Wireless Charging Guide</a></p> <p>Comprehensive user manual for the SHARGE Hurricane 2 (ICEMAG 2) M2 magnetic mobile power bank. Learn about its 30W USB-C fast charging, 15W wireless charging, safety features, and operation. Includes specifications, instructions, and compliance information.</p> |
|  | <p><a href="#">SHARGE CarbonMag Power Bank C3 User Manual - Portable Charger Guide</a></p> <p>Comprehensive user manual for the SHARGE CarbonMag Power Bank C3. Learn about product features, specifications, usage instructions, safety precautions, and troubleshooting for this 5000mAh magnetic wireless charger.</p>   |