

## usogood DL502

# Usogood WiFi Trail Camera Instruction Manual

Model: DL502

Brand: Usogood

## PRODUCT OVERVIEW

The Usogood WiFi Trail Camera (Model DL502) is an advanced outdoor camera designed for wildlife scouting, hunting, and security. It captures high-resolution 32MP photos and smooth 2.7K/1520P videos at 30 frames per second, utilizing H.264 compression for efficient storage. Its robust IP66 waterproof design ensures durability in various weather conditions.

Key features include a revolutionary Wi-Fi hotspot connection method that simplifies setup, eliminating the need for manual password entry. The camera boasts 65ft Hyper Night Vision with 850nm infrared LEDs for clear nighttime captures without disturbing animals. Equipped with three sensitive PIR sensors, it offers a quick 0.2-second trigger speed and a 120-degree motion detection range, ensuring no moment is missed.

## PACKAGE CONTENTS

Upon unboxing your Usogood DL502 Trail Camera, please verify that all components listed below are included:

- Trail Camera (1 unit)
- Instruction Manual (1 unit)
- Mounting Belt (1 unit)
- USB Cable (1 unit)
- Threaded Tripod and Screw Accessories (1 set)

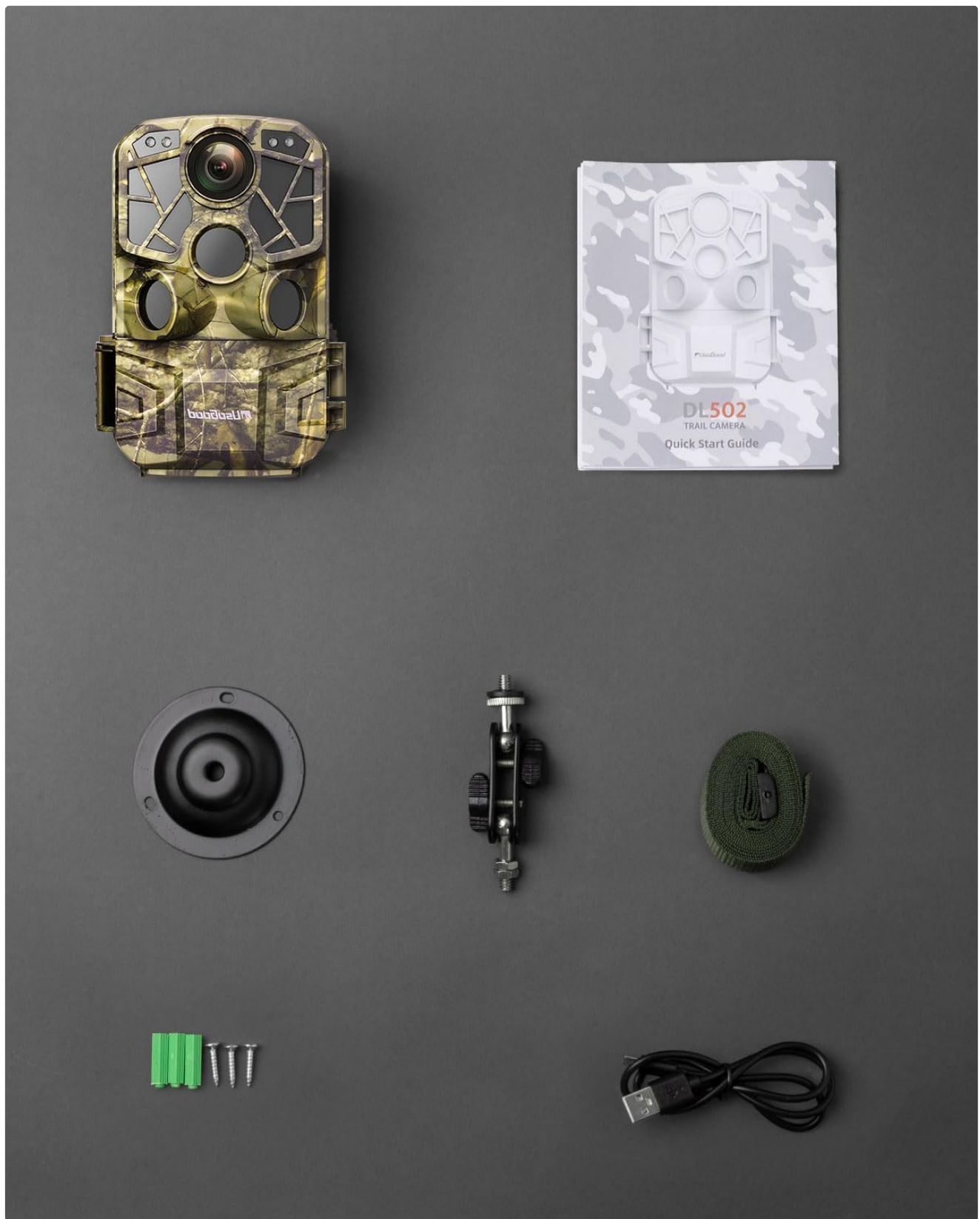


Image: All items included in the Usogood DL502 Trail Camera package.

## SETUP GUIDE

### 1. Battery Installation

The Usogood DL502 Trail Camera requires 8 AA batteries (not included). To install, press the battery compartment switch located at the bottom of the camera to release the battery tray. Insert the 1.5V AA batteries, ensuring correct

polarity. Once all batteries are in place, slide the tray back into the camera until it clicks securely.

## 2. SD Card Installation and Formatting

The camera supports up to a 256GB memory card (not included). Before first use, it is crucial to format the SD card on a computer. After formatting, insert the SD card into the designated slot on the camera. Switch the camera to 'SET' mode to access the settings menu. Navigate to the format option and confirm to format the SD card within the camera. This ensures optimal compatibility and performance.

Video: A comprehensive guide on how to install batteries and the SD card, and how to format the SD card using the Usogood DL502 Trail Camera's interface.

## OPERATING YOUR TRAIL CAMERA

### 1. Powering On and Basic Navigation

To power on the camera, slide the mode switch from 'OFF' to 'ON'. The camera will perform a brief startup sequence. You can navigate through the camera's settings and review captured media directly on the built-in LCD screen using the control buttons. The screen allows you to adjust various parameters such as photo resolution, video resolution, and PIR sensor sensitivity.

### 2. Connecting to the Mobile App (TrialCam Go)

The DL502 features a simplified Wi-Fi hotspot connection for easy remote access via the TrialCam Go app. First, download the 'TrialCam Go' app from your mobile app store. Ensure Bluetooth and Wi-Fi are enabled on your phone. Power on the camera and follow the in-app instructions to scan for and connect to the camera's hotspot. No password is required for the initial connection, thanks to advanced encryption. Once connected, you can adjust camera settings, preview images and videos, and download them directly to your phone.

Video: Demonstrates the process of connecting the Usogood DL502 Trail Camera to the mobile app via Wi-Fi, including initial setup and accessing camera functions.

For optimal app functionality and media management, the app allows you to set camera parameters, preview, and download photos and videos. Remember to disconnect the Wi-Fi connection when not in use to conserve battery life.

# View the wonderful moments as you want



Free App  
(iOS/Android)



Download  
pictures and videos



Adjust  
camera settings



Image: The camera's WiFi app control feature, allowing remote management and media viewing.

Video: A short clip demonstrating the ability to download captured footage, such as a fox, directly through the mobile application.

### 3. Motion Detection and Capture

The camera's motion detection system is highly responsive, triggering within 0.2 seconds of detecting movement within its 65-foot range. The 120-degree wide-angle trigger ensures comprehensive coverage, capturing fast-moving subjects effectively.

# Upgraded wild-angle trigger and 65ft detection distance



Image: Visual representation of the camera's 120-degree detection angle.

# Super trigger speed not to miss exciting moment



## 0.2S Trigger Speed

Image: The camera's rapid 0.2-second trigger speed, ideal for capturing quick movements.

#### 4. Night Vision Capabilities

Equipped with 850nm infrared LEDs, the DL502 provides exceptional 65ft Hyper Night Vision. This technology allows for clear image and video capture in low-light or no-light conditions without emitting a visible flash that could startle wildlife.

Upgraded sensor and 850nm  
LED delivers super night vision



**65ft** *Captured*



-6°C / 21.2 °F

8/30/2023

03:30:05

Image: A raccoon captured clearly at night, demonstrating the camera's hyper night vision.

Video: A short preview video showcasing birds drinking and bathing, captured by the Usogood trail camera, highlighting its ability to record wildlife.

## 5. Image and Video Quality

The camera delivers stunning 32MP photos and 2.7K/1520P videos at 30fps, ensuring vivid and detailed captures of every moment.

# Clear and smooth video experience



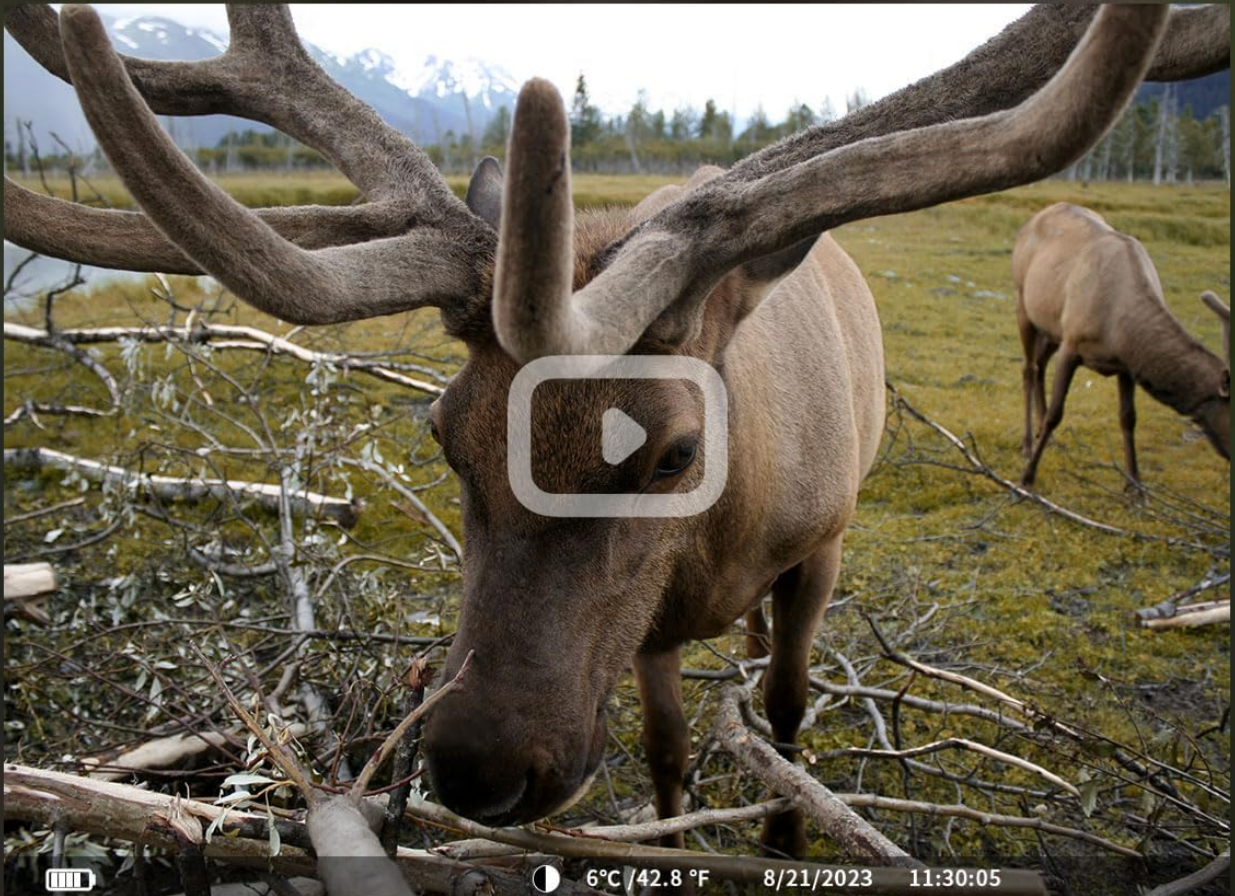
30fps HD Video



Color LCD Screen



Audio recording



# 2.7K *HD video*

Image: A still from a 2.7K HD video, showcasing the camera's video quality.

32MP HD Image resolution captures every vivid moment



Image: A high-resolution 32MP image of a fox, demonstrating the camera's photo capabilities.

TECHNICAL SPECIFICATIONS

Feature	Specification
Model Name	DL502

Effective Still Resolution	32 MP
Video Capture Resolution	2.7K/1520P
Frame Rate	30fps
Connectivity Technology	Supports hotspot WiFi (not SIM)
Night Vision Range	65 Feet
Viewing Angle	120 Degrees
Max Shutter Speed	0.2 seconds
International Protection Rating	IP66
Power Source	Battery Powered (8 AA batteries, not included)
Flash Memory Supported Size Maximum	256 GB
Item Dimensions (L x W x H)	5.2 x 4.02 x 8.07 inches
Item Weight	1.17 pounds

## MAINTENANCE

To ensure the longevity and optimal performance of your Usogood DL502 Trail Camera, regular maintenance is recommended:

- **Cleaning:** Periodically wipe the camera lens and PIR sensors with a soft, dry cloth to remove dust, dirt, or smudges that may affect image quality or detection.
- **Battery Care:** Always use fresh, high-quality AA batteries. If the camera will not be used for an extended period, remove the batteries to prevent leakage and potential damage to the device.
- **Waterproof Seal:** Although the camera is IP66 waterproof, regularly inspect the rubber seal around the battery compartment and other openings for any signs of wear or damage. Ensure the compartment is securely latched after battery installation to maintain its waterproof integrity.
- **SD Card Management:** Regularly back up important footage from your SD card to a computer or external storage. Format the SD card periodically (after backing up) to maintain its performance and prevent data corruption.

## TROUBLESHOOTING

If you encounter issues with your Usogood DL502 Trail Camera, consider the following common troubleshooting steps:

- **Camera Not Powering On:** Ensure batteries are correctly inserted with the right polarity and are fully charged. Check if the mode switch is set to 'ON' or 'SET'.

- **Wi-Fi Connection Issues:** Verify that Bluetooth and Wi-Fi are enabled on your mobile device. Ensure you are within the 65ft (20m) Wi-Fi range and 33ft (10m) Bluetooth range. If prompted for permissions, always allow the app to access your local network. Restarting both the camera and your phone may resolve temporary connection glitches.
- **Poor Image/Video Quality:** Check if the lens is clean and free from obstructions. Ensure the camera is installed at the recommended height (2ft-6ft) and tilted appropriately (45 degrees) to capture subjects within the optimal observation range. Verify that the SD card is formatted correctly and has sufficient free space.
- **Motion Detection Not Triggering:** Adjust the PIR sensor sensitivity settings in the camera menu. Ensure there are no obstructions directly in front of the sensors. Test the PIR function in 'SET' mode to confirm it's working.
- **Rapid Battery Consumption:** Continuous Wi-Fi connection can drain batteries quickly. Disconnect the app when not actively reviewing footage. Consider using high-capacity alkaline or rechargeable AA batteries for extended use.

## WARRANTY AND SUPPORT

Usogood is committed to providing high-quality outdoor electronic products. This product is covered by a 1-year warranty. Usogood also offers a 30-day money-back guarantee without excuse. For any questions, technical support, or warranty claims, please refer to the official website or contact customer support.

You can find additional information and a detailed user manual in PDF format [here](#).

For direct support, please visit the [Usogood Store on Amazon](#).