

[Manuals.plus](#) /

> [QUICO](#) /

> Quico Hair Blow Dryer User Manual

QUICO B0CJ93MWHG

Quico Hair Blow Dryer User Manual

Model: B0CJ93MWHG

Brand: QUICO

1. INTRODUCTION

Thank you for choosing the Quico Hair Blow Dryer. This professional-grade hair dryer is designed for efficient and effective hair drying and styling, featuring a high-speed BLDC motor, advanced ionic technology, and multiple heat and speed settings. Please read this manual thoroughly before use to ensure safe and optimal operation.



Figure 1: Quico Hair Blow Dryer with included attachments.

2. SAFETY INFORMATION

To reduce the risk of electric shock, burns, fire, or injury to persons:

- Always unplug the appliance immediately after using.
- Do not use while bathing.
- Do not place or store appliance where it can fall or be pulled into a tub or sink.
- Do not place in or drop into water or other liquid.
- Do not reach for an appliance that has fallen into water. Unplug immediately.
- Close supervision is necessary when this appliance is used by, on, or near children or individuals with certain disabilities.

- Use this appliance only for its intended use as described in this manual. Do not use attachments not recommended by the manufacturer.
- Never operate this appliance if it has a damaged cord or plug, if it is not working properly, or if it has been dropped, damaged, or dropped into water.
- Keep the cord away from heated surfaces. Do not wrap the cord around the appliance.
- Never block the air openings of the appliance or place it on a soft surface, such as a bed or couch, where the air openings may be blocked. Keep the air openings free of lint, hair, and the like.
- Never use while sleeping.
- Never drop or insert any object into any opening.
- Do not use outdoors or operate where aerosol (spray) products are being used or where oxygen is being administered.
- Do not use an extension cord with this appliance.
- Do not direct hot air towards eyes or other heat-sensitive areas.
- Attachments may be hot during use. Allow them to cool before handling.
- Do not place appliance on any surface while operating.
- While the air inlet filter is easy to remove and washable, please clean the filter regularly to maintain optimal performance.

3. PACKAGE CONTENTS

The Quico Hair Blow Dryer package includes:

- 1 x Quico Hair Blow Dryer (White)
- 1 x Diffuser Nozzle
- 2 x Concentrator Nozzles (Smooth Nozzle, Styling Nozzle)
- 1 x Instruction Manual

360° ROTATABLE MAGNETIC CONCENTRATION NOZZLE

Smooth Nozzle

Steady airflow to smooth hair, reduce frizz



Diffuser

Dispersed airflow and enhance hair gloss



Styling Nozzle

Concentrated airflow for precise styling



Figure 2: The three magnetic nozzles included with the Quico Hair Blow Dryer.

4. SETUP

Before first use, ensure all packaging materials are removed. The Quico Hair Blow Dryer features magnetic attachments for easy setup.

- 1. Choose the Right Nozzle:** Select the appropriate nozzle for your desired styling.
 - **Smooth Nozzle:** For steady airflow to smooth hair and reduce frizz.
 - **Diffuser Nozzle:** For dispersed airflow to enhance hair gloss and define curls.
 - **Styling Nozzle:** For concentrated airflow for precise styling.
- 2. Attach the Nozzle:** Align the chosen magnetic nozzle with the front of the hair dryer. The magnets will securely snap it into place. The nozzles are 360° rotatable for flexible styling.
- 3. Plug In:** Plug the hair dryer into a standard 120V AC electrical outlet.



Figure 3: Magnetic nozzle attachment for easy and secure fitting.

5. OPERATING INSTRUCTIONS

The Quico Hair Blow Dryer offers intuitive controls for customized drying and styling.

1. **Power On/Off:** Press the power button located on the handle to turn the dryer on or off.
2. **Adjust Speed:** Use the speed control button to cycle through 3 different wind speeds:
 - Low (Gentle Drying)
 - Medium (Regular Drying)
 - High (Fast Drying)
3. **Adjust Heat:** Use the heat control button to cycle through 3 different temperature settings:
 - Cool (Room Temp Diffusing)
 - Warm (Warm Fast Drying)
 - Hot (Hot Ultra-Fast Drying)
4. **Cold Shot Function:** Press and hold the cold shot button (often integrated with the heat control) for a burst of cool air to set your style.
5. **Drying Hair:** Direct the airflow at your hair, moving the dryer continuously to prevent heat concentration in one area. For best results, section your hair and dry it systematically.

3 TEMPERATURE SETTINGS & 3 SPEED SETTINGS



Figure 4: Control panel with indicators for heat and speed settings.

Your browser does not support the video tag.

Video 1: Official product video demonstrating the Quico 1875W High-Speed Powerful Blow Dryer with 110000 RPM motor, showcasing its features and quiet operation.

6. MAINTENANCE

Regular maintenance ensures the longevity and optimal performance of your Quico Hair Blow Dryer.

- Cleaning the Air Inlet Filter:** The air inlet filter is designed to be easily removable and washable.
 - To remove, gently twist or slide the filter cover off the back of the dryer.
 - Remove the mesh filter cup.
 - Rinse the filter under running water to remove any accumulated lint, dust, or hair.
 - Allow the filter to air dry completely before reinserting it into the dryer.

- Reattach the filter cover securely.

Important: Clean the filter regularly to prevent overheating and maintain strong airflow.

2. **Auto-Cleaning Function:** The dryer features a one-click auto-cleaning function for internal dust removal. Refer to the specific button on your device for this feature.
3. **Exterior Cleaning:** Wipe the exterior of the dryer with a soft, damp cloth. Do not use abrasive cleaners or solvents.
4. **Storage:** When not in use, store the hair dryer in a cool, dry place, away from moisture and direct sunlight. Do not wrap the cord tightly around the dryer.



Figure 5: The removable and washable air inlet filter for easy cleaning.

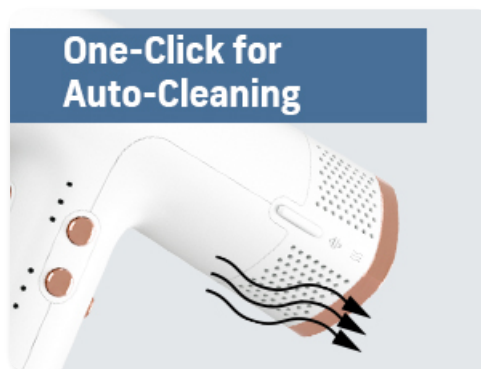


Figure 6: The auto-cleaning feature helps maintain internal cleanliness.

7. TROUBLESHOOTING

Problem	Possible Cause	Solution
Dryer does not turn on.	No power supply; damaged cord/plug.	Ensure the dryer is properly plugged into a working outlet. Check for any visible damage to the cord or plug. Do not use if damaged.
Weak airflow or overheating.	Blocked air inlet filter; internal dust accumulation.	Clean the air inlet filter as described in the Maintenance section. Use the auto-cleaning function.
Hair is frizzy after drying.	Ionic function not active or improper drying technique.	Ensure the dryer's ionic function is active (if indicated by a light). Use a lower heat setting and direct airflow downwards along the hair shaft.

Problem	Possible Cause	Solution
Nozzles do not stay attached.	Improper attachment; debris on magnetic connection.	Ensure the nozzle is correctly aligned and fully seated onto the magnetic connection. Clean any debris from the magnetic surfaces.

If the problem persists after trying these solutions, please contact customer support.

8. SPECIFICATIONS

- **Model:** B0CJ93MWHG
- **Brand:** QUICO
- **Motor:** 110,000 RPM High-Speed BLDC Motor
- **Wattage:** 1875 watts
- **Voltage:** 120 volts
- **Airflow:** 23m/s
- **Negative Ions:** 200 Million
- **Noise Level:** As low as 58dB
- **Weight:** 12.77 ounces (approx. 362g)
- **Dimensions:** 14.17 x 10.24 x 3.35 inches
- **Material:** Metal
- **Color:** White
- **Power Source:** Corded Electric

9. WARRANTY AND SUPPORT

Quico offers a generous 60-month hassle-free service for your peace of mind. For any questions, concerns, or warranty claims, please contact Quico customer service through the retailer where you purchased the product or visit the official Quico website for support information.

Legal Disclaimer: Statements regarding dietary supplements have not been evaluated by the FDA and are not intended to diagnose, treat, cure, or prevent any disease or health condition.