

Phomemo M832

Phomemo M832 Wireless Portable Thermal Printer User Manual

Model: M832 | Brand: Phomemo

INTRODUCTION

The Phomemo M832 is an inkless wireless portable thermal printer designed for convenience and efficiency. It supports various paper sizes and types, making it suitable for a wide range of printing needs, from documents and photos to labels and study notes. This manual provides comprehensive instructions for setting up, operating, maintaining, and troubleshooting your M832 printer.



Image: The Phomemo M832 printer in use, demonstrating its ability to print various documents and images, including invoices, skeletal system diagrams, and artistic designs, alongside a roll of thermal paper.

WHAT'S IN THE BOX

Upon unboxing your Phomemo M832 printer, please verify that all the following components are included:

- 1 Phomemo Portable Printer
- 1 Printer User Manual
- 1 Roll A4 Thermal Roll Paper (pre-installed in the printer)
- 1 Storage Bag for The Thermal Receipt Printer
- USB-C Cable (for charging and wired connection)

SETUP GUIDE

Initial Paper Loading

The printer comes with a roll of A4 thermal paper pre-installed. Before first use, ensure the protective label is removed and the paper is correctly positioned.

Your browser does not support the video tag.

Video: M832 Quick Start Guide Video. This video demonstrates the initial setup steps, including paper loading and basic operation.

Powering On

Press and hold the power button on the printer until the indicator light illuminates. Ensure the printer is sufficiently charged for optimal performance.

Connecting to Devices

The Phomemo M832 offers both wireless (Bluetooth) and wired (USB) connection options.

Mobile Phone & Tablet Connection (Bluetooth)

1. Download the "Phomemo" App from your device's app store (compatible with Android 7 & iOS 13 and above).
2. Turn on the printer and enable Bluetooth on your phone or tablet.
3. Open the "Phomemo" App, click the 'Printer' icon to search for the M832 portable printer, and connect via Bluetooth within the App.
4. Select the desired paper size and file type within the App to begin printing.

Bluetooth Connection

Bluetooth Connection for iOS & Android Phone and Tablet,
Download “Phomemo” App, Connect Bluetooth on The App



Image: Visual guide for connecting the Phomemo M832 printer to mobile devices via Bluetooth, showing the Phomemo app interface and compatibility with Android and iOS.

Your browser does not support the video tag.

Video: How To Use The Printer with Phone. This video provides a step-by-step demonstration of connecting and printing from a smartphone.

Laptop/PC Connection (USB Cable)

1. Visit the official Phomemo website to download and install the correct M832 driver for your operating system (compatible with Windows 7 & macOS 10 and above).
2. Use the provided USB data cable to connect the printer to your computer.
3. Select and open your document, then choose "M832" from the printer list to initiate printing.



Image: Diagram illustrating the wired USB connection process for the Phomemo M832 printer with a laptop, showing driver download and compatibility with Mac and Windows.

Your browser does not support the video tag.

Video: Phomemo M832 How to Set up on Mac OS. This video guides users through the setup process specifically for Mac operating systems.

OPERATING INSTRUCTIONS

Supported Paper Types and Sizes

The Phomemo M832 is versatile, supporting various thermal paper types and sizes to meet diverse printing needs.

- **Supported Sizes:** 2.08 inches (53mm), 3.14 inches (80mm), 4.33 inches (110mm), A4, and 8.5" x 11" US letter thermal paper.
- **Supported Paper Types:** Roll paper, folded paper, and ordinary thermal paper.

5 Sizes Thermal Paper Support

53mm/2.08 inch, 80mm/3.14 inch, 110mm/4.33 inch,
210mm (A4), 216mm (Letter Size)



Image: The Phomemo M832 printer illustrating its compatibility with five different thermal paper sizes, including 53mm, 80mm, 110mm, A4, and Letter size.

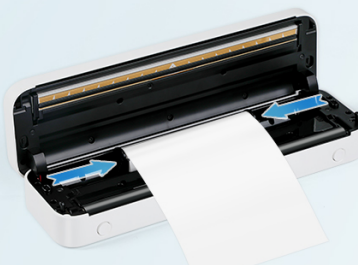
3 Paper Types

More Efficient



Folding Paper

(Automatic paging multiple paper printing)



Inner Roll Paper

(Free space, customized paper length)



Ordinary Thermal Paper

(Portable and convenient)

Image: Visual representation of the three paper types supported by the Phomemo M832: folding paper for automatic paging, inner roll paper for customized length, and ordinary thermal paper for portability.

Printing Documents and Images

The M832 printer can handle various content types, including receipts, contracts, photos, pictures, journals, DIY projects, greeting cards, study notes, lists, labels, long banners, and more.



Image: The Phomemo M832 printer displaying examples of printed materials such as articles, pictures, and various templates, highlighting its versatility.

Your browser does not support the video tag.

Video: What can you do with M832 Portable Printer. This video showcases various applications and types of content that can be printed with the M832.

Your browser does not support the video tag.

Video: M832 Portable Printer for Pictures DIY, Photo. This video specifically demonstrates printing photos and images for DIY projects.

MAINTENANCE

Changing Thermal Paper

When the thermal paper roll is depleted or you wish to change paper types, follow these steps:

1. Open the printer cover.
2. Remove the empty paper roll or the current paper type.
3. Insert the new thermal paper roll, ensuring the paper feeds smoothly into the printer mechanism.
4. Close the printer cover securely.

Your browser does not support the video tag.

Video: How to Change Thermal Paper with M832 Portable Printer. This video provides a visual guide on replacing the thermal paper roll.

Cleaning the Printer

To ensure optimal print quality and prolong the life of your printer, regular cleaning is recommended. Use a soft, dry cloth to wipe the exterior. For the thermal print head, gently wipe with an alcohol swab when the printer is off and cooled down.

TROUBLESHOOTING

If you encounter issues with your Phomemo M832 printer, please refer to the following common problems and their solutions:

Problem	Possible Cause	Solution
Printer does not turn on.	Low battery or power issue.	Charge the printer using the provided USB-C cable. Ensure the charging indicator light is on.
Nothing prints on the paper / Blank prints.	Thermal paper loaded incorrectly (upside down) or wrong paper type.	Ensure the thermal paper is loaded with the printable side facing the print head. Only use thermal paper.
Cannot connect via Bluetooth.	Bluetooth not enabled, app not open, or printer not discoverable.	Ensure Bluetooth is enabled on your device and the printer. Open the Phomemo app and connect from within the app. Restart both devices if necessary.
Cannot print from Laptop/PC.	Driver not installed or incorrect, USB cable issue.	Verify that the correct driver is installed from the official Phomemo website. Check USB cable connection. Try a different USB port.
Print quality is poor/blurry.	Low resolution, dirty print head, or old/damaged thermal paper.	Ensure your image/document resolution is adequate. Clean the thermal print head. Try a new roll of thermal paper.

PRODUCT SPECIFICATIONS

Feature	Detail
---------	--------

Feature	Detail
Brand	Phomemo
Model Name	M832
Printing Technology	Thermal
Connectivity Technology	Bluetooth, USB
Printer Output	Monochrome
Resolution	300 x 300 dpi
Max Print Speed (Monochrome)	3 ppm
Supported Media Sizes	8.5" x 11" (US Letter), A4, 4.33", 3.14", 2.08" Inches
Compatible Devices	Smartphones (Android 7+, iOS 13+), PC (Windows 7+), Laptops (macOS 10+)
Battery Capacity	2600mAh (built-in rechargeable)
Item Weight	3.2 ounces (0.2 lbs)
Product Dimensions	12.2 x 4.17 x 3.11 inches

WARRANTY AND SUPPORT

Warranty Information

The Phomemo M832 Portable Printer comes with a limited warranty. Please refer to the warranty card included in your product packaging for specific terms and conditions. For any warranty claims or service requests, retain your proof of purchase.

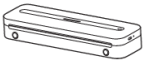
Customer Support

For further assistance, technical support, or inquiries, please visit the official Phomemo website or contact their customer service team. You can also refer to the comprehensive [User Manual \(PDF\)](#) for detailed information.

Dear Customer,
Thank you for purchasing the Phomemo M832 A4 Portable Thermal Printer.
This User Guide will help you get the most out of your printer. Please read it carefully before using the printer.
This manual is for the Phomemo M832 A4 Portable Thermal Printer. It contains information about the printer's features, functions, and how to use it. It also includes troubleshooting tips and safety information.
Please read this manual carefully before using the printer. It contains important information about the printer's features, functions, and how to use it. It also includes troubleshooting tips and safety information.
Thank you for purchasing the Phomemo M832 A4 Portable Thermal Printer. We hope you enjoy using it.
Phomemo Team

[Phomemo M832 A4 Portable Thermal Printer User Guide and Tips](#)

Information and usage tips for the Phomemo M832 A4 Portable Thermal Printer by Zoolion, including setup instructions and troubleshooting advice.



M832 Portable Printer
User Guide

Before using this product, please read this manual carefully.

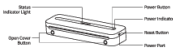
English

01. Package Contents



*Attention: All pictures in this instruction manual are for illustration purposes only. The actual product may vary from product illustrations.

02. Printer Components



Button Function	Function
Power Button	Press and hold the button for 3 seconds to turn on the printer.
Paper Button	Press and hold the button for 3 seconds to turn off the printer.

Indicator Light	Meaning
Power Light	On: The printer is powered on. Off: The printer is powered off.
Paper Light	On: The printer is printing. Off: The printer is not printing.

03. Precautions

- Do not use the printer in a wet or damp environment.
- Do not use the printer in a high-temperature environment.
- Do not use the printer in a high-humidity environment.
- Do not use the printer in a high-voltage environment.
- Do not use the printer in a high-magnetic field environment.
- Do not use the printer in a high-frequency electromagnetic field environment.
- Do not use the printer in a high-vibration environment.
- Do not use the printer in a high-noise environment.
- Do not use the printer in a high-pollution environment.
- Do not use the printer in a high-risk environment.

Battery usage instructions
The printer is powered by a built-in battery. The battery life is approximately 10 hours. The battery life may vary depending on the usage. Please refer to the battery usage instructions for more details.

04. How to Use

- 1. Download the App**
Please search for "Phomemo" on your phone's App Store and download the App.
Search for Phomemo in the App Store, click to download and install.

- 2. How to download and install driver**
Download the latest driver from the official website. Download the relevant driver according to the your operating system version and follow the instruction to install the driver.



05. Instructions

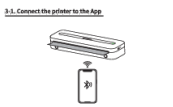
1. Instructions for consumable usage

- Press the top Paper Out Button at the same time the paper is out.
- Take out the remaining included paper roll and unroll it.
- Install the paper roll into the paper compartment and cut the paper out of the Paper Out Button. Please refer to the paper roll installation instructions for more details.

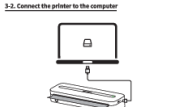
- 2. Instructions for single sheet paper and folded paper usage**
Please refer to the paper roll installation instructions for more details.

- When using single sheet paper or folded paper, please refer to the paper roll installation instructions for more details.
- When using folded paper, please refer to the paper roll installation instructions for more details.

- 3.1. Connect the printer to the App**
Please refer to the paper roll installation instructions for more details.



- 3.2. Connect the printer to the computer**
Please refer to the paper roll installation instructions for more details.



- 3.3. Connect the printer to the computer**
Please refer to the paper roll installation instructions for more details.

- 3.4. Connect the printer to the computer**
Please refer to the paper roll installation instructions for more details.

- 3.5. Connect the printer to the computer**
Please refer to the paper roll installation instructions for more details.

[Phomemo M832 Portable Thermal Printer User Guide](#)

User guide for the Phomemo M832 portable thermal printer, covering package contents, printer components, precautions, app installation, printing instructions, paper types, warranty, and FCC/IC compliance.

[illegible]

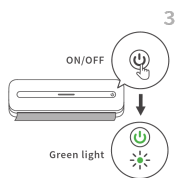
Phomemo M832 Printer Quick Start Guide

A concise guide to setting up and using the Phomemo M832 printer with both computer and smartphone connections, including driver installation, paper loading, and Bluetooth pairing.

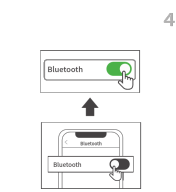
Phomemo M02S Printer: App Download, Connection, and Sticker Paper Replacement Guide

A comprehensive guide for the Phomemo M02S printer, covering app download, Bluetooth connection methods, and step-by-step instructions for replacing sticker paper.

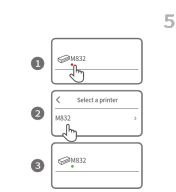
English Follow the steps to load the paper roll properly.
日本語 手順に従って紙ロールを正しくセットしてください。
Deutsch Folgen Sie den Schritten, um die Papierrolle ordnungsgemäß zu laden.



English Press and hold for 3s to turn on the M832 printer.
日本語 3秒を長押しすると、M832起動できる。
Deutsch Halten Sie 3 Sekunden lang gedrückt, um den M832-Drucker einschalten.



English Turn on Bluetooth from phone settings.
日本語 スマートフォンの設定からBluetoothをオンにする。
Deutsch Aktivieren Sie Bluetooth über die Telefoneneinstellungen.



English Connect the printer via Bluetooth in the phomemo App.
日本語 phomemoアプリでBluetoothを利用してM832と接続する。
Deutsch Verbinden Sie den Drucker über Bluetooth in der Phomemo App.

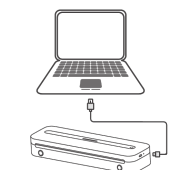


English Select the file in the Phomemo App to print.
日本語 Phomemoアプリでファイルを選択して印刷する。
Deutsch Wählen Sie die zu druckende Datei in der Phomemo App aus.

FCC Warning
This device complies with part 15 of the FCC Rules. Operation is subject to the following two conditions: (1) This device may not cause harmful interference, and (2) this device must accept any interference received, including interference that may cause undesired operation.
Any change or modification not expressly approved by the party responsible for compliance could void the user's authority to operate the equipment.
This equipment has been tested and found to comply with the limits for a Class B digital device, pursuant to part 15 of the FCC Rules. These limits are designed to provide reasonable protection against harmful interference in a residential environment. This equipment generates and can radiate radio frequency energy and, if not installed and used in accordance with the instructions, may cause harmful interference to radio communications. However, there is no guarantee that interference will not occur in a particular installation. If this equipment does cause harmful interference to radio or television reception, which can be determined by turning the equipment off and on, the user is encouraged to try to correct the interference by one or more of the following measures:
- Reorient or relocate the receiving antenna.
- Increase the separation between the equipment and receiver.
- Connect the equipment to an outlet on a circuit different from that to which the receiver is connected.
- Consult the dealer or an experienced radio/TV technician for help.
The device has been evaluated to meet general RF exposure requirements. The device can be used in a general exposure condition without restrictions.

IC Warning
IC Notice
Radio Standards Specification RSS Code, Issue 5 (English)
This device complies with the Canadian Interference-causing Equipment (ICE) that comply with the radio, television and communication (RTE) standards of the Canadian government.
This device complies with the following conditions:
- The device must not cause interference.
- This device must accept any interference, including interference that may cause undesired operation of the device.
The device has been evaluated to meet general RF exposure requirements. The device can be used in a general exposure condition without restrictions.
Avertissement
Consignes relatives aux émissions radio / avertissement relatif au respect des normes canadiennes d'émissions radio.
Ce dispositif est conforme aux normes canadiennes d'émissions radio (CET) qui sont conformes aux normes de la réglementation canadienne.
Ce dispositif est conforme aux conditions suivantes:
- Le dispositif ne doit pas causer d'interférences.
- Ce dispositif doit accepter toute interférence, y compris celle qui peut causer un fonctionnement indésirable du dispositif.
Le dispositif a été évalué pour répondre aux exigences générales d'exposition aux RF. Le dispositif peut être utilisé dans des conditions d'exposition générales sans restriction.
Consultez le QR code pour en savoir plus.
QRコードをスキャンして詳細を確認してください。
Consultez le site Web de l'IC Code, pour en savoir plus sur les exigences relatives aux émissions radio.

Computer Printing with Data Cable
データケーブルを使用したコンピュータ印刷
Computerdruck mit Datenkabel



Phomemo M832 Quick Start Guide: Smartphone and Computer Printing

A concise guide to setting up and using the Phomemo M832 printer for both smartphone and computer printing. Learn how to connect via Bluetooth, load paper, install drivers, and print various file types.



English Open the link: MB32.phonemo.com
日本語 リンクを開きます: MB32.phonemo.com
Deutsch Öffnen Sie den Link: MB32.phonemo.com

2



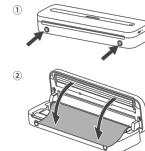
English Download the corresponding drive for your computer system.
日本語 コンピュータシステム向けのカイブをダウンロードします。
Deutsch Laden Sie das entsprechende Laufwerk für ihr Computersystem herunter.

3



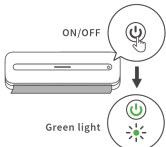
English Follow the above instructions to install the driver.
日本語 上記の手順でドライバーをインストールしてください。
Deutsch Folgen Sie den obigen Anweisungen, um den Treiber zu installieren.

4



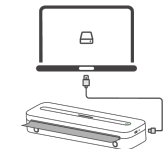
English Follow the steps to load the paper roll properly.
日本語 手順に従って紙ロールを正しくセットしてください。
Deutsch Folgen Sie den Schritten, um die Papierrolle ordnungsgemäß zu laden.

5



English Press and hold for 3s to turn on the MB32 printer.
日本語 3秒も長押しすると、MB32印刷機でる。
Deutsch Halten Sie 3 Sekunden lang gedrückt, um den MB32 Drucker einzuschalten.

6



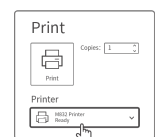
English Connect the printer to your computer with a Type-C data cable.
日本語 Type-Cデータケーブルを使用してプリンターをコンピュータに接続します。
Deutsch Schließen Sie den Drucker mit einem Type-C-Kabel an Ihren Computer an.

7



English Right click the file and click the print button.
日本語 ファイルを右クリックして、印刷ボタンをクリックします。
Deutsch Klicken Sie mit der rechten Maustaste auf die Datei und klicken Sie auf die Schaltfläche „Drucken“.

8



English Select MB32 on your computer and start printing.
日本語 コンピューターでMB32を選択し、印刷を開始します。
Deutsch Wählen Sie MB32 auf Ihrem Computer und starten Sie den Druckvorgang.

1. calculate a high accuracy score for the sentence
2. calculate the accuracy
3. reduce the error count
4. calculate the number of error weights
5. from these points, place a score to support each and provide the following defined value

to avoid a compressed print run, we kept the picture letters sufficiently changed around the history line. Furthermore, 80% of us continued buying after a loss prior to printing.



A comprehensive guide detailing steps to enhance print quality and resolve blank printout issues for Phomemo thermal printers, covering battery management, print density adjustments, print head cleaning, image resolution, and correct paper handling.