

Smuxee SM-WC002

Smuxee Black Wall Cabinet (Model SM-WC002) Instruction Manual

Brand: Smuxee | Model: SM-WC002

1. INTRODUCTION

This manual provides detailed instructions for the assembly, installation, operation, and maintenance of your Smuxee Black Wall Cabinet, Model SM-WC002. Please read all instructions carefully before beginning assembly and retain this manual for future reference.

2. SAFETY INFORMATION

WARNING: Failure to follow these safety instructions could result in injury or damage to the product.

- Always ensure the cabinet is securely mounted to a sturdy wall structure. Use appropriate hardware for your wall type (e.g., wood studs, drywall anchors).
- Be cautious when adjusting the shelves to avoid pinch points.
- Do not overload the shelves. Refer to the specifications for weight limits.
- Keep small parts away from children during assembly.
- Always follow the manufacturer's instructions for safe installation and use.

3. PACKAGE CONTENTS

Before assembly, verify that all parts listed below are present and undamaged. If any parts are missing or damaged, please contact customer support.

- Cabinet Panels (Top, Bottom, Sides, Back, Doors)
- Adjustable Shelf(es)
- Hardware Pack (Screws, Dowels, Hinges, Knobs, Magnetic Catches, Wall Anchors)
- Instruction Manual

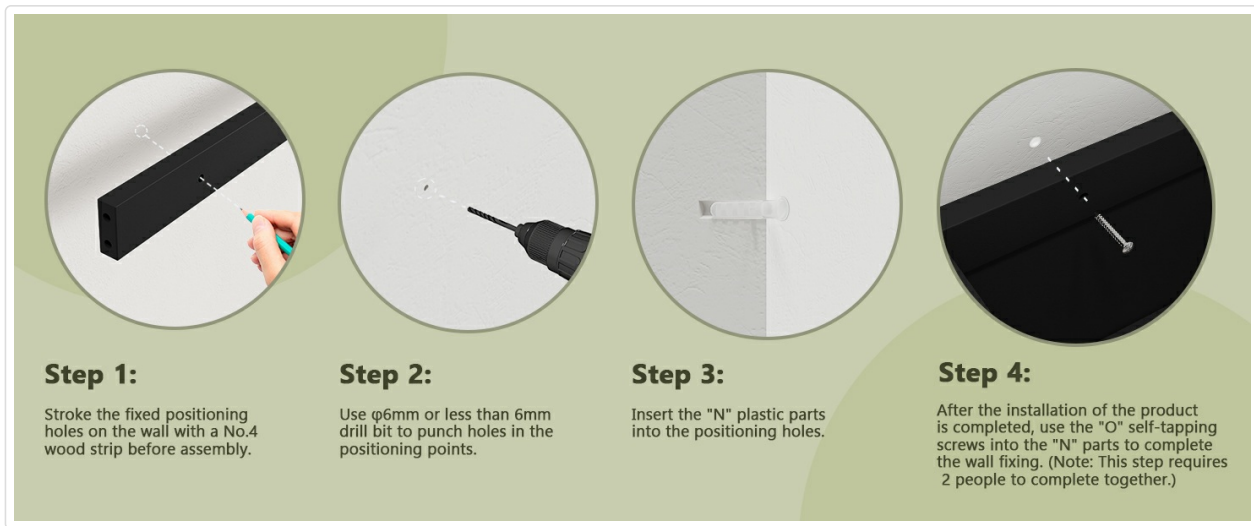


Figure 3.1: Visual guide for installation steps.

4. ASSEMBLY INSTRUCTIONS

Follow these steps to assemble your Smuxee Black Wall Cabinet. A screwdriver is required for assembly.

1. **Attach Side Panels:** Connect the side panels to the bottom panel using the provided dowels and screws. Ensure the pre-drilled holes for the adjustable shelves are facing inward.
2. **Install Back Panel:** Slide the back panel into the grooves of the assembled frame and secure it with small nails or screws.
3. **Attach Top Panel:** Secure the top panel to the side panels using dowels and screws.
4. **Install Hinges:** Attach the hinges to the cabinet doors and then to the cabinet frame. Ensure the doors align properly.
5. **Attach Knobs:** Secure the decorative knobs to the front of the cabinet doors.
6. **Install Magnetic Catches:** Place the magnetic catches on the inside top of the cabinet frame, aligning them with the metal plates on the doors.
7. **Insert Adjustable Shelf:** Place the shelf pins into the desired height holes on the side panels, then rest the adjustable shelf on top of the pins.



Figure 4.1: Cabinet appearance and internal structure.

Adjustable Shelf

It can be adjusted to 5 different heights, which can be adjusted according to the items placed, simple and convenient.

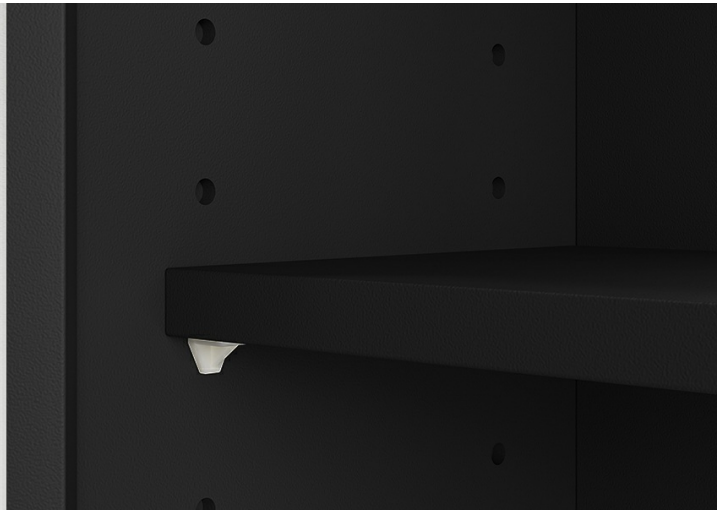


Figure 4.2: Adjustable shelf mechanism.

Firm Suction Device

Holds closed doors well when they are closed.



Figure 4.3: Magnetic door catch detail.

Premium Connection Hinges

High-quality hinge connection device makes the door open and close more easily and safely.

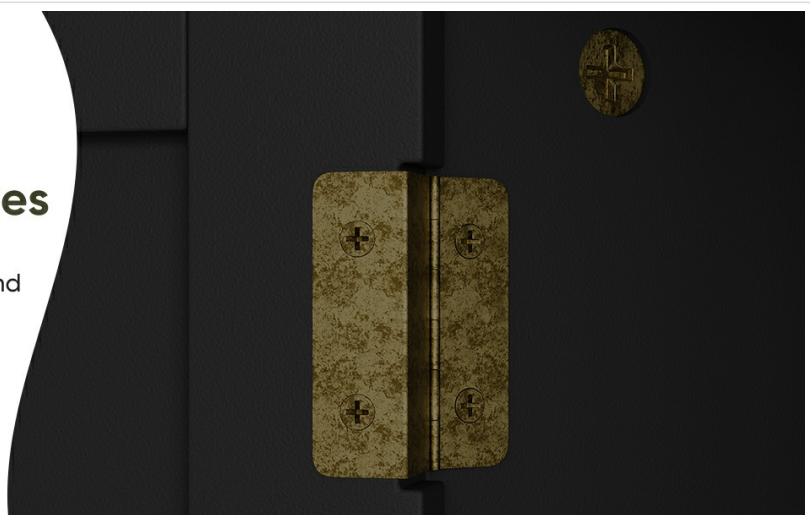


Figure 4.4: Premium connection hinges.

5. INSTALLATION

The Smuxee Black Wall Cabinet is designed for wall mounting. It is recommended that two people perform the installation for safety and ease.

1. **Mark Positioning:** Hold the cabinet against the wall at the desired height and use a pencil to mark the fixed

positioning holes on the wall.

2. **Drill Holes:** Use a $\varnothing 6$ mm or less than 6mm drill bit to punch holes at the marked positioning points.
3. **Insert Wall Anchors:** Insert the plastic wall anchors into the drilled holes.
4. **Secure Cabinet:** Align the cabinet with the wall anchors and use the provided self-tapping screws to fix the cabinet to the wall. Ensure it is level and secure.



Figure 5.1: Wall mounting steps.

Your browser does not support the video tag. Please update your browser or try a different one.

Video 5.1: Official product video demonstrating the Smuxee Black Bathroom Cabinet in use, highlighting its features and appearance.

6. OPERATING INSTRUCTIONS

Your Smuxee Black Wall Cabinet is designed for versatile storage in various rooms.

- **Adjustable Shelves:** The interior shelf can be adjusted to 5 different heights. To adjust, remove the shelf, reposition the shelf pins to the desired height, and then place the shelf back on the pins. This allows customization for items of different sizes.
- **Magnetic Doors:** The two cabinet doors are equipped with magnetic catches to ensure they remain securely closed when not in use.
- **Open Shelf:** The bottom open shelf provides easy access storage or a display area for decorative items.



Figure 6.1: Cabinet in a bathroom setting.

KEEP THE BATHROOM CLEAN AND TIDY



Figure 6.2: Cabinet above a bathroom sink.



Figure 6.3: Cabinet in a living room setting.



Figure 6.4: Cabinet in a kitchen setting.



Figure 6.5: Versatile application scenarios.

7. MAINTENANCE

To ensure the longevity and appearance of your Smuxee Black Wall Cabinet, follow these maintenance

guidelines:

- **Cleaning:** Wipe with a damp cloth. Avoid harsh chemicals or abrasive cleaners that may damage the finish.
- **Water Exposure:** The cabinet is made of high-quality MDF with a spray-painted finish, making it resistant to erosion and suitable for bathroom environments. However, prolonged exposure to excessive moisture should be avoided. Promptly wipe away any spills.
- **Hardware:** Periodically check all screws and fasteners to ensure they are tight. Tighten if necessary.

8. TROUBLESHOOTING

If you encounter any issues with your cabinet, refer to the following common solutions:

- **Doors not closing properly:** Check if the magnetic catches are aligned with the door plates. Adjust the hinges if the doors are uneven.
- **Cabinet feels wobbly:** Ensure all wall mounting screws are securely fastened into a sturdy wall structure. If mounted into drywall, verify that the anchors are correctly installed and holding firmly.
- **Shelf not stable:** Confirm that the shelf pins are fully inserted into the holes and that the shelf is resting evenly on all pins.

9. SPECIFICATIONS

Feature	Detail
Brand	Smuxee
Model Number	SM-WC002
Color	Black
Material	Engineered Wood (MDF)
Product Dimensions (D x W x H)	7.8" x 21.5" x 23.6"
Item Weight	7.78 Kilograms
Number of Doors	2
Adjustable Shelves	1 (with 5 height settings)
Installation Type	Wall Mount
Required Assembly	Yes

5 Adjustable Heights



- ✓ 5 adjustable heights can be selected
- ✓ which can be adjusted according to the items placed
- ✓ simple and convenient

Figure 9.1: Product dimensions.

10. WARRANTY AND SUPPORT

Smuxee is committed to providing high-quality products. For any questions, missing parts, or concerns regarding your Smuxee Black Wall Cabinet, please contact our customer support team. While specific warranty details are not provided in this manual, please refer to your purchase documentation or the retailer's website for warranty information.

For further assistance, visit the official Smuxee Store: [Smuxee Store on Amazon](#)