

Cisco C1300-24T-4G

Cisco Catalyst 1300-24T-4G Managed Switch User Manual

Model: C1300-24T-4G

1. INTRODUCTION

The Cisco Catalyst 1300-24T-4G switch is a fully managed network switch designed to provide reliable and secure connectivity for small business networks. This manual provides essential information for setting up, operating, and maintaining your switch, ensuring optimal performance and network security.

2. PRODUCT OVERVIEW

The Cisco Catalyst 1300-24T-4G switch offers 24 Gigabit Ethernet ports and 4x 1GE SFP uplinks, providing robust connectivity for various network devices. It features full Layer 2/3 capabilities, an intuitive web dashboard, and advanced networking features to support your business needs.

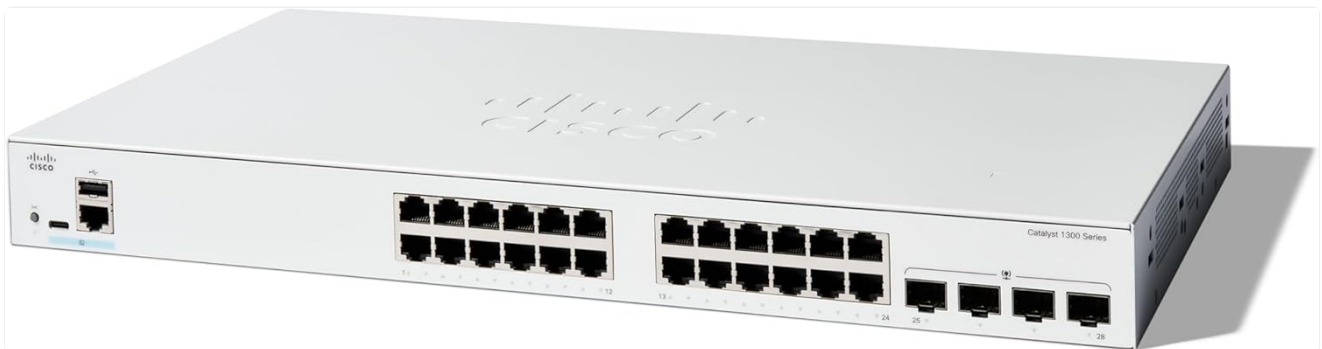


Figure 2.1: Front view of the Cisco Catalyst 1300-24T-4G Managed Switch.

3. KEY FEATURES

- **SWITCH PORTS:** 24 ports 10/100/1000 + 4x 1GE SFP for versatile connectivity.
- **SIMPLE MANAGEMENT:** Intuitive Cisco Business mobile app, local web interface, and Cisco Business Dashboard for easy setup, management, and monitoring.
- **ENHANCED SECURITY:** IP-MAC port binding and IPv6 First Hop Security to protect against network attacks and address spoofing.

- **ENERGY EFFICIENT:** Optimizes power usage, compliant with IEEE 802.3az Energy Efficient Ethernet, with fanless operation in select models.
- **SMALL BUSINESS READY:** No subscription or licenses required, offering a limited lifetime hardware warranty with complimentary 1-year technical support.

4. WHAT'S IN THE BOX

Upon unboxing your Cisco Catalyst 1300-24T-4G Managed Switch, verify that all the following components are included:

- Cisco Catalyst 1300-24T-4G Managed Switch unit
- Power cord or adapter
- USB Type C cable
- Mounting hardware



Figure 4.1: Rear view of the switch with various ports.

5. SETUP GUIDE

Follow these steps to set up your Cisco Catalyst 1300-24T-4G Managed Switch:

1. **Unpack the Switch:** Carefully remove the switch and all accessories from the packaging.
2. **Connect Power:** Connect the power cord or adapter to the switch and then to a power outlet.
3. **Connect to Router:** Use an Ethernet cable to connect one of the switch's GE ports to your network router.
4. **Connect Devices:** Connect your network devices (computers, servers, access points) to the remaining GE ports on the switch.
5. **Initial Configuration:** For initial setup and management, download the Cisco Business mobile app or access the local web interface. Scan the QR code on the device for quick access to documentation and setup guides.

For a visual guide on the unboxing and initial setup, please refer to the official Cisco documentation. This documentation demonstrates the physical setup process, including connecting the power and network cables, and highlights the components included in the box.

6. OPERATING THE SWITCH

The Cisco Catalyst 1300-24T-4G switch is designed for ease of operation and management. Once physically connected, you can manage your network using the following methods:

- **Cisco Business Mobile App:** Download the app to monitor and manage your network from your mobile device. This app allows you to view device status, perform actions, and manage connected clients.
- **Web User Interface (Web UI):** Access the switch's web-based interface via a web browser for comprehensive configuration and monitoring. The Web UI provides advanced tools for network settings, VLAN configuration, security, and more.
- **Cisco Business Dashboard:** For larger deployments or more centralized management, the Cisco Business

Dashboard offers advanced configuration tools and a unified view of your network devices.

These tools allow you to manage wired and wireless devices, monitor network performance, and ensure optimal operation of your business network.

7. MAINTENANCE

Regular maintenance is crucial for ensuring the longevity and optimal performance of your Cisco Catalyst 1300-24T-4G Managed Switch. Consider the following maintenance practices:

- **Firmware Updates:** Periodically check for and install the latest firmware updates from the Cisco support website. Firmware updates often include performance enhancements, security patches, and new features.
- **Physical Inspection:** Regularly inspect the switch for any physical damage, loose cables, or excessive dust accumulation. Ensure proper ventilation to prevent overheating.
- **Configuration Backup:** Regularly back up your switch configuration. This allows for quick restoration of settings in case of an unexpected issue or device replacement.
- **Environmental Conditions:** Ensure the switch operates within recommended temperature and humidity ranges to prevent hardware degradation.

8. TROUBLESHOOTING

If you encounter issues with your Cisco Catalyst 1300-24T-4G Managed Switch, consider the following troubleshooting steps:

- **Check Connections:** Verify that all network cables and the power cord are securely connected to the correct ports. Ensure indicator lights are behaving as expected.
- **Power Cycle:** If the switch is unresponsive, try power cycling it by disconnecting the power, waiting for 10-15 seconds, and then reconnecting it.
- **Verify IP Address:** Ensure the switch has a valid IP address and that your management device can reach it on the network.
- **Consult Documentation:** Refer to the detailed documentation available on the Cisco support portal for specific error codes or advanced troubleshooting procedures.
- **Factory Reset:** As a last resort, if all other troubleshooting fails, you may perform a factory reset. Be aware that this will erase all custom configurations, and the switch will revert to its default settings.

9. SPECIFICATIONS

Attribute	Detail
Switch Type	Managed
Item Model Number	C1300-24T-4G
Number of Ports	24 (10/100/1000 GE) + 4 (1GE SFP uplinks)
Data Transfer Rate	1000 Megabits Per Second
Item Weight	8.67 pounds (3.94 Kilograms)

Attribute	Detail
Product Dimensions	17.5 x 9.45 x 1.73 inches
Case Material	Plastic
Voltage	28 Volts
Country of Origin	China

10. WARRANTY AND SUPPORT

The Cisco Catalyst 1300-24T-4G Managed Switch comes with a **Limited Lifetime Hardware Warranty**. Additionally, it includes **complimentary 1-year technical support** to assist with any operational queries or issues you may encounter.

For detailed warranty information, technical assistance, or to access further documentation, please visit the official Cisco support website. Ensure you have your product model number (C1300-24T-4G) and serial number ready when contacting support.