

- › [Ledge Lounger](#) /
- › [Ledge Lounger Oasis Signature Chaise Bundle Instruction Manual](#)

Ledge Lounger Signature Chaise Bundle

Ledge Lounger Oasis Signature Chaise Bundle Instruction Manual

Model: Signature Chaise Bundle

INTRODUCTION

This manual provides essential information for the setup, operation, and maintenance of your Ledge Lounger Oasis Signature Chaise Bundle. This set includes two Signature Chaises and one Signature In-Pool Side Table, designed for use on shallow sun shelves up to 9 inches deep. Crafted from durable UV20 resin, these pieces are built to withstand various weather conditions and are safe for all pool types, including saltwater and chlorine, vinyl or fiberglass.



Image: Two white Ledge Lounger Signature Chaises and a matching side table positioned on a pool's sun shelf, partially submerged in clear blue water.

SETUP INSTRUCTIONS

The Ledge Lounger Oasis Signature Chaise Bundle requires easy assembly with no drilling needed. To ensure stability and prevent floating, each chaise and the side table must be filled with water. Locate the threaded plug system at the bottom of each unit. Remove the plugs, submerge the units in the pool water, and allow them to fill completely. Rocking the units gently back and forth can help release any trapped air. Once filled, replace the plugs securely. The units are designed to remain stable once filled with water.

SIGNATURE SIDE TABLE



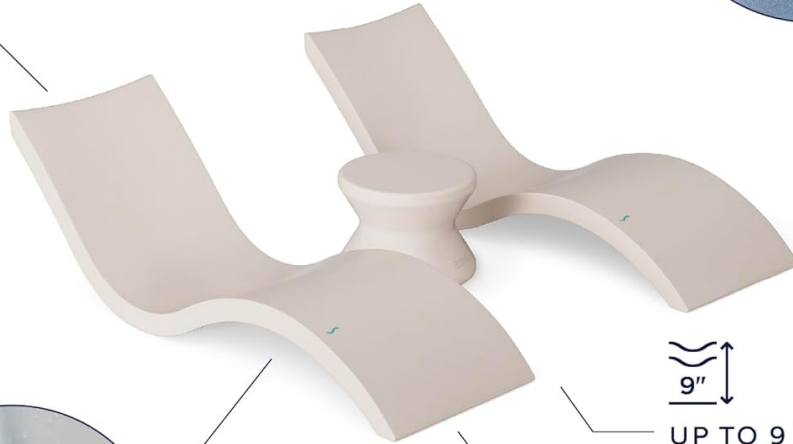
COMPATIBLE WITH
ALL POOL TYPES,
INCLUDING VINYL



UP TO 10 INCHES
WATER DEPTH



IN-POOL, PATIO
AND INDOOR USE



UP TO 9 INCHES
WATER DEPTH



FADE RESISTANT
UV20 RATED RESIN



EASY SET UP
VIA THREADED PLUG
SYSTEM

LEDGE®

Image: A diagram highlighting the easy setup process for Ledge Lounger products, showing a hand interacting with a threaded plug and indicating water depth compatibility.

OPERATING INSTRUCTIONS

Place the Signature Chaises and Side Table on your pool's sun shelf or tanning ledge. These units are specifically designed for water depths up to 9 inches. For deeper ledges, please refer to our Signature Chaise Deep models. The chaises provide a comfortable lounging experience with your upper body and legs partially submerged, while the side table offers a convenient surface for drinks and personal items. The included side table does not feature an umbrella hole; for umbrella compatibility, please consider our Signature Side Table with Umbrella hole, sold separately.

Video: A short video showcasing the Ledge Lounger Signature Chaise in use on a pool's sun shelf, demonstrating its design and functionality.

MAINTENANCE

To maintain the appearance and longevity of your Ledge Lounger products, simply wipe them with a dry cloth. The UV20 resin material is designed for all-weather durability, resisting sun, rain, and wind for over 10 years. Regular cleaning with mild soap and water can help remove any buildup or stains. Avoid using harsh chemicals or abrasive cleaners, as these may damage the finish. The non-metallic construction ensures no

rust or corrosion, making them safe for all pool chemicals.

TROUBLESHOOTING

Stability Issues

If units appear unstable or float, ensure they are completely filled with water. Re-check the threaded plugs to confirm they are securely in place and no air is trapped inside. Rock the unit gently to release any remaining air bubbles.

Discoloration or Stains

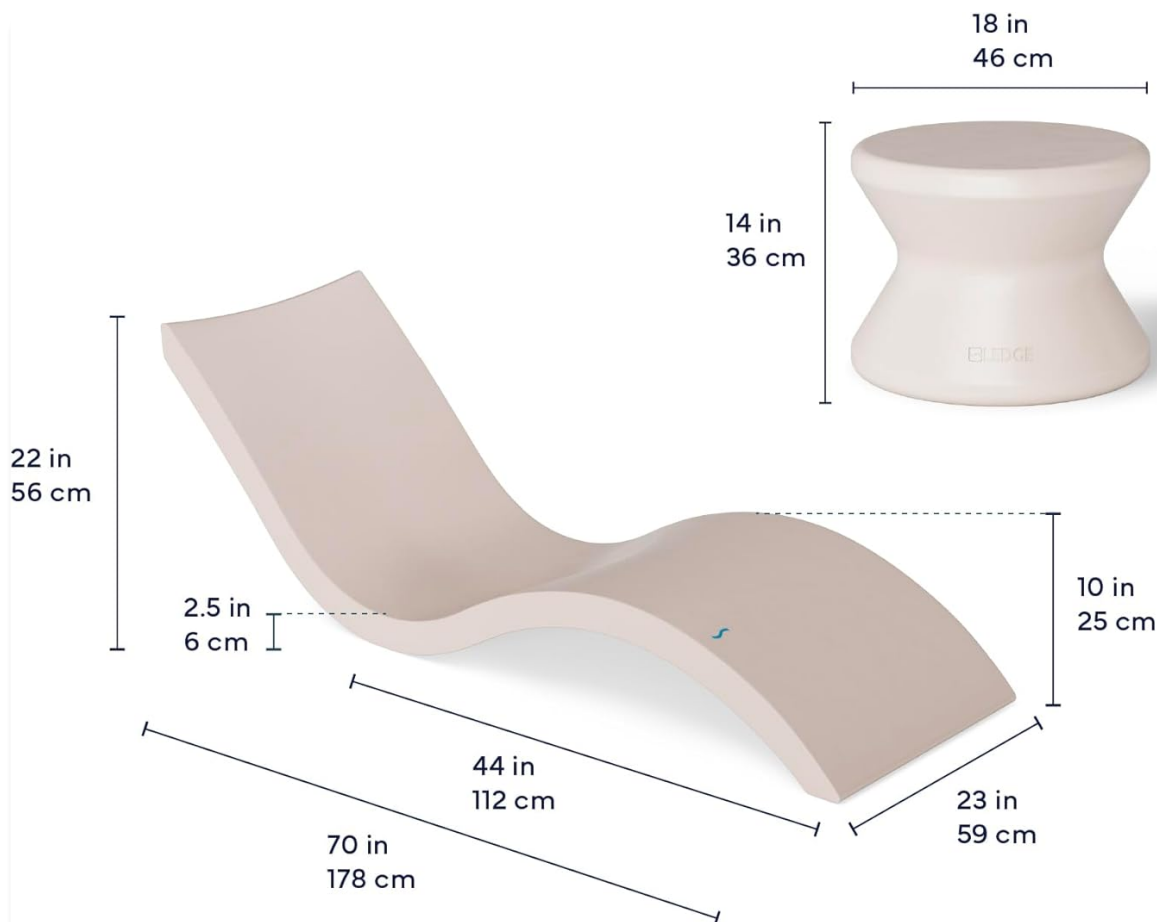
For minor stains or discoloration, clean the surface with a mild soap and water solution, then wipe with a dry cloth. For stubborn marks, a magic eraser can be used carefully. Ensure your pool water chemistry is balanced, as extreme chemical imbalances can affect the product's appearance over time.

General Safety

Do not leave sharp objects or heavy items on the loungers or table when not in use, especially if there is a risk of them falling into the pool or causing damage.

SPECIFICATIONS

Feature	Detail
Material	Resin (UV20 rated)
Item Weight	74 pounds (total for bundle)
Package Dimensions	72 x 23 x 20 inches
Water Depth Compatibility	Up to 9 inches
Assembly Required	No (easy setup via threaded plug system)
Product Care Instructions	Wipe with Dry Cloth
Special Feature	Arm Rest (on chaises)



Signature Chair

Overall Length: 70 in | 178 cm

Overall Width: 23 in | 59 cm

Overall Height: 22 in | 56 cm

Water Depth: Designed for up to
9 in | 23 cm

Signature Standard Side Table

Overall Length: 18 in | 46 cm

Overall Width: 18 in | 46 cm

Overall Height: 14 in | 36 cm

Water Depth: Designed for up to
10 in | 25 cm

Image: Detailed dimensions for the Signature Chaise and Signature Standard Side Table, including overall length, width, height, and water depth compatibility.

WARRANTY AND SUPPORT

Your Ledge Lounger Oasis Signature Chaise Bundle is designed for lasting enjoyment. Optional protection plans are available for purchase, such as a 3-Year Protection Plan. We offer 30-day easy returns for your convenience. For any questions, assistance, or to learn more about our products, please visit the [Ledge Lounger Store](#) or contact our Customer Support team.